

UNHCR Emergency Preparedness and Response





1) Emergency preparedness

2) Emergency response

3) Current emergency operations



EMERGENCY PREPAREDNESS



Emergency Policies and Procedures

Contingency
planning

/country level
preparedness

Emergency
declaration
(HC/AHC)

Release of
resources:

- Human
- Material
- Financial

First delivery
of assistance

**within 72
hours**, for up
to **600,000**
persons



UNHCR's role

- Refugee mandate
- IDP situations



Human Resources

- Staff ready for deployment
- Wide range of profiles



Senior Corporate
Emergency Roster

Emergency
Response Roster

Technical Experts

Standby
Partnership
Rosters

Emergency
Capacity
Management
Service

Training & Capacity-building

Workshop on
Emergency
Management

Senior
Emergency
Leadership
Programme

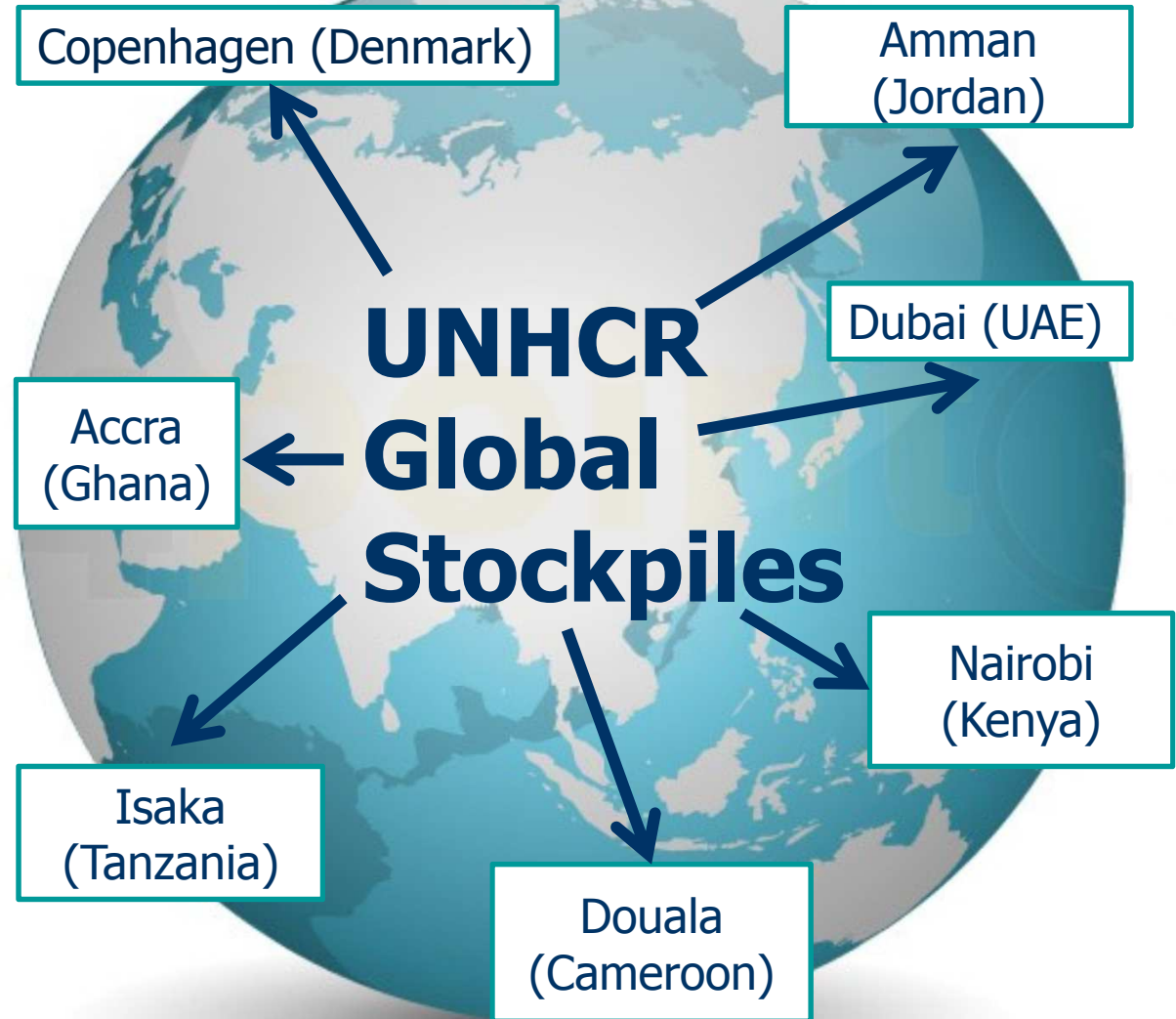
Situational
Emergency
Training

Emergency
Team
Leadership
Programme

eCentre
(Japan,
Tokyo)



Material Support



Global partnerships

- UN agencies



■ NGOs





■ Standby Partners



- Donor and host governments

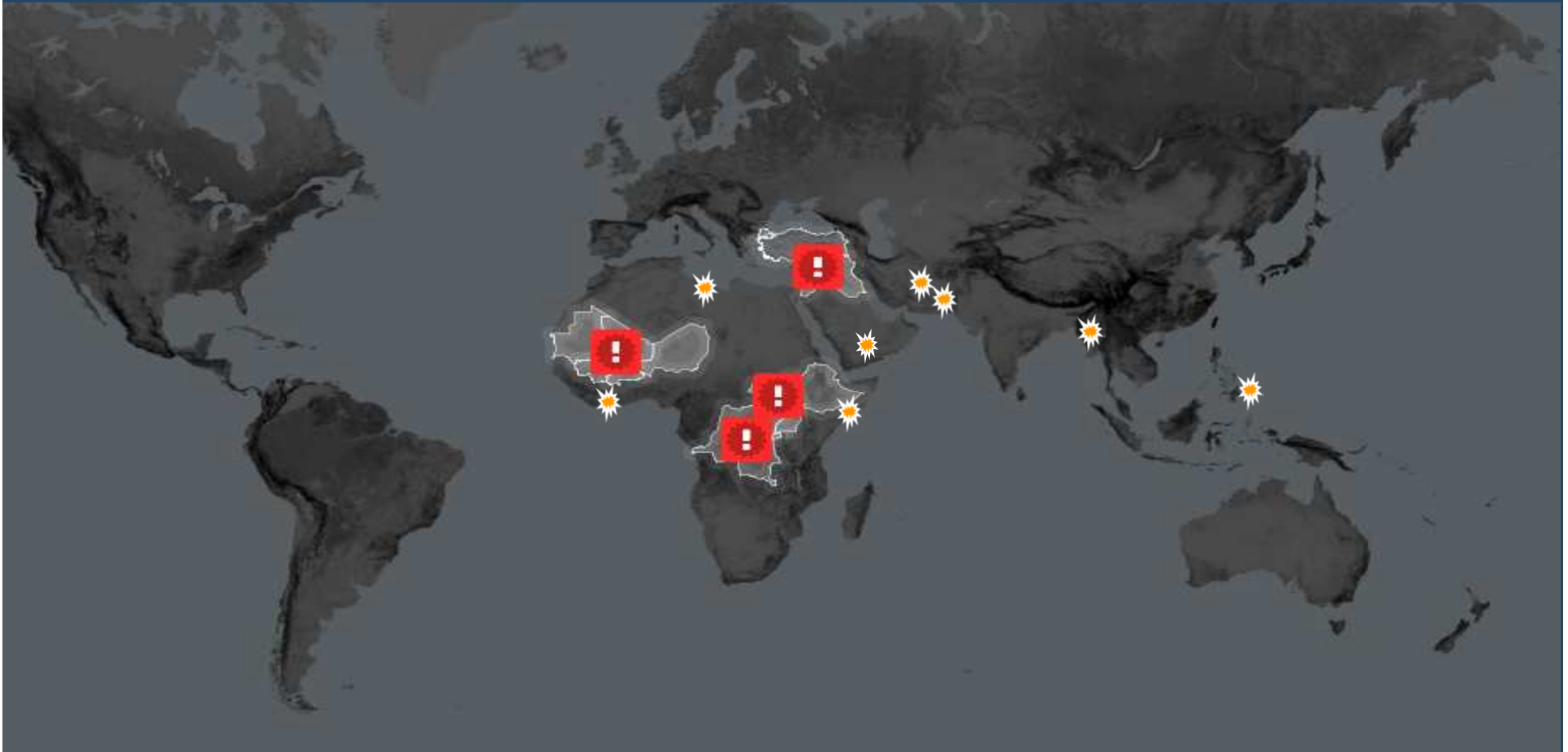


EMERGENCY RESPONSE



Urgent delivery of assistance and protection

Emergencies in 2012



*More than **875,000** refugees were forced to flee,
the highest number in more than a decade*

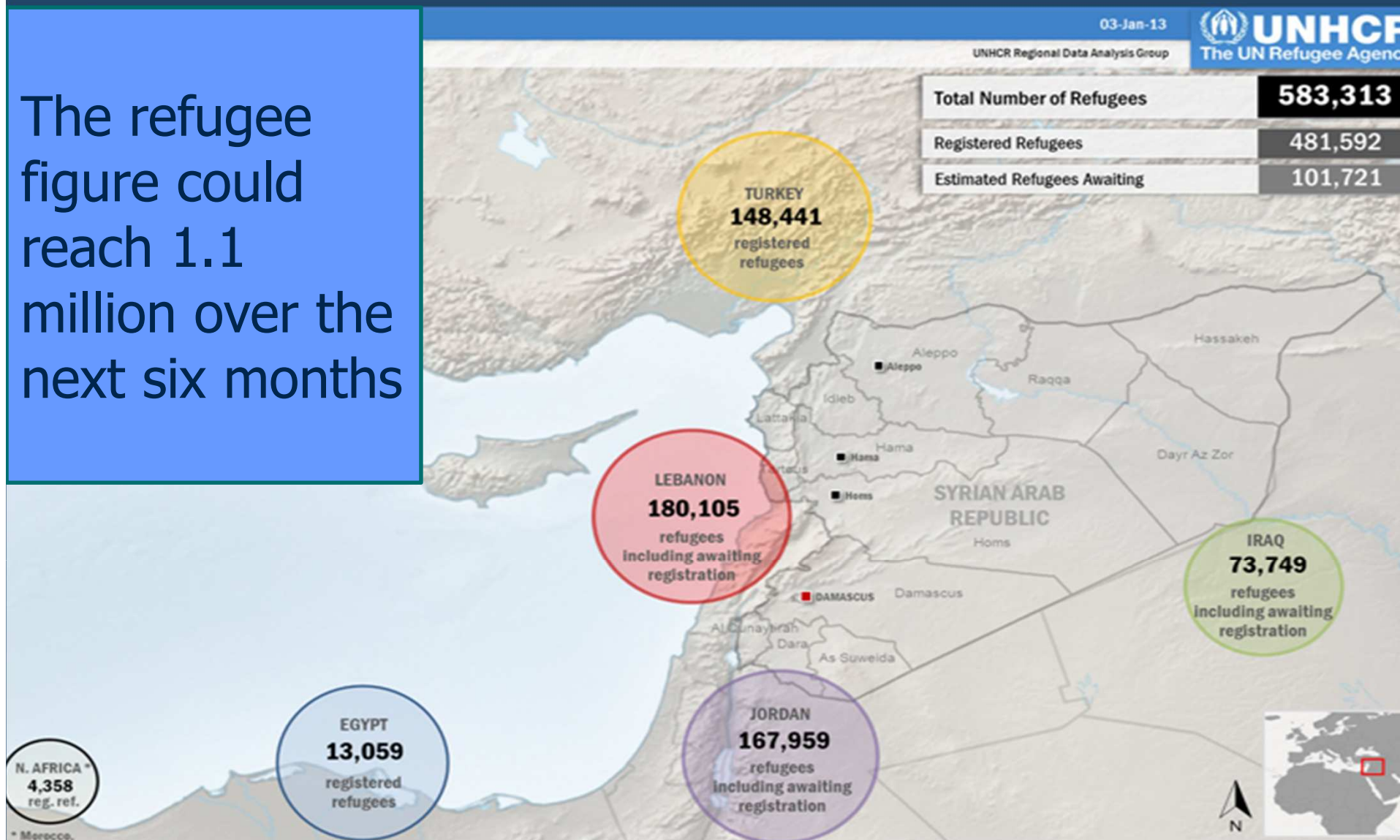
- 127 airlifts dispatched in 2012



- 435 emergency deployees to 44 countries

Syria Situation

The refugee figure could reach 1.1 million over the next six months



Challenges:

- Shelter/ Host family support
- Winterization



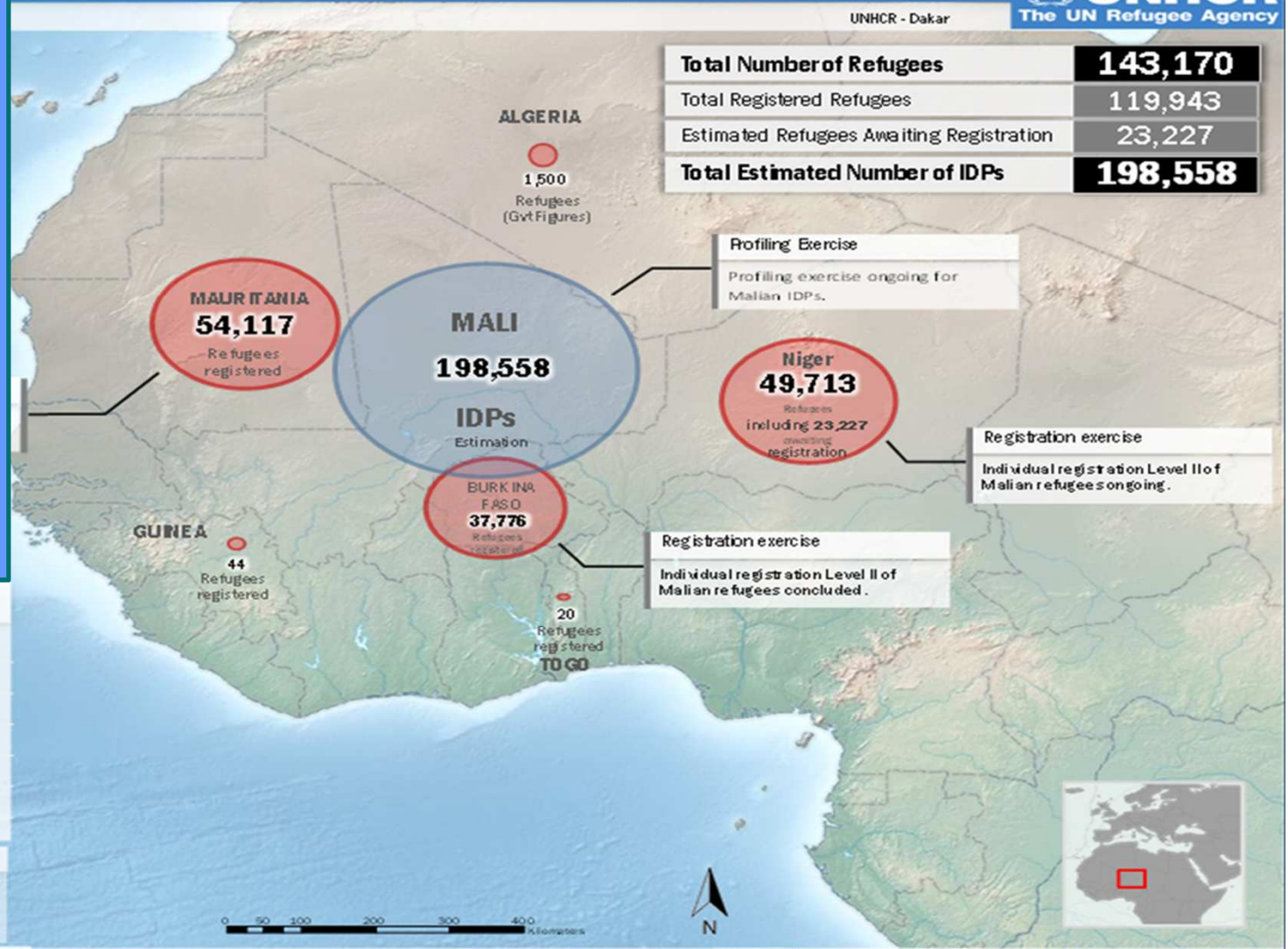
Mali Operation

More than 140,000 refugees, and almost 200,000 internally displaced

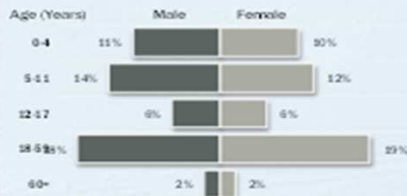
31 December 2012



UNHCR - Dakar



Age & Gender



Refugees Awaiting individual Registration



The boundaries and names listed on this map do not imply

Source: UNHCR, Govt

For more information, go to

Challenges:

- Insecure environment
- New offices/
increased presence
- Sahel drought

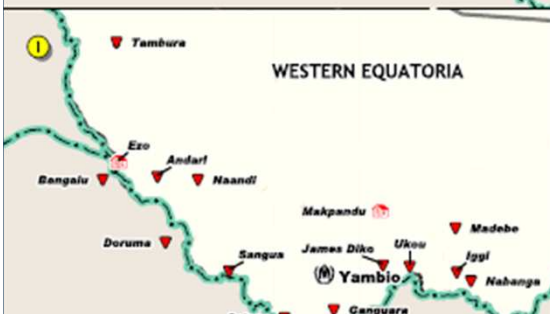
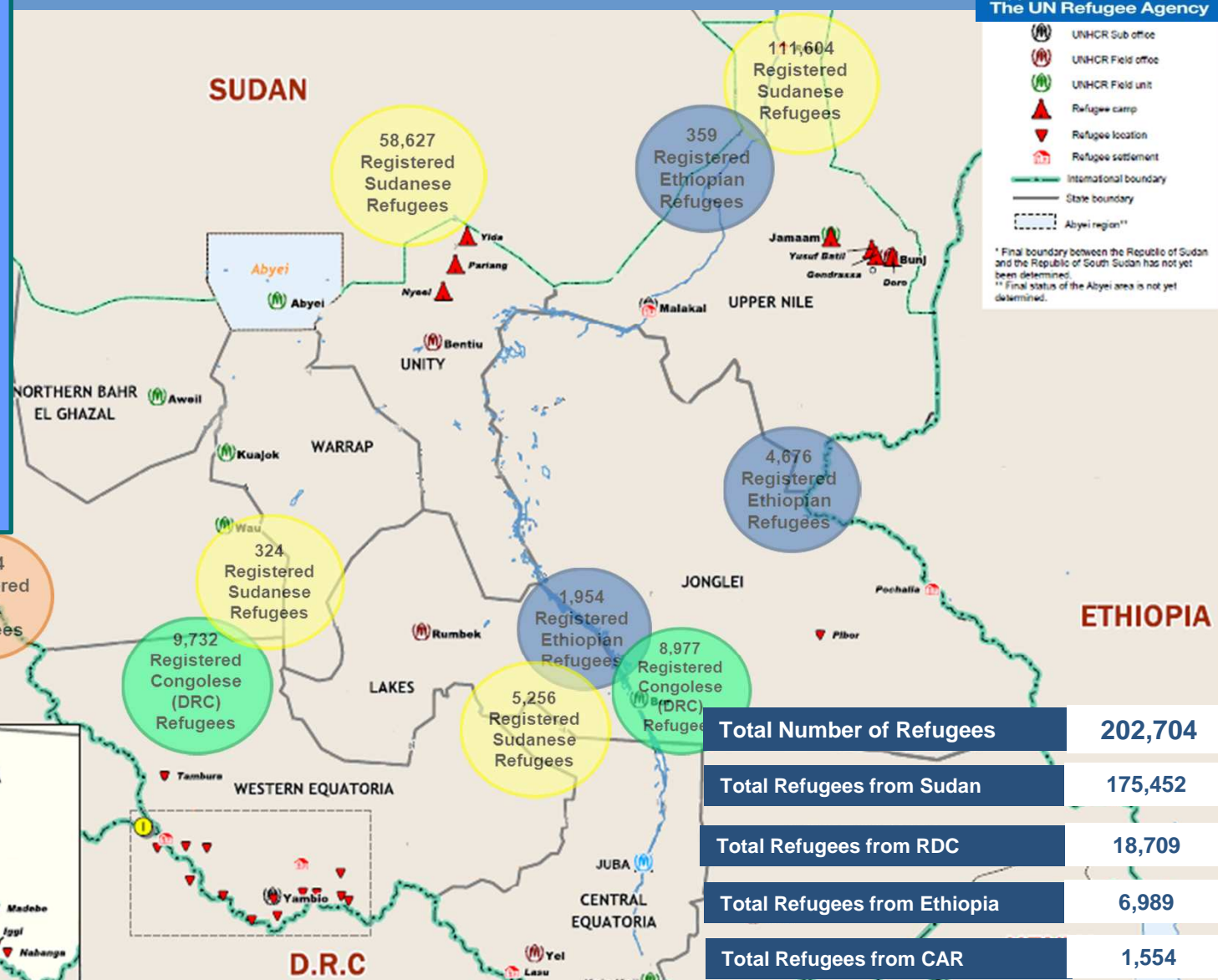


Sudan/ South Sudan

South Sudan is currently hosting more than 200,000 refugees

In addition, more than 68,000 Sudanese refugees have fled to Ethiopia

UNHCR South Sudan



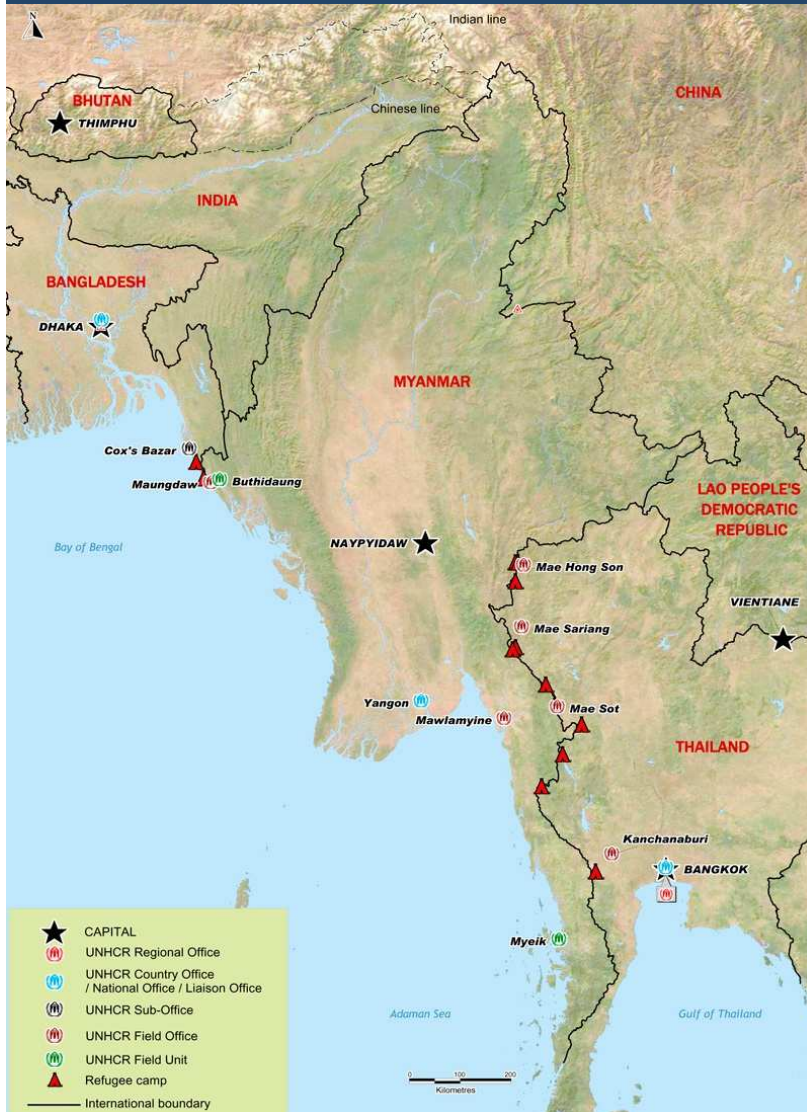
Challenges:

- Remote locations
- Poor infrastructure/ roads



Myanmar

115,000 still internally displaced following the inter-communal violence in the Rakhine state



Challenges:

- Humanitarian Space
- Limited number of operational partners



Thank you



UNHCR
The UN Refugee Agency