

# UNHCR PUBLIC HEALTH

## 2014 ANNUAL REGIONAL OVERVIEW

ASIA



PUBLIC HEALTH

REPRODUCTIVE  
HEALTH & HIV

NUTRITION &  
FOOD SECURITY

WATER  
SANITATION  
& HYGIENE

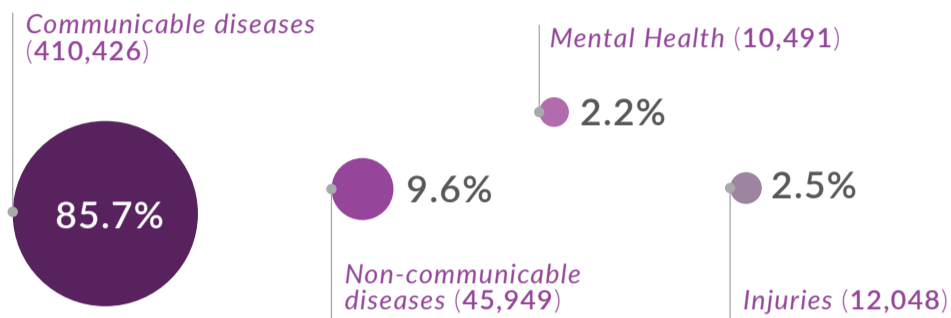
# Public Health

2014 ASIA

## DISEASE PROFILE

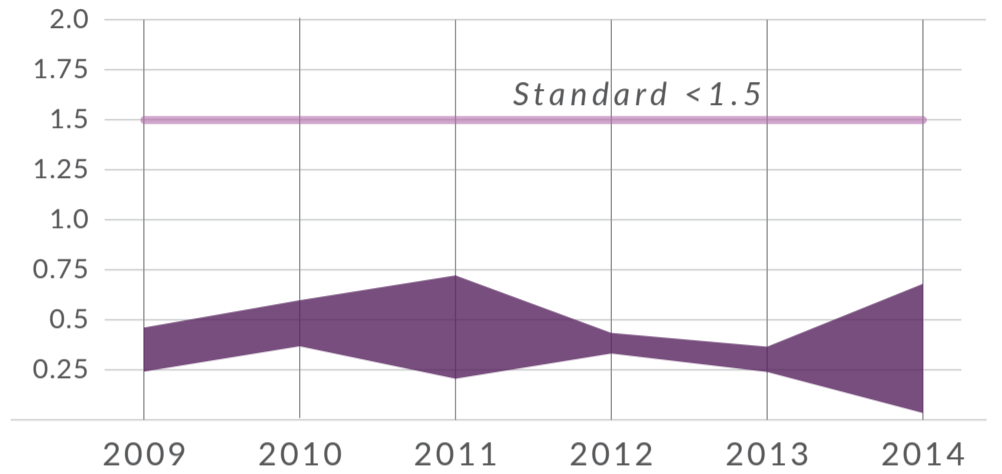
Proportion of all consultations

**478,914** Total number of consultations in 3 countries  
 9% of global disease burden among surveyed refugees



## UNDER-FIVE MORTALITY

Deaths/1,000/month (lowest-highest rates)



### Country overview

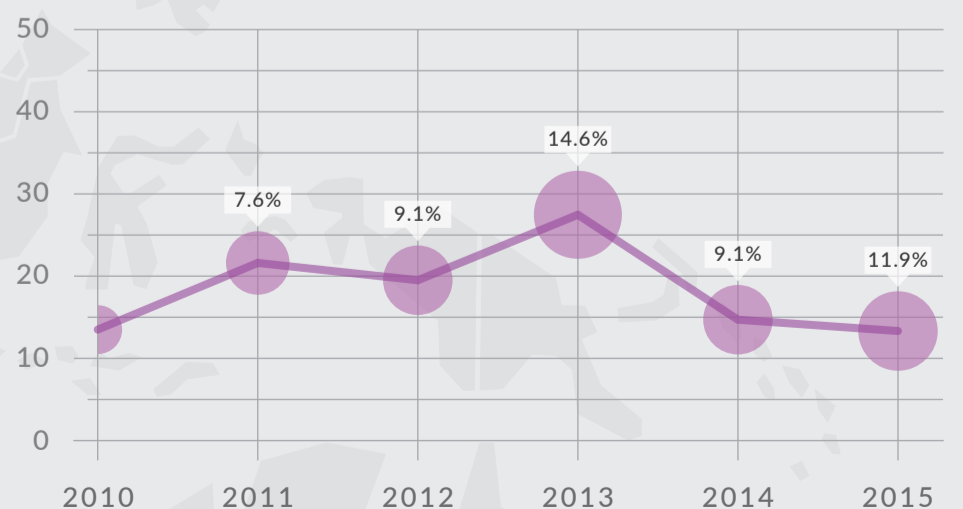
- UNDER-FIVE MORTALITY**  
Deaths/1,000/month (Standard <math>< 1.5</math>)
- Some sites exceeded the standard for under-five mortality.
- HEALTH UTILISATION RATE**  
New visits/person/year (Standard 1-4)
- MEASLES COVERAGE**  
Proportion received measles vaccination (Standard  $\geq 95\%$ )
- NR: Not reliable data

### Regional allocation

Public Health

Million (\$)

● Proportion of OL-budget



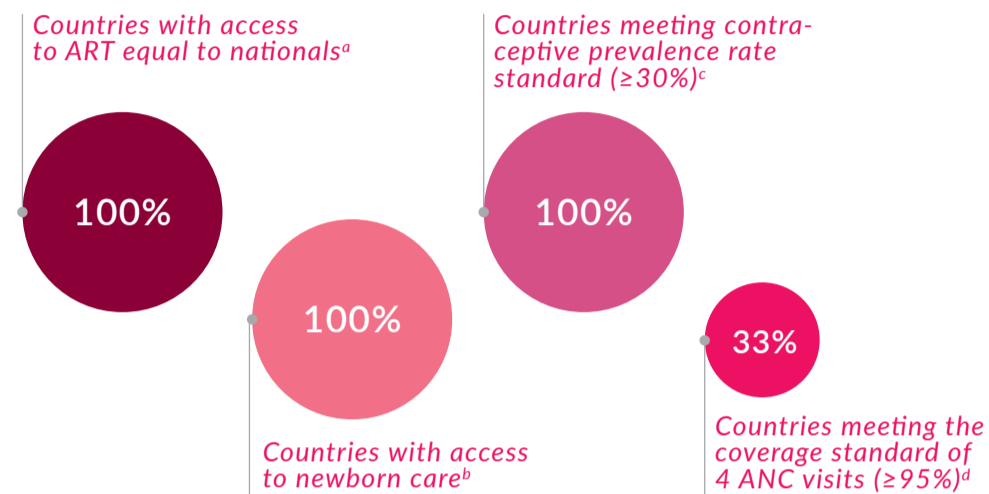
Data is extracted from UNHCR Global Focus, January 2015

# Reproductive Health & HIV

2014 ASIA

## REPRODUCTIVE HEALTH & HIV PROFILE

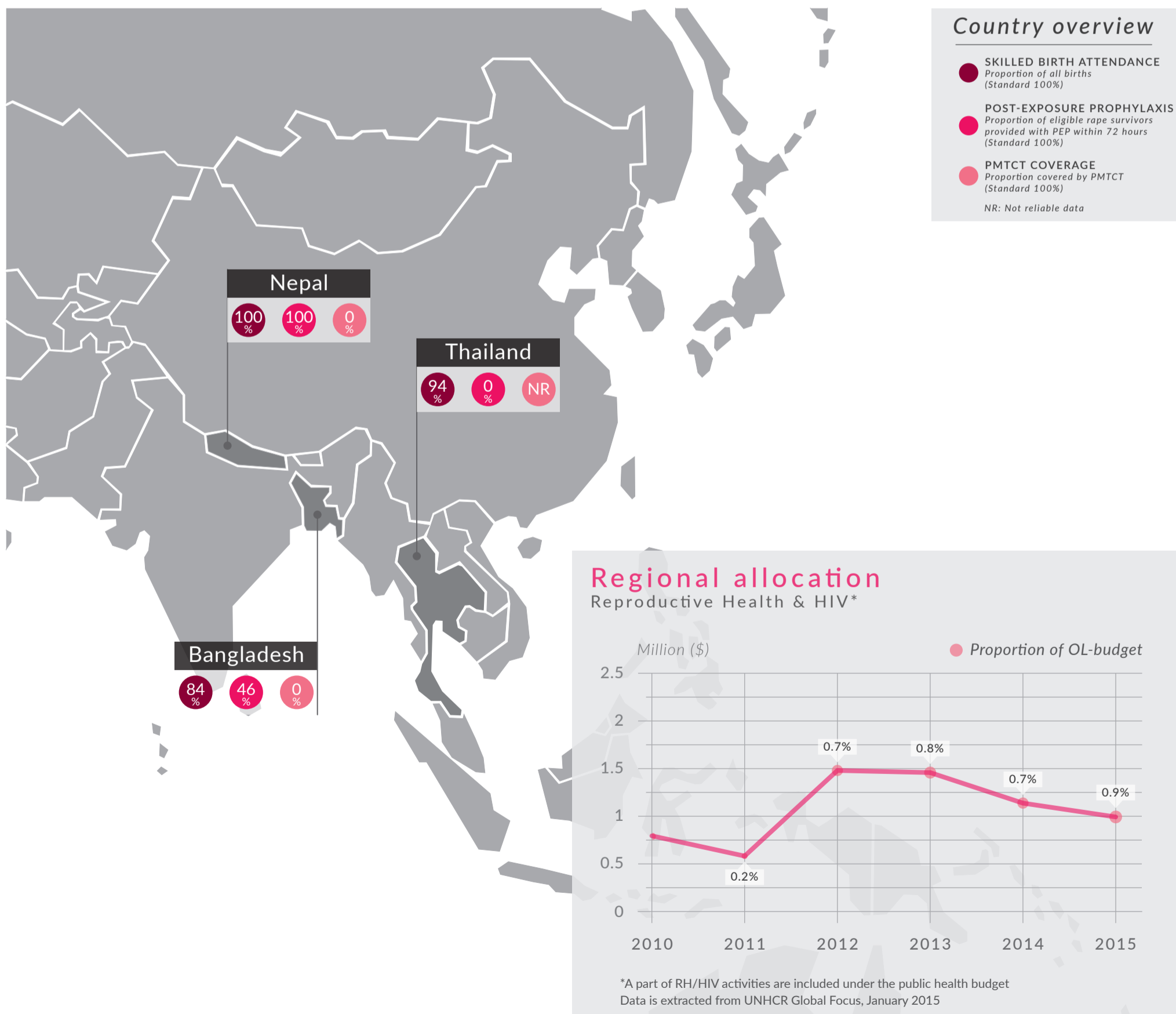
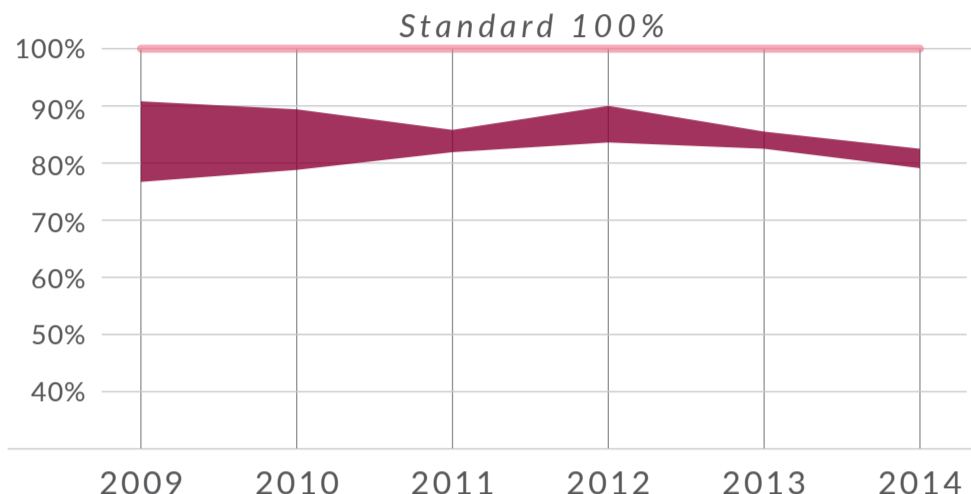
Proportion of countries



Number of countries included in analysis a-b) 6, c-d) 3

## SKILLED BIRTH ATTENDANCE

Proportion of all births (lowest-highest proportions)

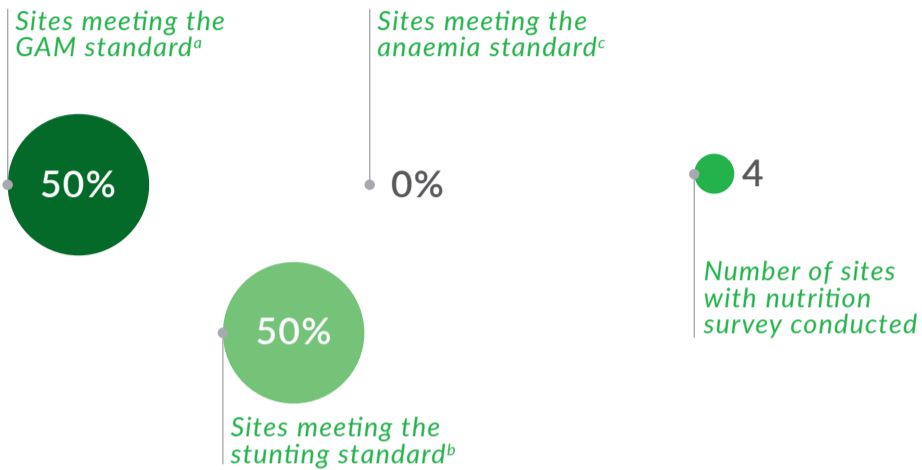


# Nutrition & Food Security

2014 ASIA

## NUTRITION PROFILE

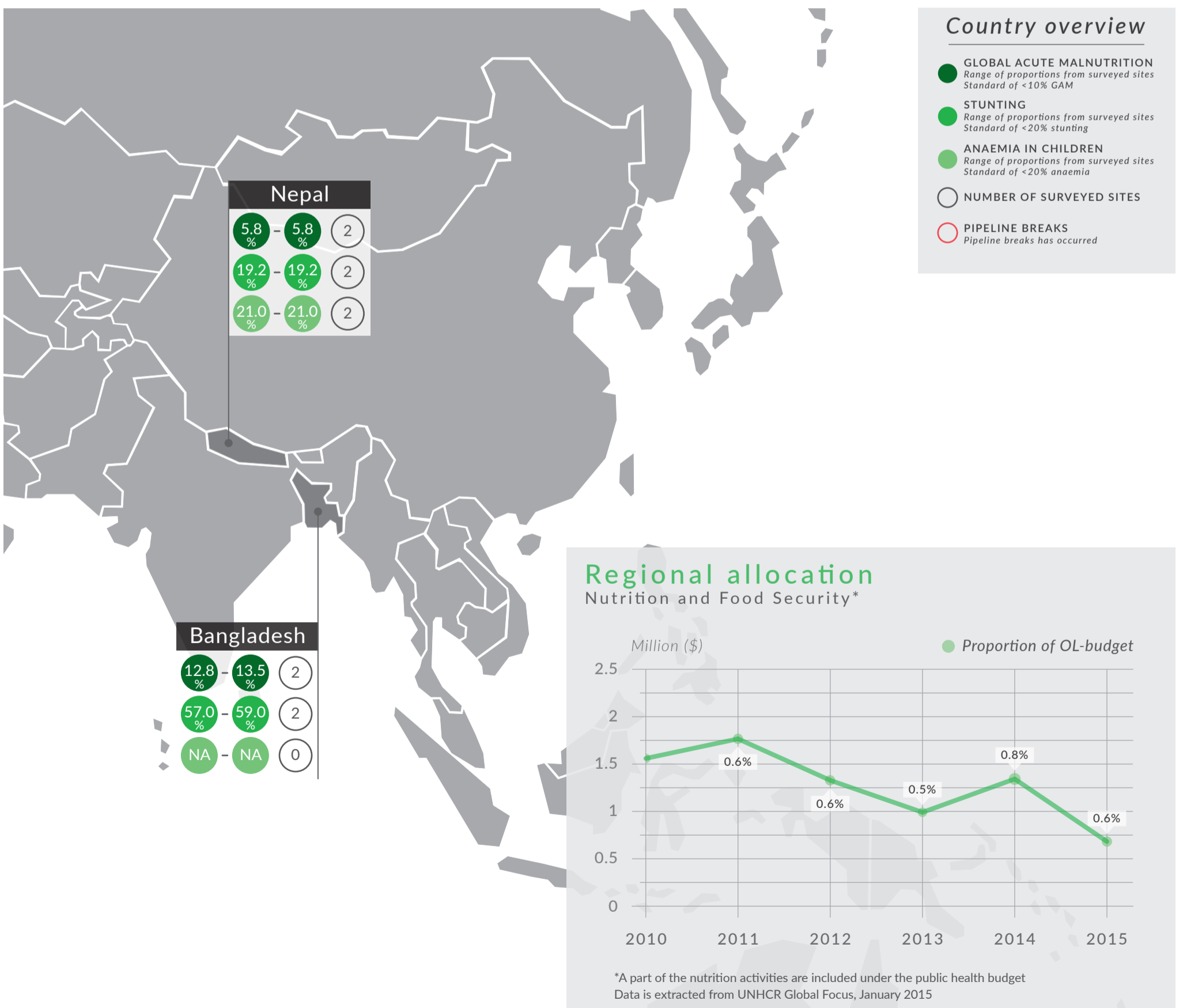
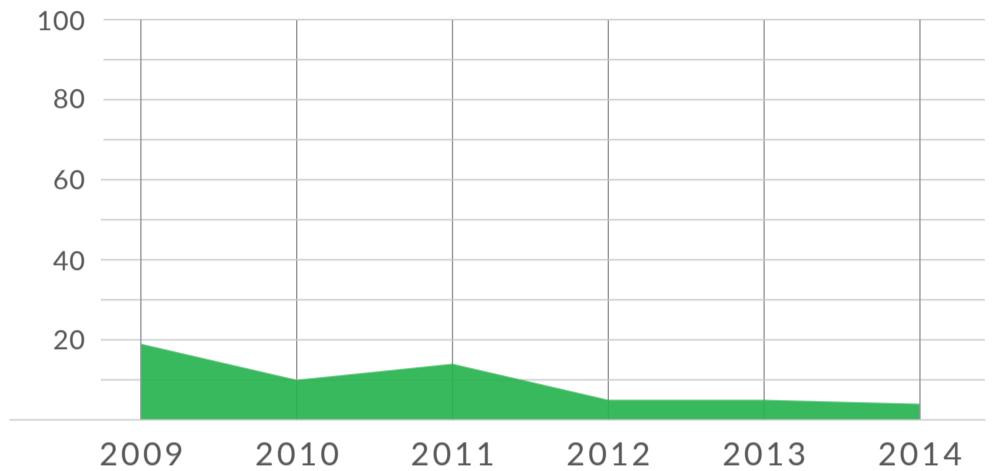
Proportion of surveyed sites



Number of sites included in analyses a-b) 4, c) 2

## NUTRITION SURVEY TRENDS

Number of sites with nutrition survey conducted

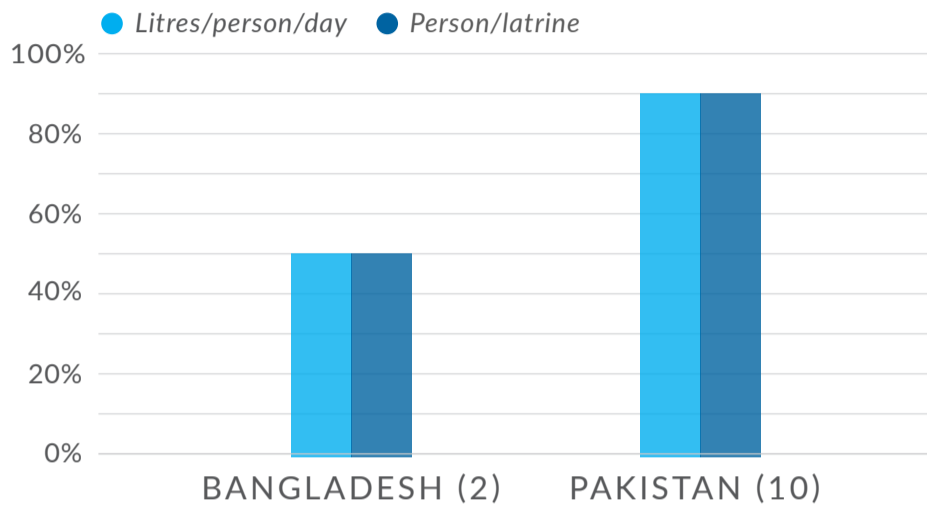


# Water, Sanitation & Hygiene

2014 ASIA

## WASH PROFILE

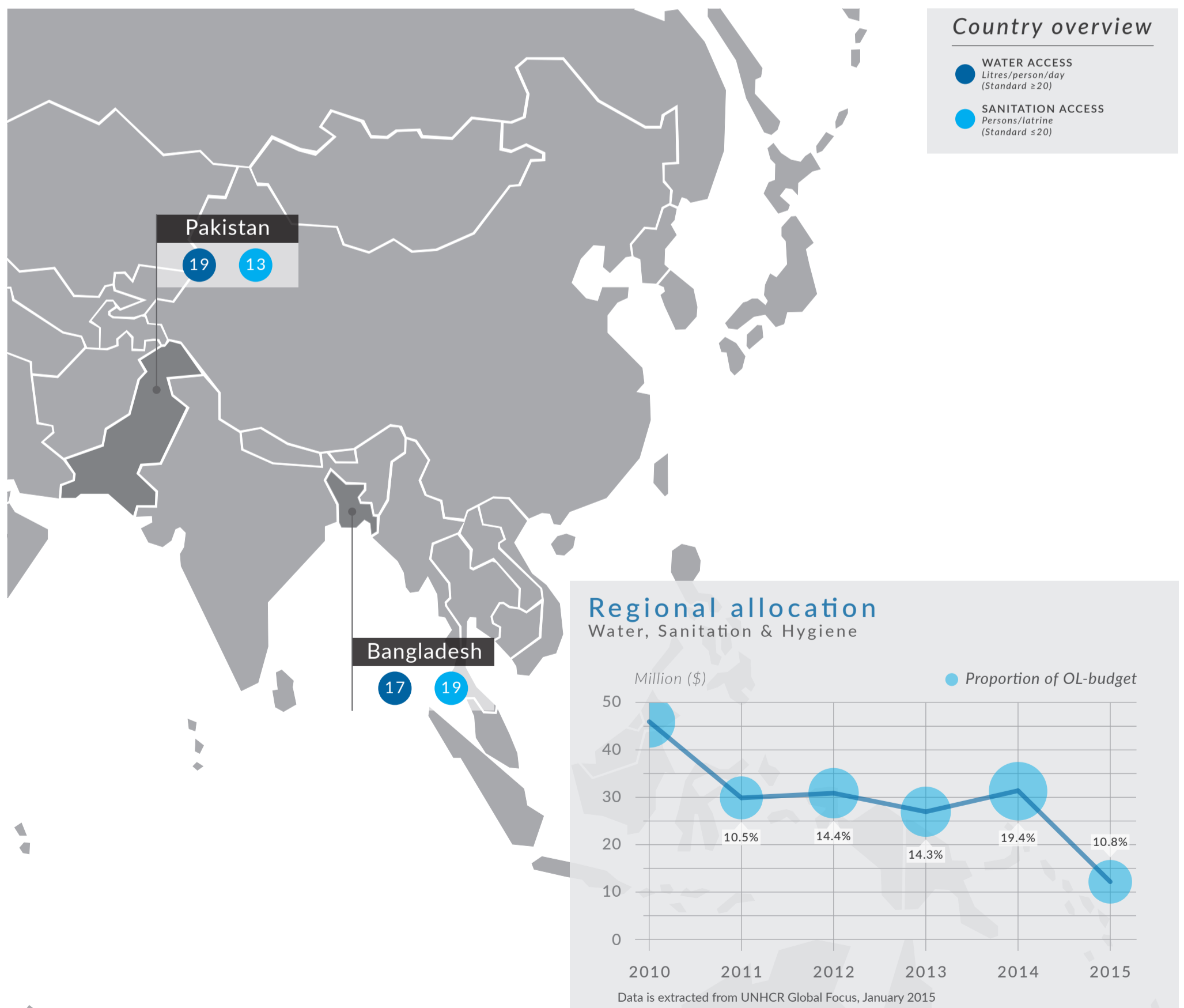
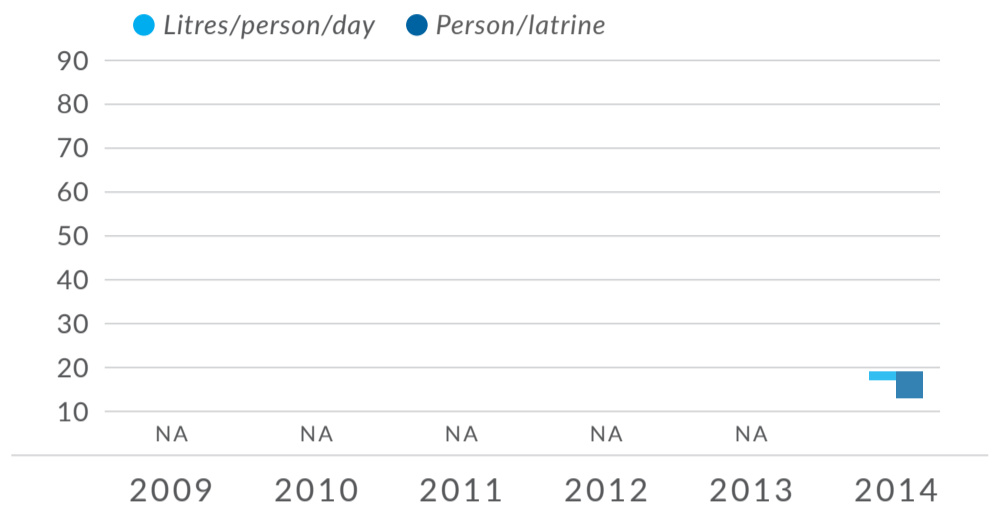
Proportion of sites meeting the standard



The figure in brackets represent the number of sites/settlements included in analysis

## WATER & SANITATION TRENDS

Regional coverage (lowest-highest values)





**United Nations High Commissioner for Refugees**  
Public Health Section  
Division of Programme Support and Management  
Rue de Montbrillant 94  
CH-1201 Geneva  
Switzerland

T: +41 22 739 8433  
F: +41 22 739 7344

E-mail: [hqphn@unhcr.org](mailto:hqphn@unhcr.org)  
[www.unhcr.org](http://www.unhcr.org)

Graphic design: Rasmus Wibæk Christensen, Copenhagen

*The boundaries shown on the maps do not imply official endorsement or acceptance by the United Nations.*

UNHCR © 2015