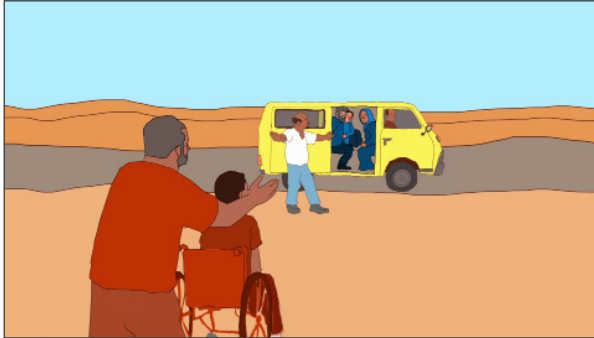


TEACHING ABOUT REFUGEES: DISCUSSION QUESTIONS

VIDEO “WHO IS AN INTERNALLY DISPLACED PERSON?”



Watch the video here: [link](#)

These questions can be used to set up a debate in class. You can choose a “for” group and an “against” group.

The questions can also be used for students to discuss and research findings in groups and write essays on their opinions and research.

HOW TO : Split the class into two groups. Below are three statements. Give out the same statement, one at a time, to both groups. Give them 5-10 minutes to come up with an answer. Let each group present their answers, followed by a debate between both groups.

After finishing a debate, repeat the process with the next statement.

1 : “There are many more internally displaced people than there are refugees but because they are still in their countries we do not need to worry about them.”

2 : “Internally displaced people are under the protection of their government so aid organizations and others should not work with them directly.”

3 : “Some internally displaced people have moved because they are no longer able to live on the land they lived on before due to environmental reasons.

This is just a type of movement within a country so we do not need to be concerned about it in the same way as we are concerned with refugees.”