

# Fact sheets on refugees, asylum-seekers, internally displaced people and stateless persons

These fact sheets contain the latest data available in UNHCR's Global Trends report on the global situation of refugees, asylum-seekers, internally displaced people and stateless persons for the year 2022.

Once you have a good grasp of basic terminology used to designate the different categories of displaced people and understand the basics of refugee rights in the [Words matter section](#) of UNHCR Teaching About Refugees teaching materials, it will be easy to read and interpret the data in the fact sheets and to use key figures in lesson planning.

All data included in the Teaching About Refugees teaching materials is compiled and verified by UNHCR and is updated regularly to reflect the global situation of forced displacement as accurately as possible.

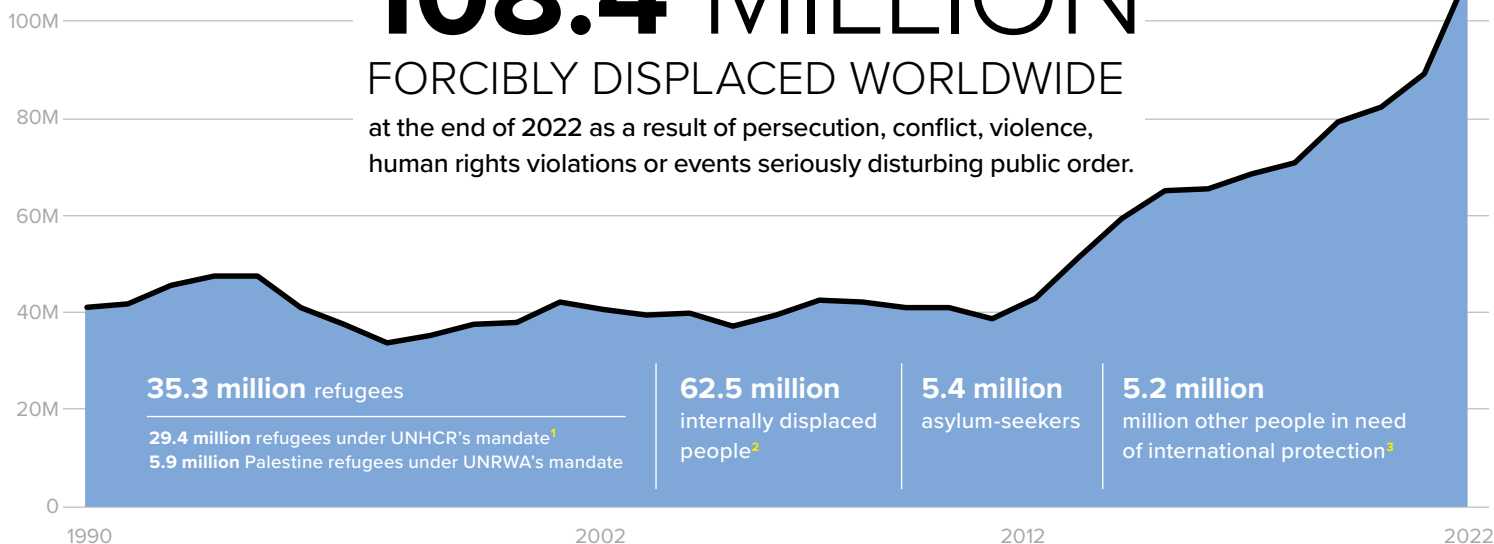
For more background and data, visit [UNHCR's Global Trends home page](#).

# Trends at a Glance

## 108.4 MILLION

### FORCIBLY DISPLACED WORLDWIDE

at the end of 2022 as a result of persecution, conflict, violence, human rights violations or events seriously disturbing public order.



## 76%

### HOSTED IN LOW- AND MIDDLE-INCOME COUNTRIES

Low- and middle-income countries hosted 76 per cent of the world's refugees and other people in need of international protection.<sup>4</sup> The Least Developed Countries provided asylum to 20 per cent of the total.

## 70%

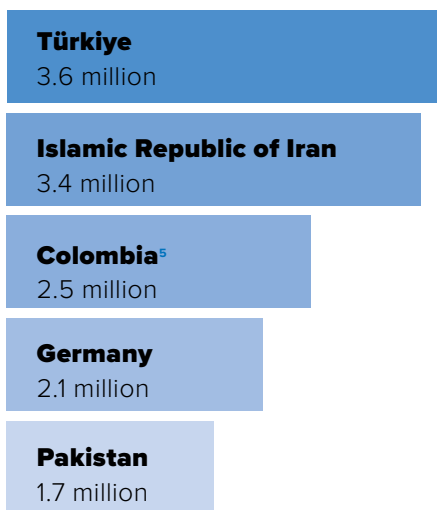
### HOSTED IN NEIGHBOURING COUNTRIES

70 per cent of refugees and other people in need of international protection lived in countries neighbouring their countries of origin.

## 3.6 MILLION

### REFUGEES HOSTED IN TÜRKIYE

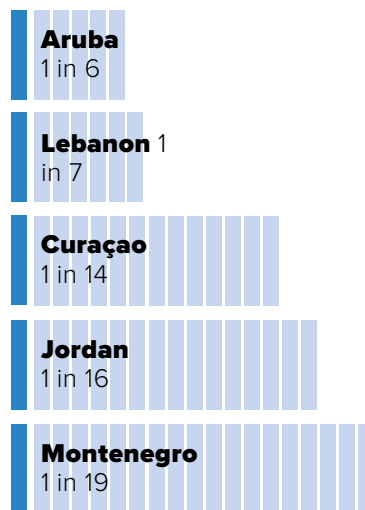
Türkiye hosted nearly 3.6 million refugees, the largest population worldwide, followed by the Islamic Republic of Iran with 3.4 million.



## 1 IN 6

### ARE DISPLACED

Relative to their national populations,<sup>6</sup> the island of Aruba (1 in 6) and Lebanon (1 in 7) hosted the largest number of refugees and other people in need of international protection, followed by Curaçao (1 in 14), Jordan (1 in 16) and Montenegro (1 in 19).<sup>7</sup>



# 2.6 MILLION NEW CLAIMS

The United States of America was the world's largest recipient of new individual applications.

**United States of America**  
730,400

**Germany**  
217,800

**Costa Rica**  
129,500

**Spain**  
118,800

**Mexico**  
118,800

# 52% ORIGINATED FROM JUST THREE COUNTRIES

52 per cent of all refugees and other people in need of international protection came from just three countries:

**Syrian Arab Republic**  
6.5 million

**Ukraine**  
5.7 million

**Afghanistan**  
5.7 million

## SOLUTIONS

# 6 MILLION DISPLACED PEOPLE RETURNED

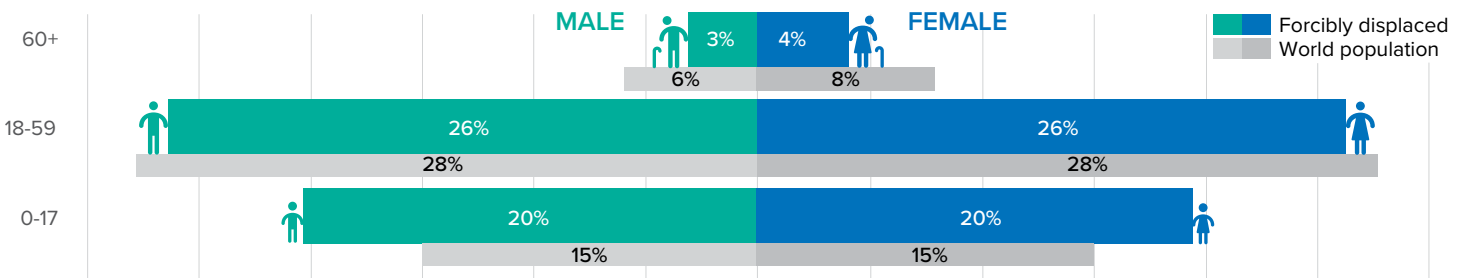
6 million displaced people returned to their areas or countries of origin in 2022, including 5.7 million internally displaced people and 339,300 refugees.

# 114,300 REFUGEES RESETTLED

114,300 refugees were resettled in 2022, double the previous year (57,500), according to government statistics. UNHCR submitted 116,500 refugees to States for resettlement.

## DEMOGRAPHICS OF PEOPLE WHO HAVE BEEN FORCIBLY DISPLACED

Children account for 30 per cent of the world's population, but 40 per cent of all forcibly displaced people.\*



DISCLAIMER: figures do not add up to 100 per cent due to rounding.

- 1 All references in this infographic to refugees under UNHCR's mandate includes people in refugee-like situations.
- 2 Source: Internal Displacement Monitoring Centre
- 3 See the definition of other people in need of international protection on the next page.
- 4 See Classifying refugee host countries by income level.
- 5 Includes refugees and other people in need of international protection.
- 6 Limited to countries hosting at least 10,000 people. Excludes Palestine refugees under UNRWA's mandate.
- 7 When 487,300 Palestine refugees in Lebanon and 2.4 million Palestine refugees in Jordan registered with UNRWA are included, the proportions in Lebanon and Jordan increase to one in four.
- 8 Sources: Estimation of IDP demographics (IDMC); Palestine refugees under UNRWA's mandate (UNRWA); Refugees, people in a refugee-like situation, asylum-seekers and other people in need of international protection are based on the available data (UNHCR) and World Population estimates (UN Department of Economic and Social Affairs).