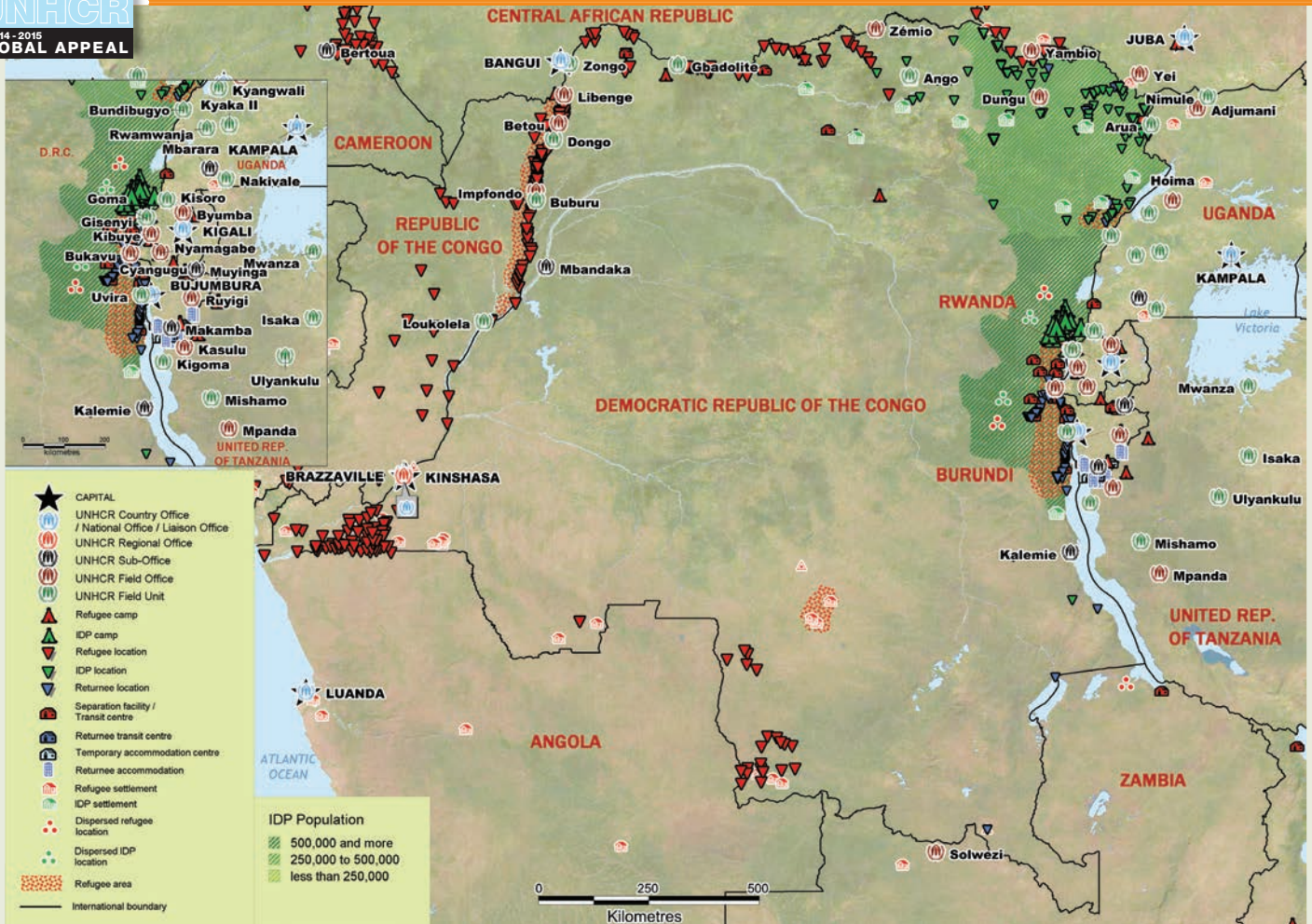




UNHCR
2014-2015
GLOBAL APPEAL

DEMOCRATIC REPUBLIC OF THE CONGO



UNHCR's planned presence | 2014

Number of offices	13
Total personnel	338
International staff	62
National staff	240
JPOs	1
UN Volunteers	31
Others	4

Overview

Working environment

- Over 60,000 refugees benefited from UNHCR's protection and assistance activities in the Democratic Republic of the Congo (DRC) during 2013. This includes close to 50,000 refugees from the Central African Republic (CAR) who had sought refuge in the DRC by mid-2013 due to the deteriorating situation in their country. These refugees crossed the border in the Ubangi region of the Equateur Province, and in the Bas Uele region of the Orientale Province of the DRC. UNHCR commenced the relocation of almost 50 per cent of them to four camps. The remaining 50 per cent of refugees are staying with host families.
- Due mainly to the ongoing instability in the eastern part of the country, about 450,000 refugees from the DRC remain in neighbouring countries, particularly Burundi, Rwanda, the United Republic of Tanzania and Uganda.

By contrast, in 2012 and 2013, over 100,000 refugees were assisted to return from the Republic of the Congo (Congo). In 2014, UNHCR anticipates facilitating the voluntary return of 36,000 refugees to the DRC, again from the Congo.

- Armed conflict is ongoing in the east of the country, resulting in large-scale internal displacement, with over 2.6 million estimated internally displaced people (IDPs) by mid-2013. UNHCR leads the protection cluster and plays a significant role in shelter and camp coordination and camp management in the country. Eighty per cent of the IDPs live with host families.
- In 2014, the Government of the DRC will provide security forces to increase security in four refugee camps, three in Equateur and one in Orientale province.

People of concern

The main groups of people of concern planned for under the DRC operation in 2014 include: refugees from the CAR who fled insecurity and violence in their country; 2,6 million IDPs living in camps or in host families who fled the armed conflict in eastern DRC; Angolan refugees residing in the DRC who have not opted for voluntary repatriation following the application of the cessation clauses; unregistered Rwandan refugees in the eastern DRC for whom registration will be carried out with a view to facilitating durable solutions; and returnees who have been repatriated from the Congo and Burundi.

Planning figures

Type of population	Origin	Dec 2013		Dec 2014		Dec 2015	
		Total in country	Of whom assisted by UNHCR	Total in country	Of whom assisted by UNHCR	Total in country	Of whom assisted by UNHCR
Refugees	Burundi	5,370	5,370	1,370	1,370	-	-
	Central African Rep.	50,000	50,000	50,000	50,000	25,000	25,000
	Rwanda	141,190	6,220	116,190	4,220	91,190	2,220
	Various	7,010	7,010	7,010	7,010	7,010	7,010
Asylum-seekers	Burundi	560	560	260	260	-	-
	Congo	30	30	-	-	-	-
	Rwanda	450	450	120	120	-	-
	Various	90	90	40	40	40	40
Returnee arrivals during year (ex-refugees)	Dem. Rep. of the Congo	56,500	56,500	40,000	40,000	40,000	40,000
Internally displaced	Dem. Rep. of the Congo	2,600,000	517,540	1,950,000	517,540	1,475,000	517,540
Returnee arrivals during year (ex-IDPs)	Dem. Rep. of the Congo	-	-	650,000	650,000	475,000	475,000
Others of concern	Angola	23,000	23,000	-	-	-	-
Total		2,884,180	666,760	2,814,980	1,270,550	2,113,230	1,066,800

| Response |

Needs and strategies

In 2014, UNHCR and its partners will enhance the self-reliance and livelihood components of the assistance provided to refugees, in addition to addressing their basic needs. They will also focus on providing shelter and education assistance to refugees and IDPs.

For refugees from the CAR, UNHCR will continue to provide basic assistance in the form of shelter and non-food items (NFIs), as well as carry out activities related to reproductive health and HIV/AIDS.

To seek durable solutions for long-term refugee situations such as for the Angolan and Rwandan refugees, UNHCR will

continue to work with the governments concerned through tripartite commissions, and facilitate the local integration or voluntary repatriation of these groups.

In support of IDPs, UNHCR will continue to lead the protection cluster and coordinate protection activities with a focus on life-saving activities and protection monitoring, with the aim of reducing the risk of sexual and gender based violence (SGBV).

In order to advance the reintegration of returnees in the DRC, UNHCR will continue to address their basic needs in the areas of health, shelter, and education, and promote peaceful cohabitation by conducting sensitization activities in local communities.

Main objectives and targets for 2014

The following matrix contains examples of some of the main activities planned in 2014. Using a selection of objectives from UNHCR's programme plans for the 2014-2015 biennium, it is designed to illustrate:

- what – under the global needs assessment planning and prioritization process – has been planned (**Planned activities**) for particular groups of people of concern (**People of concern**);
- the identified needs that can be covered if full and flexible funding is made available (**2014 comprehensive target**); and
- the needs that may not be met if funding falls short of the ExCom-approved budget (**Potential gap**). The estimation of a potential gap is based on the country operation's own assessment of the likely impact of a global funding shortfall. Calculations are based on various criteria, including the particular context, strategic priorities and

experience of resource availability for the respective area of activity in previous years.

Activities under objectives on child protection (including best interest determination), education and prevention and response to sexual and gender-based violence (SGBV) are core areas which are given priority in the allocation of funding (**priority area**). In order to ensure the necessary flexibility in the allocation of funds, UNHCR relies on unrestricted contributions from its donors.

It should be understood that in some cases, targets for activities or delivery of services may not be reached for reasons other than a funding shortfall, e.g. lack of access to people of concern, cases not reported, changing circumstances, security problems, insufficient capacity to implement all programmes planned, etc. In the Global Report 2014, an explanation of why any target may not have been reached will be provided.

PLANNED ACTIVITIES	PEOPLE OF CONCERN	2014 COMPREHENSIVE TARGET	POTENTIAL GAP
Basic needs and essential services			
Health status of the population improved			
In 2014, UNHCR and its partners plan to provide access to essential drugs and primary health care for the most vulnerable Central African refugees, and to help them settle temporarily within the host country.			
Number of health facilities equipped/constructed/rehabilitated	Central African refugees	3	0 gap
Shelter and infrastructure established, improved and maintained			
UNHCR and its partners plan to increase the construction and allocation of shelters to ensure that as many families as possible have access to adequate housing while temporarily settled in the host country.			
Number of people of concern receiving transitional shelter	Central African refugees	50,000	37,500
Number of kilometres of access road constructed/repaired	Central African refugees	10 km	5 km
Core relief items provided			
UNHCR and its partners plan to maintain the procurement and distribution of NFIs and core relief items to households of Central African refugees in order to ensure that they live in adequate conditions while they settle temporarily in the host country.			
Number of households receiving core relief items	Central African refugees	10,000	0 gap
Number of women receiving sanitary materials	Central African refugees	16,250	0 gap
Population has optimal access to education			
UNHCR and its partners plan to increase the number of educational facilities being constructed and maintained in order to improve access for internally displaced people (IDPs) to the national educational system.			
Number of educational facilities constructed or improved	IDPs	60	60

Security from violence and exploitation

Risk of sexual and gender-based violence (SGBV) is reduced and quality of response improved

In 2014, UNHCR and its partners plan to increase the provision of training and legal assistance related to SGBV to its Government and civil society partners in order to improve their capacity to respond to SGBV; the Office and its partners will also strengthen community prevention and response to SGBV, as well as enhance referrals of victims to relevant services.

Number of partner, government and UNHCR staff trained on SGBV prevention and response	IDPs	1000	priority area
Number of community-based committees working on SGBV prevention and response	IDPs	60	priority area

Community empowerment and self-reliance

Peaceful coexistence with local communities promoted

In 2014, UNHCR intends to increase the number of community sensitization campaigns and individuals reached by these in order to promote peaceful coexistence between IDPs and host communities in the east of the DRC.

Number of people reached through community sensitization campaigns	IDPs	1,500,000	800,000
Number of campaigns conducted	IDPs	300	150

Self-reliance and livelihoods improved

In 2014, UNHCR plans to increase support to a targeted population of Congolese returnees in the fields of agriculture, livestock, fisheries and entrepreneurship in order to allow them to sustain themselves and make their reintegration more sustainable.

Number of people of concern receiving start-up kits and supplies for agriculture/livestock/fisheries activities	Congolese returnees	13,000	11,000
Number of people of concern provided with entrepreneurship/business training	Congolese returnees	3,600	3,600

Fair protection process and documentation

Civil registration and civil status documentation strengthened

In 2014, UNHCR plans to advocate for increased issuance of birth certificates for a targeted population of Congolese refugees who are repatriated to the DRC in order to facilitate their reintegration.

Number of children registered and issued documentation under regular birth registration procedures	Congolese returnees	7,200	0 gap
Number of people of concern registered and issued documentation through procedures for late birth registration	Congolese returnees	720	540

| Implementation |

Partners

Implementing partners

Government agencies:

Commission Nationale pour les Réfugiés (Ministry of Interior)

NGOs:

Actions et Intervention pour le Développement et l'Encadrement social, African Initiative for Relief and Development, *Agir pour le genre*, *Association pour le Développement social et la Sauvegarde de l'Environnement*, *Équipe d'Encadrement des Réfugiés urbains de Kinshasa*, *Femmes en mission pour soutien et action aux vulnérables confondus*, German Agro-Action, *Groupe d'appui conseils aux réalisations pour le développement endogène*, International Emergency and Development Agency Relief, INTERSOS, *Médecins d'Afrique*, *Mouvement international des droits de l'enfant*, *Première urgence - Aide médicale*, Search for Common Ground, Women for Women International

Others:

IOM, UNOPS, UNV

Operational partners

Others:

UNICEF, WFP

Coordination

UNHCR's main governmental partner in the DRC will continue to be the *Commission Nationale pour les Réfugiés* (CNR) within the Ministry of Interior, particularly in the areas of refugee registration and assistance.

As cluster lead for the protection, shelter, and camp coordination and camp management clusters in the context of internal displacement, UNHCR will collaborate closely with Government authorities, providing technical assistance and inputs to draft legislation.

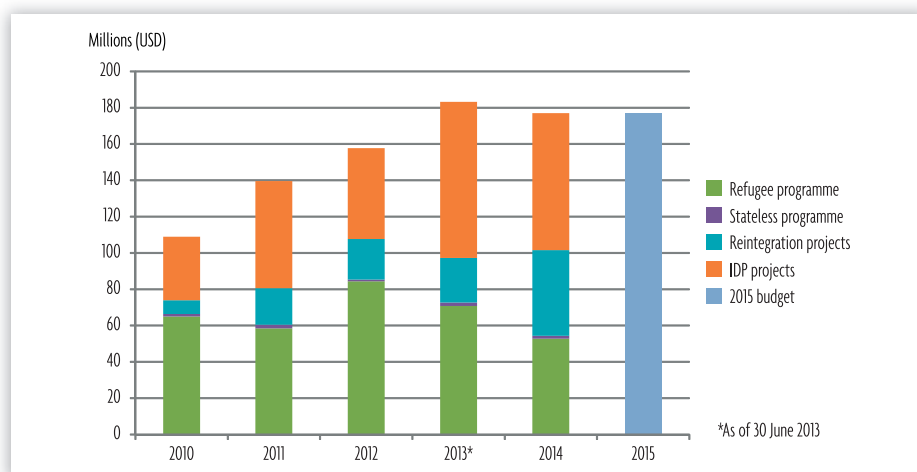
The Office will actively take part in the process detailed in UN Security Council Resolution 2098 that foresees the transfer of certain tasks of the UN mission in DRC (MONUSCO) to the UN country team.

UNHCR's activities are reflected both in the Humanitarian Assistance Plan (HAP) and in the United Nations Development Assessment Framework (UNDAF). In 2014, UNHCR will continue to collaborate with national and international partners present in the country, and further engage in building the capacity of partner NGOs.

| Financial information |

The financial requirements for UNHCR's operation in the DRC increased from USD 109 million in 2010 to a revised 2013 budget of USD 183.2 million, mainly to accommodate an increase in the refugee population as well as in the number of IDPs as a result of continued conflict in CAR and in the east of the country, respectively. In 2014, the financial requirements for the DRC are set at USD 177 million, with USD 52.8 million allocated for the refugee programme, USD 75.4 million allocated for protection and assistance of IDPs, USD 47.1 million allocated for the reintegration of Congolese returnees, and USD 1.6 million for statelessness issues.

Budgets for the Democratic Republic of the Congo | 2010–2015



2014 budget for the Democratic Republic of the Congo | USD

Budget breakdown	PILLAR 1 Refugee programme	PILLAR 2 Stateless programme	PILLAR 3 Reintegration projects	PILLAR 4 IDP projects	Total
2013 revised budget (as of 30 June 2013)	70,765,219	1,893,932	24,572,564	85,965,703	183,197,418
Favourable protection environment					
International and regional instruments	0	515,538	0	353,491	869,029
Law and policy	511,969	0	0	0	511,969
Administrative institutions and practice	222,781	0	0	0	222,781
Access to legal assistance and remedies	267,766	0	0	0	267,766
Public attitude towards people of concern	353,990	30,238	940,053	0	1,324,281
Subtotal	1,356,506	545,776	940,053	353,491	3,195,826

Budget breakdown	PILLAR 1 Refugee programme	PILLAR 2 Stateless programme	PILLAR 3 Reintegration projects	PILLAR 4 IDP projects	Total
Fair protection processes and documentation					
Registration and profiling	273,990	0	0	8,884,455	9,158,444
Status determination procedures	868,114	0	0	0	868,114
Individual documentation	1,010,551	0	0	0	1,010,551
Civil registration and status documentation	176,781	1,101,704	1,003,820	1,406,982	3,689,287
Subtotal	2,329,436	1,101,704	1,003,820	10,291,436	14,726,396
Security from violence and exploitation					
Protection from effects of armed conflict	0	0	2,993,820	7,965,473	10,959,292
Prevention and response to SGBV	2,006,002	0	2,935,279	2,635,473	7,576,753
Freedom of movement and detention risk reduced	17,121	0	746,910	0	764,031
Protection of children	1,103,297	0	0	691,982	1,795,279
Subtotal	3,126,421	0	6,676,009	11,292,927	21,095,356
Basic needs and essential services					
Health	2,964,191	0	3,087,549	0	6,051,741
Reproductive health and HIV services	1,391,470	0	3,009,549	1,791,982	6,193,001
Food security	961,969	0	0	0	961,969
Water	253,990	0	2,800,053	0	3,054,043
Sanitation and hygiene	482,980	0	1,200,080	0	1,683,059
Shelter and infrastructure	5,389,521	0	2,889,820	16,519,894	24,799,236
Basic and domestic items	1,367,980	0	1,803,403	8,853,782	12,025,164
Services for people with specific needs	1,084,440	0	1,224,080	0	2,308,520
Education	1,980,151	0	2,497,640	3,840,702	8,318,493
Subtotal	15,876,692	0	18,512,173	31,006,360	65,395,225
Community empowerment and self-reliance					
Community mobilization	317,980	0	663,820	0	981,799
Coexistence with local communities	555,532	0	1,201,910	1,128,491	2,885,932
Natural resources and shared environment	315,980	0	931,936	0	1,247,916
Self-reliance and livelihood activities	1,737,153	0	3,050,730	3,452,231	8,240,113
Subtotal	2,926,644	0	5,848,396	4,580,722	13,355,761
Durable solutions					
Voluntary return	4,314,269	0	4,587,459	0	8,901,729
Reintegration	0	0	2,205,730	0	2,205,730
Integration	6,586,936	0	0	0	6,586,936
Resettlement	786,323	0	0	0	786,323
Subtotal	11,687,528	0	6,793,189	0	18,480,717
Leadership, coordination and partnerships					
Coordination and partnerships	0	0	1,561,836	906,982	2,468,818
Camp management and coordination	707,980	0	0	3,881,982	4,589,961
Donor relations and resource mobilization	581,969	0	1,747,666	741,982	3,071,617
Subtotal	1,289,949	0	3,309,502	5,530,945	10,130,396
Logistics and operations support					
Logistics and supply	11,831,063	0	2,060,220	8,435,473	22,326,756
Operations management, coordination and support	2,333,465	0	1,985,730	3,944,353	8,263,548
Subtotal	14,164,529	0	4,045,949	12,379,825	30,590,303
2014 total budget	52,757,703	1,647,481	47,129,091	75,435,705	176,969,980