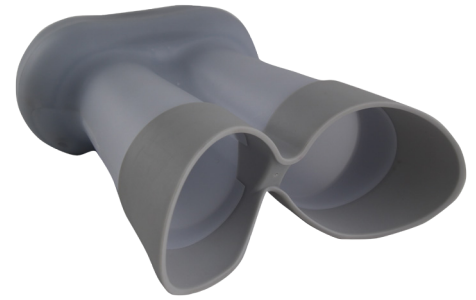


IriShield™ BK 2121U

ULTRA-COMPACT, AUTO-CAPTURE IRIS SCANNER, COMPLETE WITH ON-BOARD IRIS RECOGNITION AND A PKI-BASED SECURITY INFRASTRUCTURE THAT ENSURES END-TO-END DATA SECURITY.

The IriShield™ BK 2121U features IriTech's superior iris matching and iris image quality assessment algorithms to provide good quality images and avoid false positives while maximizing true positive identification rates. The embedded algorithms can complete a matching query against 1,000 stored templates in 0.5 second.



► FEATURES

- **Secure on-board processing:** All key functions like iris capture, iris recognition, encryption and digital signature are done on-board in a secure environment.
- **Secure data & communication:** Each IriShield device has its own 2048 bit RSA key securely generated on-board for encryption and digital signature.
- **NIST-proven extremely accurate iris matching algorithm**
- **Tamper-proof**
- **Internal gallery:** 1,000 iris templates (500 IDs)
- **Supported interface connections:** USB, UART
- **Supported OS's:** Android/ Windows/ WinCE/ Linux/ eLinux/ Mac/proprietary OS/ Non-OS

► ADVANTAGES

- Cost-effective
- Ultra-compact, light weight
- Supporting power management functions
- FREE Software Development Kit (SDK)

► NOTABLE PROJECTS

- **Government:** Aadhaar project (UIDAI), Northrop Grumman, UNHCR
- **Commercial:** Averda International Workforce Management, China Coal & Mining

► CERTIFICATIONS



Scan QR Code with your Smart Phone to get demo IriShield Software

► SPECIFICATIONS

Capture Mode	Auto
Capture Distance	3.5 cm - 14.5 cm(5.3 inches -5.7 inches) from the front of camera Lens (Optimal distance = 14 cm (5.5 inches), Focal depth = 1.0 cm (0.4 inch), Field of View = 3.3 cm x 2.4 cm at 15 cm (1.3 inches x 0.9 inch at 5.9 inches)
Image Format	ISO Standard 19794-6 (2005 & 2011), (640 x 480 Pixels, 8 bit Grayscale), full support of K1, K2, K3, K7
Sensor Resolution	VGA
Dimensions	IriShield-USB: 124 mm x 63.2 mm x 42.5 mm (4.9 inches x 2.49 inches x 1.68 inches) Goggle: 200 mm x 145 mm x 72 mm (7.9 inches x 5.7 inches x 2.8 inches)
Power	Single USB Bus Powered (DC +5V±5%) (Max power consumption=430mA)
Illumination	Near infrared LED
Environmental	-20°C to +60°C (Storage); 0°C to +50°C (Operating); 10% to 90% Humidity (Non-Condensing)*
Usage	Indoor; Outdoor (avoid direct sunlight and bright reflections)
Compliance & Certificates	Eye safety standard (IEC 62471:2006-07), RoHS, FCC-Class B, IP54
Resolution	Spatial : ≥ 60% @ 4.0 Lp/mm, Pixel : ≥ 16 Pixels/mm
Connectivity	USB 2.0 (IriShield™-USB Series), UART/ RS-232 (IriShield™-UART Series)
Security	RSA (2048-bit) and AES (256-bit); X509 Certificate, PFX/PKCS#12 Certificate, RSA key pair generated on-board
Matching Speed	2000 matches per second (exclusive of communication time between the camera and the host)
Ancillary SW	Drivers, SDK (C/C++, .NET, C#/VB, Java), Demo Application with Sample codes
Host OS	Windows Family, Linux Family, WinCE, Embedded Linux, Android, Mac, proprietary OS or Non-OS

CONTACT US

Technical Support
collaboration@iritech.com

Sales & Marketing
sales@iritech.com

General Inquiries
info@iritech.com

Website: www.iritech.com

FIND US

HEADQUARTERS

11166 Fairfax Boulevard, Suite 302,
Fairfax, VA 22030, U.S.A
Tel. +1.703.877.2135 Fax:+1.703.877.2136

R&D CENTERS

Seoul (Korea), Ho Chi Minh (Vietnam)