



IFRC Migration  
Unit

# *NATURAL DISASTERS AND MOBILITY – DATA COLLECTION AND ANALYSIS*

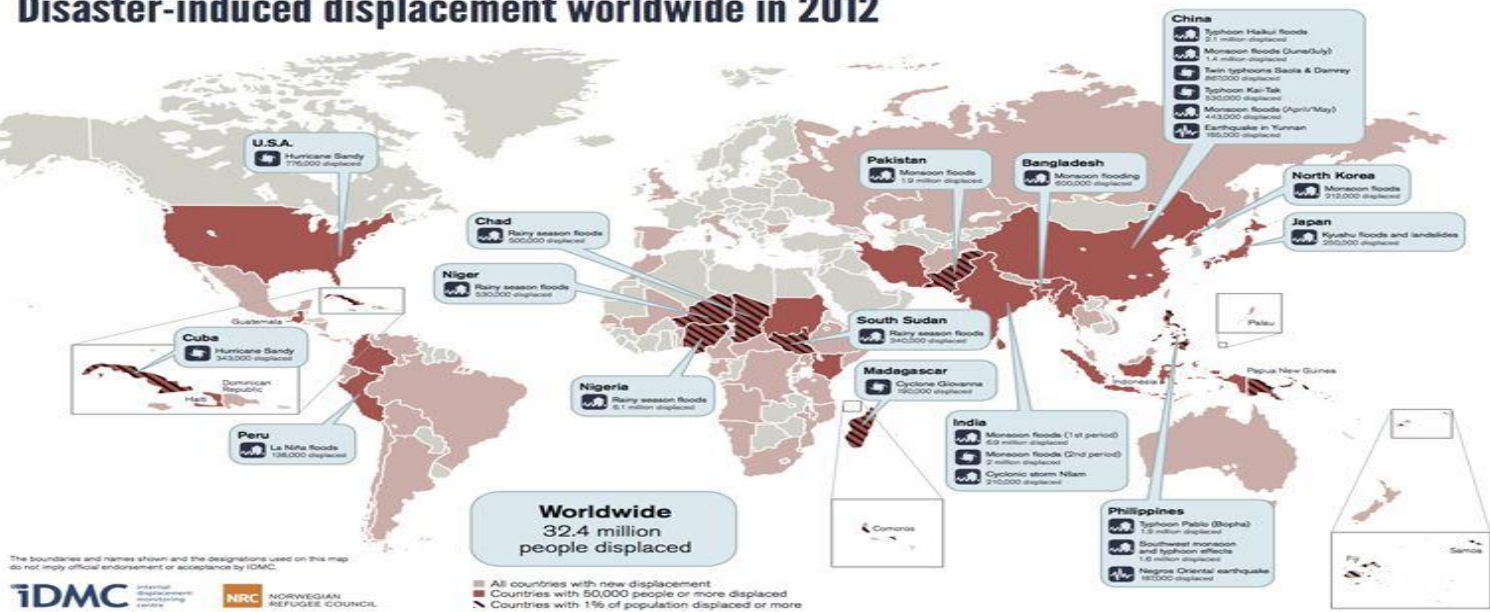
*IFRC perspective and responses to Natural  
Disasters and Population Displacement*

**May 2013**

# Disaster –induced displacement worldwide in 2012

- According to IDMC, during 2012, an estimated **32.4 million people** were displaced worldwide by disasters related to hazards such as floods, storms and earthquakes- almost double the number of people displaced in 2011

Disaster-induced displacement worldwide in 2012



## *Recent Natural hazards and disasters that resulted in forced migration impacts*

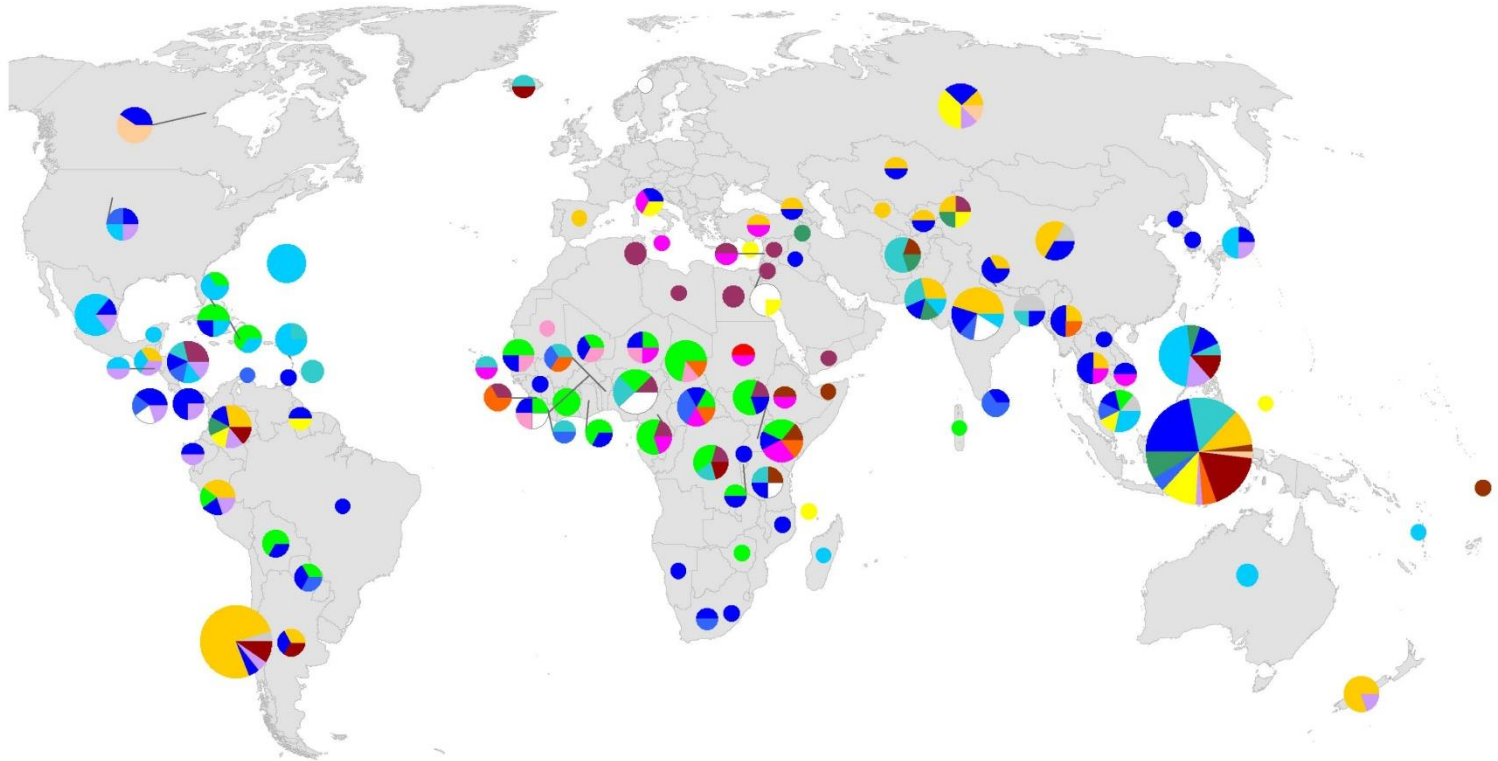
Although forced displacement does not necessarily accompany natural hazards and disasters, the **tendency for this to happen is increasing.**

Recent examples of crises resulting from extreme natural hazards that have had large-scale forced migration impacts include:

- **hurricanes and cyclones**
- **tsunamis**
- **flooding**
- **earthquakes**
- **prolonged droughts .**

NATURAL  
DISASTERS AND  
MOBILITY – DATA  
COLLECTION AND  
ANALYSIS

# RCRC response to disasters in the World in 2011



The maps used do not imply the expression of any opinion on the part of the International Federation of Red Cross and Red Crescent Societies or National Societies concerning the legal status of a territory or of its authorities. Data sources: DEVINFO, International Federation - Map created by DCMGVA (c) 2012

# *RCRC global response to disaster –induced displacement*



RCRC operations **respond to displaced populations** who are vulnerable or in need, providing some or all of the following:

- **material and social assistance** (safe water and basic sanitation; emergency medical care and basic health services; temporary shelter; distribution of food and other urgently needed items;
- **protection** against abuse, exploitation and the denial of rights;
- **advocacy** for the rights of refugees and internally displaced people (IDPs)

## *Some examples RCRC's responses..*

- Earthquake in **Japan** (2011): Tens of thousands of IDPs and stricken residents were given assistance;
- Flood in **Pakistan** (2010): launched emergency appeals to assist over 260,000 flood-affected families (some 1.8 million beneficiaries);
- **Philippines**: disaster-response and rehabilitation services provided, such as constructing cyclone-resistant shelters, ensuring houses are built on safe sites and taught communities better building techniques, prevention activities;
- **U.S.A.**(Hurricanes Katrina, Rita and Wilma): provided services to feed and shelter IDPs.

## ***RCRC response in Haiti***

In Haiti, the RCRC movement responded to the needs of people displaced after the earthquake (January 2010) :

- Basic **non-food items** and **emergency/transitional shelter** provided for 80,000 families;
- Emergency **health care** and **livelihood** support for vulnerable people;
- Basic needs for **water** and **sanitation**;
- People helped to get back in touch with their families and a specific **family links website** was launched;
- Given **practical information to help people to prepare** their homes and families: used SMS, radio and sound trucks to get life-saving information out to people.

# *The importance of Data collection*



According to the IDMC 2012\* report a **critical component to improving community resilience and government responses to disasters is better data collection** on people who have been displaced.

- **“Currently the information available is biased**, often only focusing on the most visible people who take shelter in official evacuation sites or camps”.... **“We need to know more about those who seek refuge with families and friends**, people who are repeatedly displaced by smaller disasters, or those who are stuck in prolonged displacement following a disaster– not just those that make headlines.” (Clare Spurrell, Chief Spokesperson for IDMC)

IDMC' (2012) *“Global Estimates 2012: People displaced by disaster”* report



# *IFRC Data collection & Information management*

Information management:

- **Saves lives through early warning**
- **Reduces suffering in the wake of disasters**, by providing tracing services, concise information on assistance packages, or clearly indicating where and when shelter will be provided
- **Promotes better media coverage** of the world's neglected disasters so that global assistance might be more equitably allocated



Information management in disasters relies on the extended network of the IFRC and field-based staff to build on and maximize the use of existing expertise, access, and experience.

# Disaster Management Information System (DMIS)

- The DMIS is a **web-based working tool** made accessible to RCRC staff;
- It is the result of a major effort made by the Federation in **addressing the complexity of information exchange in the humanitarian community** and to **support an efficient disaster preparedness and response** for the whole Federation's Red Cross and Crescent network at a global level.

International Federation of Red Cross and Red Crescent Societies

DMIS Disaster Management Information System

Gloria Pesarin | [My profile](#) | [Logout](#)

Home Preparedness **Disaster tracking** Response Toolbox About DMIS

**Disaster tracking**

**Latest field reports**

Date	Country	Disaster	Summary
21 May 13	<a href="#">United States</a>	Local storm	<a href="#">Oklahoma Tornado</a>
21 May 13	<a href="#">Somalia</a>	Civil unrest	<a href="#">Clan fighting in Jowhar Town....</a>
18 May 13	<a href="#">Panama</a>	Floods	<a href="#">Informe Preliminar</a>
18 May 13	<a href="#">Colombia</a>	Epidemic	<a href="#">Epidemia Dengue</a>
17 May 13	<a href="#">Sri Lanka</a>	Flash floods	<a href="#">Floods and Landslides Sri Lanka</a>
15 May 13	<a href="#">Myanmar</a>	Tropical cyclone	<a href="#">Tropical cyclone MAHASEN</a>
15 May 13	<a href="#">Zimbabwe</a>	Epidemic	<a href="#">Zimbabwe Malaria Outbreak</a>

[> view all field reports](#)

**Main ongoing natural hazards**

6 Storms, hurricanes and typhoons - [More](#)

Source: [Tropical Storm Risk](#)

**Disaster types**

- Geophysical**
- Hydrometeorologic**
  - Meteorological
  - Hydrological
  - Climatological
- Biological**
- Technological**
  - Industrial accident
  - Miscellaneous accident
  - Transport accident
- Human related**

# Disaster Management Information System (DMIS)

**+** **C** Please use the filter below to view the desired data

Disaster: Floods  
Precision: South Asia Floods  
Region: Asia and the Pacific  
Subregion: South Asia  
Country: Pakistan  
year: 2006  
Emergency Level:   
Date of first report: #Name?  
Date (Last updated):   
Number of NSs involved: 1

Administration document number:   
DMIS field reports:   
(If you add a report number, do not forget to put a space before!)  
Glide number:  First on DMIS:

Number of displaced/evacuated people:  Number of injured people:   
Number of beneficiaries:  Number of missing people:   
Number of affected people:  Local Staff:   
Number of dead people:  Volunteers:

Intervention  
Appeal: Emergency Appeal launched:   
ERU: Emergency Response Units deployed:   
RDRT: Regional Disaster Response Team mobilised:   
Type of RDRT:   
Del: Delegation involved in assessment/coordination:   
Others: Other key actors in the operation:   
FACT: Field Assessment and Coordination Team Deployed:   
DREF: Disaster Relief Emergency Fund used:

Comment:

region	subregion	country	disaster	year
Africa Americas Asia and the Pacific Europe Middle East and North Africa	Central Africa East Africa Southern Africa West Africa Caribbean	Afghanistan Albania Algeria American Samoa Andorra	Animal attack Meteorite Floods Storms Landslide	2004 2005 2006 2007 2008
all regions	all subregions	all countries	all disasters	all years

Record: 1 of 3422 Unfiltered Search

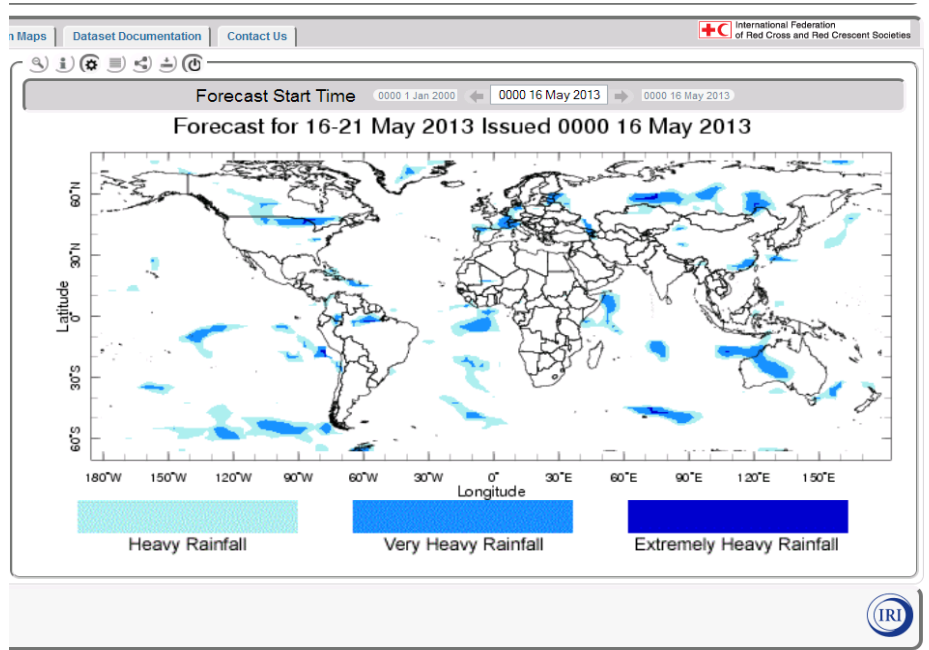
Filter List  
Remove Filter  
Delete Record  
remove the filter after deleting a record in order to continue working

Since 2004, DMIS is collecting data from DMIS field reports, Information bulletins, DREF operations, Emergency Appeals and updates in order to have a better picture of the Red Cross and Red Crescent responses to disaster.

DMIS users are able to access:

- real time information on disaster trends
- online internal and external resources

# IRI, CRED and IDMC partnerships



- **IRI** (International Research Institute for Climate and Society): They provide data on climate change, forecast, etc., They have access to IFRC data for validation.
- **CRED** (Centre for Research on the Epidemiology of Disasters): IFRC has access to their raw data, they have access to IFRC statistics to cross check their other sources.
- **IDMC** (Internal Displacement Monitoring Centre): exchange of data on displaced population.

**IDMC**



## *The IFRC's work on disaster law*



- Rules and procedures for international disaster response (“IDRL”) - since 2001
- Legislation for disaster risk reduction - since 2011
- Regulatory issues in post-disaster shelter - since 2011


# *Regulating international relief (IDRL)*



## **Introduction to the Guidelines**

for the domestic facilitation and regulation of international  
disaster relief and initial recovery assistance

[www.ifrc.org](http://www.ifrc.org)  
Saving lives, changing minds.

 International Federation  
of Red Cross and Red Crescent Societies

## **Research findings**

- Unnecessary restrictions, delays and costs
- Gaps in quality, coordination, complementarity

## **IDRL Guidelines**

- Adopted by states in 2007
- 12 countries have implemented aspects into national laws thus far
- Technical asst. projects in over 25 countries
- Model act recently completed

# Progress on IDRL in the region



## Association of Caribbean States

- 5<sup>th</sup> Summit – April 2013

## CDEMA

- Model legislation

## New laws or regulations

- Peru, Colombia, Mexico

## Ongoing technical assistance

- Haiti, Jamaica, Dominican Republic, Argentina, Ecuador



# *Regulatory barriers to shelter*



Shelter is critical to health, safety and recovery after disasters

Legal and procedural issues often stand in the way of emergency and transitional shelter solutions post natural disasters

## **Key issues**

- Ineffective procedures to temporarily requisition land
- Ambiguities in land title/rights
- Equity issues
- Land use planning and zoning
- Building codes



## *Progress on addressing regulatory barriers*



- Regional desk reviews in Asia and the Americas
  - incl. Haiti, El Salvador, Honduras, Peru, Cuba, Chile
- In-depth country studies
  - underway in Nepal, other countries to follow

### **Specific tools in development**

- Minimum elements for participatory land mapping
- Operational definition of security of tenure

---

## *Summit of the Heads of State and/or Government of the Association of Caribbean States (ACS), Haiti, 23 - 26 April 2013*

---

- Leaders agreed that “the best way to tackle [the region’s vulnerability to natural hazards] is by **incorporating comprehensive disaster risk management into all levels of public planning in our countries**, including steps for regional and international co-operation.”
- ACS heads of state and government also recognised the importance of **strong legal frameworks** to facilitate the timely and effective delivery of disaster relief. In this regard, they urged the ACS to conduct activities to strengthen disaster management coordination.
- As auxiliaries to ACS members the RCRC Movement will work closely with Governments to achieve these objectives.

NATURAL  
DISASTERS AND  
MOBILITY – DATA  
COLLECTION AND  
ANALYSIS

---

## *For more information on IFRC Migration work*

---

- IFRC Website: [www.ifrc.org/migration](http://www.ifrc.org/migration)
- Email: [migration.unit@ifrc.org](mailto:migration.unit@ifrc.org)

**FOR FURTHER INFORMATION ON IFRC MIGRATION  
WORK, PLEASE CONTACT:**

**IFRC MIGRATION UNIT**

**SUE LE MESURIER, MANAGER, MIGRATION UNIT**

**TEL. : +41 022 730 4369**

**EMAIL: [sue.lemesurier@ifrc.org](mailto:sue.lemesurier@ifrc.org)**

**THIS PRESENTATION IS PUBLISHED BY  
INTERNATIONAL FEDERATION OF  
RED CROSS AND RED CRESCENT SOCIETIES**

**P.O. BOX 372**

**CH-1211 GENEVA 19**

**SWITZERLAND**

**TEL.: +41 22 730 42 22**

**FAX.: +41 22 733 03 95**

**[www.ifrc.org](http://www.ifrc.org)**

**Saving lives, changing minds.**



**International Federation  
of Red Cross and Red Crescent Societies**