

Lebanon remains a country hosting the largest number of refugees per capita and per square kilometre in the world, with the Government's estimation of 1.5 million Syrian refugees and some 11,238 refugees of other nationalities<sup>1</sup>.

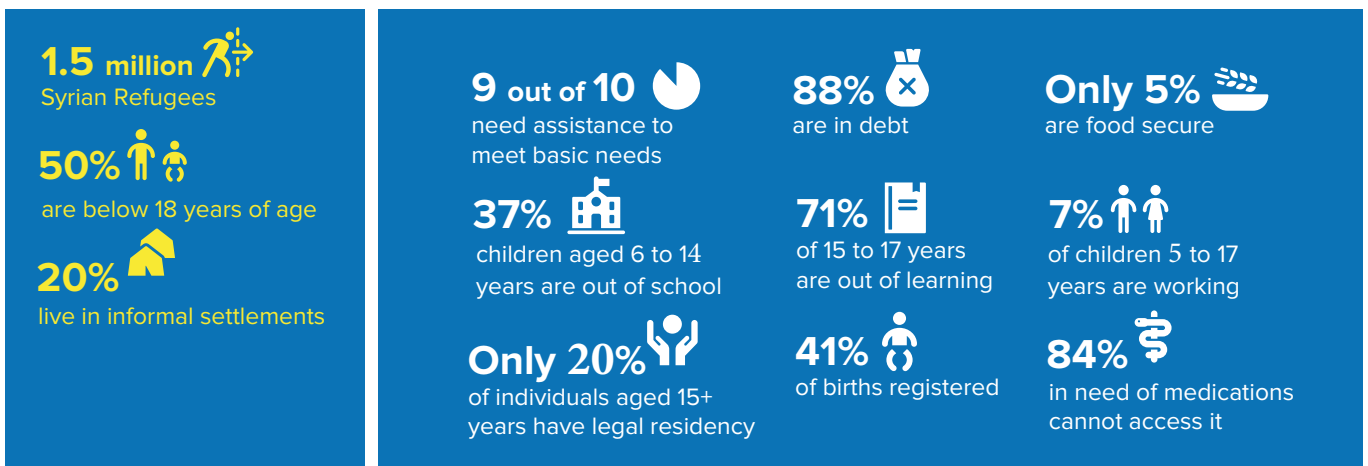
With the country facing its worst socio-economic crisis in decades and ongoing clashes in the south, vulnerable populations have been deeply affected by a sharp increase in poverty, gaps in critical supply chains and limitations on access to food, healthcare, education and other basic services. As a consequence, it is estimated that more than half of the Lebanese population is living below the poverty line, while a shocking 9 out of 10 Syrian refugees require humanitarian assistance to meet their basic needs\*.

The deep economic crisis in Lebanon has exacerbated the situation of both Lebanese and refugees. Like all communities in Lebanon, refugees are deeply affected by the compounded crises and critical situation affecting the country and are making difficult choices to survive every single day, including skipping meals, not seeking urgent medical treatment, and sending children to work instead of school. Since the beginning of the Gaza situation, ongoing clashes along the Blue Line across Lebanon's southern border have displaced over 86,600 people, including some Syrian refugees.

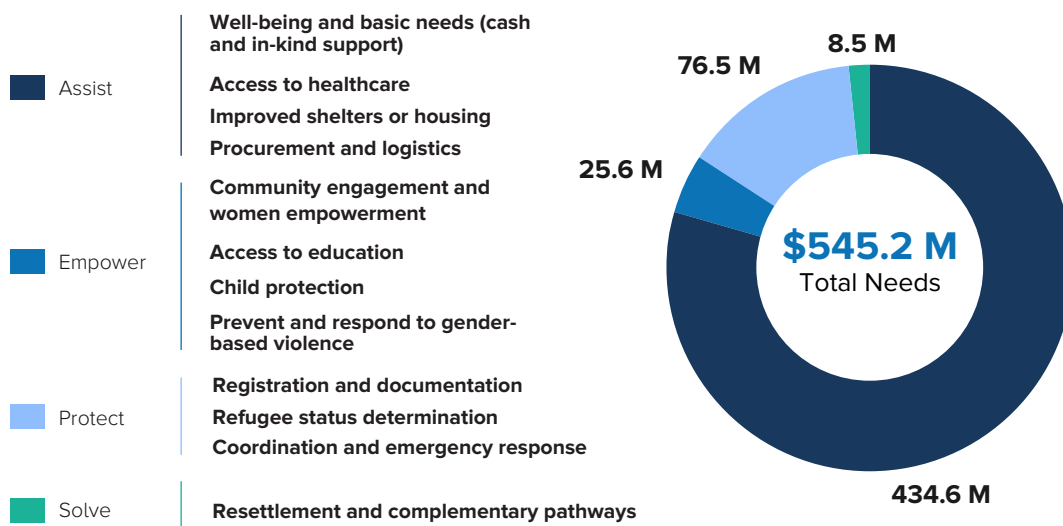
UNHCR works closely with the Government of Lebanon and numerous other national and international partners in providing protection and assistance to refugees and host communities, as well as stateless persons.



"A few months ago, all my children were sick, but I was only able to afford to buy medicine for one of them, the one who was the most sick". Majida, Syrian refugee, Bekaa Valley.



> BUDGET NEEDS FOR 2024



<sup>1</sup> As of December 2023.

\* Figures in this document are from the 2023 preliminary results of the Vulnerability Assessment of Syrian Refugees in Lebanon.