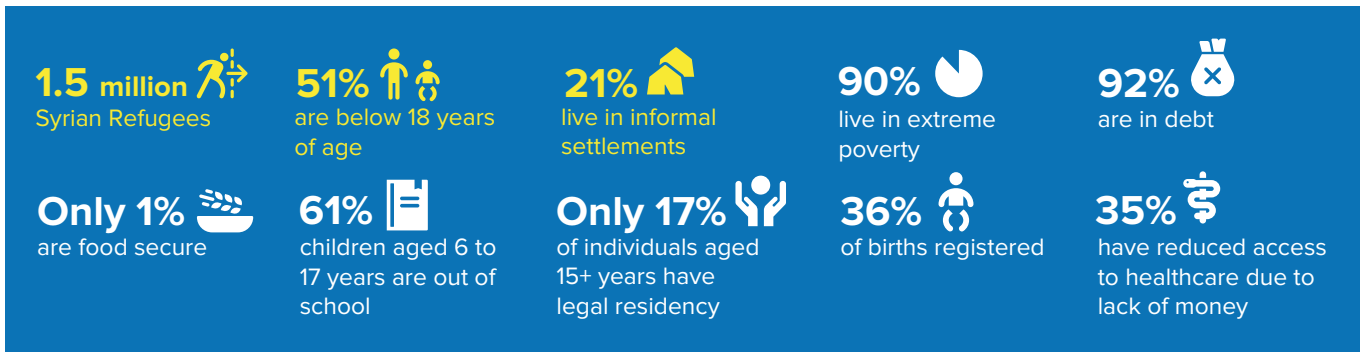


Lebanon remains the world's biggest refugee-hosting country per capita. The Government estimates that the country hosts 1.5 million Syrian refugees and some 12,300 refugees of other nationalities. The socio-economic downturn coupled with the COVID-19 pandemic have led to an exponential rise in extreme poverty and protection risks for Syrian refugees in Lebanon.

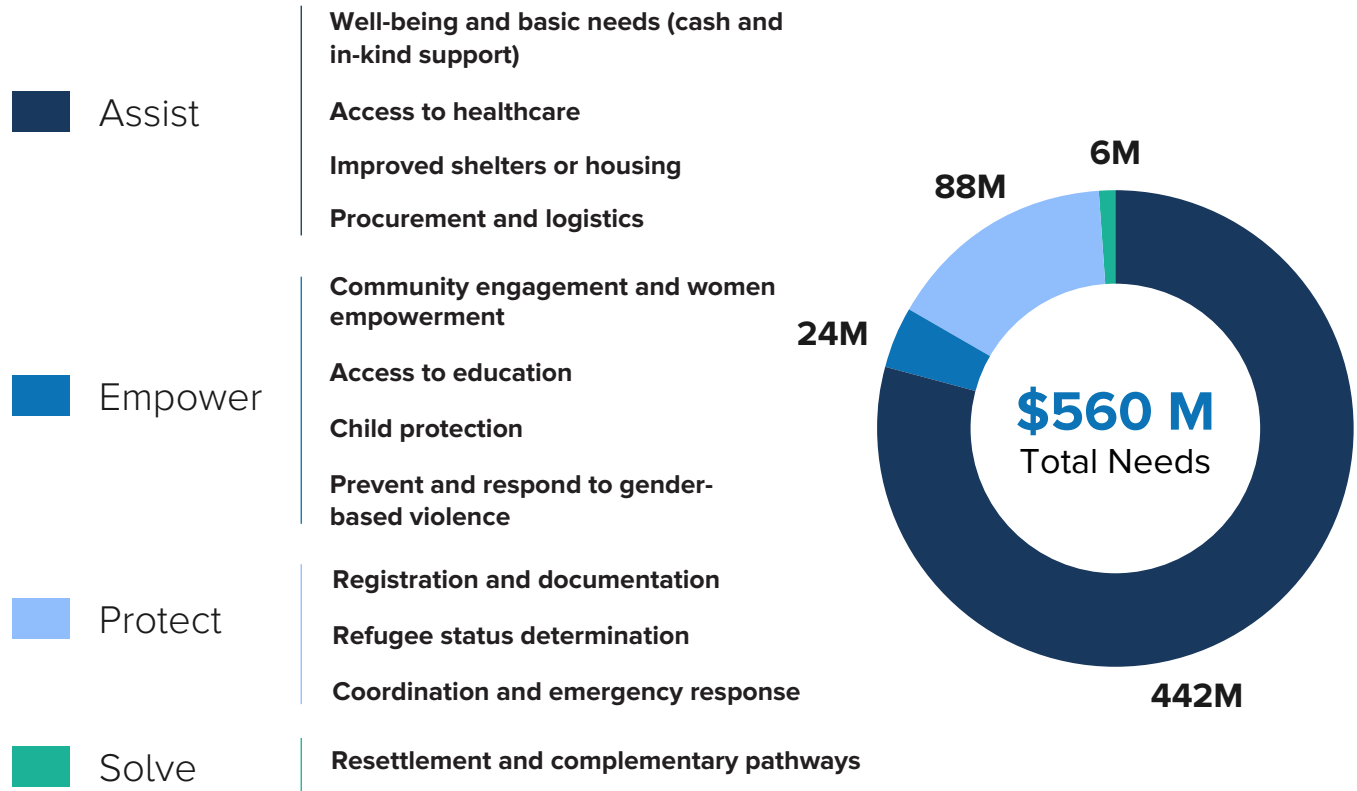
Almost 12 years into the Syria crisis and with refugee and host community populations deeply affected, every day is an emergency for Syrians forced to flee to neighboring countries, such as Lebanon. Increased solidarity is required to protect those who are most acutely affected. Syrian refugees need your help today, more than ever.

*"Sometimes it all feels like it's not real. The children are sick, and we have no medicine"*

Mohamad, Syrian refugee, Tripoli.



> BUDGET NEEDS FOR 2023 (USD)



1 Figures on this dashboard are based on the 2022 Vulnerability Assessment of Syrian Refugees in Lebanon, VASyR and the UNHCR Lebanon Protection Monitoring findings 2022, Q3