



UNHCR

United Nations High Commissioner for Refugees
Haut Commissariat des Nations Unies pour les réfugiés

TRENDS IN REFUGEE STATUS DETERMINATION 1 JANUARY – 30 JUNE 2004

**ASYLUM APPLICATIONS, REFUGEE STATUS DETERMINATION
AND PENDING CASES IN 81, MOSTLY DEVELOPING, COUNTRIES**

20 SEPTEMBER 2004

**POPULATION DATA UNIT
POPULATION AND GEOGRAPHIC DATA SECTION
UNITED NATIONS HIGH COMMISSIONER FOR REFUGEES
GENEVA**

ALSO AVAILABLE AT: [HTTP://WWW.UNHCR.ORG/STATISTICS](http://www.unhcr.org/statistics)
CONTACT: [HQCS00@UNHCR.ORG](mailto:HQCS00@unhcr.org)

INTRODUCTION

1. In many non-industrialized countries, UNHCR cooperates closely with governments in the process of individual refugee status determination. This report analyses refugee status determination data in 81 asylum countries for which statistics were available as per beginning of September for the period 1 January to 30 June 2004. Trends in the size of the refugee population, new refugee arrivals, voluntary repatriation and resettlement departures in these 81 asylum countries are analyzed separately in the document *Global Refugee Trends, 1 January – 30 June 2004*.

2. The 81 countries covered by this document are mostly developing countries where UNHCR provides operational support to host Governments.¹ The main purpose of this report is to provide updated statistics for *individual* countries and operations.²

3. The statistics provided here should be considered as provisional, subject to change. The country codes used in the tables are explained in Annex I. The data provided in the tables generally refer to first instance procedures only. In the case of Albania, Angola, Bosnia and Herzegovina, China, Cyprus, Egypt, India, Saudi Arabia, Turkmenistan, Tunisia and United Arab Emirates, the data on first instance and appeal/review have been combined.

Applications and decisions

4. From 1 January to 30 June 2004, some 29,900 applications for asylum or refugee status were recorded in the 81 asylum countries covered by this report. Out of the 30,300 refugee status determination decisions taken during the first six months of 2004, 8,500 were positive (recognized), whereas 10,200 applications were rejected on substantive grounds. The refugee recognition rate in these countries for all nationalities combined during the first six months of 2004 stood at 45 per cent. Some 10,000 claims were closed for other, non-substantive reasons, whereas 1,800 persons were allowed to remain for humanitarian reasons (see *Table 1*).

5. During the first six months of 2004, the number of applications for asylum or refugee status among the 81 countries exceeded 1,000 in 8 countries namely Ecuador (5,058), Egypt (3,973), Cyprus (3,500), Ethiopia (2,148), Guinea (2,078), Pakistan (1,695), Burundi (1,677), and Uganda (1,009) (see *Table 1*).

6. In five of the 81 countries, the number of refugee status determination decisions taken during the first six months of 2004 was 1,000 or higher, namely in Pakistan (5,280), Ecuador (5,276), Egypt (5,233), Ethiopia (2,152), and Cyprus (1,829) (see *Table 1*).

Pending cases ("backlog")

7. The number of pending cases or backlog is a key indicator for the efficiency in deciding refugee claims as well as for the workload of the office responsible for the adjudication process. If the backlog of undecided cases has increased during the period, the number of new applications lodged exceeded the number of decisions. Conversely, a decrease in the number of pending cases shows that more cases have been decided than

¹ For an overview of asylum trends in industrialized countries, see: <http://www.unhcr.org/statistics>, *Asylum Trends*.

² For a comprehensive overview of global and regional trends in asylum and refugee status determination, see <http://www.unhcr.org/statistics>, *2003 Global Refugee Trends*.

submitted. In the 81 countries with available data, the backlog remained unchanged during the first six months of 2004 (77,000 cases).

8. By the end of June 2004, there were 19 countries where the number of undecided applications for refugee status was more than 1,000. The highest number of pending cases was found in Burundi (12,100), Azerbaijan (9,300), Cyprus (6,800) Gabon (4,900), Guinea (4,300), and Egypt (4,100) (see *Table 1*).

9. At the end of June 2004, there were 25 countries with 500 or more decisions pending. Among these 25 countries, the number of undecided cases during the reporting period increased by 10 per cent or more in Guinea (70%), Uganda (51%), Cote d'Ivoire (39%), Cyprus (33%), Burundi (14%) and Benin (10%). Significant reductions in the backlog of undecided cases during the first six months of 2004 were achieved in Pakistan (-67%), Yemen (-39%), Uzbekistan (-26%), Egypt (-23%), Macedonia (-21%), and Argentina (-13%) (see *Table 1 and Chart 1*).

10. In the 81 asylum countries which reported statistics, Colombian asylum-seekers submitted the largest number asylum claims (5,200), followed by nationals from Sudan (4,600), the Democratic Republic of the Congo (2,900), Afghanistan (1,900), Bangladesh (1,500), Eritrea (1,500), Liberia (1,300), and Sierra Leone (1,200) (see *Table 2*).

11. Among the 16 nationalities with more than 1,000 undecided claims at the end of June 2004, the number of pending cases during the period increased for asylum-seekers from Pakistan (87%), Bangladesh (67%), Sierra Leone (36%), Liberia (34%). Nationalities which recorded an important decrease in undecided cases included asylum-seekers from Afghanistan (-53%), Somalia (-26%), Serbia and Montenegro (-21%) and Sudan (-13%) (see *Table 2 and Chart 2*).

Chart 1. Change in pending cases 1 Jan. - 30 June 2004

Countries of asylum with 500 or more pending cases as per 30 June 2004

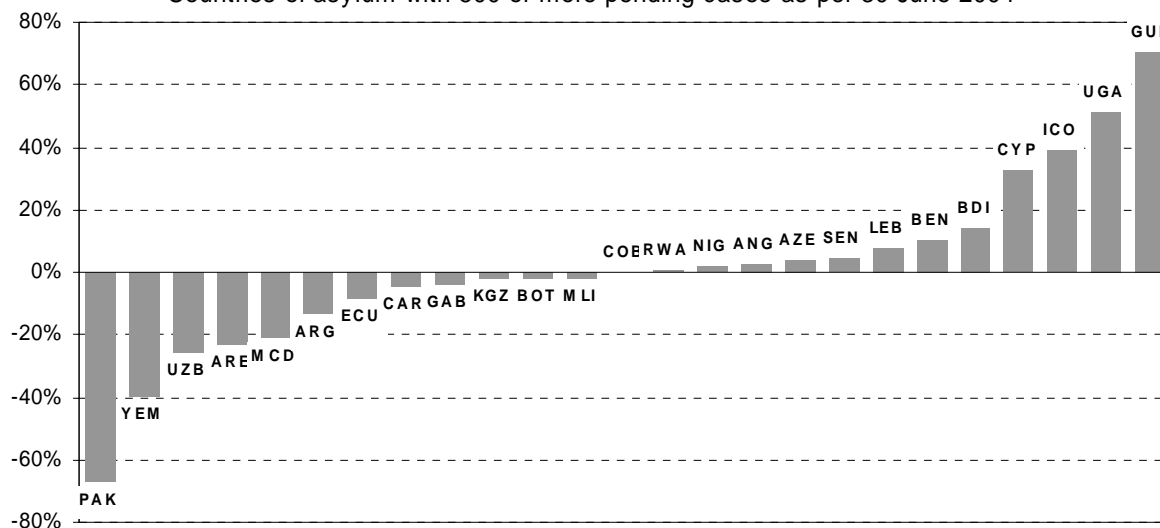
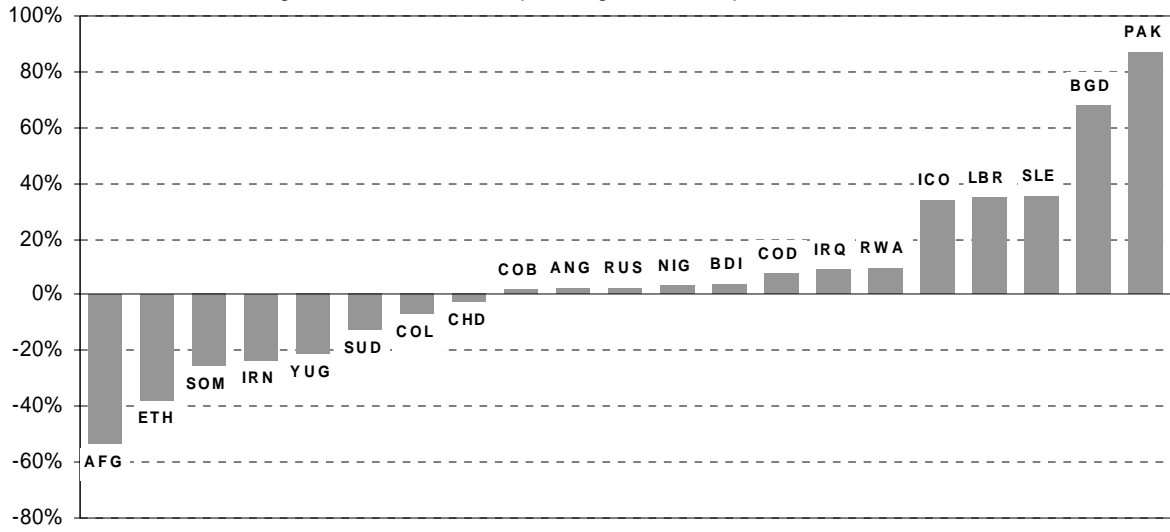


Chart 2. Change in pending cases 1 Jan. - 30 June 2004

Origin with 500 or more pending cases as per 30 June. 2004



TRENDS IN REFUGEE STATUS DETERMINATION, 1 JANUARY – 30 JUNE 2004
UNHCR GENEVA, 20 SEPTEMBER 2004

Table 1. Applications, refugee status determination and pending cases by country of asylum

Coverage: 81 asylum countries for which statistics were available at begin September 2004

Data are provisional and subject to change.

(Code) Country of asylum	Pending begin year		Applied since 1 Jan.	Decisions since 1 January					Pending end- quarter		Protection indicators		
	Total	UNHCR assisted		Recog- nized	Other	Rejected	Otherw. closed	Total	Total	UNHCR assisted	Recognition rates (excl. o/w. cl.)		% change pend. cases
											Ref. status	Total	
ALB	93	75	7	14	-	-	9	23	77	77	100%	100%	-17%
ALG	2	-	7	-	-	4	2	6	3	-	0%	0%	50%
ANG	1,006	-	61	40	-	37	-	37	1,030	-	52%	52%	2%
ARE	5,409	-	3,973	3,037	-	736	1,460	5,233	4,149	-	80%	80%	-23%
ARG	1,211	742	131	95	8	162	33	298	1,052	293	37%	39%	-13%
ARM	36	-	73	-	44	13	27	76	25	-	0%	77%	-31%
AZE	8,989	8,989	476	134	-	12	6	152	9,313	9,313	92%	92%	4%
BDI	10,572	6,973	1,677	184	-	-	-	184	12,065	7,939	100%	100%	14%
BEN	730	-	317	50	-	129	64	243	804	-	28%	28%	10%
BGD	8	-	7	1	-	1	-	2	13	-	50%	50%	63%
BKF	499	-	36	13	-	37	1	51	484	-	26%	26%	-3%
BLR	327	-	97	14	-	15	15	44	378	-	48%	48%	16%
BOL	1	1	15	-	-	-	6	6	10	10	900%
BOT	1,079	1,079	15	34	-	-	-	34	1,060	1,060	100%	100%	-2%
BRA	583	583	199	44	-	119	141	304	478	478	27%	27%	-18%
BSN	701	701	91	32	-	231	58	321	471	471	12%	12%	-33%
BZE	14	14	29	1	-	6	7	14	23	23	14%	14%	64%
CAM	46	16	109	88	-	11	21	120	35	17	89%	89%	-24%
CAR	3,397	2,236	88	182	29	27	-	238	3,247	-	87%	89%	-4%
CHI	43	3	131	36	1	24	38	99	75	2	60%	61%	74%
CHL	49	19	132	49	-	55	2	106	75	19	47%	47%	53%
COB	3,224	-	244	31	-	204	4	239	3,229	-	13%	13%	0%
COL	13	18	20	10	-	-	1	6	22	13	100%	100%	69%
CUB	6	3	6	6	-	2	2	10	2	-	75%	75%	-67%
CYP	5,082	-	3,500	41	12	1,009	769	1,829	6,750	33	4%	5%	33%
ECU	2,565	2,565	5,058	1,023	-	2,346	1,907	5,276	2,349	2,349	30%	30%	-8%
ETH	10	10	2,148	1,241	906	4	1	2,152	6	6	100%	100%	-40%
GAB	5,118	5,118	108	11	-	295	-	306	4,920	4,920	4%	4%	-4%
GNB	83	83	40	15	-	-	-	15	108	108	100%	100%	30%
GUA	2	-	9	-	-	-	-	-	11	-	450%
GUI	2,544	-	2,078	270	-	23	-	293	4,329	-	92%	92%	70%
HON	-	-	71	1	-	15	35	51	20	-	6%	6%	..
HRV	4	5	55	-	-	49	3	52	7	7	0%	0%	75%
HUN	290	-	745	71	138	398	200	807	228	257	15%	34%	-21%
ICO	1,321	1,321	660	39	-	107	-	146	1,835	1,835	27%	27%	39%
IND	377	377	414	230	-	280	78	588	203	203	45%	45%	-46%
INS	68	68	46	15	-	135	25	171	177	177	10%	10%	160%
IRN	1	-	-	-	-	-	1	1	-	-	-100%
KGZ	642	585	69	4	13	23	41	81	630	573	15%	43%	-2%
KOR	139	136	61	-	-	1	7	8	192	192	0%	0%	38%
KUW	186	186	10	-	-	1	-	1	195	191	0%	0%	5%
LBY	58	-	429	144	-	36	37	217	269	-	80%	80%	364%
LEB	543	-	137	9	-	47	39	95	585	-	16%	16%	8%
LKA	6	6	83	12	-	13	7	32	57	57	48%	48%	850%
LTU	85	85	40	-	57	7	18	83	39	39	0%	89%	-54%
LVA	-	-	4	-	-	4	-	4	-	-	0%	0%	..
MAU	55	55	78	33	-	-	-	33	100	-	100%	100%	82%
MCD	2,285	2,285	38	5	453	-	60	518	1,805	1,805	100%	100%	-21%
MEX	82	-	184	19	-	66	42	127	139	-	22%	22%	70%

TRENDS IN REFUGEE STATUS DETERMINATION, 1 JANUARY – 30 JUNE 2004
UNHCR GENEVA, 20 SEPTEMBER 2004

Table 1 (continued)

(Code) Country of asylum	Pending begin year		Applied since 1 Jan.	Decisions since 1 January					Pending end- quarter		Protection indicators		
	Total	UNHCR assisted		Recog- nized	Other	Rejected	Otherw. closed	Total	Total	UNHCR assisted	Recognition rates (excl. o/w. cl.)		% change pend. cases
											Ref. status	Total	
MLI	712	712	204	216	-	3	-	216	700	703	99%	99%	-2%
MOR	177	-	30	6	-	-	106	112	95	9	100%	100%	-46%
NEP	237	16	157	-	85	2	50	137	257	11	0%	98%	8%
NGR	13	-	15	3	-	4	9	16	12	-	43%	43%	-8%
NIC	17	11	13	9	-	2	3	14	17	13	82%	82%	0%
NIG	1,124	1,124	65	47	-	-	-	47	1,142	1,142	100%	100%	2%
PAK	5,356	5,356	1,695	83	-	2,312	2,885	5,280	1,771	2,106	3%	3%	-67%
PAR	4	4	11	2	-	-	-	2	13	13	100%	100%	225%
PHI	38	-	2	1	-	-	-	1	39	-	100%	100%	3%
PNG	305	2	1	-	-	-	-	-	306	3	0%
ROM	319	1,280	347	31	6	204	42	283	383	357	13%	15%	20%
RUS	272	272	433	22	-	419	-	441	264	264	5%	5%	-3%
RWA	3,015	3,015	19	-	-	-	-	-	3,034	3,034	1%
SAL	-	-	2	-	-	1	1	2	-	-	0%	0%	..
SAU	158	-	119	5	17	38	11	71	206	-	12%	37%	30%
SEN	2,265	2,265	247	50	-	95	-	145	2,367	2,367	34%	34%	5%
SIN	2	2	2	1	-	1	-	1	3	2	50%	50%	50%
SLE	139	1	3	-	1	-	-	1	141	129	..	100%	1%
SVN	170	170	620	13	16	176	460	665	197	197	7%	14%	16%
TAN	163	163	-	-	-	-	-	-	163	163	0%
TKM	4	4	10	5	5	5	-	10	4	4	50%	67%	0%
TMP	8	7	2	-	-	-	-	-	10	9	25%
TOG	8	-	137	28	-	-	1	29	116	-	100%	100%	1350%
TUN	7	4	45	-	-	1	40	41	11	2	0%	0%	57%
UAE	63	-	39	21	-	13	19	53	49	-	62%	62%	-22%
UGA	726	-	1,009	532	-	-	104	636	1,099	-	100%	100%	51%
URU	9	-	2	6	-	-	-	6	5	5	100%	100%	-44%
UZB	1,187	1,187	84	48	-	112	340	394	883	883	30%	30%	-26%
YEM	1,066	1,066	544	118	14	133	699	964	646	646	47%	50%	-39%
YUG	32	32	24	5	-	14	15	34	22	22	26%	26%	-31%
Total	77,180	51,030	29,887	8,530	1,805	10,219	9,952	30,333	77,029	44,551	45%	50%	0%

TRENDS IN REFUGEE STATUS DETERMINATION, 1 JANUARY – 30 JUNE 2004
UNHCR GENEVA, 20 SEPTEMBER 2004

Table 2. Applications, refugee status determination and pending cases by origin

Coverage: 81 asylum countries for which statistics were available at begin September 2004

Figures between 1 and 4 have been replaced by an asterisk.

Data are provisional and subject to change.

(Code) Origin	Pending begin year		Applied since 1 Jan.	Decisions since 1 January					Pending end-quarter		Protection indicators		
	Total	UNHCR assisted		Recognized	Other	Rejected	Otherw. closed	Total	Total	UNHCR assisted	Recognition rates (excl. o/w. cl.)		% change pend. cases
											Ref. status	Total	
AFG	7,288	6,997	1,879	249	48	2,477	3,233	5,925	3,415	3,457	9%	11%	-53%
ALB	16	14	107	*	-	21	81	103	22	19	5%	5%	38%
ALG	93	53	56	*	-	20	70	91	59	33	5%	5%	-37%
ANG	597	570	49	8	-	27	-	35	611	578	23%	23%	2%
ARE	70	35	24	*	-	22	26	49	45	13	4%	4%	-36%
ARG	*	*	*	-	-	*	-	*	*	*	0%	0%	33%
ARM	110	40	22	13	-	8	-	21	111	12	62%	62%	1%
AZE	32	8	21	6	5	6	-	12	41	9	50%	65%	28%
BDI	1,138	1,076	121	48	*	24	5	80	1,179	1,060	67%	68%	4%
BEL	*	-	-	-	-	-	-	-	*	*	0%
BEN	15	*	*	-	-	*	-	*	16	*	0%	0%	7%
BGD	2,128	43	1,464	*	-	13	13	28	3,564	44	13%	13%	67%
BHU	206	-	23	-	85	*	40	126	103	-	0%	99%	-50%
BKF	7	*	*	-	-	-	-	-	10	*	43%
BLR	8	*	6	*	*	-	*	*	11	*	100%	100%	38%
BOL	*	-	*	-	-	-	-	-	5	*	67%
BRA	*	*	-	-	-	-	-	-	*	*	0%
BSN	21	11	31	*	*	19	18	40	25	17	10%	14%	19%
BUL	10	*	10	-	-	*	*	*	18	6	0%	0%	80%
BZE	*	-	-	-	-	*	-	*	-	-	0%	0%	-100%
CAM	6	6	-	-	-	*	-	*	6	6	0%	0%	0%
CAR	331	222	86	6	-	20	5	31	386	285	23%	23%	17%
CHD	1,471	1,041	38	17	-	51	10	78	1,431	1,019	25%	25%	-3%
CHI	141	187	132	6	-	65	18	85	187	90	8%	8%	33%
CHL	6	6	*	-	-	-	-	-	7	-	17%
CMR	157	119	32	48	-	11	8	67	120	82	81%	81%	-24%
COB	3,406	2,989	286	45	*	165	19	230	3,462	3,044	21%	22%	2%
COD	20,705	12,790	2,898	763	23	422	87	1,279	22,324	12,277	64%	65%	8%
COI	*	-	-	-	-	-	-	-	*	-	0%
COL	2,672	2,628	5,202	1,068	-	2,399	1,927	5,394	2,480	2,377	31%	31%	-7%
COS	*	-	-	-	-	-	*	*	-	-	-100%
CUB	172	121	120	32	-	45	29	101	186	74	42%	42%	8%
CZE	-	-	*	-	-	*	-	*	-	-	0%	0%	..
DJB	10	-	10	-	-	-	10	10	10	-	0%
DOM	10	*	*	-	-	-	*	*	12	*	20%
ECU	*	*	5	-	-	-	-	-	9	7	125%
EGU	46	42	13	-	-	*	-	*	58	51	0%	0%	26%
ERT	290	18	1,454	1,314	-	34	77	1,425	319	16	97%	97%	10%
EST	7	6	-	-	-	-	*	*	5	*	-29%
ETH	1,174	529	624	227	-	212	627	1,066	732	92	52%	52%	-38%
FRA	*	-	-	-	-	-	-	-	*	-	0%
GAB	*	-	-	-	-	-	-	-	*	-	0%
GAM	37	37	18	*	-	-	-	*	54	52	100%	100%	46%
GAZ	616	271	199	34	20	100	190	343	472	213	25%	35%	-23%
GEO	232	25	290	11	8	95	100	212	321	52	10%	17%	38%
GHA	67	53	19	*	-	10	-	11	76	62	9%	9%	13%

TRENDS IN REFUGEE STATUS DETERMINATION, 1 JANUARY – 30 JUNE 2004
UNHCR GENEVA, 20 SEPTEMBER 2004

Table 2 (continued)

(Code) Origin	Pending begin year		Applied since 1 Jan.	Decisions since 1 January					Pending end-quarter		Protection indicators		
	Total	UNHCR assisted		Recognized	Other	Rejected	Other. closed	Total	Total	UNHCR assisted	Recognition rates (excl. o/w. cl.)		% change pend. cases
											Ref. status	Total	
GNB	135	131	*	-	-	9	*	10	128	127	0%	0%	-5%
GRE	*	*	-	-	-	-	-	-	*	*	0%
GUA	15	*	8	*	-	7	6	15	8	-	22%	22%	-47%
GUI	168	96	54	12	-	12	10	34	188	96	50%	50%	12%
GUY	*	*	-	-	-	-	-	-	*	*	0%
HAI	51	38	44	6	-	5	13	24	69	51	55%	55%	35%
HON	9	-	28	*	-	7	8	19	18	-	36%	36%	100%
HRV	*	-	*	*	-	-	*	*	*	*	100%	100%	0%
ICO	1,477	218	896	315	*	48	35	391	1,982	262	87%	87%	34%
IND	76	182	231	*	-	65	23	90	218	68	3%	3%	187%
INS	307	7	*	-	-	-	-	-	309	7	1%
IRN	1,122	366	402	45	6	434	240	723	863	321	9%	11%	-23%
IRQ	1,600	1,054	507	34	78	70	181	362	1,745	845	33%	62%	9%
ISR	*	*	*	-	-	*	-	*	5	*	0%	0%	67%
ITA	-	*	-	-	-	-	-	-	-	-
JOR	24	15	15	*	-	7	6	13	26	6	22%	22%	8%
KAZ	25	9	16	5	-	9	-	14	27	5	36%	36%	8%
KEN	20	18	*	*	-	*	*	5	17	12	0%	0%	-15%
KGZ	21	12	*	*	-	9	9	16	8	*	25%	25%	-62%
KRN	-	-	-	-	-	-	-	-	-	-
KUW	-	*	*	-	-	-	-	-	*	*
LAO	*	*	-	-	-	*	-	*	-	-	0%	0%	-100%
LBR	2,623	1,528	1,330	312	19	56	47	426	3,525	1,694	85%	86%	34%
LBY	9	5	*	-	-	*	*	*	6	*	0%	0%	-33%
LEB	70	9	36	5	-	20	19	43	63	*	20%	20%	-10%
LKA	109	84	125	-	-	14	26	40	194	69	0%	0%	78%
LTU	*	*	*	-	-	*	-	*	*	-	0%	0%	-50%
LVA	-	-	*	-	-	-	-	-	*	*
MAD	*	-	*	-	-	-	-	-	*	-	50%
MAU	286	247	23	11	-	50	*	64	245	210	18%	18%	-14%
MCD	144	141	26	-	*	78	27	108	74	74	0%	4%	-49%
MDA	55	21	50	-	-	13	23	36	72	20	0%	0%	31%
MDV	*	*	*	*	-	-	*	*	*	*	100%	100%	0%
MLI	6	*	12	*	-	8	-	9	9	7	11%	11%	50%
MLW	*	*	*	-	-	-	*	*	*	*	33%
MNG	*	-	*	-	-	-	-	-	7	*	133%
MOR	7	5	7	*	-	*	5	10	*	*	80%	80%	-57%
MOZ	*	*	*	-	-	*	-	*	*	*	0%	0%	-25%
MYA	297	282	312	179	-	198	46	423	186	162	47%	47%	-37%
NAM	166	166	-	5	-	-	-	5	161	161	100%	100%	-3%
NEP	*	-	11	-	-	-	-	-	12	*	1100%
NGR	22	12	6	-	-	10	*	11	17	10	0%	0%	-23%
NIC	*	-	*	-	-	*	*	5	-	-	0%	0%	-100%
NIG	798	690	378	15	-	263	66	344	826	698	5%	5%	4%
NRU	*	-	-	-	-	-	-	-	-	-	0%
OMN	*	-	-	-	-	-	-	-	-	-	0%

TRENDS IN REFUGEE STATUS DETERMINATION, 1 JANUARY – 30 JUNE 2004
UNHCR GENEVA, 20 SEPTEMBER 2004

Table 2 (continued)

(Code) Origin	Pending begin year		Applied since 1 Jan.	Decisions since 1 January					Pending end-quarter		Protection indicators		
	Total	UNHCR assisted		Recognized	Other	Rejected	Otherw. closed	Total	Total	UNHCR assisted	Recognition rates (excl. o/w. cl.)		% change pend. cases
											Ref. status	Total	
GNB	135	131	*	-	-	9	*	10	128	127	0%	0%	-5%
PAK	583	74	878	45	-	170	154	369	1,092	115	21%	21%	87%
PAR	*	-	-	-	-	-	-	-	*	-	0%
PER	564	306	103	16	5	134	19	174	498	144	11%	14%	-12%
PHI	-	-	*	-	-	-	-	-	*	-
POL	*	-	*	-	-	*	*	*	-	-	0%	0%	-100%
POR	*	-	-	-	-	-	-	-	*	-	0%
ROM	180	166	15	-	-	17	124	141	56	37	0%	0%	-69%
RSA	*	*	7	-	-	*	-	*	9	9	0%	0%	200%
RUS	8,645	8,350	619	96	54	143	85	378	8,887	8,622	40%	51%	3%
RWA	668	397	141	54	*	25	*	76	733	369	68%	69%	10%
SAL	*	-	27	*	-	*	*	7	21	-	75%	75%	2000%
SAU	9	*	-	*	-	-	*	*	6	*	100%	100%	-33%
SEN	97	82	18	9	-	16	*	28	87	44	36%	36%	-10%
SLE	2,575	1,254	1,203	112	*	153	19	287	3,490	1,461	42%	43%	36%
SOM	2,428	507	537	593	*	86	479	1,162	1,803	452	87%	87%	-26%
SRV	56	23	107	83	-	12	18	113	50	27	87%	87%	-11%
STA	31	22	13	*	*	12	7	24	17	15	25%	29%	-45%
SUD	3,592	841	4,576	2,444	905	673	1,018	5,040	3,128	84	78%	83%	-13%
SUR	*	-	-	-	-	-	-	-	*	-	0%
SWA	*	*	*	*	-	-	-	*	*	*	100%	100%	0%
SYR	187	97	180	44	*	52	32	121	243	76	46%	46%	30%
TAN	133	128	32	*	-	73	*	75	90	82	1%	1%	-32%
THA	-	-	*	-	-	-	*	*	-	-
TJK	36	18	12	-	-	7	9	16	38	12	0%	0%	6%
TKM	*	*	12	-	-	6	*	*	14	12	0%	0%	367%
TOG	315	100	79	25	-	30	7	62	331	107	45%	45%	5%
TUN	32	25	5	*	-	*	6	8	29	23	50%	50%	-9%
TUR	345	63	348	13	*	246	218	480	212	74	5%	6%	-39%
UGA	97	83	9	*	-	*	-	*	103	87	75%	75%	6%
UKR	127	23	201	*	6	41	20	65	265	10	5%	16%	109%
URU	-	-	*	-	-	-	-	-	*	*
USA	*	-	-	-	-	-	-	-	*	-	0%
UZB	12	8	30	5	-	20	-	25	17	8	20%	20%	42%
VAR	315	102	568	42	49	335	108	534	349	243	11%	21%	11%
VEN	13	7	8	*	-	*	5	9	12	5	50%	50%	-8%
WSA	-	-	*	*	-	-	-	*	-	-	100%	100%	..
WSH	-	-	-	-	-	-	-	-	-	-
YEM	12	6	*	-	-	*	*	5	9	5	0%	0%	-25%
YUG	3,040	2,949	322	58	468	269	201	996	2,388	2,329	18%	66%	-21%
ZAM	*	*	*	-	-	-	-	-	*	*	50%
ZIM	84	72	21	*	-	*	*	5	103	87	25%	25%	23%
Total	77,180	51,030	29,887	8,530	1,805	10,219	9,952	30,333	77,029	44,551	45%	50%	0%

TRENDS IN REFUGEE STATUS DETERMINATION, 1 JANUARY – 30 JUNE 2004
UNHCR GENEVA, 20 SEPTEMBER 2004

Table 3. Applications, refugee status determination and pending cases by origin and country of asylum

Coverage: 81 asylum countries for which statistics were available at begin September 2004

Only including nationalities in countries, with 50 or more applications during the first six months of 2004.

Figures between 1 and 4 have been replaced by an asterisk.

Data are provisional and subject to change.

Origin	Country of asylum	Pending begin year		Applied since 1 Jan.	Decisions since 1 January					Pending end-quarter		Protection indicators		
		Total	UNHCR assisted		Recognized	Other	Rejected	Otherw. closed	Total	Total	UNHCR assisted	Recognition rates (excl. o/w. cl.)		% change pend. cases
												Ref. status	Total	
AFG	PAK	4,412	4,412	1,270	78	-	1,934	2,828	4,840	842	1,187	4%	4%	-81%
AFG	RUS	234	234	322	18	-	301	-	319	237	237	6%	6%	1%
AFG	UZB	1,146	1,146	59	45	-	82	321	366	839	839	35%	35%	-27%
ALB	SVN	*	*	104	-	-	18	77	95	15	15	0%	0%	275%
BDI	UGA	47	-	68	16	-	-	-	16	99	-	100%	100%	111%
BGD	CYP	2,086	-	1,443	-	-	7	10	17	3,512	-	0%	0%	68%
CAR	ICO	156	156	63	-	-	*	-	*	216	216	0%	0%	38%
CHI	ROM	66	146	56	-	-	50	14	64	58	23	0%	0%	-12%
COB	ICO	622	622	134	11	-	6	-	17	739	739	65%	65%	19%
COD	BDI	10,532	6,973	1,672	184	-	-	-	184	12,020	7,939	100%	100%	14%
COD	BEN	183	-	70	11	-	14	9	34	219	-	44%	44%	20%
COD	COB	2,801	-	222	27	-	195	*	224	2,799	-	12%	12%	0%
COD	ICO	204	204	116	23	-	12	-	35	285	285	66%	66%	40%
COD	TOG	*	-	67	11	-	-	-	11	57	-	100%	100%	5600%
COD	UGA	149	-	554	348	-	-	36	384	319	-	100%	100%	114%
COL	CHL	38	15	126	46	-	52	*	100	64	15	47%	47%	68%
COL	ECU	2,526	2,526	4,982	1,002	-	2,322	1,907	5,231	2,277	2,277	30%	30%	-10%
ERT	ARE	221	-	57	50	-	14	23	87	191	-	78%	78%	-14%
ERT	ETH	-	-	1,241	1,241	-	-	-	1,241	-	-	100%	100%	..
ERT	YEM	5	5	59	8	-	8	46	62	*	*	50%	50%	-60%
ETH	ARE	507	-	120	94	-	84	76	254	373	-	53%	53%	-26%
ETH	UGA	111	-	156	21	-	-	42	63	204	-	100%	100%	84%
ETH	YEM	444	444	254	99	-	98	484	681	17	17	50%	50%	-96%
GAZ	CYP	331	-	103	*	6	95	152	256	178	-	3%	9%	-46%
GAZ	LBY	8	-	60	27	-	-	10	37	31	-	100%	100%	288%
GEO	CYP	163	-	156	-	-	47	61	108	211	-	0%	0%	29%
GEO	HUN	11	-	71	*	8	28	29	66	16	14	3%	24%	45%
ICO	GUI	712	-	408	73	-	*	-	75	1,045	-	97%	97%	47%
ICO	MLI	-	-	170	170	-	-	-	170	-	-	100%	100%	..
IND	CYP	24	-	145	-	-	*	*	*	165	-	0%	0%	588%
IRN	CYP	757	-	271	17	*	328	195	542	486	*	5%	5%	-36%
IRQ	ARM	25	-	58	-	42	-	23	65	18	-	..	100%	-28%
IRQ	CYP	119	-	51	-	-	*	69	70	100	5	0%	0%	-16%
IRQ	LEB	487	-	77	-	-	-	13	13	551	-	13%
IRQ	ROM	108	423	78	11	5	31	12	59	127	90	26%	34%	18%
IRQ	YEM	276	276	138	-	-	-	*	*	410	410	49%
LBR	GUI	610	-	861	89	-	13	-	102	1,369	-	87%	87%	124%
LBR	LBY	6	-	113	107	-	*	6	115	*	-	98%	98%	-33%
LBR	SEN	275	275	70	15	-	-	-	15	330	330	100%	100%	20%
LKA	CYP	10	-	87	-	-	*	-	*	95	-	0%	0%	850%
MYA	IND	246	246	276	177	-	197	44	418	104	104	47%	47%	-58%
NIG	BEN	19	-	89	5	-	41	28	74	34	-	11%	11%	79%
NIG	PAK	341	341	202	-	-	190	21	211	332	331	0%	0%	-3%
PAK	CHI	18	-	92	33	-	9	31	73	37	-	79%	79%	106%
PAK	CYP	482	-	529	*	-	121	114	236	775	*	1%	1%	61%

TRENDS IN REFUGEE STATUS DETERMINATION, 1 JANUARY – 30 JUNE 2004
UNHCR GENEVA, 20 SEPTEMBER 2004

Table 3 (continued)

Origin	Country of asylum	Pending begin year		Applied since 1 Jan.	Decisions since 1 January					Pending end-quarter		Protection indicators		
		Total	UNHCR assisted		Recognized	Other	Rejected	Otherw. closed	Total	Total	UNHCR assisted	Recognition rates (excl. o/w. cl.)		% change pend. cases
												Ref. status	Total	
PAK	LKA	*	*	76	8	-	13	*	23	55	55	38%	38%	2650%
PAK	NEP	*	-	130	-	-	-	*	*	130	-	12900%
RUS	AZE	7,775	7,775	393	92	-	-	-	92	8,076	8,076	100%	100%	4%
RUS	CYP	262	-	148	-	*	108	44	155	255	-	0%	3%	-3%
RWA	UGA	182	-	85	22	-	-	-	22	245	-	100%	100%	35%
SLE	GUI	1,166	-	789	88	-	7	-	95	1,860	-	93%	93%	60%
SLE	ICO	77	77	313	5	-	74	-	79	311	311	6%	6%	304%
SOM	ARE	1,807	-	195	514	-	8	428	950	1,052	-	98%	98%	-42%
SOM	LBY	9	-	141	*	-	20	8	29	121	-	5%	5%	1244%
SRV	CAM	34	9	105	82	-	11	18	111	28	13	88%	88%	-18%
SUD	ARE	2,373	-	3,469	2,352	-	610	888	3,850	1,992	-	79%	79%	-16%
SUD	ETH	-	-	903	-	903	-	-	903	-	-	..	100%	..
SUD	UGA	71	-	55	68	-	-	11	79	47	-	100%	100%	-34%
SUD	YEM	60	60	72	-	-	23	105	128	*	*	0%	0%	-93%
SYR	CYP	44	-	95	6	-	17	11	34	105	-	26%	26%	139%
TUR	CYP	308	-	87	*	-	171	51	226	169	12	2%	2%	-45%
TUR	HUN	7	-	73	*	*	44	16	66	14	20	4%	12%	100%
TUR	SVN	10	10	155	-	-	14	138	152	13	13	0%	0%	30%
UKR	CYP	101	-	185	-	-	35	19	54	232	-	0%	0%	130%
YUG	BSN	521	521	70	31	-	157	32	220	371	371	16%	16%	-29%
YUG	HUN	16	-	55	*	7	26	8	45	26	14	13%	30%	63%
YUG	SVN	68	68	150	*	8	67	88	167	73	73	6%	15%	7%

TRENDS IN REFUGEE STATUS DETERMINATION, 1 JANUARY – 30 JUNE 2004
UNHCR GENEVA, 20 SEPTEMBER 2004

Annex I. List of country codes					
Code	Country name	Code	Country name	Code	Country name
AFG	Afghanistan	GNB	Guinea-Bissau	NRU	Nauru
ALB	Albania	GRE	Greece	NZL	New Zealand
ALG	Algeria	GRN	Grenada	OMN	Oman
AND	Andorra	GUA	Guatemala	PAK	Pakistan
ANG	Angola	GUI	Guinea	PAN	Panama
ANT	Antigua and Barbuda	GUY	Guyana	PAR	Paraguay
ARE	Egypt	HAI	Haiti	PER	Peru
ARG	Argentina	HKG	Hong Kong	PHI	Philippines
ARM	Armenia	HON	Honduras	PLW	Palau
AUL	Australia	HRV	Croatia	PNG	Papua New Guinea
AUS	Austria	HUN	Hungary	POL	Poland
AZE	Azerbaijan	ICE	Iceland	POR	Portugal
BAH	Bahrain	ICO	Côte d'Ivoire	PUE	Puerto Rico
BAR	Barbados	IND	India	QAT	Qatar
BDI	Burundi	INS	Indonesia	ROM	Romania
BEL	Belgium	IRE	Ireland	RSA	South Africa
BEN	Benin	IRN	Islamic Rep. of Iran	RUS	Russian Federation
BGD	Bangladesh	IRQ	Iraq	RWA	Rwanda
BHS	Bahamas	ISR	Israel	SAL	El Salvador
BHU	Bhutan	ITA	Italy	SAU	Saudi Arabia
BKF	Burkina Faso	JAM	Jamaica	SEN	Senegal
BLR	Belarus	JOR	Jordan	SEY	Seychelles
BOL	Bolivia	JPN	Japan	SIN	Singapore
BOT	Botswana	KAZ	Kazakstan	SLE	Sierra Leone
BRA	Brazil	KEN	Kenya	SMA	San Marino
BRU	Brunei Darussalam	KGZ	Kyrgyzstan	SOL	Solomon Islands
BSN	Bosnia and Herzegovina	KIR	Kiribati	SOM	Somalia
BUL	Bulgaria	KOR	Rep. of Korea	SPA	Spain
BZE	Belize	KRN	Dem. People's Rep. of Korea	SRV	Viet Nam
CAM	Cambodia	KUW	Kuwait	STK	Saint Kitts and Nevis
CAN	Canada	LAO	Lao People's Dem. Rep.	STP	Sao Tome and Principe
CAR	Central African Rep.	LBR	Liberia	SUD	Sudan
CHD	Chad	LBY	Libyan Arab Jamahiriya	SUR	Suriname
CHI	China	LCA	Saint Lucia	SVK	Slovakia
CHL	Chile	LEB	Lebanon	SVN	Slovenia
CMR	Cameroon	LES	Lesotho	SWA	Swaziland
COB	Congo	LIE	Liechtenstein	SWE	Sweden
COD	Dem. Rep. of Congo	LKA	Sri Lanka	SWI	Switzerland
COI	Comoros	LTU	Lithuania	SYR	Syrian Arab Rep.
COL	Colombia	LUX	Luxembourg	TAN	United Rep. of Tanzania
COS	Costa Rica	LVA	Latvia	THA	Thailand
CUB	Cuba	MAC	Macau	TJK	Tajikistan
CVI	Cape Verde	MAD	Madagascar	TKM	Turkmenistan
CYP	Cyprus	MAU	Mauritania	TMP	East Timor
CZE	Czech Rep.	MCD	FYR of Macedonia	TOG	Togo
DEN	Denmark	MCO	Monaco	TON	Tonga
DJB	Djibouti	MDA	Rep. of Moldova	TRT	Trinidad and Tobago
DMA	Dominica	MDV	Maldives (the)	TUN	Tunisia
DOM	Dominican Rep.	MEX	Mexico	TUR	Turkey
ECU	Ecuador	MLI	Mali	TUV	Tuvalu
EGU	Equatorial Guinea	MLS	Malaysia	UAE	United Arab Emirates
ERT	Eritrea	MLW	Malawi	UGA	Uganda
EST	Estonia	MNG	Mongolia	UKR	Ukraine
ETH	Ethiopia	MOR	Morocco	URU	Uruguay
FIJ	Fiji	MOZ	Mozambique	USA	United States
FIN	Finland	MTA	Malta	UZB	Uzbekistan
FPO	French Polynesia	MTS	Mauritius	VAN	Vanuatu
FRA	France	MYA	Myanmar	VCT	Saint Vincent & G.
GAB	Gabon	NAM	Namibia	VEN	Venezuela
GAM	Gambia	NEP	Nepal	WES	Samoa
GAZ	Gaza Strip	NET	Netherlands	WSA	Western Sahara
GBR	United Kingdom	NGR	Niger	YEM	Yemen
GEO	Georgia	NIC	Nicaragua	YUG	Serbia and Montenegro
GFR	Germany	NIG	Nigeria	ZAM	Zambia
GHA	Ghana	NOR	Norway	ZIM	Zimbabwe
		VAR	Various	STA	Stateless