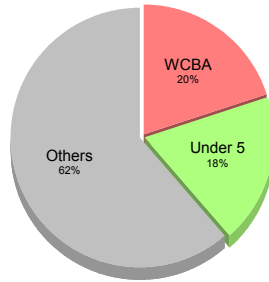


Origin of refugees:

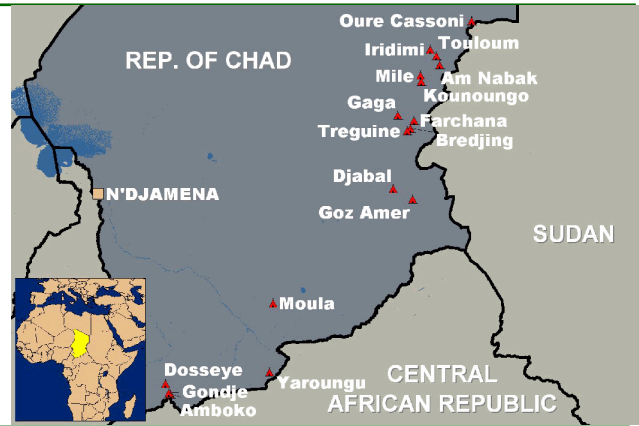
Centrafrique
Sudan

Population: 260,279



Implementing partners:

Health/HIV: IMC, IRC, COOPI, CSSI,
Nutrition: IMC, COOPI, CSSI, ACTE
Watsan: CARE, FISCR/CRT, SEC



Public Health Status

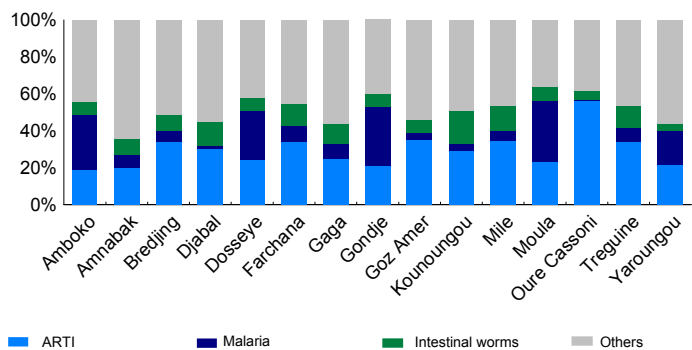
Health Impact

Indicator	Standard	Status
Crude Mortality Rate (CMR) (/1000/month)	0.34	< 1.5
Under-five Mortality Rate (U5MR) (/1000/month)	1.08	< 3.0
Infant Mortality Rate (IMR) (/1000 livebirths)	26.6	< 60
Neonatal Mortality Rate (NNMR) (/1000 livebirths)	4.9	< 40

Human Resources

Indicator	Standard	Status
No. of Medical Doctors	22	1 : 11,831
No. of Clinical Consultants	135	1 : 1,928
No. of Nurses (qualified)	135	1 : 1,928
No. of MCH staff / Midwives	31	1 : 8,396
No. of Community Health Workers (CHW)	375	1 : 694
No. of Hygiene Promoters	487	1 : 534

Figure 1: Proportional Crude Morbidity



Country Overview

A. Objectives

- Tous les réfugiés et la population hôtes avoisinantes des camps bénéficient des soins de santé primaire harmonisés selon les normes nationales et sont intégrés progressivement dans les structures locales.
- Tous les réfugiés et la population hôtes avoisinantes des camps renforcent leur autonomie vis-à-vis de la prise en charge de leurs soins de santé primaire.
- Tous les réfugiés et la population hôtes avoisinantes des camps bénéficient des soins de santé de qualité.
- Tous les réfugiés et la population hôtes avoisinantes des camps ont une bonne prise en charge nutritionnelle préventive, curative et promotionnelle.
- Tous les réfugiés et la population hôtes avoisinantes des camps bénéficient d'une bonne prise en charge en matière du VIH et en programme de la santé reproductive.

B. Progress

To what extent was each objective achieved? (use indicators to give examples of achievements).

- Les normes pour le personnel soignant sont respectés. Les 4/5 des infrastructures sont en matériel durable; Supervision conjointes avec le Ministère de la santé publique est effective. Intégration de 4 centres de santé dans les structures locales. Tous les membres des comités de santé sont formés.
- 17 réfugiés et 9 autochtones sont admis en 1ère année de l'école des infirmiers. 7 élèves passent en dernière année de formation. Budget programmé pour l'inscription des élèves sages femmes en 2010. La restructuration des comités de santé. Test du recouvrement des coûts par instauration achat de carnet.
- Taux d'utilisation de 1.3; TBM est de 0.34. La PCIME mise en oeuvre dans la majorité des camps; la promptitude EWARS passée de 20% à 80%; Augmentation complète SIS. Baisse de flambée d'épidémie. Taux de positivité du palu passe de 30.4% à 40%. % décès maternels investigués passe de 60% à 89%.
- La valeur calorique de la ration est passée de 1900 à 2200 kcal/personne. La prise en charge de la malnutrition au niveau des CNA et CNS se fait dans tous les camps. Le projet moulin est en cours dans tous les camps. Un stock de 20 tonnes de plumpy nut est stocké pour le plan de contingence.
- La Promotion du Programme de Conseil - Dépistage Volontaire est effective dans les camps du sud et en progression des ceux de l'est. Tous les prestataires des camps sont formés en PTME et commencent progressivement le programme.

C. Gaps & Planning

What conditions / activities are needed next year in order to produce the expected results?

- Lacunes : Les partenaires, ONG, sont souvent les premiers à ne pas s'investir dans cette stratégie. A planifier pour 2010 : Finir les constructions de toutes les structures en matériaux durables. Continuer à intégrer certains autres CS dans ceux de la population locale. Finalisation du guide de référence médicale.
- Lacunes : le test de recouvrement de coûts n'est toujours pas compris par tous. A planifier pour 2010 : Inscription d'élèves réfugiés sages femmes en première année en 2010. Intensification de sensibilisation sur le bénévolat des centres Le bénévolat des membres de comité de santé n'est pas encore
- Lacunes : les partenaires ne comprennent pas encore l'importance de la promptitude et de la complétude. A planifier : Effort pour atteindre les standards des indicateurs non atteint comme ceux de la vaccination, de la promptitude et de la complétude.
- Lacunes : La mortalité est encore élevée dans les CNA et le programme pour l'anémie. L'enquête nutritionnelle avortée. A planifier : Plusieurs formations pour les CNT et les CNA. Organiser une enquête. Commencer le projet anémie.
- Lacunes : CDV en retard dans l'Est, Utilisation de préservatifs faible, Faible utilisation du programme familial. A planifier : formations et sensibilisations, intégration de CDV dans les camps et ou les districts. Sensibilisations pour le planning familial et les CPN. Augmenter le taux des accouchements assistés.

Public Health Programmes

Coordination

Do monthly coordination meetings take place? Yes Yes

Access and Utilisation

Indicator	Standard	Status
No. of health facilities	17	1 : 15,311
No. of consultations per trained clinician per day	30	< 50
Health Utilization Rate (new visits/person/year)	1.0	1 - 4
Proportion of consultations by host population	13%	

Malaria

Is Act introduced as 1st line malaria treatment? Yes Yes

Key observations

What were the key activities carried out during the year? To what extent did the activities achieve expected results?

Mise en place et exécution de plan d'action 2009. Plusieurs formations. Début de l'élaboration d'un guide de références médicales. Renforcement de l'autonomisation des camps par l'inscription des 26 élèves à l'école de santé et par l'intégration des certains CS dans ceux de l'Etat. La redynamisation du SIS. Taux d'utilisation de 1.3 et TBM de 0.34 (tous dans les normes). La construction en matériaux durables de 7 CS. La santé communautaire revitalisée

Limitations/constraints

What external factors and/or conditions outside your direct control affected implementation of Public Health Programmes planned activities?

L'insécurité est un grand facteur déterminant et limitant. Elle reste un défi à relever pr toutes les parties. Insuffisance des ressources humaines locales (infirmiers, médecins). Départ de MSFL d'Iriba affectant les activités de camps et du district d'Iriba. Certains autochtones ou réfugiés ont encore peur de consulter dans les institutions communes.

		Key observations	Limitations/constraints
Public Health Programmes			
IMMUNISATION	<p>Figure 2: Vaccination coverage</p>	<p>Le taux moyen de couverture vaccinale contre la rougeole est de 90.3%. La couverture vaccinale chez les enfants entièrement vaccinés est de 76.6% (données du SIS car pas d'enquête nutritionnelle en 2009). Il y a eu 2 campagnes de vaccination contre la rougeole dans les camps. Plusieurs recyclages du personnel ont eu lieu.</p>	<p>Parfois ruptures de vaccins auprès des districts, ce qui conduit à chercher du vaccin au niveau central. La couverture vaccinale auprès de la population locale environnant les camps est faible.</p>
NUTRITION AND FOOD SECURITY	<p>Surveys & Assessments</p> <p>Date of last nutrition survey: Jul 2008 Date of last last JAM: Nov 2009</p> <p>Malnutrition</p> <p>Global Acute Malnutrition Rate (%): 12.3% < 5% ❌ Severe Acute Malnutrition Rate (%): 0.8% < 2% ✅ Prevalence of anaemia in children under five: 31% < 20% ⚠️ Prevalence of anaemia in women of reproductive age: 31% < 20% ⚠️ Average number of kilocalories per person per day: 1898 2100 ❌</p> <p>Food Security</p> <p>Does UNHCR provide complementary food? No Did the content of the GFR change during the year? Yes Did WFP report any pipeline breaks during the year? Yes No ❌ Have PoC been included in the National FS Plan? Yes Yes ✅ Prop. of ration sold by refugees to buy other food items: N/A% < 30% ⚠️</p>	<p>La quasi totalité des enfants malnutris dépités sont admis dans les programmes de nutrition. Le taux de récupération dans les CNS est de 72.4% et celui de la mortalité dans ce programme est de 0.4%. Dans les CNT ces taux sont respectivement de 77% et 8.7%. Au niveau de la prise en charge à base communautaire, le taux de récupération est 74.1% et de mortalité 9.55%. Formations conjointes PAM, UNICEF et UNHCR. Supervisions conjointes PAM/UNICEF/HCR</p> <p>La mise en œuvre des moulins communautaires conjointement avec le PAM se poursuit dans les camps. Les moulins sont disponibles et la sélection des bénéficiaires les plus vulnérables a été faite conjointement avec les services communautaires en vue de la gestion de ces moulins. Les comités de gestion par moulin se mettent place.</p>	<p>Le taux de récupération dans les CNS est un peu bas. La pluviométrie n'a pas été pas bonne. Les mères vont plus souvent à la frontière soudanaise en saison des pluies pour cultiver et reviennent avec les enfants dans un état de malnutrition avancé. Les CNA ont été mises en place dans tous les camps mais le suivi des patients n'est pas correctement assuré par les agents de santé communautaires. Manque de budget à temps pour l'enquête nutritionnelle</p> <p>Le financement pour l'installation et le fonctionnement des moulins au cours de l'année a été une difficulté majeure en 2009. Le respect du genre dans la mise en place des comités de gestion a été une grande contrainte.</p>
REPRO HEALTH	<p>Maternal and Newborn Health</p> <p>Coverage of complete antenatal care (4 or more visits): 77% 100% ❌ Proportion of deliveries attended by skilled personnel: 67% ≥ 50% ✅ Proportion of deliveries performed by caesarean section: 2% 5 - 15% ❌ Proportion of low birth weight deliveries: 5% < 15% ✅</p> <p>Family planning</p> <p>Contraceptive prevalence rate: 0% ≥ 30% ❌</p>	<p>La proportion des accouchements au centre de santé est de 97% (dans les normes). Celle des naissances assistées par un personnel qualifié est de 67% (en dessous des normes HCR). 99% (dans la norme) des complications obstétricales ont été traitées dans des centres de santé. La CPN a inclus progressivement la PTME. La couverture CPN complet est 77% (légèrement inférieur à la norme). Mais la couverture CPN2 est au dessus de la norme.</p> <p>Le nombre de cas de viols rapportés est de 0.3/10000/an. Un effort de restructuration est mis en place pour 2010 (centralisation des déclarations au niveau de la protection et du partenaire de santé) pour augmenter le rapportage au cours des années futures et éviter un double rapportage.</p>	<p>L'insécurité est un grand facteur déterminant et limitant. Elle reste un défi à relever par tous les acteurs. Insuffisance des ressources humaines locales (sage femmes). Les travaux champêtres limitent la venue des femmes aux CPN.</p> <p>La sous déclaration des cas des violences sexuelles et sexistes est due à la multiplicité ou politique des partenaires, à la mentalité et culture des réfugiés.</p>
SGBV	<p>Sexual and Gender-based Violence</p> <p>Incidence of reported rape (/10,000/year): 0.29 Prop. rape survivors who received PEP < 72h: 86% 100% ❌ Prop. rape survivors who received ECP < 120h: 183% 100% ✅ Prop. rape survivors who received STI < 2 wks: 214% 100% ✅</p>		
HIV/AIDS	<p>Monitoring & Evaluation</p> <p>Are PoCs included in national HIV strategic plans? Yes Yes Are PoCs included in national HIV sent surveillance? Yes Yes Date of last last KAPB/BSS: Sep 2009</p> <p>Prevention</p> <p>Condom distribution rate: 0.09 > 0.5 ❌ Do appropriate IEC materials exist for PoCs? Yes Yes ✅ Are risk groups targeted with prevention programmes? Yes Yes ✅ Proportion of blood units screened for HIV: 100 100% ✅ PMTCT coverage: 26% 100% ❌</p> <p>Care and Treatment</p> <p>Do PoCs have equal access to ART as host? Yes Yes ✅ Number of PoCs receiving ART: 43 Prop. HIV positive mothers receiving co-trimox: 4% 100% ❌ Prop. HIV positive infants receiving co-trimox: 5% 100% ❌</p>	<p>Le taux de distribution de préservatifs est de 0.14/personne/mois à l'Est contre 0.08 l'année passée. Mais la moyenne du pays est de 0.09 car il y a eu beaucoup de ruptures au Sud où l'acceptation est bonne. Celui de la couverture PTME est de 26% car la majorité programmes ont démarré dans le second semestre. Les CDV ont été installés au Sud avec un équipement (CD4) mais à l'Est les CDV démarrent timidement. Tous les 57 patients éligibles du Sud de l'année pour les ARV sont sous ARV.</p>	<p>Le taux de distribution de préservatifs est encore bas mais a augmenté par rapport à l'année passée (0.08). La culture musulmane continue son influence sur la non utilisation de préservatifs. Un effort doit être fait pour éviter les ruptures au Sud où l'acceptabilité est bonne. Il y a beaucoup de ruptures de déterminé à l'Est due à une mauvaise gestion et ou approvisionnement de districts.</p>
WASH	<p>Water, Sanitation and Hygiene</p> <p>Av quantity of potable water / person / day (litres): 16 > 20 ❌ No. of persons per usable water tap: 270 < 80 ❌ No. of persons per drop-hole in communal latrine: 15 ≤ 20 ✅ Prop. of population living within 200m from water point: 90% 100% ⚠️ Prop. of families with latrines: 59% 100% ❌ Prop. families receiving >250g soap / person / month: 87% ≥ 90% ⚠️ Prop. camps with 1 hygiene promoter / 500 persons: % ≥ 75% ⚠️</p>	<p>Institutionnelle : Les grandes directives stratégiques de UN WATER (transboundary water challenges, water scarcity, gender, transfer of competences) sont prises en considérations, les 7 objectifs stratégiques mondiaux du UNHCR sont appliqués par des exemples concrets au Tchad grâce au Plan Stratégique et aux 7 dossiers thématiques et 7 experts. Technique : Image Radar aérienne, étude géomorphologique, inventaires des installations, radar et prospection géophysique</p>	<p>Faible niveau technique du personnel expatrié, nécessité de transfert de compétence pour les équipes nationales, coordination avec les autorités et insécurité. Climat et environnement extrême.</p>

Camp opened: 2003

Population: 11,963

Camp closed:

The source of population data in this report is:

HIS start date: Nov 2007

Origin of refugees:

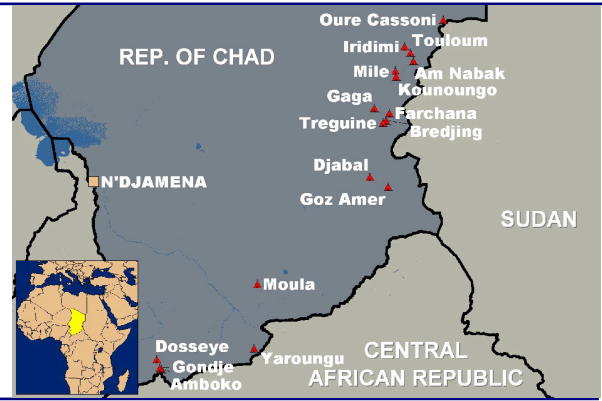
Centrafrique

Implementing partners:

Health/HIV: COOPI, Mentor Initiative

Nutrition: COOPI

Watsan: CARE



Public Health Status

Health Impact

	Indicator	Standard	
Crude Mortality Rate (CMR) (/1000/month)	0.33	< 1.5	✓
Under-five Mortality Rate (U5MR) (/1000/month)	1.30	< 3.0	✓
Infant Mortality Rate (IMR) (/1000 livebirths)	37.2	< 60	✓
Neonatal Mortality Rate (NNMR) (/1000 livebirths)	0.0	< 40	✓

Figure 1: Crude and Under-five Mortality

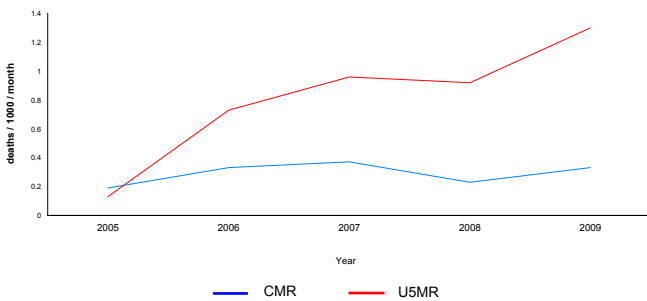


Figure 2: Crude Morbidity

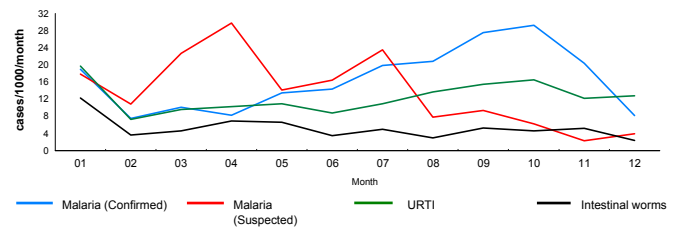
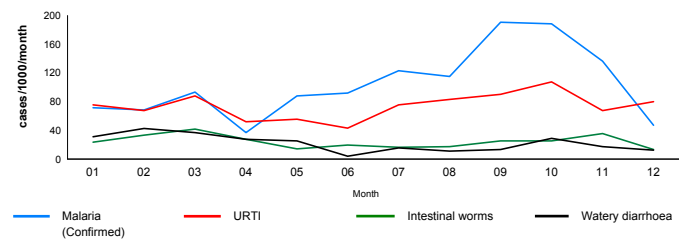


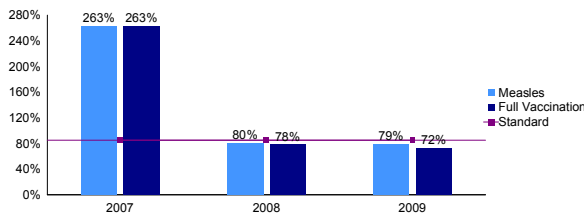
Figure 3: Under-five Morbidity



Public Health Programmes

	Nº	Indicator	Standard	
Human Resources				
No. of Medical Doctors	0	1 : 0	1 : <50,000	✓
No. of Clinical Consultants	6	1 : 1,994	1 : <10,000	✓
No. of Nurses (qualified)	7	1 : 1,709	1 : <10,000	✓
No. of MCH staff / Midwives	2	1 : 5,982	1 : <10,000	✓
No. of Community Health Workers (CHW)	24	1 : 498	1 : 500-1,000	⚠
No. of Hygiene Promoters	21	1 : 570	1 : <500	⚠
Access and Utilisation				
No. of health facilities	1	1 : 11,963	1 : <10,000	⚠
No. of consultations per trained clinician per day		30	< 50	✓
Health Utilization Rate (new visits/person/year)		1.0	1 - 4	✓
Proportion of consultations by host population		0.17%		
Malaria				
Is Act introduced as 1st line malaria treatment?		Yes	Yes	✓

Figure 4: Vaccination coverage



Malnutrition

	Indicator	Standard	
Global Acute Malnutrition Rate (%)	3.8%	< 5%	✓
Severe Acute Malnutrition Rate (%)	1.1%	< 2%	✓
Prevalence of anaemia in children under five		< 20%	ⓘ
Prevalence of anaemia in women of reproductive age		< 20%	ⓘ
Average number of kilocalories per person per day	1200	2100	✗

	Indicator	Standard	
Maternal and Newborn Health			
Coverage of complete antenatal care (4 or more visits)	101%	100%	✓
Proportion of deliveries attended by skilled personnel	90%	≥ 50%	✓
Proportion of deliveries performed by caesarean section	0%	5 - 15%	✗
Proportion of low birth weight deliveries	1%	< 15%	✓
Family planning			
Contraceptive prevalence rate	1%	≥ 30%	✗
Sexual and Gender-based Violence			
Incidence of reported rape (/10,000/year)	0.00		
Prop. rape survivors who received PEP < 72h		100%	ⓘ
Prop. rape survivors who received ECP < 120h		100%	ⓘ
Prop. rape survivors who received STI < 2 wks		100%	ⓘ

	Indicator	Standard	
Prevention			
Condom distribution rate	0.55	> 0.5	✓
Do appropriate IEC materials exist for PoCs?	Yes	Yes	✓
Are risk groups targeted with prevention programmes?	Yes	Yes	✓
Proportion of donated blood units screened for HIV		100%	ⓘ
PMTCT coverage	95%	100%	⚠
Care and Treatment			
Do PoCs have equal access to ART as host?	Yes	Yes	✓
Number of PoCs receiving ART	10		
Prop. HIV positive mothers receiving co-trimox		100%	ⓘ
Prop. HIV positive infants receiving co-trimox		100%	ⓘ

	Indicator	Standard	
Water, Sanitation and Hygiene			
Av quantity of potable water / person / day (litres)	23	> 20	✓
No. of persons per usable water tap	524	< 80	✗
No. of persons per drop-hole in communal latrine	15	≤ 20	✓
Prop. of population living within 200m from water point	100%	100%	✓
Prop. of families with latrines	100%	100%	✓
Prop. families receiving >250g soap / person / month	100%	≥ 90%	✓

Observations

Les données de nutrition sont celles de l'enquete nutritionnelle réalisée en 2008. Il n'y a pas eu d'enquete nutritionnelle en 2009. Le personnel medical est celui du centre de santé de Beureh qui appartient à l'état tchadien. Ce centre dessert a la fois Beureh (village), Amboko et Gondje (camps de réfugiés). L'enquete nutritionnelle de ACF réalisé en 2008 n'a pas pris en compte l'anemie.

Camp opened: 2004

Population: 17,321

Camp closed:

The source of population data in this report is:

HIS start date: Nov 2007

Origin of refugees:

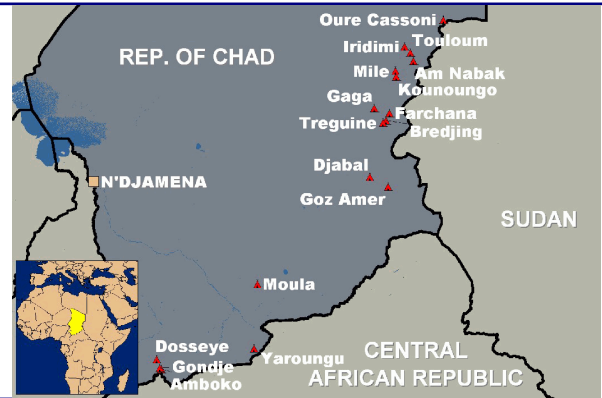
Sudan

Implementing partners:

Health/HIV: IMC

Nutrition: IMC

Watsan: CARE



Public Health Status

Health Impact

Indicator	Standard	Status
Crude Mortality Rate (CMR) (/1000/month)	0.13	< 1.5
Under-five Mortality Rate (U5MR) (/1000/month)	0.17	< 3.0
Infant Mortality Rate (IMR) (/1000 livebirths)	5.8	< 60
Neonatal Mortality Rate (NNMR) (/1000 livebirths)	1.9	< 40

Figure 1: Crude and Under-five Mortality

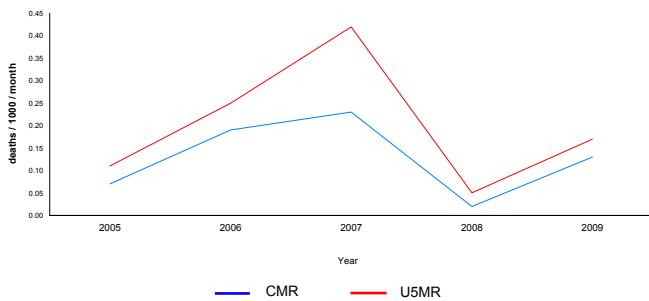


Figure 2: Crude Morbidity

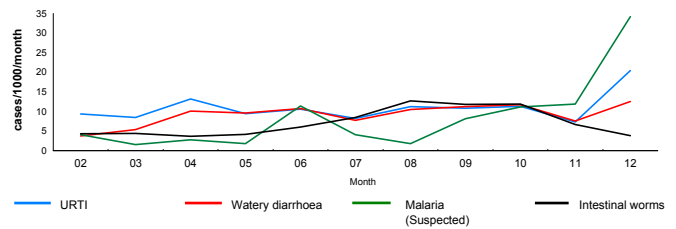
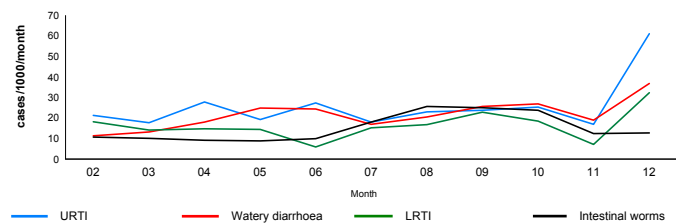


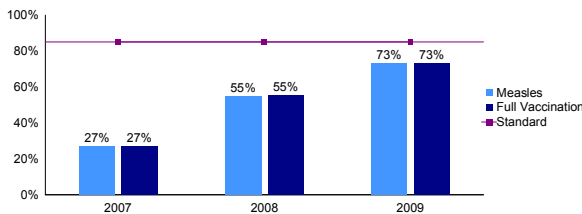
Figure 3: Under-five Morbidity



Public Health Programmes

Indicator	Nº	Indicator	Standard	Status
Human Resources				
No. of Medical Doctors	2	1 : 8,660	1 : <50,000	✓
No. of Clinical Consultants	5	1 : 3,464	1 : <10,000	✓
No. of Nurses (qualified)	4	1 : 4,330	1 : <10,000	✓
No. of MCH staff / Midwives	2	1 : 8,660	1 : <10,000	✓
No. of Community Health Workers (CHW)	27	1 : 642	1 : 500-1,000	✓
No. of Hygiene Promoters	35	1 : 495	1 : <500	✓
Access and Utilisation				
No. of health facilities	1	1 : 17,321	1 : <10,000	✗
No. of consultations per trained clinician per day		33	< 50	✓
Health Utilization Rate (new visits/person/year)		1.0	1 - 4	⚠
Proportion of consultations by host population		15.43%		
Malaria				
Is Act introduced as 1st line malaria treatment?		Yes	Yes	✓

Figure 4: Vaccination coverage



Indicator	Standard	Status
Maternal and Newborn Health		
Coverage of complete antenatal care (4 or more visits)	91%	100%
Proportion of deliveries attended by skilled personnel	63%	≥ 50%
Proportion of deliveries performed by caesarean section	0%	5 - 15%
Proportion of low birth weight deliveries	4%	< 15%
Family planning		
Contraceptive prevalence rate	0%	≥ 30%
Sexual and Gender-based Violence		
Incidence of reported rape (/10,000/year)	0.00	
Prop. rape survivors who received PEP < 72h		100%
Prop. rape survivors who received ECP < 120h		100%
Prop. rape survivors who received STI < 2 wks		100%
Prevention		
Condom distribution rate	0.02	> 0.5
Do appropriate IEC materials exist for PoCs?	Yes	Yes
Are risk groups targeted with prevention programmes?	Yes	Yes
Proportion of donated blood units screened for HIV		100%
PMTCT coverage	0%	100%
Care and Treatment		
Do PoCs have equal access to ART as host?	Yes	Yes
Number of PoCs receiving ART	0	
Prop. HIV positive mothers receiving co-trimox		100%
Prop. HIV positive infants receiving co-trimox		100%
Water, Sanitation and Hygiene		
Av quantity of potable water / person / day (litres)	7	> 20
No. of persons per usable water tap	212	< 80
No. of persons per drop-hole in communal latrine	18	≤ 20
Prop. of population living within 200m from water point	85%	100%
Prop. of families with latrines	38%	100%
Prop. families receiving >250g soap / person / month	83%	≥ 90%

Malnutrition

Indicator	Value	Standard	Status
Global Acute Malnutrition Rate (%)	9.1%	< 5%	✗
Severe Acute Malnutrition Rate (%)	0.5%	< 2%	✓
Prevalence of anaemia in children under five	28%	< 20%	⚠
Prevalence of anaemia in women of reproductive age	26%	< 20%	⚠
Average number of kilocalories per person per day	2247	2100	✓

Observations

Les données de nutrition sont celles de l'enquete nutritionnelle réalisée en 2008. Il n'y a pas eu d'enquete nutritionnelle en 2009 pour raison de sécurité. Il y a eu retrait des partenaires du camp en janvier, février pour raison d'insecurité et le camp a été géré selon le plan de contingence par les réfugiés eux-mêmes. Deux campagnes de vaccination contre la rougeole (plus vitamine A) ont été réalisées au cours de l'année conjointement avec UNICEF et les partenaires.

Camp opened: 2004

Population: 32,327

Camp closed:

The source of population data in this report is:

HIS start date: Sep 2008

Origin of refugees:

Sudan

Implementing partners:

Health/HIV: IRC, FISCR

Nutrition: IRC

Watsan: FISCR, CRT



Public Health Status

Health Impact

Indicator	Standard	Status
Crude Mortality Rate (CMR) (/1000/month)	0.54	< 1.5
Under-five Mortality Rate (U5MR) (/1000/month)	1.73	< 3.0
Infant Mortality Rate (IMR) (/1000 livebirths)	46.2	< 60
Neonatal Mortality Rate (NNMR) (/1000 livebirths)	8.2	< 40

Figure 1: Crude and Under-five Mortality

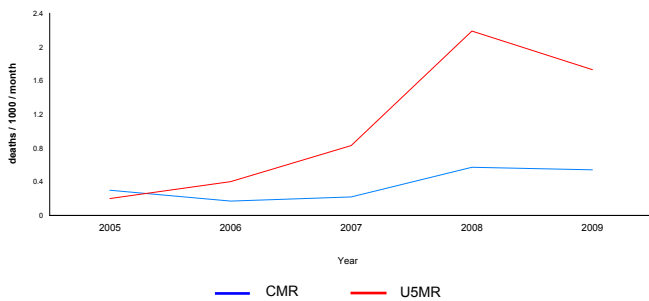


Figure 2: Crude Morbidity

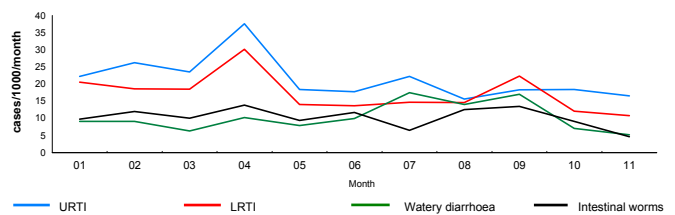
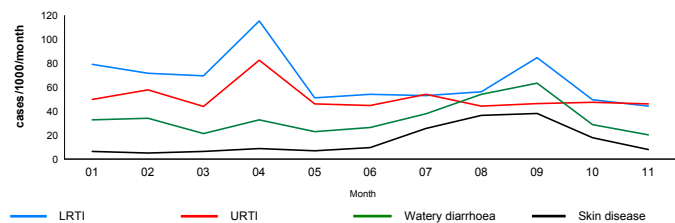


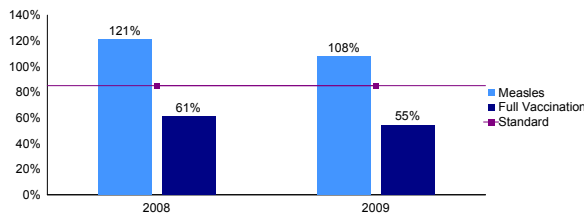
Figure 3: Under-five Morbidity



Public Health Programmes

Programme	Nº	Indicator	Standard	Status
Human Resources				
No. of Medical Doctors	3	1 : 10,776	1 : <50,000	✓
No. of Clinical Consultants	10	1 : 3,233	1 : <10,000	✓
No. of Nurses (qualified)	15	1 : 2,155	1 : <10,000	✓
No. of MCH staff / Midwives	4	1 : 8,082	1 : <10,000	✓
No. of Community Health Workers (CHW)	45	1 : 718	1 : 500-1,000	✓
No. of Hygiene Promoters	65	1 : 497	1 : <500	✓
Access and Utilisation				
No. of health facilities	2	1 : 16,164	1 : <10,000	✗
No. of consultations per trained clinician per day		20	< 50	✓
Health Utilization Rate (new visits/person/year)		1.0	1 - 4	✓
Proportion of consultations by host population		5.60%		✓
Malaria				
Is Act introduced as 1st line malaria treatment?		Yes	Yes	✓

Figure 4: Vaccination coverage



Malnutrition

Indicator	Value	Standard	Status
Global Acute Malnutrition Rate (%)	11.9%	< 5%	✗
Severe Acute Malnutrition Rate (%)	0.8%	< 2%	✓
Prevalence of anaemia in children under five	34%	< 20%	⚠
Prevalence of anaemia in women of reproductive age	37%	< 20%	⚠
Average number of kilocalories per person per day	2247	2100	✓

Programme	Indicator	Standard	Status
Maternal and Newborn Health			
Coverage of complete antenatal care (4 or more visits)	69%	100%	✗
Proportion of deliveries attended by skilled personnel	40%	≥ 50%	⚠
Proportion of deliveries performed by caesarean section	9%	5 - 15%	✓
Proportion of low birth weight deliveries	13%	< 15%	✓
Family planning			
Contraceptive prevalence rate	0%	≥ 30%	✗
Sexual and Gender-based Violence			
Incidence of reported rape (/10,000/year)	0.34		
Prop. rape survivors who received PEP < 72h	100%	100%	✓
Prop. rape survivors who received ECP < 120h	100%	100%	✓
Prop. rape survivors who received STI < 2 wks	100%	100%	✓

Programme	Indicator	Standard	Status
Prevention			
Condom distribution rate	0.00	> 0.5	✗
Do appropriate IEC materials exist for PoCs?	Yes	Yes	✓
Are risk groups targeted with prevention programmes?	Yes	Yes	✓
Proportion of donated blood units screened for HIV	100%	100%	✓
PMTCT coverage	100%	100%	✓
Care and Treatment			
Do PoCs have equal access to ART as host?	Yes	Yes	✓
Number of PoCs receiving ART	0		
Prop. HIV positive mothers receiving co-trimox		100%	ⓘ
Prop. HIV positive infants receiving co-trimox		100%	ⓘ

Programme	Indicator	Standard	Status
Water, Sanitation and Hygiene			
Av quantity of potable water / person / day (litres)	19	> 20	⚠
No. of persons per usable water tap	122	< 80	✗
No. of persons per drop-hole in communal latrine	9	≤ 20	✓
Prop. of population living within 200m from water point	85%	100%	ⓘ
Prop. of families with latrines	38%	100%	✗
Prop. families receiving >250g soap / person / month	83%	≥ 90%	⚠

Observations

Les données de nutrition sont celles de l'enquete nutritionnelle réalisée en 2008. Il n'y a pas eu d'enquete nutritionnelle en 2009 pour des raisons d'insécurité. Deux campagnes de vaccination contre la rougeole (plus vitamine A) ont été réalisées au cours de l'année conjointement avec UNICEF et les partenaires.

Camp opened: 2004

Population: 17,619

Camp closed:

The source of population data in this report is:

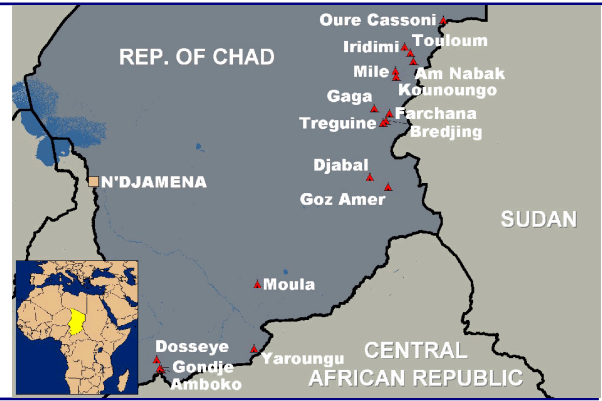
HIS start date: Nov 2007

Origin of refugees:

Sudan

Implementing partners:

Health/HIV: COOPI
 Nutrition: COOPI
 Watsan: OXFAM Intermon



Public Health Status

Health Impact

Indicator	Standard	Status
Crude Mortality Rate (CMR) (/1000/month)	0.72	< 1.5
Under-five Mortality Rate (U5MR) (/1000/month)	2.21	< 3.0
Infant Mortality Rate (IMR) (/1000 livebirths)	37.9	< 60
Neonatal Mortality Rate (NNMR) (/1000 livebirths)	4.2	< 40

Figure 1: Crude and Under-five Mortality

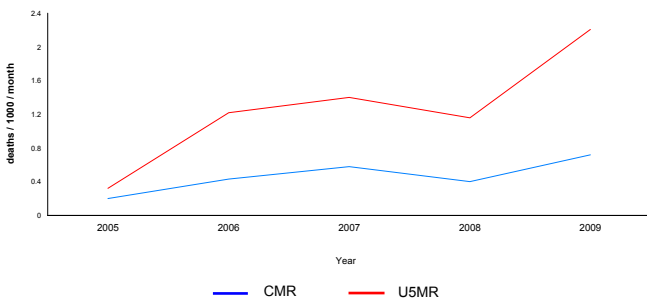


Figure 2: Crude Morbidity

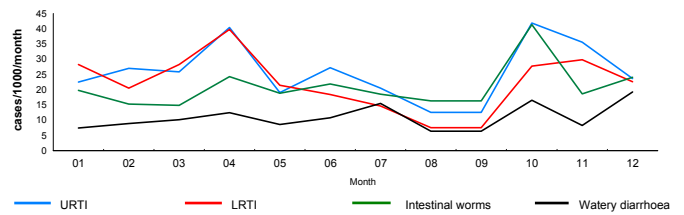
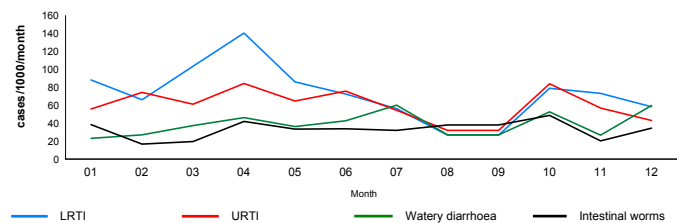


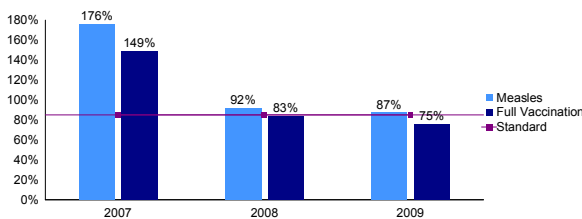
Figure 3: Under-five Morbidity



Public Health Programmes

Indicator	Standard	Status
Human Resources		
No. of Medical Doctors	1 : 8,810	1 : <50,000
No. of Clinical Consultants	1 : 979	1 : <10,000
No. of Nurses (qualified)	1 : 1,101	1 : <10,000
No. of MCH staff / Midwives	2	1 : <10,000
No. of Community Health Workers (CHW)	1 : 653	1 : 500-1,000
No. of Hygiene Promoters	1 : 503	1 : <500
Access and Utilisation		
No. of health facilities	1 : 17,619	1 : <10,000
No. of consultations per trained clinician per day	36	< 50
Health Utilization Rate (new visits/person/year)	2.0	1 - 4
Proportion of consultations by host population	3.29%	
Malaria		
Is Act introduced as 1st line malaria treatment?	Yes	Yes

Figure 4: Vaccination coverage



Malnutrition

Indicator	Standard	Status
Global Acute Malnutrition Rate (%)	10.4%	< 5%
Severe Acute Malnutrition Rate (%)	0.9%	< 2%
Prevalence of anaemia in children under five	28%	< 20%
Prevalence of anaemia in women of reproductive age	23%	< 20%
Average number of kilocalories per person per day	2247	2100

Indicator	Standard	Status
Maternal and Newborn Health		
Coverage of complete antenatal care (4 or more visits)	49%	100%
Proportion of deliveries attended by skilled personnel	98%	≥ 50%
Proportion of deliveries performed by caesarean section	1%	5 - 15%
Proportion of low birth weight deliveries	3%	< 15%
Family planning		
Contraceptive prevalence rate	0%	≥ 30%
Sexual and Gender-based Violence		
Incidence of reported rape (/10,000/year)	0.00	
Prop. rape survivors who received PEP < 72h		100%
Prop. rape survivors who received ECP < 120h		100%
Prop. rape survivors who received STI < 2 wks		100%

Indicator	Standard	Status
Prevention		
Condom distribution rate	0.01	> 0.5
Do appropriate IEC materials exist for PoCs?	Yes	Yes
Are risk groups targeted with prevention programmes?	Yes	Yes
Proportion of donated blood units screened for HIV		100%
PMTCT coverage	64%	100%
Care and Treatment		
Do PoCs have equal access to ART as host?	Yes	Yes
Number of PoCs receiving ART	0	
Prop. HIV positive mothers receiving co-trimox	0%	100%
Prop. HIV positive infants receiving co-trimox	1%	100%

Indicator	Standard	Status
Water, Sanitation and Hygiene		
Av quantity of potable water / person / day (litres)	14	> 20
No. of persons per usable water tap	93	< 80
No. of persons per drop-hole in communal latrine	11	≤ 20
Prop. of population living within 200m from water point	85%	100%
Prop. of families with latrines	38%	100%
Prop. families receiving >250g soap / person / month	83%	≥ 90%

Observations

Les données de nutrition sont celles de l'enquete nutritionnelle réalisée en 2008. Il n'y a pas eu d'enquete nutritionnelle en 2009 pour des raisons d'insécurité. Deux campagnes de vaccination contre la rougeole (plus vitamine A) ont été réalisées au cours de l'année conjointement avec UNICEF et les partenaires.



Camp opened: 2006

Population: 8,675

Camp closed:

The source of population data in this report is:

HIS start date: Nov 2007

Origin of refugees:

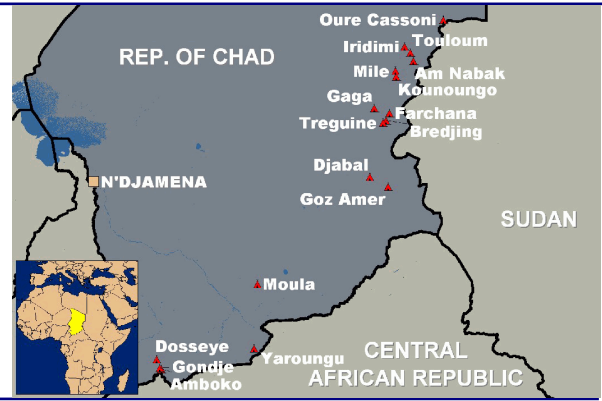
Centrafrique

Implementing partners:

Health/HIV: COOPI, Mentor Initiative

Nutrition: COOPI

Watsan: CARE



Public Health Status

Health Impact

Indicator	Standard	Status
Crude Mortality Rate (CMR) (/1000/month)	0.34	< 1.5
Under-five Mortality Rate (U5MR) (/1000/month)	0.82	< 3.0
Infant Mortality Rate (IMR) (/1000 livebirths)	21.5	< 60
Neonatal Mortality Rate (NNMR) (/1000 livebirths)	3.1	< 40

Figure 1: Crude and Under-five Mortality

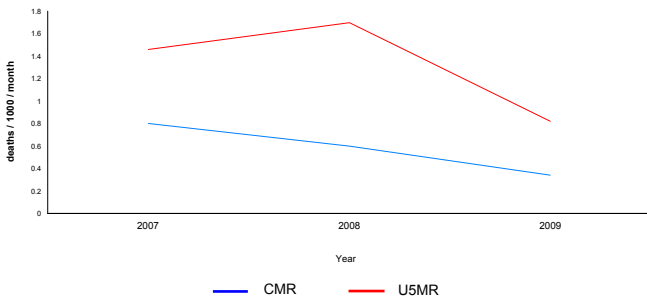


Figure 2: Crude Morbidity

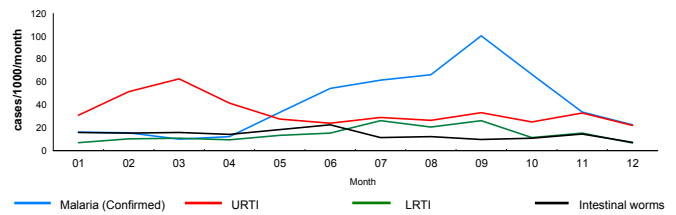
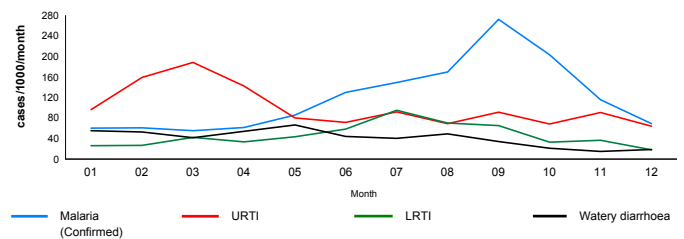


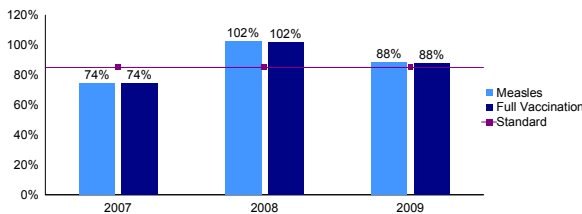
Figure 3: Under-five Morbidity



Public Health Programmes

Indicator	Nº	Indicator	Standard	Status
Human Resources				
No. of Medical Doctors	1	1 : 8,675	1 : <50,000	✓
No. of Clinical Consultants	6	1 : 1,446	1 : <10,000	✓
No. of Nurses (qualified)	8	1 : 1,084	1 : <10,000	✓
No. of MCH staff / Midwives	1	1 : 8,675	1 : <10,000	✓
No. of Community Health Workers (CHW)	12	1 : 723	1 : 500-1,000	✓
No. of Hygiene Promoters	16	1 : 542	1 : <500	⚠
Access and Utilisation				
No. of health facilities	1	1 : 8,675	1 : <10,000	✓
No. of consultations per trained clinician per day		32	< 50	✓
Health Utilization Rate (new visits/person/year)		2.0	1 - 4	✓
Proportion of consultations by host population		11.82%		✓
Malaria				
Is Act introduced as 1st line malaria treatment?		Yes	Yes	✓

Figure 4: Vaccination coverage



Indicator	Value	Standard	Status
Malnutrition			
Global Acute Malnutrition Rate (%)	9.8%	< 5%	✗
Severe Acute Malnutrition Rate (%)	2.0%	< 2%	✓
Prevalence of anaemia in children under five		< 20%	ⓘ
Prevalence of anaemia in women of reproductive age		< 20%	ⓘ
Average number of kilocalories per person per day	1200	2100	✗

Indicator	Standard	Status
Maternal and Newborn Health		
Coverage of complete antenatal care (4 or more visits)	82%	100%
Proportion of deliveries attended by skilled personnel	74%	≥ 50%
Proportion of deliveries performed by caesarean section	0%	5 - 15%
Proportion of low birth weight deliveries	14%	< 15%
Family planning		
Contraceptive prevalence rate	1%	≥ 30%
Sexual and Gender-based Violence		
Incidence of reported rape (/10,000/year)	0.00	
Prop. rape survivors who received PEP < 72h		100%
Prop. rape survivors who received ECP < 120h		100%
Prop. rape survivors who received STI < 2 wks		100%

Indicator	Standard	Status
Prevention		
Condom distribution rate	0.65	> 0.5
Do appropriate IEC materials exist for PoCs?	Yes	Yes
Are risk groups targeted with prevention programmes?	Yes	Yes
Proportion of donated blood units screened for HIV		100%
PMTCT coverage	103%	100%
Care and Treatment		
Do PoCs have equal access to ART as host?	Yes	Yes
Number of PoCs receiving ART	5	
Prop. HIV positive mothers receiving co-trimox	100%	100%
Prop. HIV positive infants receiving co-trimox	200%	100%

Indicator	Standard	Status
Water, Sanitation and Hygiene		
Av quantity of potable water / person / day (litres)	20	> 20
No. of persons per usable water tap	550	< 80
No. of persons per drop-hole in communal latrine	19	≤ 20
Prop. of population living within 200m from water point	100%	100%
Prop. of families with latrines	100%	100%
Prop. families receiving >250g soap / person / month	100%	≥ 90%

Observations

Les données de nutrition sont celles de l'enquete nutritionnelle réalisée en 2008. Il n'y a pas eu d'enquete nutritionnelle en 2009. L'enquete nutritionnelle de ACF réalisée en 2008 n'a pas pris en compte l'anemie. Le meme medecin partage son temps entre Gondje et Dosseye.

Camp opened: 2004

Population: 20,470

Camp closed:

The source of population data in this report is:

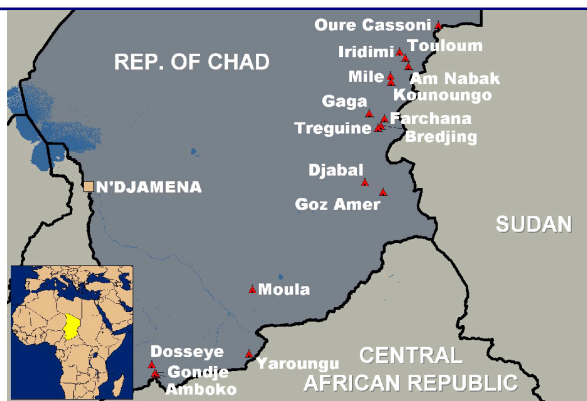
HIS start date: Sep 2008

Origin of refugees:

Sudan

Implementing partners:

Health/HIV: CSSI
Nutrition: CSSI
Watsan: SECADEV



Public Health Status

Health Impact

Indicator	Standard	Status
Crude Mortality Rate (CMR) (/1000/month)	0.35	< 1.5
Under-five Mortality Rate (U5MR) (/1000/month)	1.36	< 3.0
Infant Mortality Rate (IMR) (/1000 livebirths)	32.7	< 60
Neonatal Mortality Rate (NNMR) (/1000 livebirths)	2.6	< 40

Figure 1: Crude and Under-five Mortality

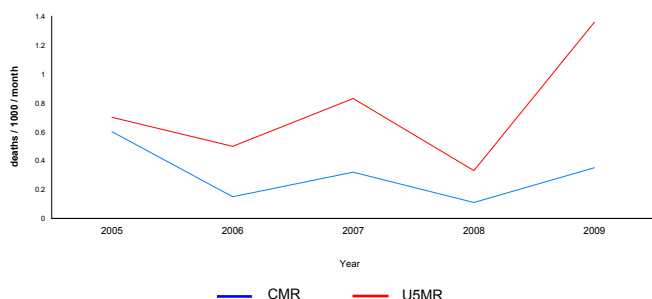


Figure 2: Crude Morbidity

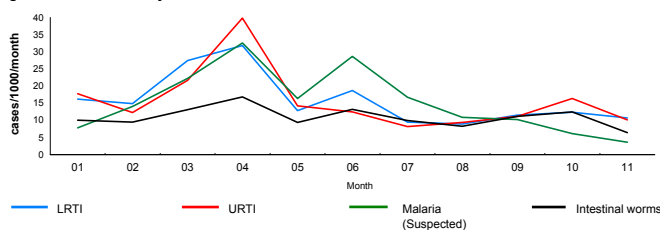
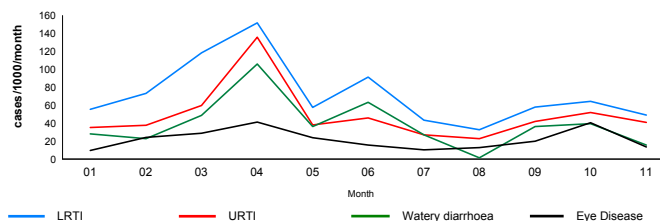


Figure 3: Under-five Morbidity



Public Health Programmes

Human Resources

No.	Indicator	Standard	Status
2	1 : 10,235	1 : <50,000	✓
16	1 : 1,279	1 : <10,000	✓
14	1 : 1,462	1 : <10,000	✓
3	1 : 6,823	1 : <10,000	✓
25	1 : 819	1 : 500-1,000	✓
42	1 : 487	1 : <500	✓

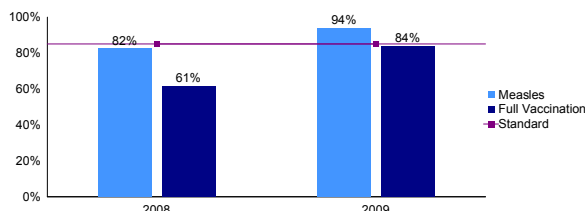
Access and Utilisation

No.	Indicator	Standard	Status
1	1 : 20,470	1 : <10,000	✗
26	< 50	< 50	✓
1.0	1 - 4	1 - 4	✓
24.92%			✓

Malaria

Indicator	Standard	Status
Is Act introduced as 1st line malaria treatment?	Yes	✓

Figure 4: Vaccination coverage



Malnutrition

Indicator	Standard	Status
Global Acute Malnutrition Rate (%)	< 5%	✗
Severe Acute Malnutrition Rate (%)	< 2%	✓
Prevalence of anaemia in children under five	< 20%	⚠
Prevalence of anaemia in women of reproductive age	< 20%	⚠
Average number of kilocalories per person per day	2100	✓

REPRO HEALTH

Maternal and Newborn Health

Indicator	Standard	Status
Coverage of complete antenatal care (4 or more visits)	105%	100% ✓
Proportion of deliveries attended by skilled personnel	36%	≥ 50% ⚠
Proportion of deliveries performed by caesarean section	0%	5 - 15% ✗
Proportion of low birth weight deliveries	2%	< 15% ✓

Family planning

Indicator	Standard	Status
Contraceptive prevalence rate	0%	≥ 30% ✗

Sexual and Gender-based Violence

Indicator	Standard	Status
Incidence of reported rape (/10,000/year)	0.00	
Prop. rape survivors who received PEP < 72h	100%	100% ✓
Prop. rape survivors who received ECP < 120h	100%	100% ✓
Prop. rape survivors who received STI < 2 wks	100%	100% ✓

Prevention

Indicator	Standard	Status
Condom distribution rate	0.00	> 0.5 ✗
Do appropriate IEC materials exist for PoCs?	Yes	Yes ✓
Are risk groups targeted with prevention programmes?	Yes	Yes ✓
Proportion of donated blood units screened for HIV	100%	100% ✓
PMTCT coverage	100%	100% ✓

Care and Treatment

Indicator	Standard	Status
Do PoCs have equal access to ART as host?	Yes	Yes ✓
Number of PoCs receiving ART	0	
Prop. HIV positive mothers receiving co-trimox	100%	100% ✓
Prop. HIV positive infants receiving co-trimox	100%	100% ✓

Water, Sanitation and Hygiene

Indicator	Standard	Status
Av quantity of potable water / person / day (litres)	12	> 20 ✗
No. of persons per usable water tap	189	< 80 ✗
No. of persons per drop-hole in communal latrine	20	≤ 20 ✓
Prop. of population living within 200m from water point	85%	100% ✓
Prop. of families with latrines	38%	100% ✗
Prop. families receiving >250g soap / person / month	83%	≥ 90% ⚠

Observations

Les données de nutrition sont celles de l'enquête nutritionnelle réalisée en 2008. Il n'y a pas eu d'enquête nutritionnelle en 2009 pour des raisons d'insécurité. Les données considérées dans ce rapport couvrent la période de janvier à novembre 2009. Deux campagnes de vaccination contre la rougeole (plus vitamine A) ont été réalisées au cours de l'année conjointement avec UNICEF et les partenaires.

Camp opened: 2005

Population: 18,171

Camp closed:

The source of population data in this report is:

HIS start date: Nov 2007

Origin of refugees:

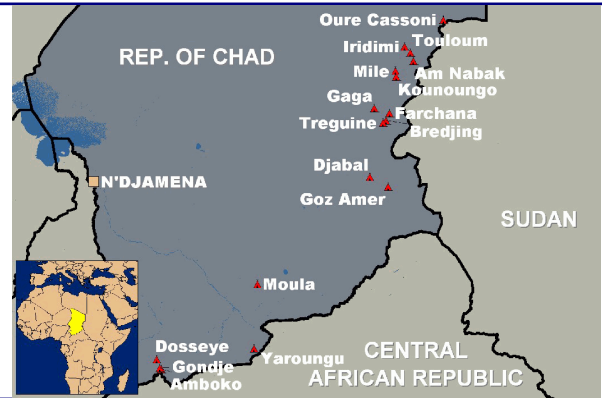
Sudan

Implementing partners:

Health/HIV: IMC

Nutrition: IMC

Watsan: AFRICARE



Public Health Status

Health Impact

Indicator	Standard	Status
Crude Mortality Rate (CMR) (/1000/month)	0.33	< 1.5
Under-five Mortality Rate (U5MR) (/1000/month)	1.03	< 3.0
Infant Mortality Rate (IMR) (/1000 livebirths)	17.4	< 60
Neonatal Mortality Rate (NNMR) (/1000 livebirths)	3.9	< 40

Figure 1: Crude and Under-five Mortality

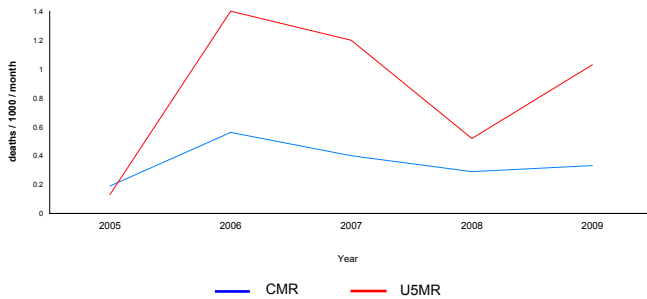


Figure 2: Crude Morbidity

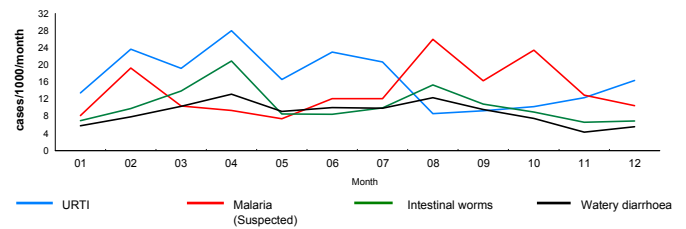
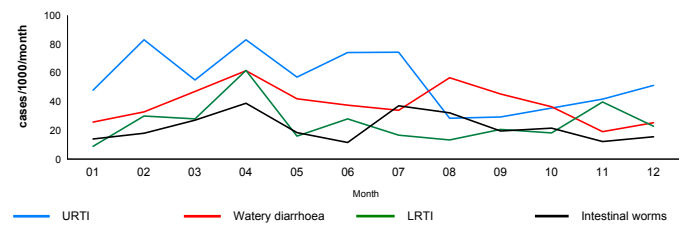


Figure 3: Under-five Morbidity



Public Health Programmes

Human Resources

No.	Indicator	Standard	Status
2	1 : 9,086	1 : <50,000	✓
6	1 : 3,028	1 : <10,000	✓
7	1 : 2,596	1 : <10,000	✓
3	1 : 6,057	1 : <10,000	✓
51	1 : 356	1 : 500-1,000	✗
38	1 : 478	1 : <500	✓

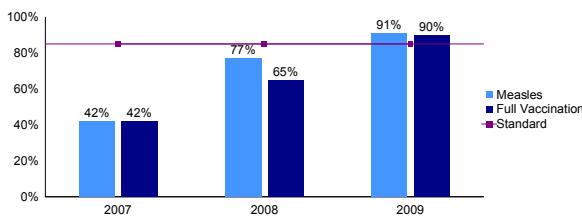
Access and Utilisation

No.	Indicator	Standard	Status
1	1 : 18,171	1 : <10,000	✗
31	< 50	< 50	✓
1.0	1 - 4	1 - 4	✓
12.84%			✓

Malaria

Indicator	Standard	Status
Is Act introduced as 1st line malaria treatment?	Yes	✓

Figure 4: Vaccination coverage



Malnutrition

Indicator	Standard	Status
Global Acute Malnutrition Rate (%)	13.1%	< 5% ✗
Severe Acute Malnutrition Rate (%)	0.8%	< 2% ✓
Prevalence of anaemia in children under five	30%	< 20% ⚠
Prevalence of anaemia in women of reproductive age	27%	< 20% ⚠
Average number of kilocalories per person per day	2247	2100 ✓

Maternal and Newborn Health

Indicator	Standard	Status
Coverage of complete antenatal care (4 or more visits)	82%	100% ✗
Proportion of deliveries attended by skilled personnel	35%	≥ 50% ⚠
Proportion of deliveries performed by caesarean section	1%	5 - 15% ✗
Proportion of low birth weight deliveries	6%	< 15% ✓

Family planning

Indicator	Standard	Status
Contraceptive prevalence rate	1%	≥ 30% ✗

Sexual and Gender-based Violence

Indicator	Standard	Status
Incidence of reported rape (/10,000/year)	1.61	
Prop. rape survivors who received PEP < 72h	0%	100% ✗
Prop. rape survivors who received ECP < 120h	100%	100% ✓
Prop. rape survivors who received STI < 2 wks	100%	100% ✓

Prevention

Indicator	Standard	Status
Condom distribution rate	0.02	> 0.5 ✗
Do appropriate IEC materials exist for PoCs?	Yes	Yes ✓
Are risk groups targeted with prevention programmes?	Yes	Yes ✓
Proportion of donated blood units screened for HIV	100%	100% ⚠
PMTCT coverage	76%	100% ✗

Care and Treatment

Indicator	Standard	Status
Do PoCs have equal access to ART as host?	Yes	Yes ✓
Number of PoCs receiving ART	0	
Prop. HIV positive mothers receiving co-trimox	100%	100% ⚠
Prop. HIV positive infants receiving co-trimox	100%	100% ⚠

Water, Sanitation and Hygiene

Indicator	Standard	Status
Av quantity of potable water / person / day (litres)	15	> 20 ✗
No. of persons per usable water tap	106	< 80 ✗
No. of persons per drop-hole in communal latrine	14	≤ 20 ✓
Prop. of population living within 200m from water point	85%	100% ⚠
Prop. of families with latrines	38%	100% ✗
Prop. families receiving >250g soap / person / month	83%	≥ 90% ⚠

Observations

Les données de nutrition sont celles de l'enquête nutritionnelle réalisée en 2008. Il n'y a pas eu d'enquête nutritionnelle en 2009 pour des raisons d'insécurité. Deux campagnes de vaccination contre la rougeole (plus vitamine A) ont été réalisées au cours de l'année conjointement avec UNICEF et les partenaires.

Camp opened: 2005

Population: 12,659

Camp closed:

The source of population data in this report is:

HIS start date: Nov 2007

Origin of refugees:

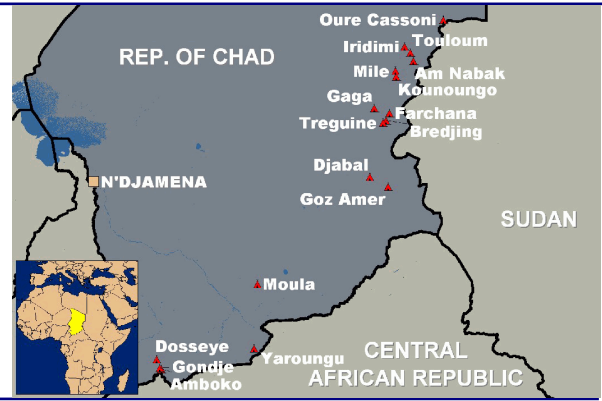
Centrafrique

Implementing partners:

Health/HIV: COOPI, Mentor Initiative

Nutrition: COOPI

Watsan: CARE



Public Health Status

Health Impact

Indicator	Standard	Status
Crude Mortality Rate (CMR) (/1000/month)	0.17	< 1.5
Under-five Mortality Rate (U5MR) (/1000/month)	0.96	< 3.0
Infant Mortality Rate (IMR) (/1000 livebirths)	23.3	< 60
Neonatal Mortality Rate (NNMR) (/1000 livebirths)	0.0	< 40

Figure 1: Crude and Under-five Mortality

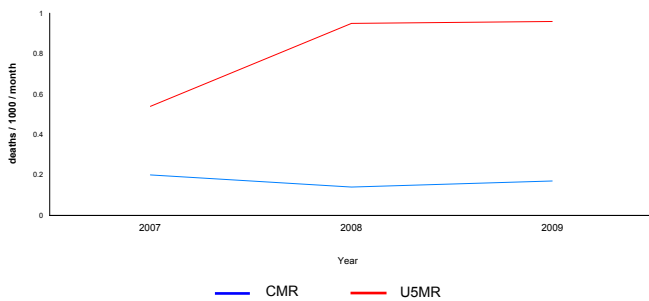


Figure 2: Crude Morbidity

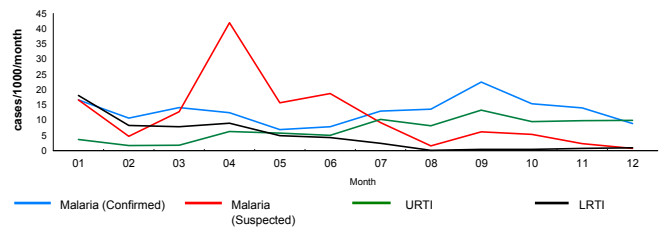
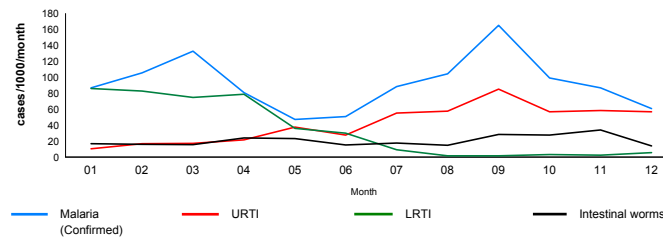


Figure 3: Under-five Morbidity



Public Health Programmes

Human Resources

Indicator	Standard	Status
No. of Medical Doctors	1 : 12,659	1 : <50,000
No. of Clinical Consultants	6	1 : <10,000
No. of Nurses (qualified)	7	1 : <10,000
No. of MCH staff / Midwives	2	1 : <10,000
No. of Community Health Workers (CHW)	12	1 : 500-1,000
No. of Hygiene Promoters	24	1 : <500

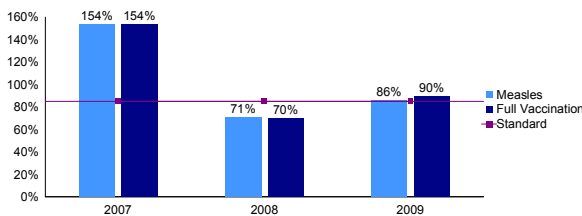
Access and Utilisation

Indicator	Standard	Status
No. of health facilities	1	1 : 12,659
No. of consultations per trained clinician per day	21	< 50
Health Utilization Rate (new visits/person/year)	1.0	1 - 4
Proportion of consultations by host population	0.17%	

Malaria

Is Act introduced as 1st line malaria treatment?	Yes	Yes
--	-----	-----

Figure 4: Vaccination coverage



Malnutrition

Indicator	Standard	Status
Global Acute Malnutrition Rate (%)	3.8%	< 5%
Severe Acute Malnutrition Rate (%)	1.1%	< 2%
Prevalence of anaemia in children under five	< 20%	< 20%
Prevalence of anaemia in women of reproductive age	< 20%	< 20%
Average number of kilocalories per person per day	1200	2100

Maternal and Newborn Health

Indicator	Standard	Status
Coverage of complete antenatal care (4 or more visits)	97%	100%
Proportion of deliveries attended by skilled personnel	94%	≥ 50%
Proportion of deliveries performed by caesarean section	0%	5 - 15%
Proportion of low birth weight deliveries	1%	< 15%

Family planning

Contraceptive prevalence rate	1%	≥ 30%
-------------------------------	----	-------

Sexual and Gender-based Violence

Indicator	Standard	Status
Incidence of reported rape (/10,000/year)	0.00	
Prop. rape survivors who received PEP < 72h	100%	100%
Prop. rape survivors who received ECP < 120h	100%	100%
Prop. rape survivors who received STI < 2 wks	100%	100%

Prevention

Indicator	Standard	Status
Condom distribution rate	0.39	> 0.5
Do appropriate IEC materials exist for PoCs?	Yes	Yes
Are risk groups targeted with prevention programmes?	Yes	Yes
Proportion of donated blood units screened for HIV	100%	100%
PMTCT coverage	73%	100%

Care and Treatment

Indicator	Standard	Status
Do PoCs have equal access to ART as host?	Yes	Yes
Number of PoCs receiving ART	8	
Prop. HIV positive mothers receiving co-trimox	100%	100%
Prop. HIV positive infants receiving co-trimox	80%	100%

Water, Sanitation and Hygiene

Indicator	Standard	Status
Av quantity of potable water / person / day (litres)	23	> 20
No. of persons per usable water tap	529	< 80
No. of persons per drop-hole in communal latrine	21	≤ 20
Prop. of population living within 200m from water point	100%	100%
Prop. of families with latrines	100%	100%
Prop. families receiving >250g soap / person / month	100%	≥ 90%

Observations

Les données de nutrition sont celles de l'enquete nutritionnelle réalisée en 2008. Il n'y a pas eu d'enquete nutritionnelle en 2009..Le personnel de sante est celui du centre de sant  tatique de Beureh. L'enquete nutritionnelle de ACF r  alis  e en 2008 n'a pas pris en compte l'anemie. Le meme medecin partage son temps entre Gondje et Dosseye.

Camp opened: 2004

Population: 21,429

Camp closed:

The source of population data in this report is:

HIS start date: Nov 2007

Origin of refugees:

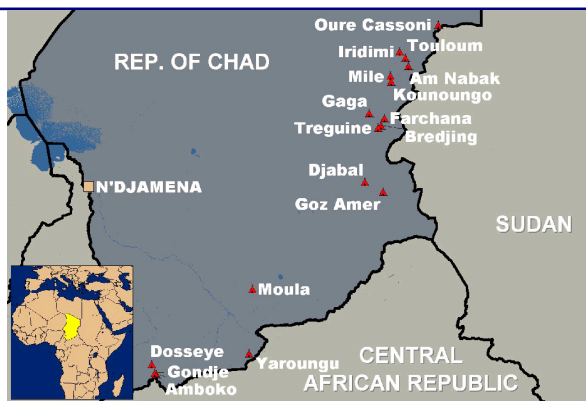
Sudan

Implementing partners:

Health/HIV: COOPI

Nutrition: COOPI

Watsan: OXFAM Intermon



Public Health Status

Health Impact

Indicator	Standard	Status
Crude Mortality Rate (CMR) (/1000/month)	0.20	< 1.5
Under-five Mortality Rate (U5MR) (/1000/month)	0.61	< 3.0
Infant Mortality Rate (IMR) (/1000 livebirths)	17.3	< 60
Neonatal Mortality Rate (NNMR) (/1000 livebirths)	1.1	< 40

Figure 1: Crude and Under-five Mortality

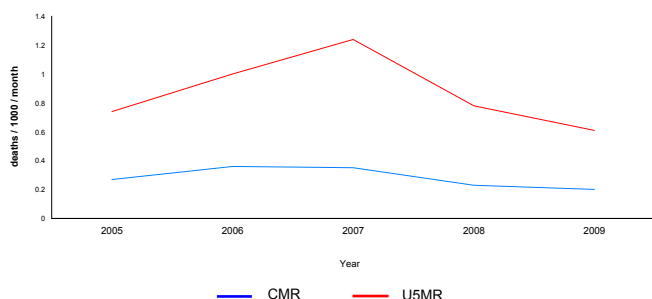


Figure 2: Crude Morbidity

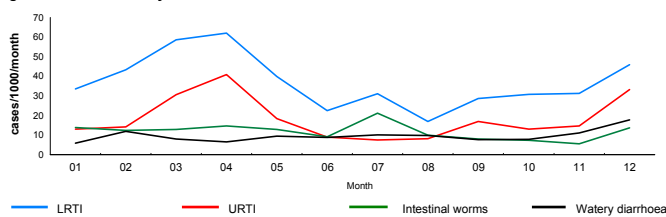
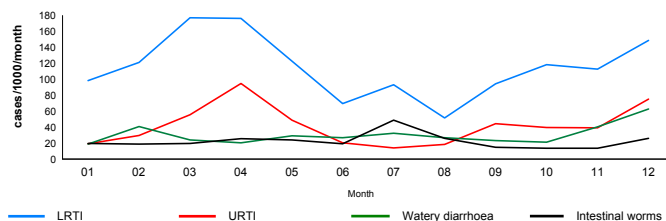


Figure 3: Under-five Morbidity



Public Health Programmes

Human Resources

No.	Indicator	Standard	Status
2	1 : 10,714	1 : <50,000	✓
18	1 : 1,190	1 : <10,000	✓
17	1 : 1,261	1 : <10,000	✓
3	1 : 7,143	1 : <10,000	✓
33	1 : 649	1 : 500-1,000	✓
36	1 : 595	1 : <500	⚠

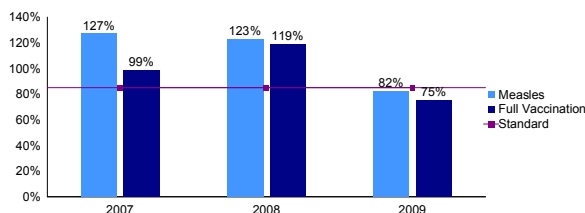
Access and Utilisation

No.	Indicator	Standard	Status
1	1 : 21,429	1 : <10,000	✗
31	< 50	< 50	✓
2.0	1 - 4	1 - 4	✓
12.24%			✓

Malaria

Indicator	Standard	Status
Is Act introduced as 1st line malaria treatment?	Yes	✓

Figure 4: Vaccination coverage



Malnutrition

Indicator	Standard	Status
Global Acute Malnutrition Rate (%)	8.6%	< 5% ✗
Severe Acute Malnutrition Rate (%)	0.7%	< 2% ✓
Prevalence of anaemia in children under five	26%	< 20% ⚠
Prevalence of anaemia in women of reproductive age	18%	< 20% ✓
Average number of kilocalories per person per day	2100	2247 ✓

Maternal and Newborn Health

Indicator	Standard	Status
Coverage of complete antenatal care (4 or more visits)	46%	100% ✗
Proportion of deliveries attended by skilled personnel	85%	≥ 50% ✓
Proportion of deliveries performed by caesarean section	0%	5 - 15% ✗
Proportion of low birth weight deliveries	2%	< 15% ✓

Family planning

Indicator	Standard	Status
Contraceptive prevalence rate	1%	≥ 30% ✗

Sexual and Gender-based Violence

Indicator	Standard	Status
Incidence of reported rape (/10,000/year)	0.91	
Prop. rape survivors who received PEP < 72h	0%	100% ✗
Prop. rape survivors who received ECP < 120h	0%	100% ✗
Prop. rape survivors who received STI < 2 wks	0%	100% ✗

Prevention

Indicator	Standard	Status
Condom distribution rate	0.01	> 0.5 ✗
Do appropriate IEC materials exist for PoCs?	Yes	Yes ✓
Are risk groups targeted with prevention programmes?	Yes	Yes ✓
Proportion of donated blood units screened for HIV	100%	100% ✓
PMTCT coverage	73%	100% ✗

Care and Treatment

Indicator	Standard	Status
Do PoCs have equal access to ART as host?	Yes	Yes ✓
Number of PoCs receiving ART	0	
Prop. HIV positive mothers receiving co-trimox	100%	100% ✓
Prop. HIV positive infants receiving co-trimox	100%	100% ✓

Water, Sanitation and Hygiene

Indicator	Standard	Status
Av quantity of potable water / person / day (litres)	14	> 20 ✗
No. of persons per usable water tap	110	< 80 ✗
No. of persons per drop-hole in communal latrine	12	≤ 20 ✓
Prop. of population living within 200m from water point	85%	100% ✗
Prop. of families with latrines	38%	100% ✗
Prop. families receiving >250g soap / person / month	83%	≥ 90% ⚠

Observations

Les données de nutrition sont celles de l'enquête nutritionnelle réalisée en 2008. Il n'y a pas eu d'enquête nutritionnelle en 2009 pour des raisons d'insécurité. Deux campagnes de vaccination contre la rougeole (plus vitamine A) ont été réalisées au cours de l'année conjointement avec UNICEF et les partenaires.

Camp opened: 2004

Population: 18,644

Camp closed:

The source of population data in this report is:

HIS start date: Nov 2007

Origin of refugees:

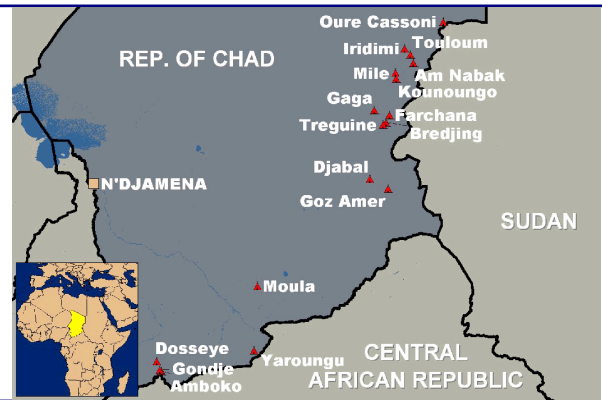
Sudan

Implementing partners:

Health/HIV: IMC

Nutrition: IMC

Watsan: SECADEV



Public Health Status

Health Impact

Indicator	Standard	Status
Crude Mortality Rate (CMR) (/1000/month)	0.24	< 1.5
Under-five Mortality Rate (U5MR) (/1000/month)	0.81	< 3.0
Infant Mortality Rate (IMR) (/1000 livebirths)	25.6	< 60
Neonatal Mortality Rate (NNMR) (/1000 livebirths)	14.4	< 40

Figure 1: Crude and Under-five Mortality

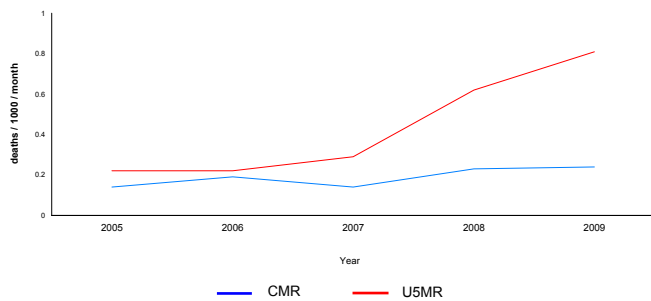


Figure 2: Crude Morbidity

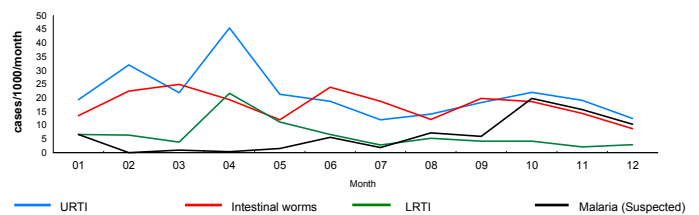
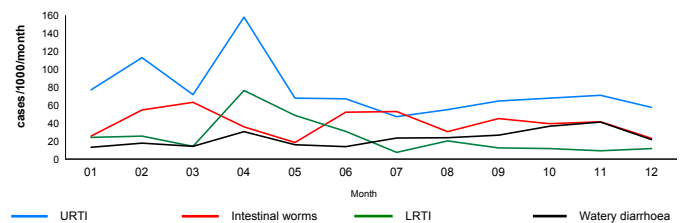


Figure 3: Under-five Morbidity



Public Health Programmes

Human Resources

No.	Indicator	Standard	Status
1	1 : 18,644	1 : <50,000	✓
4	1 : 4,661	1 : <10,000	✓
3	1 : 6,215	1 : <10,000	✓
1	1 : 18,644	1 : <10,000	✗
19	1 : 981	1 : 500-1,000	✓
25	1 : 746	1 : <500	⚠

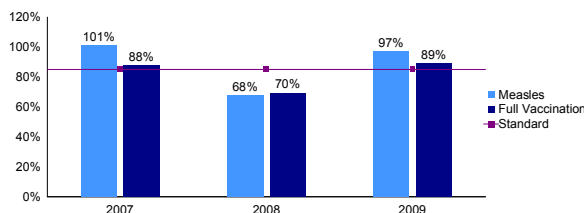
Access and Utilisation

No.	Indicator	Standard	Status
1	1 : 18,644	1 : <10,000	✗
37	< 50	< 50	✓
1.0	1 - 4	1 - 4	✓
17.93%			✓

Malaria

Indicator	Standard	Status
Is Act introduced as 1st line malaria treatment?	Yes	Yes ✓

Figure 4: Vaccination coverage



Malnutrition

Indicator	Standard	Status
Global Acute Malnutrition Rate (%)	12.1%	< 5% ✗
Severe Acute Malnutrition Rate (%)	0.4%	< 2% ✓
Prevalence of anaemia in children under five	36%	< 20% ⚠
Prevalence of anaemia in women of reproductive age	32%	< 20% ⚠
Average number of kilocalories per person per day	2247	2100 ✓

Maternal and Newborn Health

Indicator	Standard	Status
Coverage of complete antenatal care (4 or more visits)	83%	100% ✗
Proportion of deliveries attended by skilled personnel	46%	≥ 50% ⚠
Proportion of deliveries performed by caesarean section	1%	5 - 15% ✗
Proportion of low birth weight deliveries	4%	< 15% ✓

Family planning

Indicator	Standard	Status
Contraceptive prevalence rate	0%	≥ 30% ✗

Sexual and Gender-based Violence

Indicator	Standard	Status
Incidence of reported rape (/10,000/year)	0.00	
Prop. rape survivors who received PEP < 72h	100%	100% ✓
Prop. rape survivors who received ECP < 120h	100%	100% ✓
Prop. rape survivors who received STI < 2 wks	100%	100% ✓

Prevention

Indicator	Standard	Status
Condom distribution rate	0.02	> 0.5 ✗
Do appropriate IEC materials exist for PoCs?	Yes	Yes ✓
Are risk groups targeted with prevention programmes?	Yes	Yes ✓
Proportion of donated blood units screened for HIV	100%	100% ✓
PMTCT coverage		100% ✓

Care and Treatment

Indicator	Standard	Status
Do PoCs have equal access to ART as host?	Yes	Yes ✓
Number of PoCs receiving ART	0	
Prop. HIV positive mothers receiving co-trimox	100%	100% ✓
Prop. HIV positive infants receiving co-trimox	100%	100% ✓

Water, Sanitation and Hygiene

Indicator	Standard	Status
Av quantity of potable water / person / day (litres)	13	> 20 ✗
No. of persons per usable water tap	139	< 80 ✗
No. of persons per drop-hole in communal latrine	17	≤ 20 ✓
Prop. of population living within 200m from water point	85%	100% ⚠
Prop. of families with latrines	38%	100% ✗
Prop. families receiving >250g soap / person / month	83%	≥ 90% ⚠

Observations

Les données de nutrition sont celles de l'enquete nutritionnelle réalisée en 2008. Il n'y a pas eu d'enquete nutritionnelle en 2009 pour des raisons d'insécurité. Deux campagnes de vaccination contre la rougeole (plus vitamine A) ont été réalisées au cours de l'année conjointement avec UNICEF et les partenaires.

Camp opened: 2004

Population: 16,976

Camp closed:

The source of population data in this report is:

HIS start date: Nov 2007

Origin of refugees:

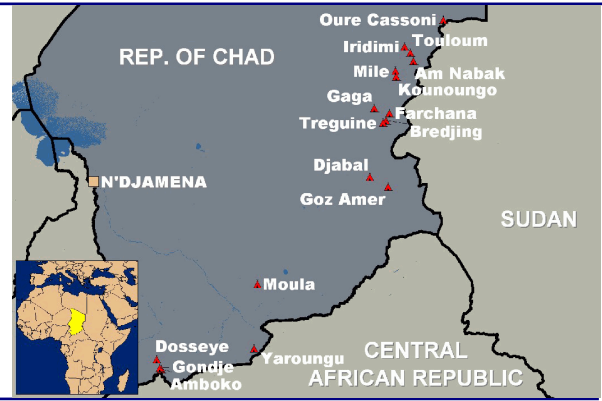
Sudan

Implementing partners:

Health/HIV: IMC

Nutrition: IMC

Watsan: SECADEV



Public Health Status

Health Impact

Indicator	Standard	Status
Crude Mortality Rate (CMR) (/1000/month)	0.17	< 1.5
Under-five Mortality Rate (U5MR) (/1000/month)	0.59	< 3.0
Infant Mortality Rate (IMR) (/1000 livebirths)	36.4	< 60
Neonatal Mortality Rate (NNMR) (/1000 livebirths)	0.0	< 40

Figure 1: Crude and Under-five Mortality

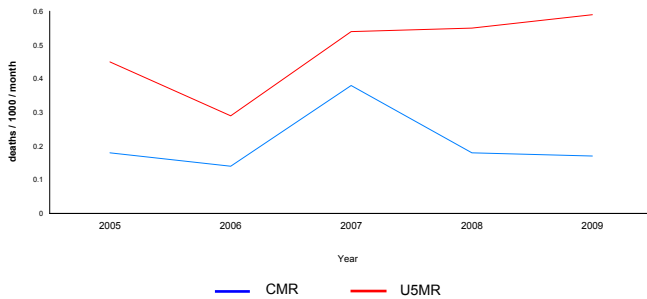


Figure 2: Crude Morbidity

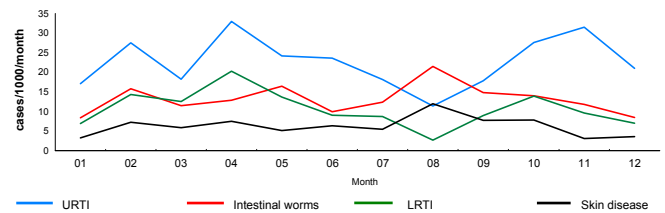
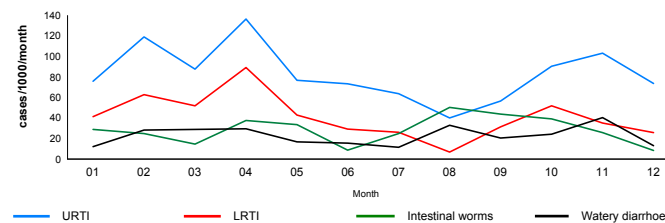


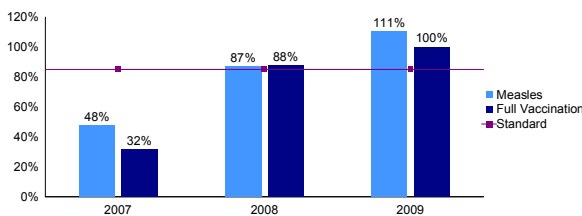
Figure 3: Under-five Morbidity



Public Health Programmes

Indicator	Standard	Status
Human Resources		
No. of Medical Doctors	1 : 16,976	1 : <50,000
No. of Clinical Consultants	5 : 3,395	1 : <10,000
No. of Nurses (qualified)	4 : 4,244	1 : <10,000
No. of MCH staff / Midwives	1 : 16,976	1 : <10,000
No. of Community Health Workers (CHW)	22 : 772	1 : 500-1,000
No. of Hygiene Promoters	28 : 606	1 : <500
Access and Utilisation		
No. of health facilities	1 : 16,976	1 : <10,000
No. of consultations per trained clinician per day	29	< 50
Health Utilization Rate (new visits/person/year)	1.0	1 - 4
Proportion of consultations by host population	17.78%	
Malaria		
Is Act introduced as 1st line malaria treatment?	Yes	Yes

Figure 4: Vaccination coverage



Malnutrition

Indicator	Standard	Status
Global Acute Malnutrition Rate (%)	9.8%	< 5%
Severe Acute Malnutrition Rate (%)	0.4%	< 2%
Prevalence of anaemia in children under five	34%	< 20%
Prevalence of anaemia in women of reproductive age	26%	< 20%
Average number of kilocalories per person per day	2247	2100

Indicator	Standard	Status
Maternal and Newborn Health		
Coverage of complete antenatal care (4 or more visits)	91%	100%
Proportion of deliveries attended by skilled personnel	65%	≥ 50%
Proportion of deliveries performed by caesarean section	2%	5 - 15%
Proportion of low birth weight deliveries	0%	< 15%

Family planning

Indicator	Standard	Status
Contraceptive prevalence rate	0%	≥ 30%

Sexual and Gender-based Violence

Indicator	Standard	Status
Incidence of reported rape (/10,000/year)	0.59	
Prop. rape survivors who received PEP < 72h	200%	100%
Prop. rape survivors who received ECP < 120h	200%	100%
Prop. rape survivors who received STI < 2 wks	200%	100%

Prevention

Indicator	Standard	Status
Condom distribution rate	0.03	> 0.5
Do appropriate IEC materials exist for PoCs?	Yes	Yes
Are risk groups targeted with prevention programmes?	Yes	Yes
Proportion of donated blood units screened for HIV	100%	100%
PMTCT coverage		100%

Care and Treatment

Indicator	Standard	Status
Do PoCs have equal access to ART as host?	Yes	Yes
Number of PoCs receiving ART	0	
Prop. HIV positive mothers receiving co-trimox		100%
Prop. HIV positive infants receiving co-trimox		100%

Water, Sanitation and Hygiene

Indicator	Standard	Status
Av quantity of potable water / person / day (litres)	15	> 20
No. of persons per usable water tap	150	< 80
No. of persons per drop-hole in communal latrine	15	≤ 20
Prop. of population living within 200m from water point	85%	100%
Prop. of families with latrines	38%	100%
Prop. families receiving >250g soap / person / month	83%	≥ 90%

Observations

Les données de nutrition sont celles de l'enquête nutritionnelle réalisée en 2008. Il n'y a pas eu d'enquête nutritionnelle en 2009 pour des raisons d'insécurité. Deux campagnes de vaccination contre la rougeole (plus vitamine A) ont été réalisées au cours de l'année conjointement avec UNICEF et les partenaires.

Camp opened: 2008

Population: 5,555

Camp closed:

The source of population data in this report is:

HIS start date: Dec 2008

Origin of refugees:

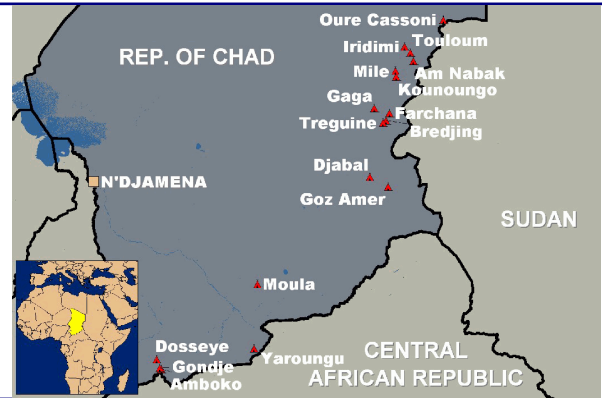
Centrafrique

Implementing partners:

Health/HIV: ACT-FLMI, Mentor Initiative

Nutrition: ACT-FLM

Watsan: COOPI, LRRD



Public Health Status

Health Impact

Indicator	Standard	Status
Crude Mortality Rate (CMR) (/1000/month)	0.41	< 1.5
Under-five Mortality Rate (U5MR) (/1000/month)	1.09	< 3.0
Infant Mortality Rate (IMR) (/1000 livebirths)	22.1	< 60
Neonatal Mortality Rate (NNMR) (/1000 livebirths)	0.0	< 40

Figure 1: Crude and Under-five Mortality

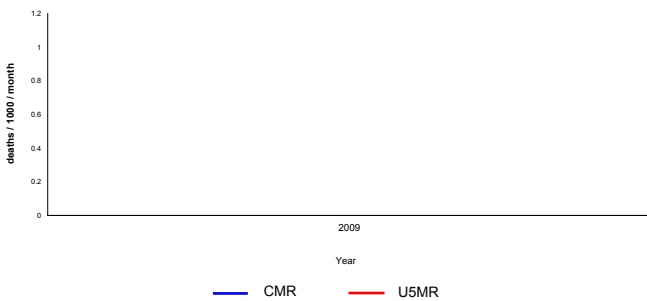


Figure 2: Crude Morbidity

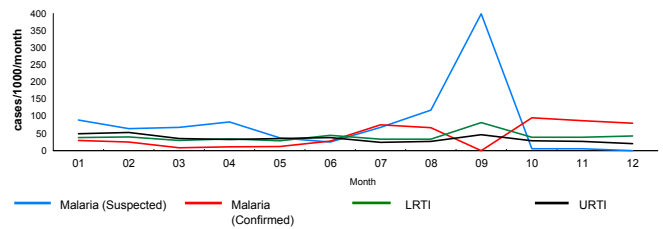
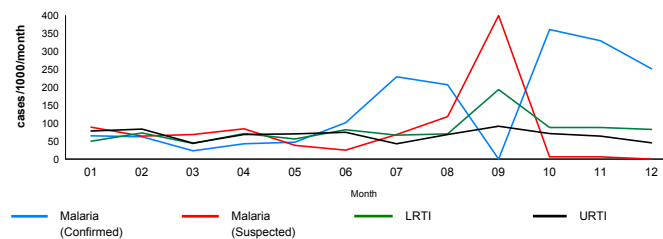


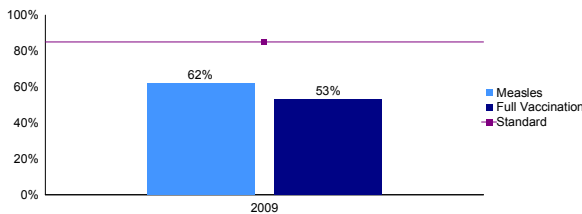
Figure 3: Under-five Morbidity



Public Health Programmes

Indicator	Nº	Indicator	Standard	Status
Human Resources				
No. of Medical Doctors	1	1 : 5,555	1 : <50,000	✓
No. of Clinical Consultants	6	1 : 926	1 : <10,000	✓
No. of Nurses (qualified)	6	1 : 926	1 : <10,000	✓
No. of MCH staff / Midwives	1	1 : 5,555	1 : <10,000	✓
No. of Community Health Workers (CHW)	6	1 : 926	1 : 500-1,000	✓
No. of Hygiene Promoters	15	1 : 370	1 : <500	✓
Access and Utilisation				
No. of health facilities	1	1 : 5,555	1 : <10,000	✓
No. of consultations per trained clinician per day		34	< 50	✓
Health Utilization Rate (new visits/person/year)		3.0	1 - 4	✓
Proportion of consultations by host population		6.61%		✓
Malaria				
Is Act introduced as 1st line malaria treatment?		Yes	Yes	✓

Figure 4: Vaccination coverage



Indicator	Value	Standard	Status
Malnutrition			
Global Acute Malnutrition Rate (%)	5.4%	< 5%	✗
Severe Acute Malnutrition Rate (%)	0.8%	< 2%	✓
Prevalence of anaemia in children under five		< 20%	?
Prevalence of anaemia in women of reproductive age		< 20%	?
Average number of kilocalories per person per day	1200	2100	✗

Indicator	Standard	Status
Maternal and Newborn Health		
Coverage of complete antenatal care (4 or more visits)	63%	100%
Proportion of deliveries attended by skilled personnel	88%	≥ 50%
Proportion of deliveries performed by caesarean section	2%	5 - 15%
Proportion of low birth weight deliveries	2%	< 15%
Family planning		
Contraceptive prevalence rate	1%	≥ 30%
Sexual and Gender-based Violence		
Incidence of reported rape (/10,000/year)	0.00	
Prop. rape survivors who received PEP < 72h		100%
Prop. rape survivors who received ECP < 120h		100%
Prop. rape survivors who received STI < 2 wks		100%

Indicator	Standard	Status
Prevention		
Condom distribution rate	0.15	> 0.5
Do appropriate IEC materials exist for PoCs?	Yes	Yes
Are risk groups targeted with prevention programmes?	Yes	Yes
Proportion of donated blood units screened for HIV		100%
PMTCT coverage	0%	100%
Care and Treatment		
Do PoCs have equal access to ART as host?	Yes	Yes
Number of PoCs receiving ART	2	
Prop. HIV positive mothers receiving co-trimox		100%
Prop. HIV positive infants receiving co-trimox		100%

Indicator	Standard	Status
Water, Sanitation and Hygiene		
Av quantity of potable water / person / day (litres)	21	> 20
No. of persons per usable water tap	388	< 80
No. of persons per drop-hole in communal latrine	19	≤ 20
Prop. of population living within 200m from water point	100%	100%
Prop. of families with latrines	100%	100%
Prop. families receiving >250g soap / person / month	%	≥ 90%

Observations

Les données de nutrition sont celles de l'enquete nutritionnelle réalisée en 2008. Il n'y a pas eu d'enquete nutritionnelle en 2009..L'enquete nutritionnelle de ACF réalisé en 2008 n'a pas pris en compte l'anemie.

Camp opened: 2004

Population: 27,927

Camp closed:

The source of population data in this report is:

HIS start date: Nov 2007

Origin of refugees:

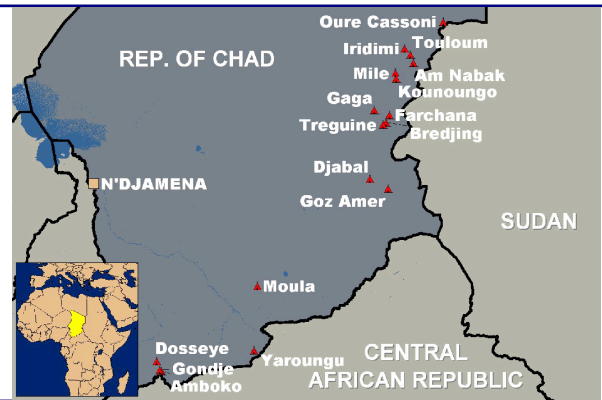
Sudan

Implementing partners:

Health/HIV: IRC

Nutrition: ACTED

Watsan: IRC



Public Health Status

Health Impact

Indicator	Standard	Status
Crude Mortality Rate (CMR) (/1000/month)	0.22	< 1.5
Under-five Mortality Rate (U5MR) (/1000/month)	0.54	< 3.0
Infant Mortality Rate (IMR) (/1000 livebirths)	17.5	< 60
Neonatal Mortality Rate (NNMR) (/1000 livebirths)	9.8	< 40

Figure 1: Crude and Under-five Mortality

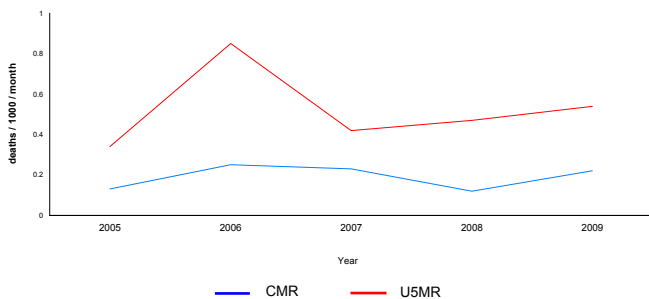


Figure 2: Crude Morbidity

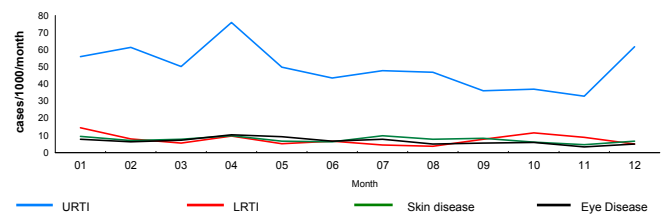
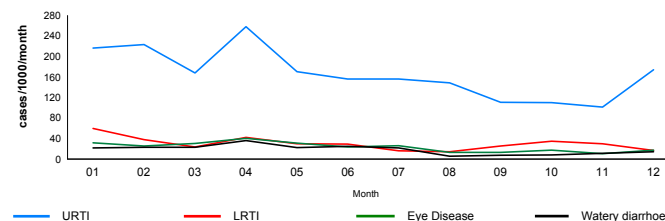


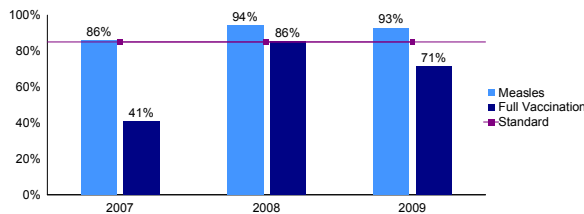
Figure 3: Under-five Morbidity



Public Health Programmes

Indicator	Standard	Status
Human Resources		
No. of Medical Doctors	1 : 13,964	1 : <50,000
No. of Clinical Consultants	1 : 2,793	1 : <10,000
No. of Nurses (qualified)	1 : 3,103	1 : <10,000
No. of MCH staff / Midwives	1 : 6,982	1 : <10,000
No. of Community Health Workers (CHW)	1 : 821	1 : 500-1,000
No. of Hygiene Promoters	1 : 482	1 : <500
Access and Utilisation		
No. of health facilities	1 : 13,964	1 : <10,000
No. of consultations per trained clinician per day	29	< 50
Health Utilization Rate (new visits/person/year)	1.0	1 - 4
Proportion of consultations by host population	16.98%	
Malaria		
Is Act introduced as 1st line malaria treatment?	Yes	Yes

Figure 4: Vaccination coverage



Malnutrition

Indicator	Standard	Status
Global Acute Malnutrition Rate (%)	13.8%	< 5%
Severe Acute Malnutrition Rate (%)	0.7%	< 2%
Prevalence of anaemia in children under five	38%	< 20%
Prevalence of anaemia in women of reproductive age	33%	< 20%
Average number of kilocalories per person per day	2247	2100

Indicator	Standard	Status
Maternal and Newborn Health		
Coverage of complete antenatal care (4 or more visits)	93%	100%
Proportion of deliveries attended by skilled personnel	95%	≥ 50%
Proportion of deliveries performed by caesarean section	0%	5 - 15%
Proportion of low birth weight deliveries	6%	< 15%
Family planning		
Contraceptive prevalence rate	0%	≥ 30%
Sexual and Gender-based Violence		
Incidence of reported rape (/10,000/year)	0.00	
Prop. rape survivors who received PEP < 72h		100%
Prop. rape survivors who received ECP < 120h		100%
Prop. rape survivors who received STI < 2 wks		100%

Indicator	Standard	Status
Prevention		
Condom distribution rate	0.00	> 0.5
Do appropriate IEC materials exist for PoCs?	Yes	Yes
Are risk groups targeted with prevention programmes?	Yes	Yes
Proportion of donated blood units screened for HIV		100%
PMTCT coverage		100%
Care and Treatment		
Do PoCs have equal access to ART as host?	Yes	Yes
Number of PoCs receiving ART	0	
Prop. HIV positive mothers receiving co-trimox		100%
Prop. HIV positive infants receiving co-trimox		100%

Water, Sanitation and Hygiene

Indicator	Standard	Status
Av quantity of potable water / person / day (litres)	6	> 20
No. of persons per usable water tap	194	< 80
No. of persons per drop-hole in communal latrine	16	≤ 20
Prop. of population living within 200m from water point	85%	100%
Prop. of families with latrines	38%	100%
Prop. families receiving >250g soap / person / month	83%	≥ 90%

Observations

Les données de nutrition sont celles de l'enquete nutritionnelle réalisée en 2008. Il n'y a pas eu d'enquete nutritionnelle en 2009 pour des raisons d'insécurité. Deux campagnes de vaccination contre la rougeole (plus vitamine A) ont été réalisées au cours de l'année conjointement avec UNICEF et les partenaires.

Camp opened: 2004

Population: 16,853

Camp closed:

The source of population data in this report is:

HIS start date: Nov 2007

Origin of refugees:

Sudan

Implementing partners:

Health/HIV: FISCR, CRT
 Nutrition: FISCR, CRT
 Watsan: FISCR, CRT



Public Health Status

Health Impact

Indicator	Standard	Status
Crude Mortality Rate (CMR) (/1000/month)	0.60	< 1.5
Under-five Mortality Rate (U5MR) (/1000/month)	1.74	< 3.0
Infant Mortality Rate (IMR) (/1000 livebirths)	23.1	< 60
Neonatal Mortality Rate (NNMR) (/1000 livebirths)	5.1	< 40

Figure 1: Crude and Under-five Mortality

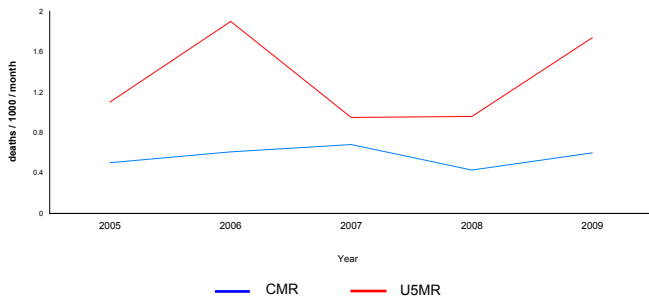


Figure 2: Crude Morbidity

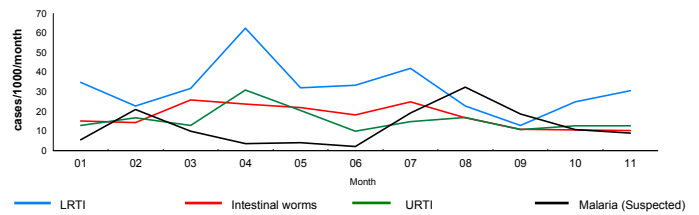
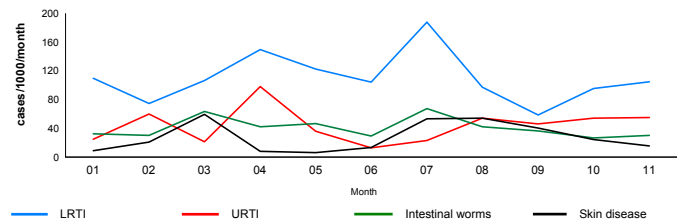


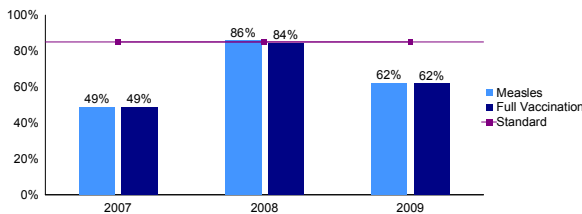
Figure 3: Under-five Morbidity



Public Health Programmes

Indicator	Nº	Indicator	Standard	Status
Human Resources				
No. of Medical Doctors	1	1 : 16,853	1 : <50,000	✓
No. of Clinical Consultants	16	1 : 1,053	1 : <10,000	✓
No. of Nurses (qualified)	15	1 : 1,124	1 : <10,000	✓
No. of MCH staff / Midwives	2	1 : 8,426	1 : <10,000	✓
No. of Community Health Workers (CHW)	25	1 : 674	1 : 500-1,000	✓
No. of Hygiene Promoters	27	1 : 624	1 : <500	⚠
Access and Utilisation				
No. of health facilities	1	1 : 16,853	1 : <10,000	✗
No. of consultations per trained clinician per day		30	< 50	✓
Health Utilization Rate (new visits/person/year)		2.0	1 - 4	✓
Proportion of consultations by host population		18.76%		✓
Malaria				
Is Act introduced as 1st line malaria treatment?		Yes	Yes	✓

Figure 4: Vaccination coverage



Indicator	Standard	Status
Maternal and Newborn Health		
Coverage of complete antenatal care (4 or more visits)	74%	100%
Proportion of deliveries attended by skilled personnel	99%	≥ 50%
Proportion of deliveries performed by caesarean section	0%	5 - 15%
Proportion of low birth weight deliveries	1%	< 15%
Family planning		
Contraceptive prevalence rate	0%	≥ 30%
Sexual and Gender-based Violence		
Incidence of reported rape (/10,000/year)	0.00	
Prop. rape survivors who received PEP < 72h		100%
Prop. rape survivors who received ECP < 120h		100%
Prop. rape survivors who received STI < 2 wks		100%
Prevention		
Condom distribution rate	0.05	> 0.5
Do appropriate IEC materials exist for PoCs?	Yes	Yes
Are risk groups targeted with prevention programmes?	Yes	Yes
Proportion of donated blood units screened for HIV		100%
PMTCT coverage		100%
Care and Treatment		
Do PoCs have equal access to ART as host?	Yes	Yes
Number of PoCs receiving ART	0	
Prop. HIV positive mothers receiving co-trimox		100%
Prop. HIV positive infants receiving co-trimox		100%
Water, Sanitation and Hygiene		
Av quantity of potable water / person / day (litres)	18	> 20
No. of persons per usable water tap	112	< 80
No. of persons per drop-hole in communal latrine	9	≤ 20
Prop. of population living within 200m from water point	85%	100%
Prop. of families with latrines	38%	100%
Prop. families receiving >250g soap / person / month	83%	≥ 90%

Malnutrition

Indicator	Value	Standard	Status
Global Acute Malnutrition Rate (%)	11.4%	< 5%	✗
Severe Acute Malnutrition Rate (%)	0.7%	< 2%	✓
Prevalence of anaemia in children under five	34%	< 20%	⚠
Prevalence of anaemia in women of reproductive age	31%	< 20%	⚠
Average number of kilocalories per person per day	2247	2100	✓

Observations

Les données de nutrition sont celles de l'enquete nutritionnelle réalisée en 2008. Il n'y a pas eu d'enquete nutritionnelle en 2009 pour des raisons d'insécurité. Les données considérées dans ce rapport couvrent la période de janvier à novembre 2009. Deux campagnes de vaccination contre la rougeole (plus vitamine A) ont été réalisées au cours de l'année conjointement avec UNICEF et les partenaires.

Camp opened: 2003

Population: 13,690

Camp closed:

The source of population data in this report is:

HIS start date: Jan 2008

Origin of refugees:

Centrafrique

Implementing partners:

Health/HIV: COOPI
 Nutrition: COOPI
 Watsan: COOPI, LRRD



Public Health Status

Health Impact

Indicator	Standard	Status
Crude Mortality Rate (CMR) (/1000/month)	0.21	< 1.5
Under-five Mortality Rate (U5MR) (/1000/month)	0.71	< 3.0
Infant Mortality Rate (IMR) (/1000 livebirths)	16.1	< 60
Neonatal Mortality Rate (NNMR) (/1000 livebirths)	8.1	< 40

Figure 1: Crude and Under-five Mortality

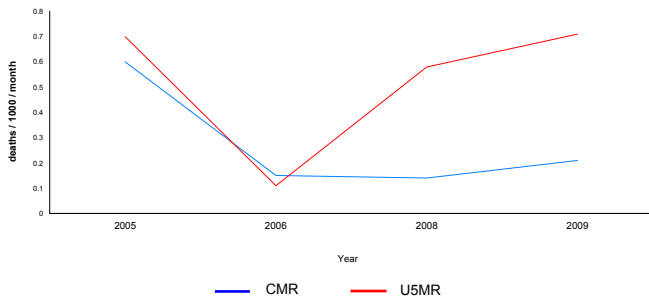


Figure 2: Crude Morbidity

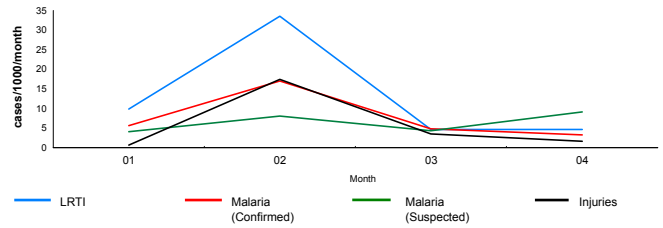
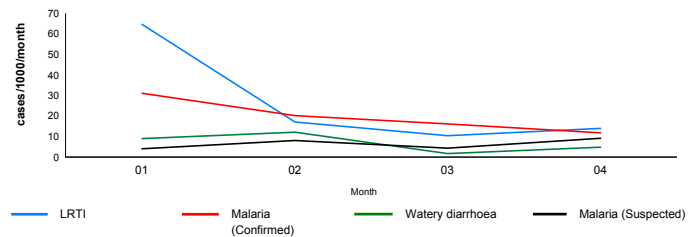


Figure 3: Under-five Morbidity



Public Health Programmes

Human Resources

Indicator	Standard	Status
No. of Medical Doctors	1 : 13,690	1 : <50,000
No. of Clinical Consultants	3	1 : <10,000
No. of Nurses (qualified)	3	1 : <10,000
No. of MCH staff / Midwives	0	1 : <10,000
No. of Community Health Workers (CHW)	13	1 : 500-1,000
No. of Hygiene Promoters	22	1 : <500

Access and Utilisation

Indicator	Standard	Status
No. of health facilities	1 : 13,690	1 : <10,000
No. of consultations per trained clinician per day	28	< 50
Health Utilization Rate (new visits/person/year)	0.0	1 - 4
Proportion of consultations by host population	17.44%	

Malaria

Indicator	Standard	Status
Is Act introduced as 1st line malaria treatment?	Yes	Yes

Maternal and Newborn Health

Indicator	Standard	Status
Coverage of complete antenatal care (4 or more visits)	27%	100%
Proportion of deliveries attended by skilled personnel	94%	≥ 50%
Proportion of deliveries performed by caesarean section	0%	5 - 15%
Proportion of low birth weight deliveries	8%	< 15%

Family planning

Indicator	Standard	Status
Contraceptive prevalence rate	0%	≥ 30%

Sexual and Gender-based Violence

Indicator	Standard	Status
Incidence of reported rape (/10,000/year)	0.00	
Prop. rape survivors who received PEP < 72h	100%	
Prop. rape survivors who received ECP < 120h	100%	
Prop. rape survivors who received STI < 2 wks	100%	

Prevention

Indicator	Standard	Status
Condom distribution rate	0.07	> 0.5
Do appropriate IEC materials exist for PoCs?	Yes	Yes
Are risk groups targeted with prevention programmes?	Yes	Yes
Proportion of donated blood units screened for HIV	100%	
PMTCT coverage	0%	100%

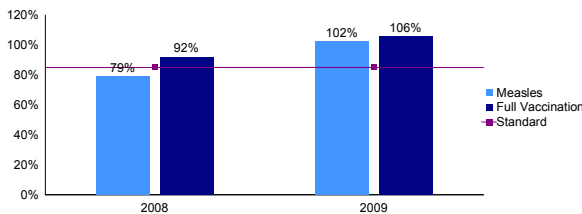
Care and Treatment

Indicator	Standard	Status
Do PoCs have equal access to ART as host?	Yes	Yes
Number of PoCs receiving ART	18	
Prop. HIV positive mothers receiving co-trimox	100%	
Prop. HIV positive infants receiving co-trimox	100%	

Water, Sanitation and Hygiene

Indicator	Standard	Status
Av quantity of potable water / person / day (litres)	15	> 20
No. of persons per usable water tap	627	< 80
No. of persons per drop-hole in communal latrine	9	≤ 20
Prop. of population living within 200m from water point	100%	100%
Prop. of families with latrines	100%	100%
Prop. families receiving >250g soap / person / month	%	≥ 90%

Figure 4: Vaccination coverage



Malnutrition

Indicator	Standard	Status
Global Acute Malnutrition Rate (%)	6.2%	< 5%
Severe Acute Malnutrition Rate (%)	0.7%	< 2%
Prevalence of anaemia in children under five	< 20%	
Prevalence of anaemia in women of reproductive age	< 20%	
Average number of kilocalories per person per day	1200	2100

Observations

Les données de nutrition sont celles de l'enquete nutritionnelle réalisée en 2008. Il n'y a pas eu d'enquete nutritionnelle en 2009. Les données considérées dans ce rapport couvrent la période de janvier à avril 2009. L'enquete nutritionnelle de ACF réalisé en 2008 n'a pas pris en compte l'anemie.