

# Inter-agency update



**37K**

Refugee population  
planned for assistance



**\$USD 11.7M**

Total financial  
requirements 2025/26



**9**

RRP partners

## People reached <sup>1</sup>



**4.8K | 13%**

people reached by RRP by end of September

**37K**

Target population



**3,415 | 18%** individuals supported in accessing **protection services**



- | **0%** children provided with **child protection services**



**168 | 18%** children and youth supported with **education programming**



**380 | 46%** individuals received assistance for **basic needs**



**535 | 12%** individuals benefitted from **livelihoods and economic inclusion interventions**



**282 | 2%** individuals supported in accessing **health services**



**24 | 1%** individuals participated in **MHPSS services and activities**

## Current funding level <sup>2</sup>



**\$USD 1.5 M | 24%**

Funds received by end of September

**\$USD 6.4 M**

Financial requirements

|  |  | Received |       | Gap |
|--|--|----------|-------|-----|
|  | Basic needs                            | USD\$    | 87 K  | 69% |
|  | Education                              | USD\$    | 9 K   | 96% |
|  | Protection                             | USD\$    | 974 K | 70% |
|  | Health                                 |          | 109 K | 79% |
|  | Livelihoods & Socio-economic Inclusion | USD\$    | 367K  | 83% |

<sup>1</sup> Data source: The information presented in this document is based on inputs from RRP partners on activities implemented under the RRP, as reported in the Activity Info platform. **Activities are on-going in all sectors, but may not all have been reported yet.**

<sup>2</sup> Data source: Regional Refugee Funding Tracker as of 03 November 2025 - [LINK](#)



## Partners involved in the RRP

e-Governance Academy | Estonia Human Rights Centre | Estonian Refugee Council | Mondo | USF | Ukrainian Center | UN International Organization for Migration | UN World Health Organization | United Nations High Commissioner for Refugees

## Check out useful resources

### REFUGEE RESPONSE PLAN 25-26



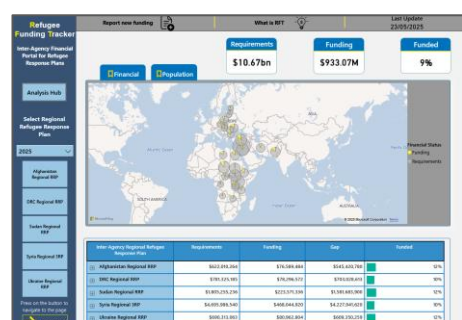
[\[LINK\]](#)

### SOCIO-ECONOMIC INSIGHTS SURVEY - 2024



[\[LINK\]](#)

### REGIONAL REFUGEE FUNDING TRACKER



[\[LINK\]](#)

Produced by:  
Inter Agency Unit  
Estonia, Latvia, Lithuania | UNHCR

For more information, please contact,  
Nayana Bose | [bose@unhcr.org](mailto:bose@unhcr.org)  
Carmen Garcia | [garciar@unhcr.org](mailto:garciar@unhcr.org)