

Inter-agency update



48K*

Refugee population
planned for assistance



\$USD 11M

Total financial
requirements 2025/26



8

RRP partners

* This is the revised figure from the initial 54K planned for in the regional RRP; current figure as of September 2025 is 31K.

People reached ¹



3.5 K | 7%

people reached by RRP by end of September

48K

Target population



342 | 20% individuals supported in accessing **protection services**



- | **0%** children provided with **child protection services**



218 | 33% children and youth supported with **education programming**



1,427 | 42% individuals received assistance for **basic needs**



1,228 | 37% individuals benefitted from **livelihoods and economic inclusion interventions**



- | **0%** individuals supported in accessing **health services**



314 | 100% individuals participated in **MHPSS services and activities**

Current funding level ²



\$USD 1 M | 18%

Funds received by end of September

\$USD 5.8 M

Financial requirements



Basic needs

	Received	Gap
Basic needs	USD\$ 180 K	82%
Education	USD\$ -	100%
Protection	USD\$ 363 K	84%
Health	-	100%
Livelihoods & Socio-economic Inclusion	USD\$ 485 K	74%
Not yet allocated	USD\$ 23 K	



Education



Protection



Health



Livelihoods & Socio-economic Inclusion

Not yet allocated

¹ Data source: The information presented in this document is based on inputs from RRP partners on activities implemented under the RRP, as reported in the ActivityInfo platform. **Activities are on-going in all sectors, but may not all have been reported yet.**

² Data source: Regional Refugee Funding Tracker as of 03 November 2025 - [LINK](#)



Partners involved in the RRP

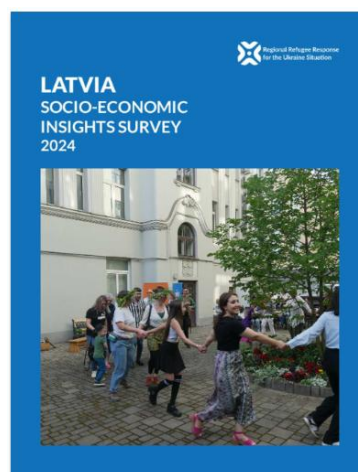
Center for Public Policy PROVIDUS | Creative Ideas | Gribu palīdzēt bēgļiem / I Want to Help Refugees | Order of Malta Relief Organization | Perlyna | Shelter Safe House | UN International Organization for Migration | United Nations High Commissioner for Refugees

Check out useful resources

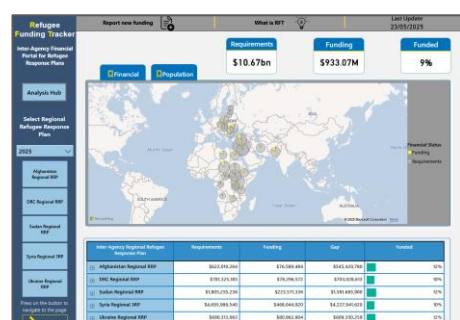
REFUGEE RESPONSE PLAN 25-26


[\[LINK\]](#)

SOCIO-ECONOMIC INSIGHTS SURVEY - 2024


[\[LINK\]](#)

REGIONAL REFUGEE FUNDING TRACKER


[\[LINK\]](#)

Produced by:
Inter Agency Unit
Estonia, Latvia, Lithuania | UNHCR

For more information, please contact,
Nayana Bose | bose@unhcr.org
Carmen Garcia | garciar@unhcr.org