

ANNEX-B
BILL OF QUANTITIES

PROPOSED SUPPLY AND INSTALLATION OF PREFABS IN FIA /IMMIGRATION IN DISTRICT CHAMAN

S.No	DESCRIPTION	UOM	QTY
1	<p>Prefabricated Toilets (One set of 4 Toilets with water tank 600 Gallon and septic tank 6x5x5)(Refer to Drawings)</p>	SETS	5
	<p>Civil work for toilets:</p> <ul style="list-style-type: none"> • One feet height PCC 1;2;4 flooring 250 sft • Ceramic tiles on Flooring • Septic tank with bricks wall 9" thick size (L-6',W-5',D-5') • 6 " main pipe with one manhole 2'x2' with connected 4" pipe • works for sewerage line • Water tank 600 Gallon with base of concrete block center filled with soil H -5 feet 		
	<p>Prefab Toilet</p> <ul style="list-style-type: none"> • 50 mm thick wall and roof will be One Side Slop with 9", Structure Height: 9.' --- Internal Clear Height: 8.5' <p>Door . Size: 2.5'x6'. prefab Door Lock. Ventilator (1.5' x1.5') Aluminum Commode & Washbasin & accessories English Type ceramic (square 2') in one toilet for disable person Indian type ceramic (2.5' x 1.5') three toilets Wash Basin 2' x 2' ceramic Muslim Shower & single Tap</p>		

ANNEX-B
BILL OF QUANTITIES

PROPOSED SUPPLY AND INSTALLATION OF PREFABS IN FIA /IMMIGRATION IN DISTRICT CHAMAN

	Mirror (22" x 18"), Soap , Towel & tissue holder with good quality steel PPRC double fitting (Hot & Cold Separate) 4" PPRC pipe, P-trab for commode and washbasin for 4 toilets Exhaust Fan 10 " Electric wire and 12 watt light with switch.		
2.	Corrugated Sheet sun shed (80 x 20 And 50 x 30 ') Drawings Excavation for pipe 2' x2', 6-inch G.I pipe 16 Gauge installed in 2x2x2 feet concrete 1:2:4 with Hight of 11 feet 9" provision of soil and watering and compacting Truss of 1.5"x1.5 pipe in Long span & 1.5" L-iron on shortspan fixed with J-bolts/rubber and 18 Gauge corrugated G.I sheet. Painting with red oxide and two coat oil paint (Pipe, frame and G.I sheet)	SFT	3000
3.	Furniture's Steel chairs welded with existing pipe for sitting of IVAS receiving office 4' back ,2x2' sitting 4 standing legs of 2 inch square/circular pipe,sitting and back sheet 5 mm thick. Colored with oil paint.	NO	20
4.	Installation of Water dispensers 35 Gallon Nargas -point with all requirements of base with concrete and pipe connections with water outpipe	NO	1

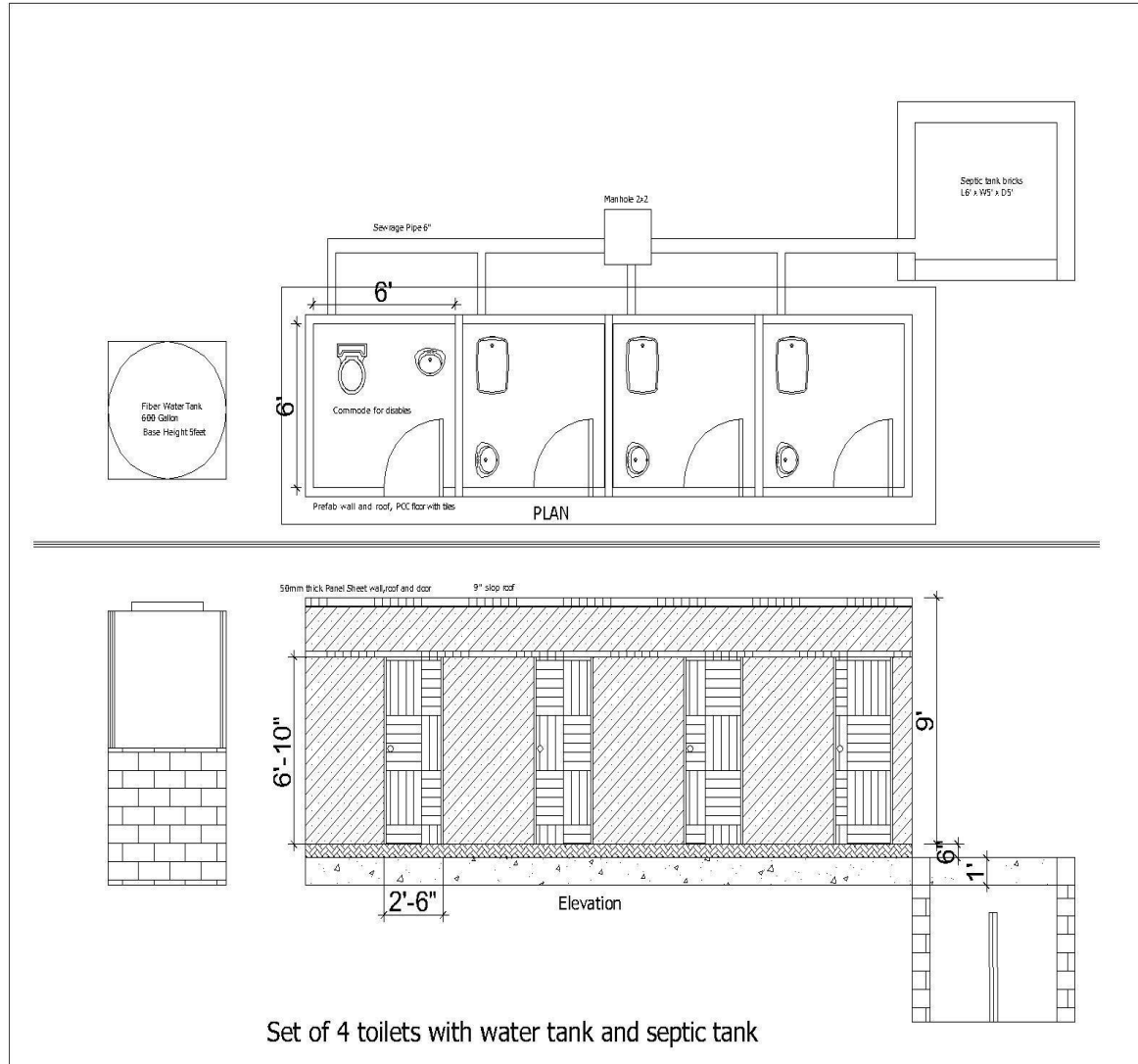
ANNEX-B
BILL OF QUANTITIES

PROPOSED SUPPLY AND INSTALLATION OF PREFABS IN FIA /IMMIGRATION IN DISTRICT CHAMAN

	including 150 Gallon tank on block base for two Dispensers		
--	---	--	--

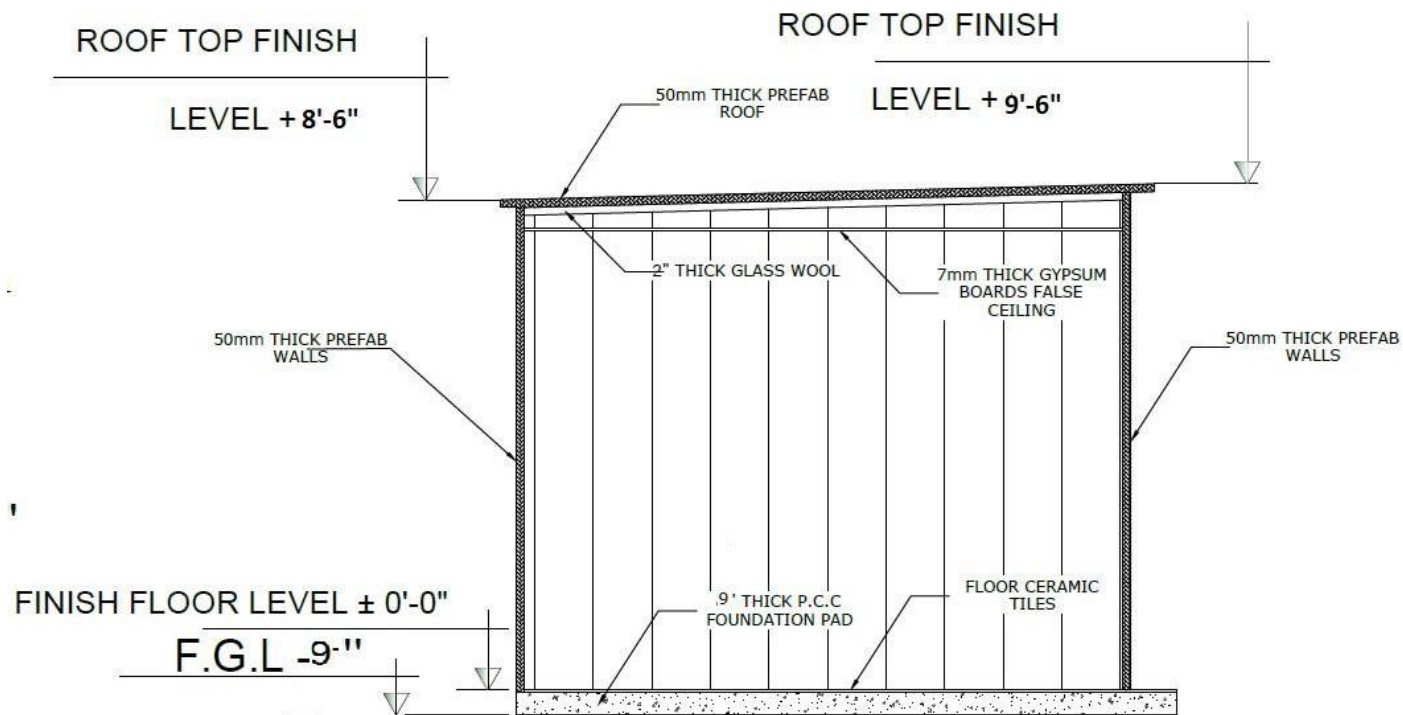
ANNEX-B BILL OF QUANTITIES

PROPOSED SUPPLY AND INSTALLATION OF PREFABS IN FIA /IMMIGRATION IN DISTRICT CHAMAN



ANNEX-B
BILL OF QUANTITIES

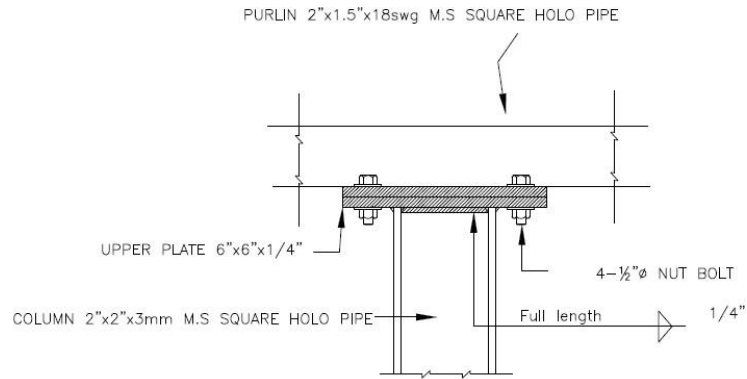
PROPOSED SUPPLY AND INSTALLATION OF PREFABS IN FIA /IMMIGRATION IN DISTRICT CHAMAN



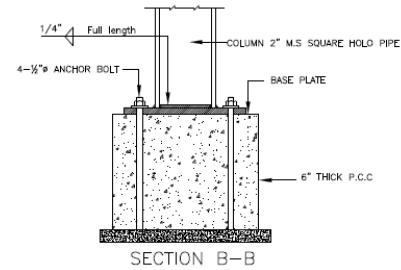
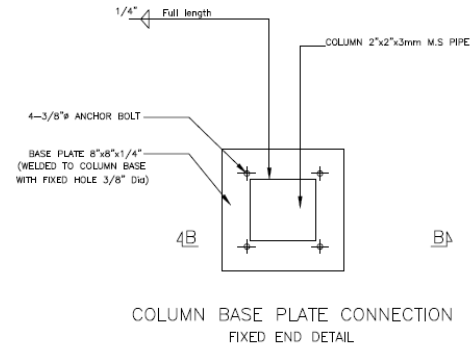
SECTION

ANNEX-B BILL OF QUANTITIES

PROPOSED SUPPLY AND INSTALLATION OF PREFABS IN FIA /IMMIGRATION IN DISTRICT CHAMAN



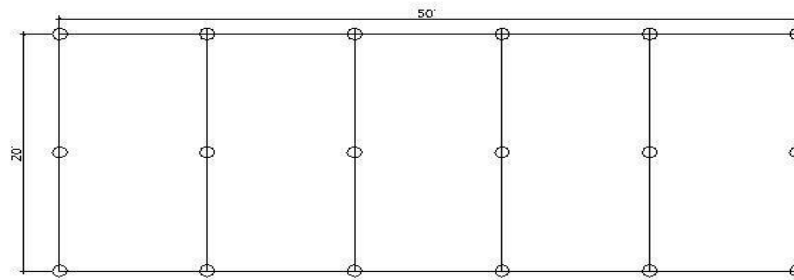
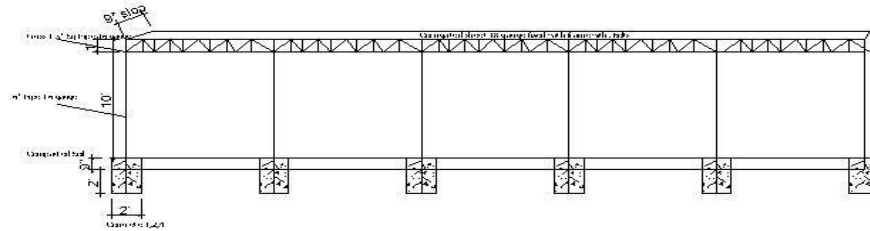
UPPER BASE PLATE CONNECTION DETAILS



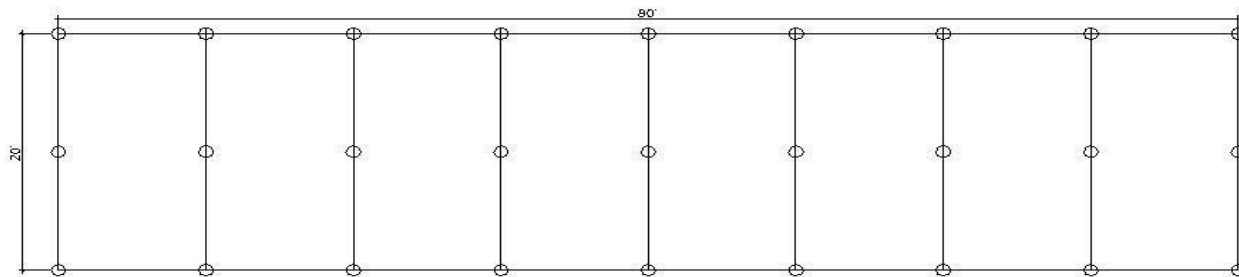
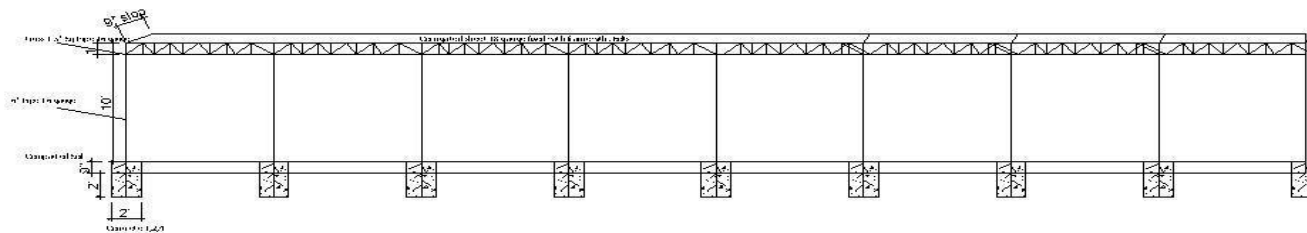
COLUMN BASE PLATE CONNECTION DETAILS

ANNEX-B BILL OF QUANTITIES

PROPOSED SUPPLY AND INSTALLATION OF PREFABS IN FIA /IMMIGRATION IN DISTRICT CHAMAN



E J Corriente sheet 1/3 sheet



E J Corriente sheet 1/3 sheet