

ANNEX-B (BILL OF QUANTITIES AND DRAWINGS)

S.NO	DESCRIPTION	QTY	UNIT
	Given the works are maintenance/improvements works, a site visit is <u>Mandatory</u> in order for the contractors to assess and discuss the scope of works.		
1	Wooden/PVC Cabin WALLS 9 Cubical (5 PCM nadra , 1 IRIS and 3 in Validation compound)		
1.10	Supply and fix timber size 4" x 2" as vertical & vertical frames/stands spaced at 1m c/c fix 70mm thick polystyrene foam or equivalent between the the timber. Fixing 6mm thickness PVC sheet white colored boards fixed on both sides of the timber frames including the cost of Deco painting where required as per insturction	2510	SFT
1.20	Provide and fix 1.5" (38 mm) thick pressed veneered Commercial wood 3 ply door 3.5'x 7' wide C/C shutters fully flushed with First class wood veneering on all faces and sides fixed over partal wood cavited core and frame work of not less than 4" (100mm) wide strips all round with approved iron hinges and locks and including the cost of brass hinges and approved locks and deco paint on door and frame as per instruction.	9	Nos.
1.30	5 mm Clear Glass with SRF sheet 6 Micron thick 5' x 6 'in PVC 4" frame for windows as per insturction compelte in all respect.	9	No
1.40	12 mm Clear Glass with SRF sheet 6 Micron thick 3' x 3 'in aluminum frame windows	1	No
1.50	Providing and fixing thermophore light weight ceiling supported by frame as per instruction complete in all respected	720	Sft
1.60	Light circuit concealed/open wiring with length upto 75 ft. (25m) from distribution board to point/switch with 3x2.5 Sq.mm PVC insulated single core copper conductor Pakistan Cables, Pioneer, Newage or approved equivalent cables for offices/multi storeyed buildings.	20	P/Point
1.61	Wiring of 5 Amps. socket outlet with 4 sq.mm PVC insulated single core copper conductor cable including 3/4" (20mm) dia. PVC conduit, 8.7sq.mm (10SWG) copper wire as earth continuity conductor and wiring accessories such as bends, elbows, junction boxes etc	10	P/Point

S.NO	DESCRIPTION	QTY	UNIT
1.62	Supply and installing 8 Gang with switches board fan regulator and soccket with high quality Platic as approved .	10	No
1.63	Supply and install combined 2/3 pin 5 Amps, 250 Volt switch socket unit including plastic box to be fixed recessed in wall. supply and instalation of 3 pin 15 Amp switch socket unit	10	No
1.64	Supply and install Energy Saver electric bulbs 25W Philips energy saver with holder in ceiling fixed durring slab concreting as per approved	20	Each
1.65	Supply and installation of braket Fan -Pak fan as approved	9	No
2	FURNITURE		
2.10	Fabricate and fix office table in veneered timber) size 60" long x 36" width x 30" height complete with a drawer with a handle for keeping files, and a sliding shelf for a computer keyboard.	9	No
2.11	Purchase and delivery of office chairs high and durable quality Plastic revolving with size 1.5x1.5x2' LxWxH.	9	No
2.12	Purchase and delivery of visiting chairs wooden with size 1.5x1.5x2' LxWxH sitting and back foam of 3" with high-quality fabric as per instruction	25	No
3	Validation and night refugee area front covering with PVC walls(wooden frame work)		
3.10	Supply and fix timber size 4" x 2" as vertical & vertical frames/stands spaced at 1m c/c fix 70mm thick polystyrene foam or equivalent between the the timber. Fixing 6mm thickness PVC sheet white colored boards fixed on both sides of the timber frames including the cost of Deco painting where required as per insturction	840	SFT
3.20	Providing and fixing 1.5" (38 mm) thick pressed veneered Commercial wood 3 ply door 5'x 7' (double opening 2.5'x 7')wide C/C shutters fully flushed with First class wood veneering on all faces and sides fixed over partal wood cavited core and frame work of not less than 4" (100mm) wide strips all round with approved iron hinges and locks and including the cost of brass hinges and approved locks and deco paint on door and frame as per instruction.	2	Nos.
3.30	5 mm Clear Glass with SRF sheet 6 Micron thick 5' x 6 'in PVC 4" frame for windows as per insturction compelte in all respect.	6	No

S.NO	DESCRIPTION	QTY	UNIT
4	New construction for Fuel storage room near Generator room		
4.10	Excavation in foundation of buildings and bridges including layout, dressing, refilling around structures with excavated earth, watering & ramming lead upto 100 ft. (30m) & lift upto 5 ft. (1.5m)	176	CFT
4.20	Providing and laying cement concrete using approved coarse sand and crushed aggregate 3/4" (19mm) & down gauge in foundation including leveling, compacting and curing. P.C.C 1:4:8 in Foundation	44	CFT
4.30	Providing and laying 1:2:4 cement concrete using approved coarse sand and crushed aggregate 3/4" (19mm.) and down gauge in plinth band, door band and roof band of required shape or section including formwork and its removal, compacting and curing in basement and ground floor but excluding the cost of reinforcement. 1:2:4 in lintal only above door an windows and 6" concrete on roof beam area for girders	132	CFT
4.40	Providing and laying first class solid burnt brick masonry(Brick Strength:1800psi-2000psi) including scaffolding, raking out joints and curing in foundation and sub structure/Basement i/c cost of testing		
A	Bricks work in foundation 18"	176	CFT
B	Bricks work upto Plinth level 9"	330	CFT
4.50	Supply and fixing 8"x6" garders, using 4ft space grader to Garder including fixing, cutting, and placement in reinforcement position including cost of with 2 coats of red oxide and 2 coat of oil paint, 60 RFT	180	KG

S.NO	DESCRIPTION	QTY	UNIT
4.60	Supply and fixing T iron Cutting, Placement and fixing in reinforcement position including cost of with 2 coats of red oxide and 2 coat of oil paint, 150 RFT	450	KG
4.70	Providing and fixing steel iron windows and Ventilator (16 gauge) including cost of with 2 coats of red oxide and 2 coat of oil paint, or any approved section as approved by including windows fittings , 5mm tinted local glass, lugs, cutting holes complete in all respect	28	SFT
4.80	Providing and fixing iron grills with square bars of 3/8" size as per approved design including welding all sides of the section at the junction and fixing with sunk iron screws, painting with two coats of red oxide paint and fixing in masonry/concrete or wood	28	SFT
4.81	Supply and fixing 1st class Solid burnt Bricks 1'x6" Roof Tile	168	NO.
4.82	providing and laying 1.5mm Plastic and concrete of ratio 1:2;4 of 2.5 inch using 9mm aggregate as per insturction	168	SFT
4.83	3/4 inch (19mm) thick cement plaster using Coarse Sand on walls and columns in basement, plinth and ground floor including making edges, corners and curing.	680	SFT
4.84	Providing and fixing 8mm thick steel door including frame with approved iron hinges including the cost of painting with red oxide and two coat of deco paint and approved main lock	40	SFT
4.85	Distemping with Berger, ICI or equivalent synthetic polyvinly emulsion finish of approved shade in two or more coats in ceiling , walls over and including the coast of priming coat including preparation of surface viz dusting sand papering or rubbing with pumic stone, filling cracks or holes if any removing blister or the instruction .Applying weather resistant paint coating such as ICI weather shield, Berger weather exterior walls including supplying all materials, scaffolding and removal of debri Complete in all respect	440	SFT

S.NO	DESCRIPTION	QTY	UNIT
4.86	Applying weather resistant paint coating such as ICI weather shield, Berger weather coat or equivalent to interior or exterior walls or ceiling including supplying all labour, materials, scaffoldings and removal of debris etc. @ atleast 3.50 litre per 10 Sq.m.	240	SFT
4.87	Light Circuit concealed/open wiring length up to 80ft from distribution board to point/switch with 3*2.5 sq.mm PVC insulated single core copper conductor Pakistan Cables, poineer, Newage or approved equivalent Cables including ceiling fan & exhaust fan point Complete in all respect Concealed wiring with 3/4" (20 mm) dia. PVC conduit and accessories such as bends, elbows, junction Boxes	2	Points
4.88	Supply and install Energy Saver electric bulbs 25W Philips energy saver with holder in ceiling fixed during slab concreting as per approved	4	Each
4.89	Supply and installing 8 Gang with switches board fan regulator and socket with high quality Plastic as approved .	1	No
4.90	Supply and install 10" (250 mm) sweep exhaust fan including plastic louvers Complete in all respect	1	NOS
5	<u>Main VRC Building/Remodeling</u>		
5.10	Provide and Fix with mesh wire/wire netting/chicken mesh 1.41 mm 18 BWG gauge expanded metal 1"x1" (25mm x 25mm) mesh as reinforcement to the roof ceiling for protecting tiles from falling Fixing with existing structure by welding, Rovel Bolts thought Hooks shown in drawings including the cost of cutting, wastage, fixing, overlaps, rust protected spray and and binding wire as per instruction provided. (Fixing Mesh wire as false ceiling with Hooks welded)	25000	SFT

S.NO	DESCRIPTION	QTY	UNIT
5.20	Supply & Fixing of Heavy Doors (7'x4') Ms sheet 8mm thick with a strong frame of L-iron 2 inch x 2inch x 8 mm enough strong to hold the weight and easy openable fixed in the brick wall providing extra reinforcement in existing wall including the cost of 2 feet 2 -Handle, heavy door lock access from inside only and two coat of red Oxide and two coat odourless oil paint as per engineer in charge	1	No
5.30	Supply & Fixing of Heavy Sliding window (5'x6') Ms sheet 8mm thick with a strong frame of L-iron 2 inch x 2inch x 8 mm enough strong to hold the weight and easily openable fixed in the brick wall providing extra reinforcement in the existing wall including the cost of 2 feet 1 -Handle inside and Lock access from inside only ,of red Oxide and two coat odourless oil paint as per engineer in charge	2	No
5.40	Supply & Fix Keil wood door (7'x4') x50 thick including the wooden frame fixed extra reinforcement in existing wall including the cost of the brass handle and automatic numeric lock access from inside only as per engineer in charge	2	No
5.50	Excavation in foundation of buildings and bridges including layout, dressing, refilling around structures with excavated earth, watering & ramming lead upto 100 ft. (30m) & lift upto 5 ft. (1.5m)	128	CFT
5.60	Provide and lay cement concrete using approved coarse sand and crushed aggregate 3/4" (19mm) & down gauge in foundation including leveling, compacting and curing. P.C.C 1:4:8 in Foundation	16	CFT
5.70	Providing and laying 1:2:4 cement concrete using approved coarse sand and crushed aggregate 3/4" (19mm.) and down gauge in plinth band, door band and roof band of required shape or section including formwork and its removal, compacting and curing in basement and ground floor but excluding the cost of reinforcement. 1:2:4 in lintal only above door and windows and 6" concrete on roof beam area for girders	64	CFT

S.NO	DESCRIPTION	QTY	UNIT
5.80	Provide and lay first class solid burnt brick masonry(Brick Strength:1800psi-2000psi) including scaffolding, raking out joints and curing in foundation and sub structure/Basement i/c cost of testing		

S.NO	DESCRIPTION	QTY	UNIT
a	Bricks work in foundation 18"	48	CFT
b	Bricks work upto Plinth level 9"	312	CFT
5.81	Provide and fix steel iron windows and Ventilator (16 gauge) including cost of with 2 coats of red oxide and 2 coat of oil paint, or any approved section as approved by including windows fittings , 5mm tinted local glass, lugs, cutting holes complete in all respect	8	SFT
5.82	3/4 inch (19mm) thick cement plaster using Coarse Sand on walls and columns in basement, plinth and ground floor including making edges, corners and curing.	832	SFT
5.83	Light Circuit concealed/open wiring length up to 80ft from distribution board to point/switch with 3*2.5 sq.mm PVC insulated single core copper conductor Pakistan Cables, poineer, Newage or approved equivalent Cables icluding ceilling fan & exhaust fan point Complete in all respectConcealed wiring with 3/4" (20 mm) dia. PVC conduit and accessories such as bends, elbows, junction Boxes	2	Points
5.84	Supply and install Energy Saver electric bulbs 25W Philips energy saver with holder in ceiling fixed durring slab concreting as per approved	4	Each
5.85	Supply and installing 8 Gang with switches board fan regulator and soccket with high quality Platic as approved .	1	No
5.86	Supply and install 10" (250 mm) sweep exhaust fan including plastic louvers Complete in all respect	1	NOS
5.87	Providing and laying hand mixed cement concrete bed under floors using graded Crushed Aggregate upto 1-1/2" (37 mm) and down gauge complete with leveling, ramming, watering and curing. b) 1:4:8 (1 cement:4 sand and 8 shingle/bajri).P.C.C 1:4:8 under Floor		
	Total	236	Cft
5.88	Provide and lay Vitrified/ Porcelain (Imported but not Chinese) tiles in floor with different sizes, Glazed or Matt, local or imported as directed by the Engineer-In-Charge, laid with 6mm thick layer of cement based high polymer modified quick set tile adhesive (water based)Porcelain Tiles in flooring /Dado/Skirting		

S.NO	DESCRIPTION	QTY	UNIT
	Total	944	Sft
5.89	Painting with ICI/Berger or equivalent plastic emulsion paint of approved shade in two or more coats as per manufacturer's instructions on plastered rendered and/or concrete surface over and including the cost of priming coat, surface preparation, dusting, rubbing down smooth, filling cracks, holes removing blisters and other blisters and other imperfections in ground floor or basement. (@ at least 1.65 Litre per 10 Sq.m)	2632	Sft
5.90	Providing & Fixing metal Faluse ceiling size (2'x2') with all required accessories As per instruction of site in charge	944	Sft
6	<u>Men and Women search Rooms:</u>		
6.10	Providing and laying hand mixed cement concrete bed under floors using graded Crushed Aggregate upto 1-1/2" (37 mm) and down gauge complete with leveling, ramming, watering and curing. b) 1:4:8 (1 cement:4 sand and 8 shingle/bajri).P.C.C 1:4:8 under Floor	315	Cft
6.20	Providing and laying Vitrified/ Porcelain (Imported but not Chinese) tiles in floor with different sizes, Glazed or Matt, local or imported as directed by the Engineer-In-Charge, laid with 6mm thick layer of cement based high polymer modified quick set tile adhesive (water based)		
	Total	429	Sft
6.30	Providing and laying 1:2:4 cement concrete using approved coarse sand and crushed aggregate 3/4" (19mm.) and down gauge of required shape or section including formwork and its removal, compacting, and curing on the ground floor excluding the cost of reinforcement.		
	Total	586	Cft

S.NO	DESCRIPTION	QTY	UNIT
6.40	Providing and laying first class solid burnt brick masonry(Brick Strength:1800psi-2000psi) including scaffolding, raking out joints and curing in foundation and sub structure/Basement i/c cost of testing	113	Cft
6.50	Provide Hand Rail for stairs in provide desgin in drawings with steelless steel pipes of 2" Dia and stand post with 3" pipe fixed in concrete and rovel bolt 3" in concrete as per instruction .	90	sft
6.60	Painting with ICI/Berger or equivalent plastic emulsion paint of approved shade in two or more coats as per manufacturer's instructions on plastered rendered and/or concrete surface over and including the cost of priming coat, surface preparation, dusting, rubbing down smooth, filling cracks, holes removing blisters and other blisters and other imperfections in ground floor or basement. (@ atleast 1.65 Litre per 10 Sq.m)	1000	Sft
6.70	Applying weather resistant paint coating such as ICI weather shield,Berger weather coat or equivalent to interior or exterior walls or ceiling including supplying all labour, materials, scaffoldings and removal of debris etc. @ atleast 3.50 litre per 10 Sq.m. Externel Paint with Weather Coat	840	Sft
6.80	Painting with ICI/Berger or equivalent super gloss synthetic enamel paint in two or more coats as per manufacturer's instructions on steel and iron work over and including the cost of priming coat, surface preparation, removing rust, scales and dust with wire brush in ground floor or basement. (@ atleast 1.25Litre per 10 Sq.m)	200	Sft
7	External improvement works:		
7.10	Provide cement sand plaster 13mm thick on both sides of external perimeter walling, including making edges, corners and curing. Cement: sand ratio 1:3.	4664	sft

S.NO	DESCRIPTION	QTY	UNIT
7.20	Provide and apply white wash with lime three coats adding chemical white glue including dusting, filling the holes, cracks and removing inequalities, if any, on entire plastered walling.	4664	sft
7.30	Provide and paint main gate, boom barrier and 2 external doors with required two coat of oil paint in required color as instructed by site in charge in proper way without damaging any wall paint cleaning as necessary.	608	sft
7.40	Remove old loose mud plaster and provide new mud plastering on security room walling (17 ft x 14ft). Dispose waste material away from site.	384	sft
7.50	Provide and apply white wash with lime three coats adding chemical white glue including dusting, filling the holes, cracks and removing inequalities, if any, on entire plastered walling.	384	sft
7.60	Provide and Paint , door and windows with required two coats of oil paint in required color as instructed by site incharge in proper way with out damaging any wall cleaning as necessary.	48	sft
7.70	Provide and fix 1" x 1" x 2mm square mesh wire on existing metal grill drain cover outside VRC to prevent trapping of kids'. The mesh should be fixed in section to allow opening of the grill drain cover for cleaning/maintenance.	1288	sft
7.80	Provide and fix 16 gauge metal sheet on existing metal grill drain cover outside VRC, 7ft wide x 8ft length to aid filling of Hesco over the grill, including cost of red oxide.	56	sft

S.NO	DESCRIPTION	QTY	UNIT
7.81	Assemble, erect and filling HESCO barriers, in two rows/layer; giving effective wall mass height of 3.5ft and base width of 6ft by 21ft length. Hesco to be filled with clean sand or approved soil and compacted in layers not exceeding 300mm thick; cost to include levelling and compaction of ground to receive the Hesco. HESCO will be provided by UNHCR (Sand And labour charges to be consider)	441	CFT
7.82	Supply and Fix Concrete pavers on 3" thick fully compacted sand cushion, concrete pavers to be of approved designs having thickness of 80 mm, mechanically compressed, minimal strength of 4500 psi after laboratory testing at the factory and random testing at the site as and when desired by the Engineer incharge and complete in all respects. Cost to include levelling and compacting of existing zero size aggregate to receive the paving slabs. (Area approx. 3 x29ft x 50ft)	4350	sft
7.83	Provide and place 6" thick by 12" in-situ strip concrete, (ratio 1:2:4) as edge restraint, using approved coarse, sand and crushed aggregate 3/4" (19mm.) and down gauge of required shape or section including formwork and its removal, compacting, and curing (length 3(29+29+50)	162	CFT
7.84	Provide and fixing short bricks walling using 2nd class bricks with cement: sand ration1:3; 7No. by 10ft in length by 2.5ft height by 9" thickness. Provide white washing with lime three coats adding chemical white glue, cost to include trench excavation round the trees to receive the bricks, of 1ft wide by 1ft deep by 3ft diam.	131	CFT
7.85	Provide and place 2" thickness, zero size Aggregate (crush), 20ft x 30ft area between the genetor house and the external perimeter wall, cost to include removal of top soil, levelling and compaction before spreading the aggregate.	600	sft
8	Drainage works:		

S.NO	DESCRIPTION	QTY	UNIT
8.01	Repair existing pipe leakages at the borehole/water tank , provide and fix 2" gate valves, Contractor to assess repairs needs before tendering	1	item

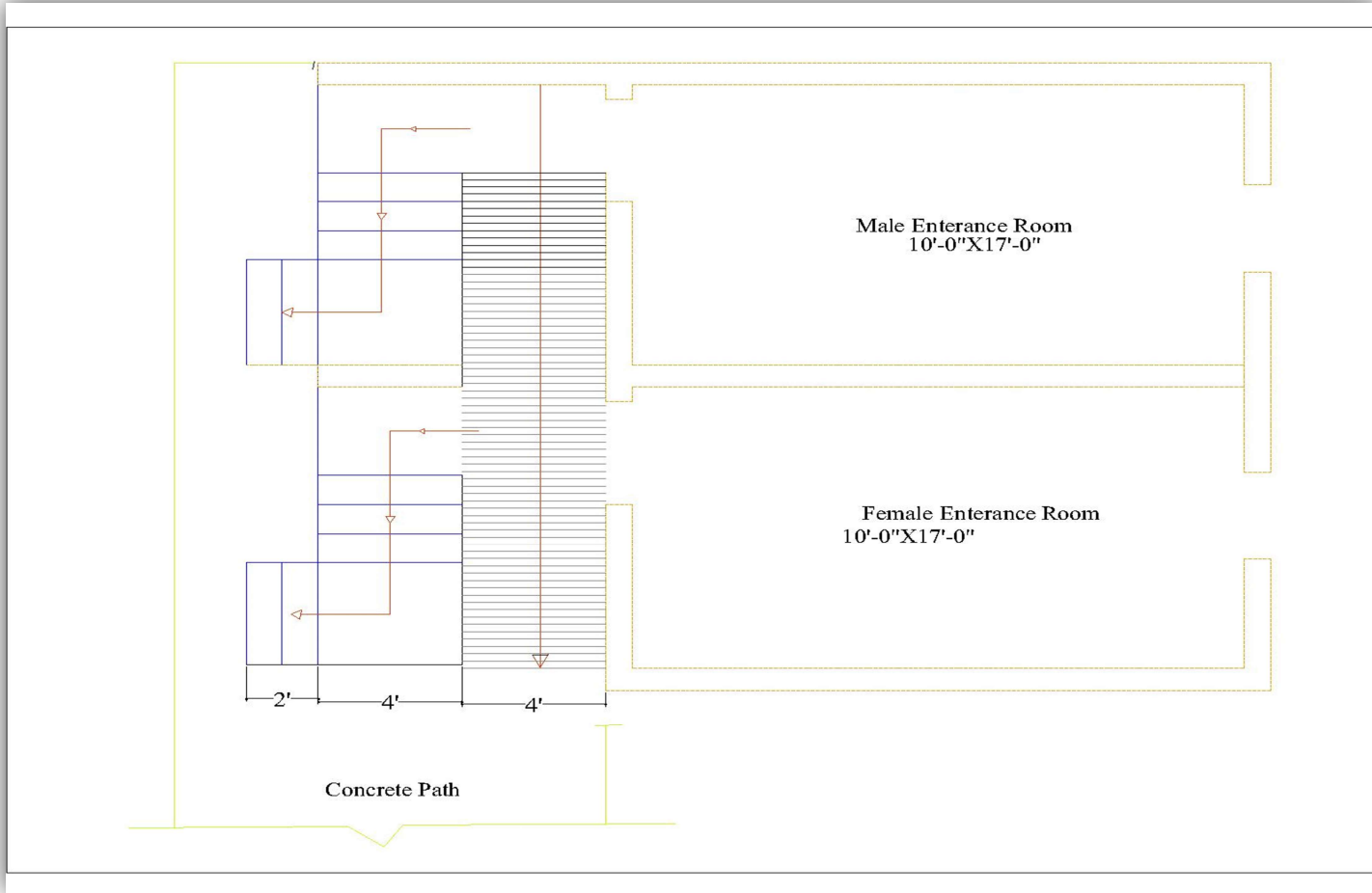
S.NO	DESCRIPTION	QTY	UNIT
8.02	Provide and fix wall hung stainless steel wash hand basin, approx.. size 24" x 14" of superior quality of approved make, complete with drainage pipe.	1	item
8.03	Excavate over site to remove top soil 8" (200mm) , including existing loose aggregate on identified areas around the water tank . Dispose surplus excavated material as directed. (area 25x (65+60)	2094	CFT
8.04	Supply approved earth material, fill, level , water and compact surface to receive concrete paving slabs.	2094	CFT
8.05	Supply and Fix Concrete pavers on 3" thick fully compacted sand cushion, concrete pavers to be of approved designs having thickness of 80 mm, mechanically compressed, minimal strength of 7000 psi after laboratory testing at the factory and random testing at the site as and when desired by the Engineer change is complete in all respects. (No PCC work is permitted underneath this item of work)	3125	sft
8.06	Provide and place 6" thick by 12" in-situ strip concrete, (ratio 1:2:4) as edge restraint, using approved coarse, sand and crushed aggregate 3/4" (19mm.) and down gauge of required shape or section including formwork and its removal, compacting, and curing on the ground floor, along the areas with no edge restraint. (approx.. length 250)	125	CFT
8.07	Provide shallow double slope concrete drainage channel along the paved area to drain water to the nearby storm drain. Approx. 3" thickness x 16" wide , overall length 100 ft. (concrete ration 1:2:4)	100	Rft
8.08	Provide and fix PVC flexible hose pipe 3"diam. by 50ft long complete with 3" gate valve and well fixed both at the inlet and at out let, including provision of a through-hole in the wall for water tank refilling.	1	item

S.NO	DESCRIPTION	QTY	UNIT



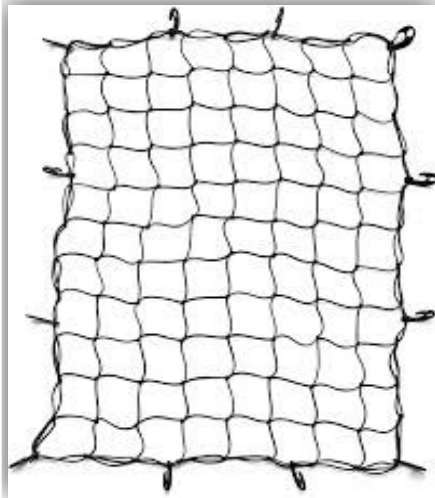
Sample concrete Drainage Channel

S.NO	DESCRIPTION	QTY	UNIT
------	-------------	-----	------



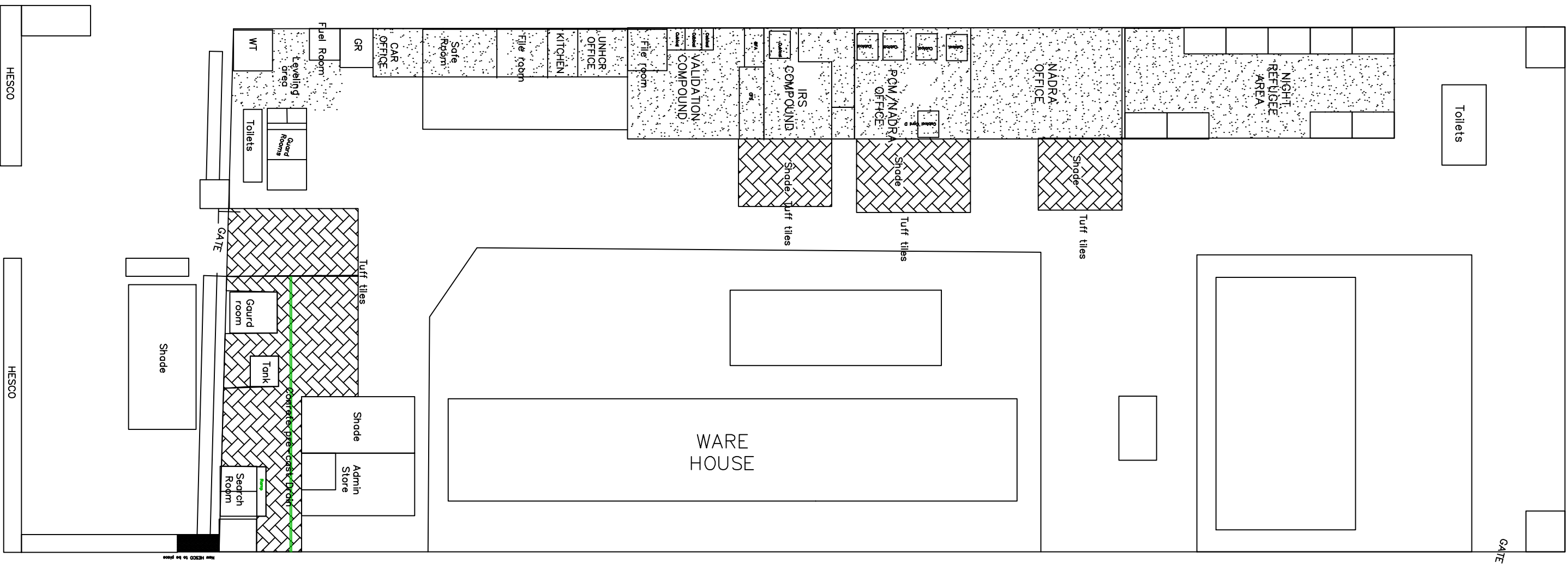
Search Room and stair with ramps at refugee entrance

S.NO	DESCRIPTION	QTY	UNIT
------	-------------	-----	------



Proposed Roof Ceiling with wire mesh for tile falling protection.

S.NO	DESCRIPTION	QTY	UNIT
------	-------------	-----	------



Use HESCO to fence