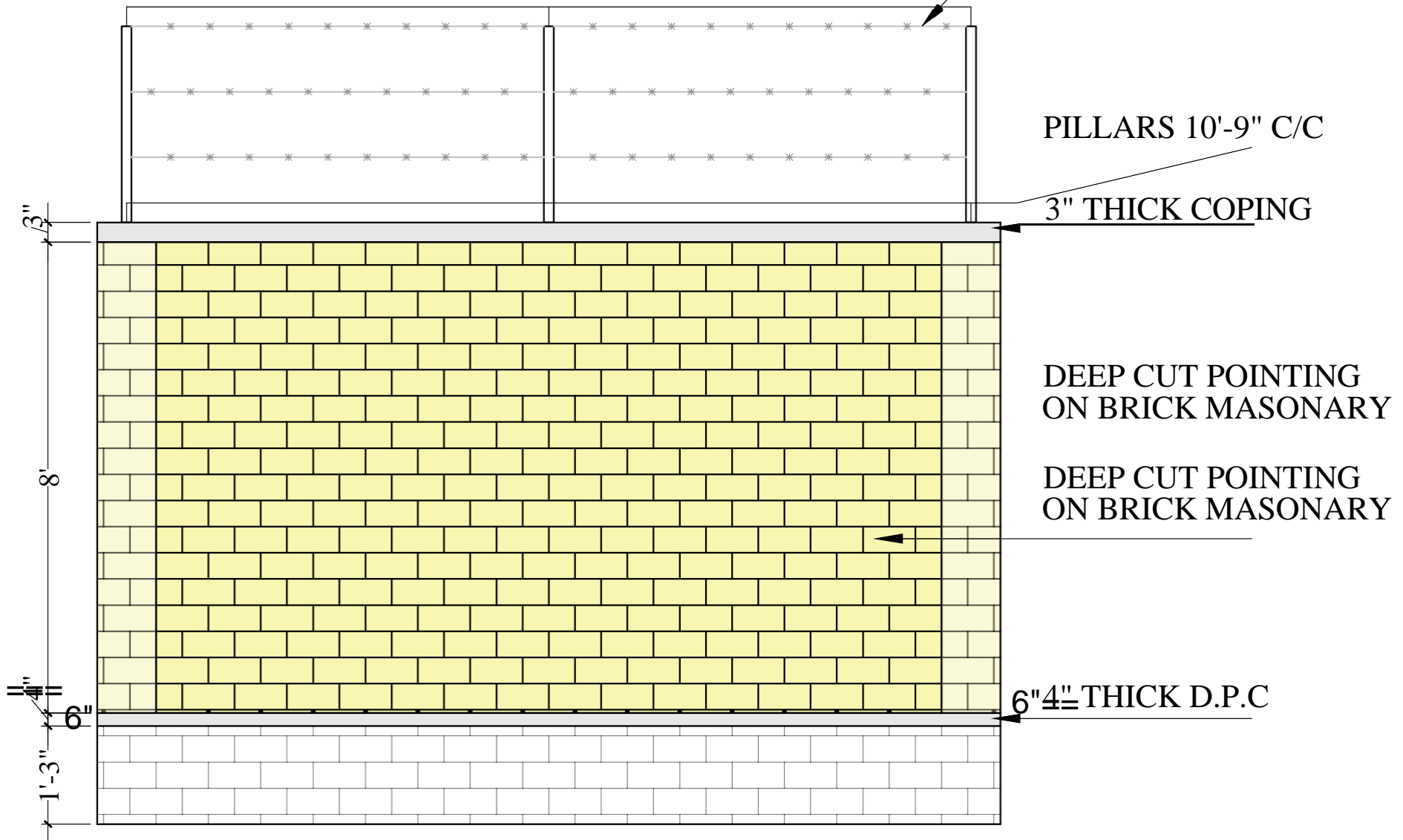
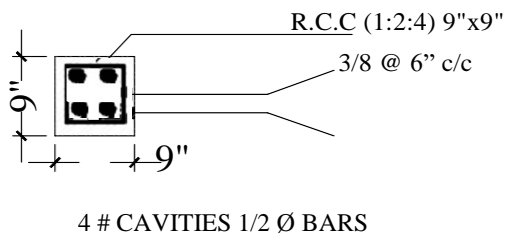


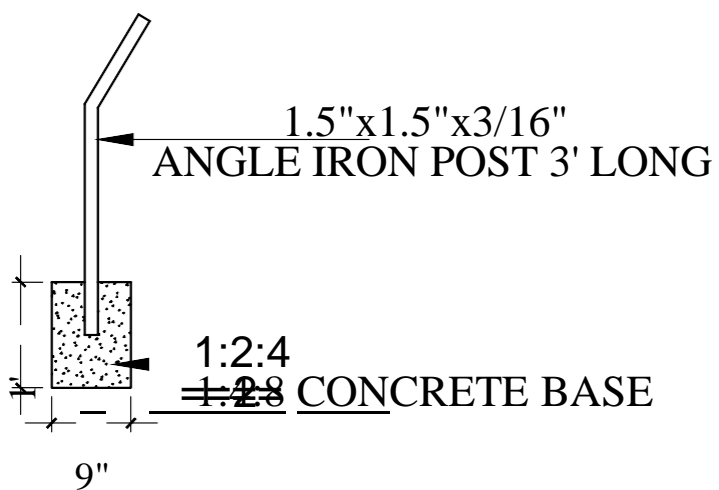
BARBED WIRE FENCING COMPRISING  
1.5"x1.5"x3/16" ANGLE IRON POST 3' LONG  
WITH PAINTING, BARBED WIRE 3 PLY 12 GAUGE



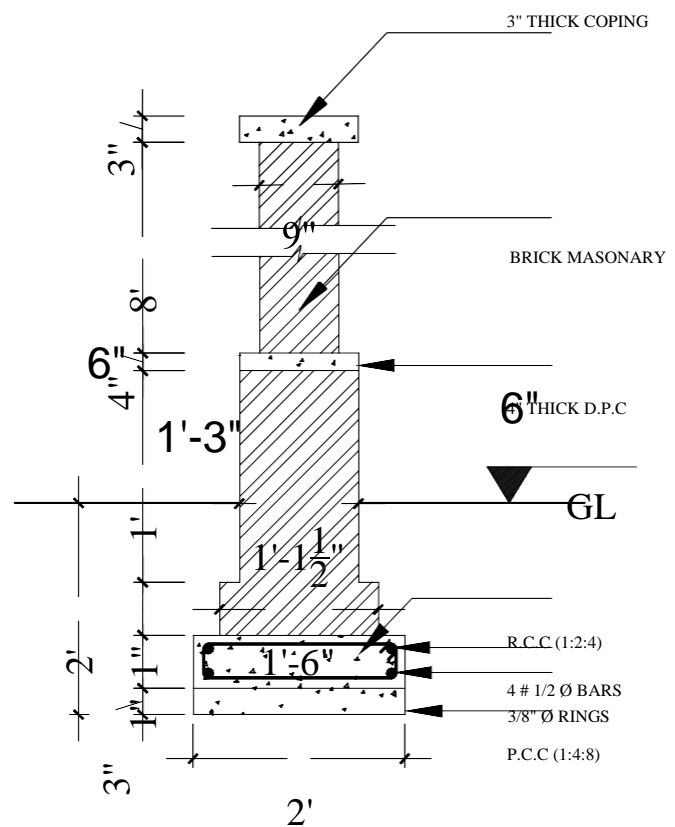
ELEVATION OF WALL



SECTION OF COLUMN/PILLARS



SECTION OF POST



SECTION OF WALL