

1

2

3

4

A

B

C

D

12'-00"

12'-00"

12'-00"

13'-00"

13'-00"

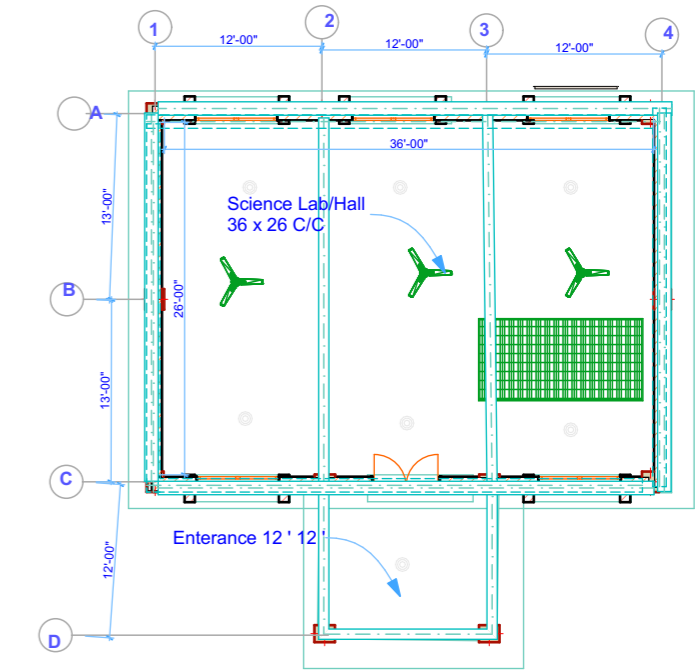
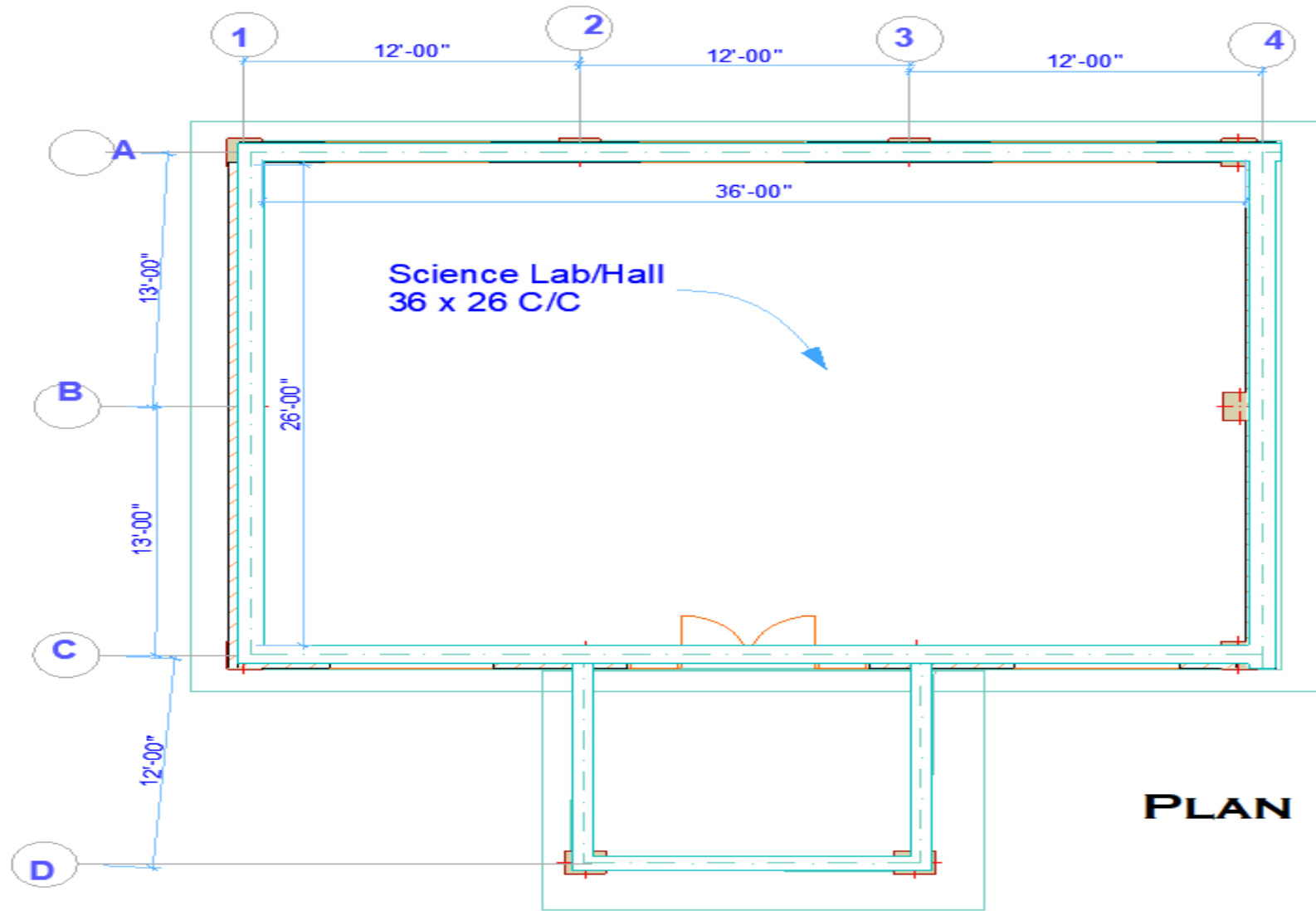
12'-00"

36'-00"

26'-00"

Science Lab/Hall
36 x 26 C/C

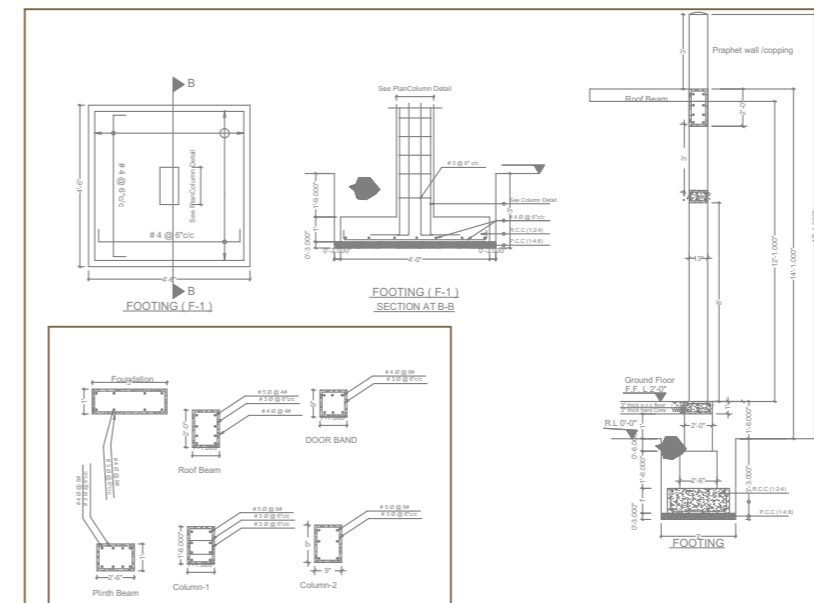
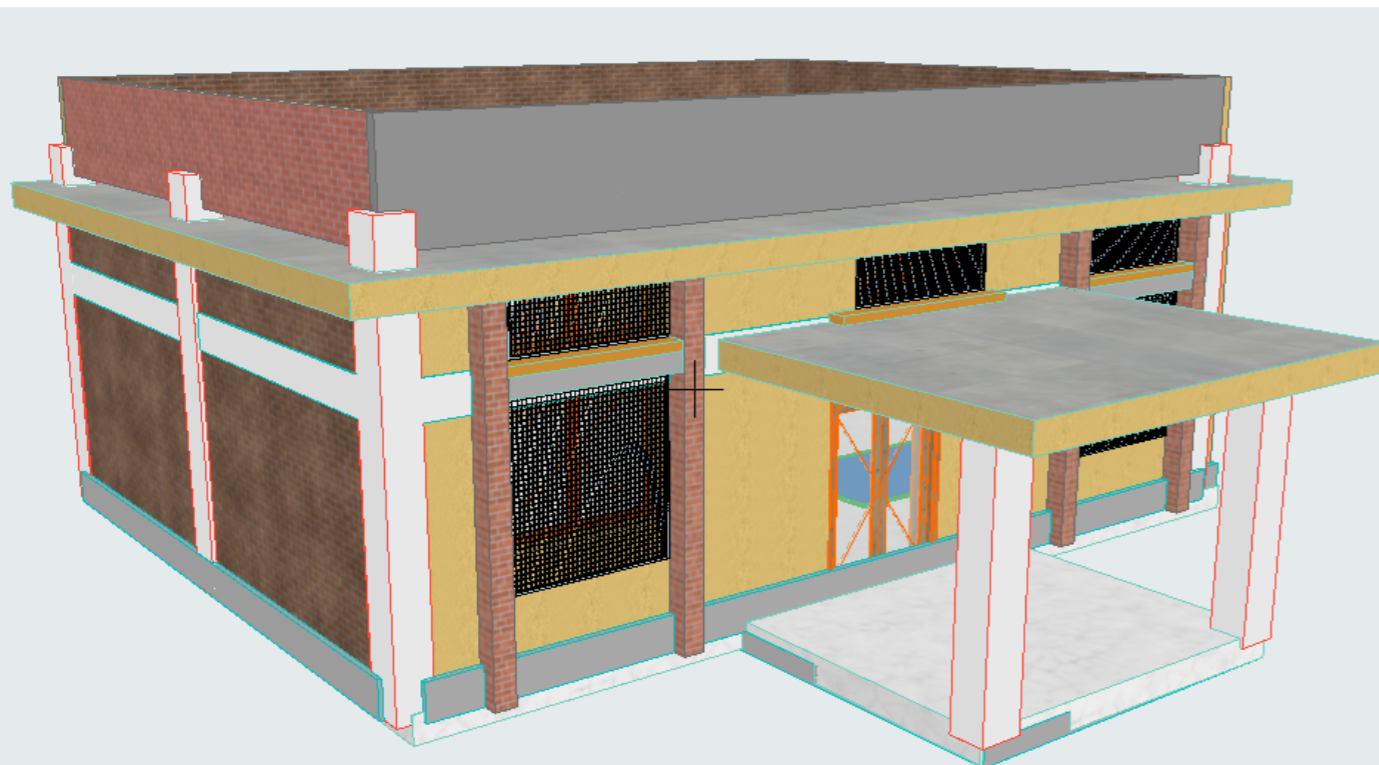
Entrance 12' 12"



PLAN

Note :

Verandah Must be casted earlier then slab of room,
Formwork must be used of steel
Skilled Labors to be used
For any confusion consult with UNHCR



0. Ground Floor (4) 1:168.45



United Nations High Commissioner for Refugees
Haut Commissariat des Nations Unies pour les réfugiés



UNHCR

Chaman Housing H#36-E
Quetta

Science lab/ Hall in RV school

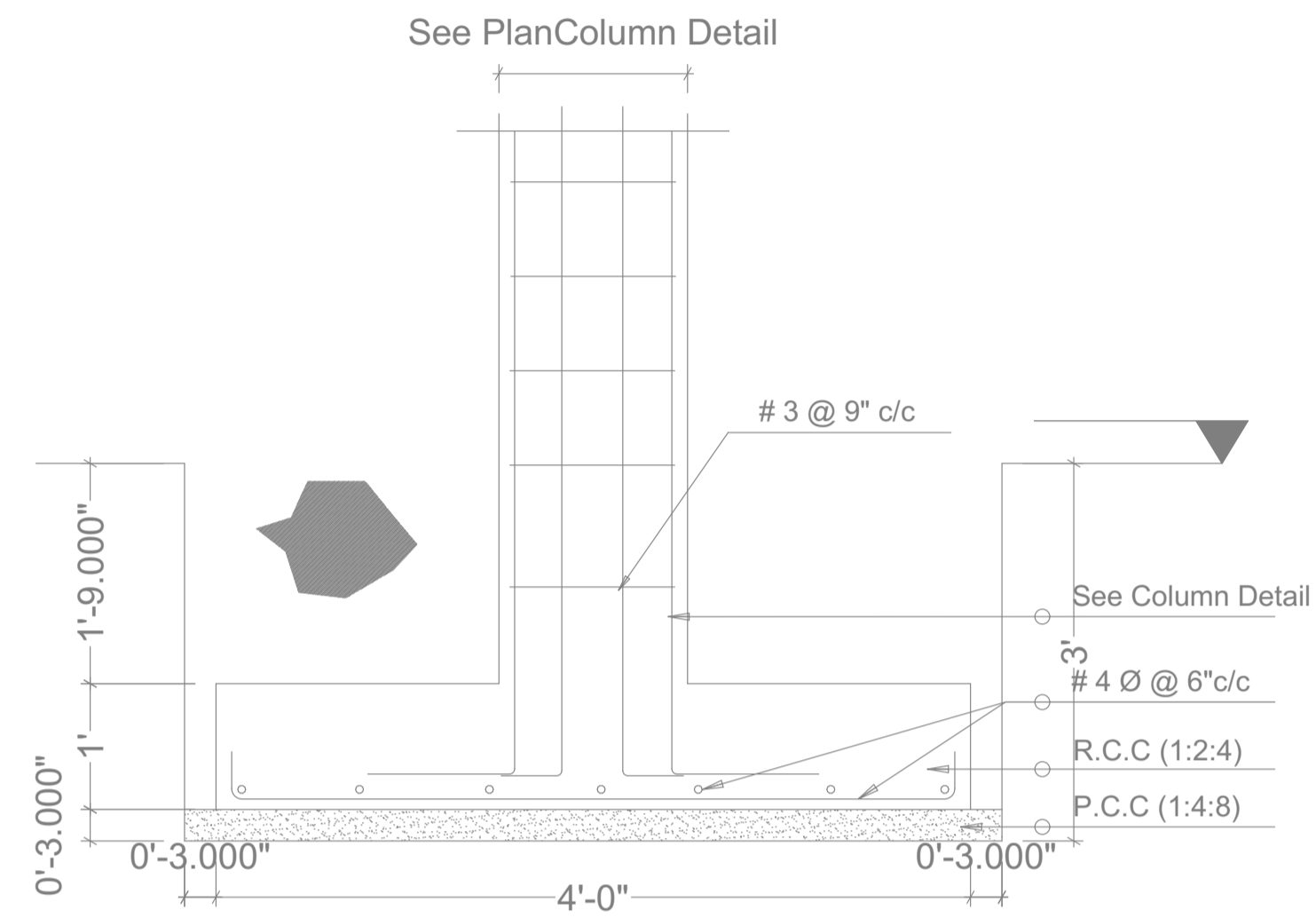
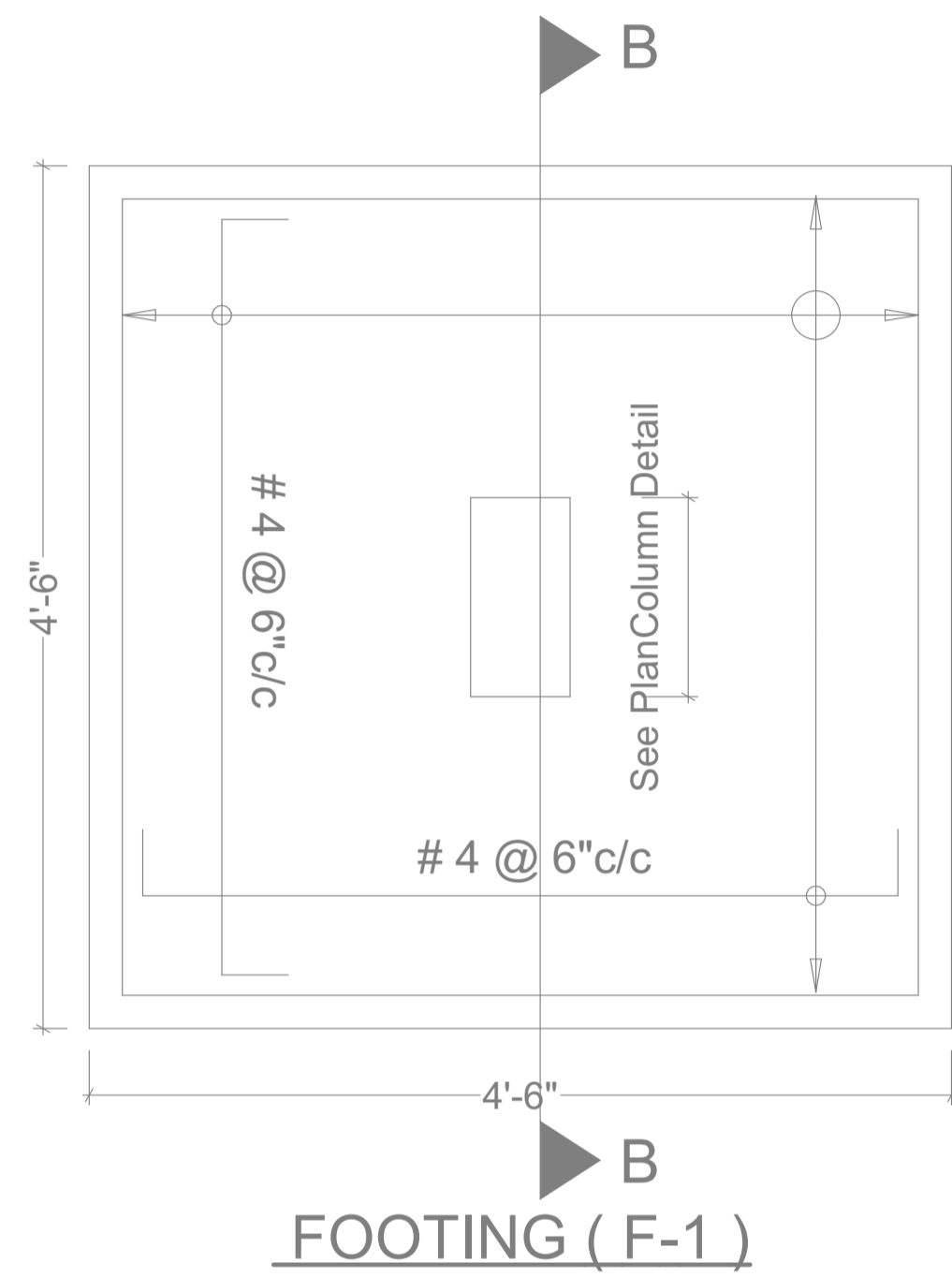
Size 36 x 26

Modified by
Engr Najeeb Mandokhail

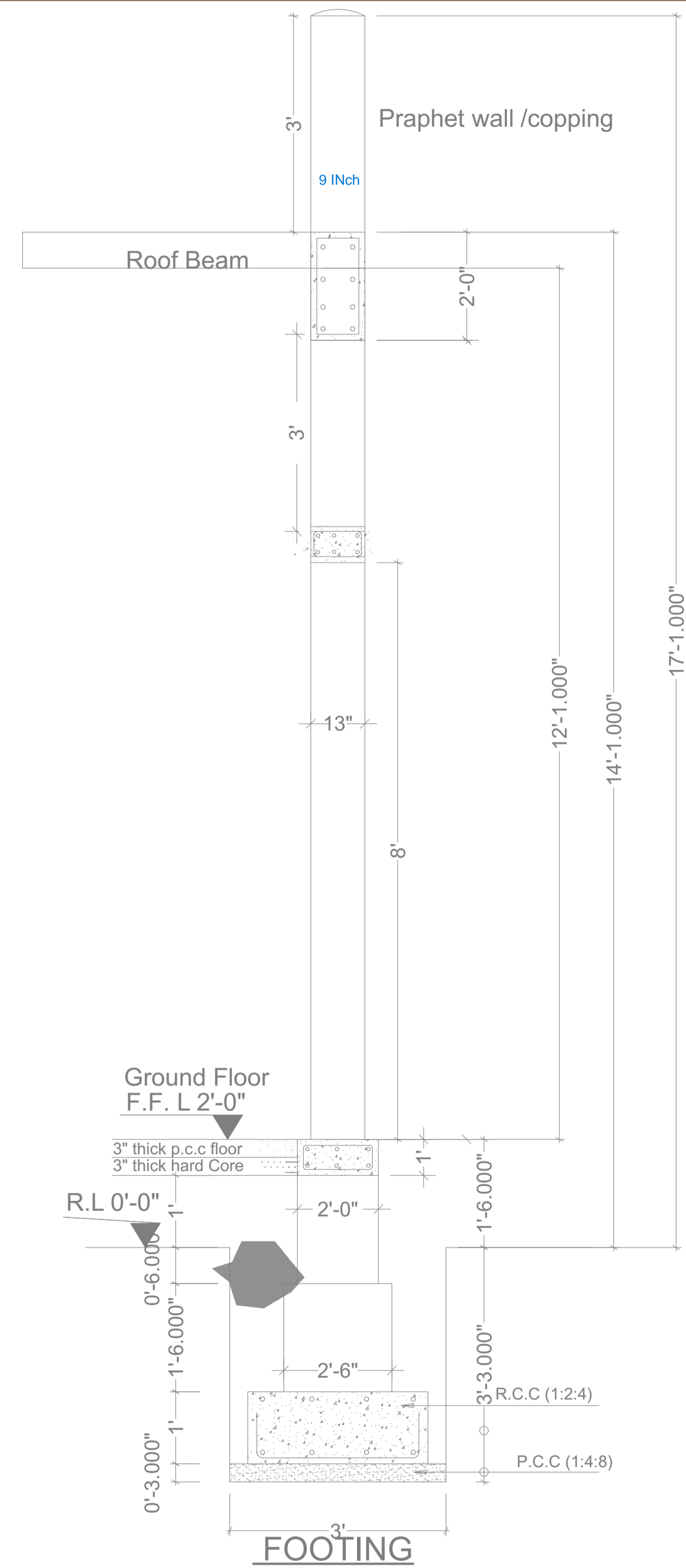
Checked by

Signature: Date

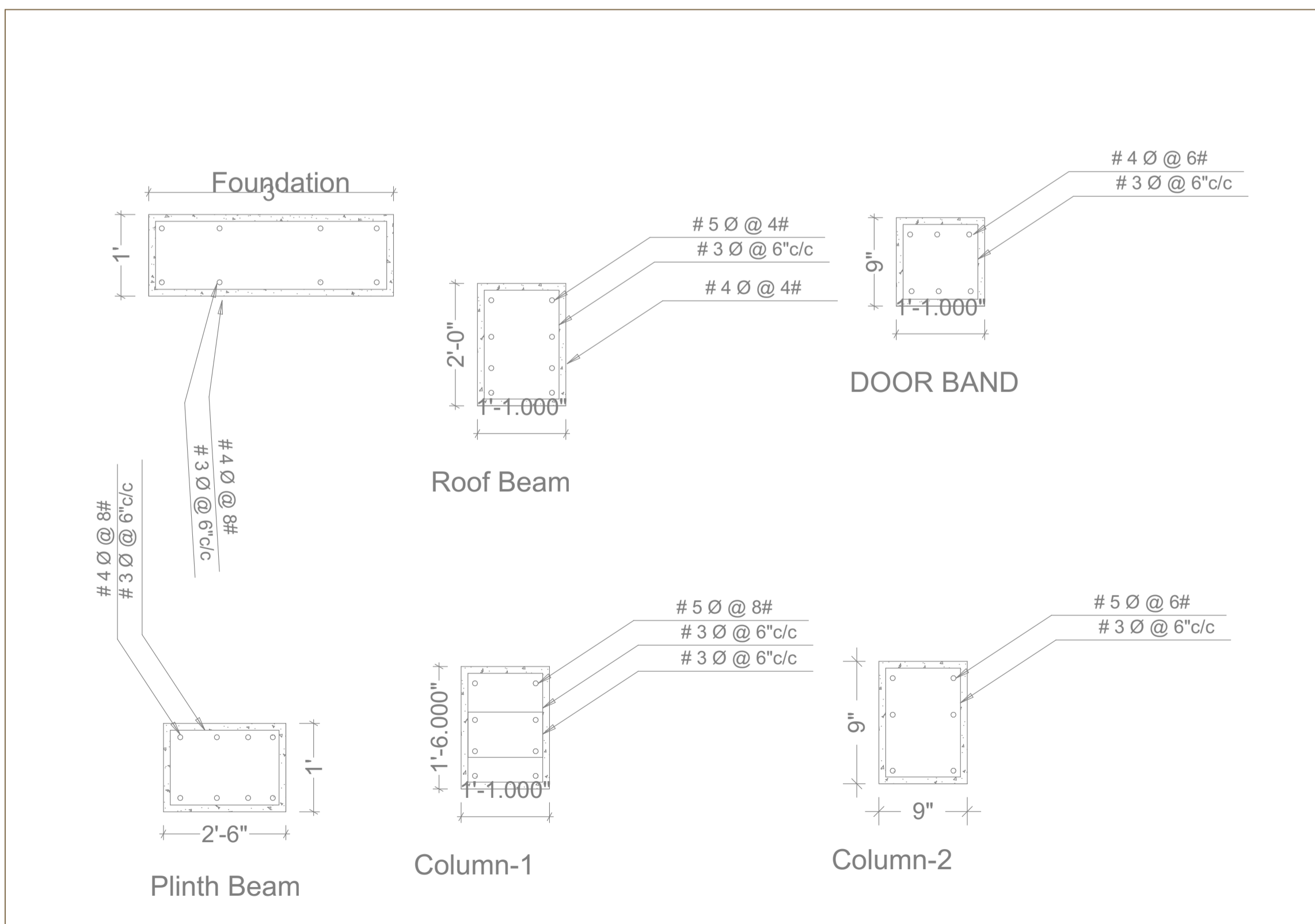
Signature: Date

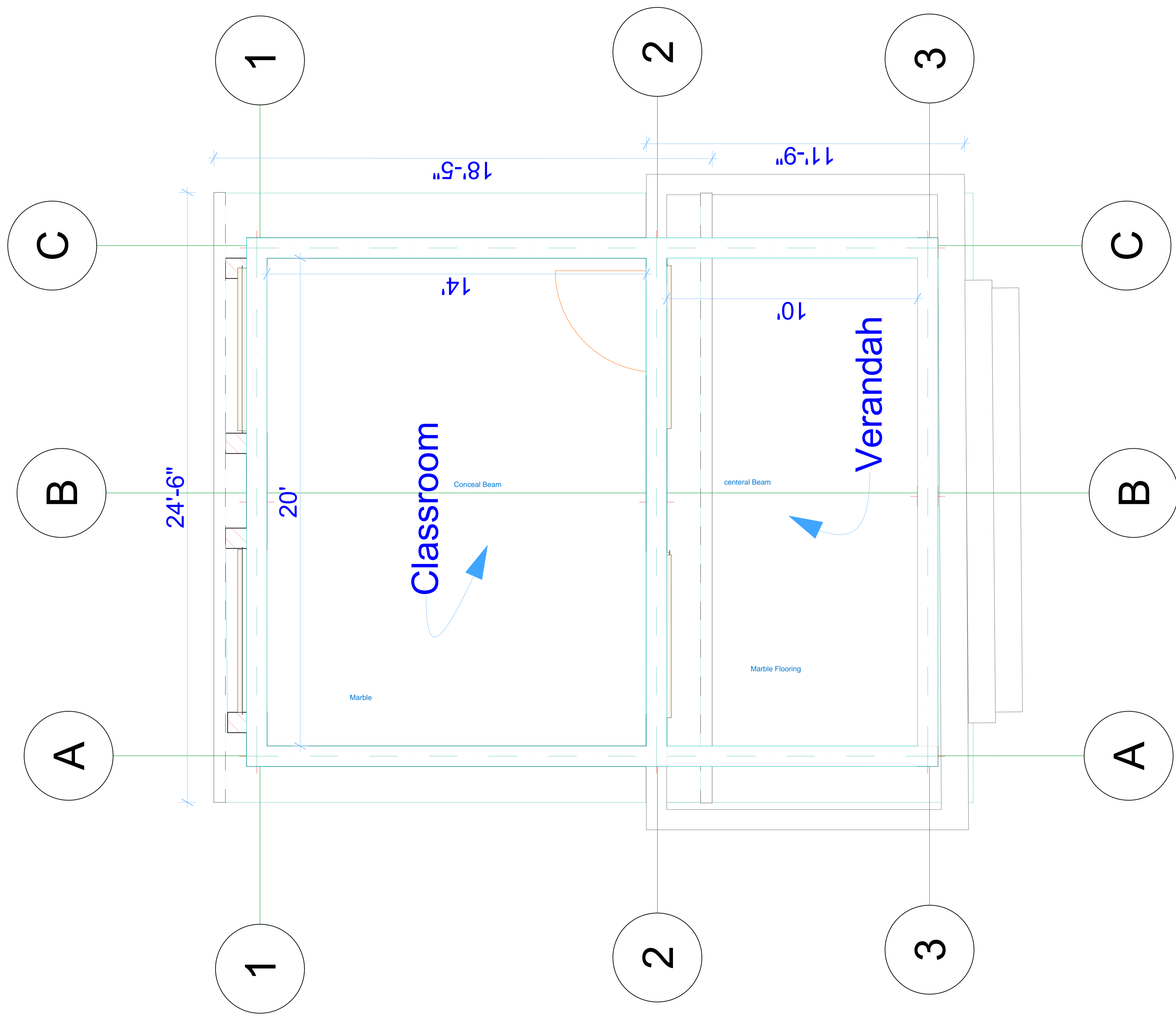


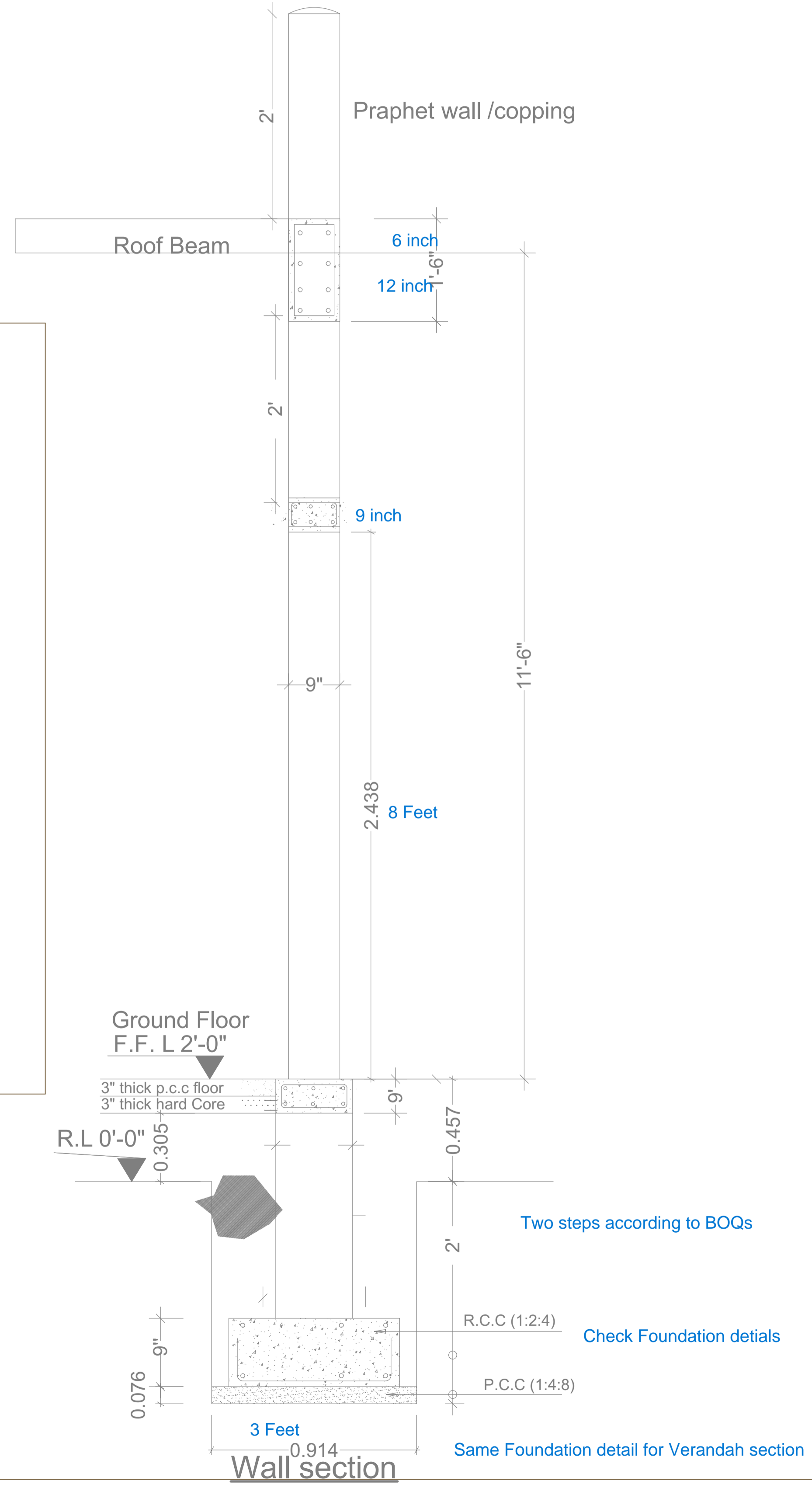
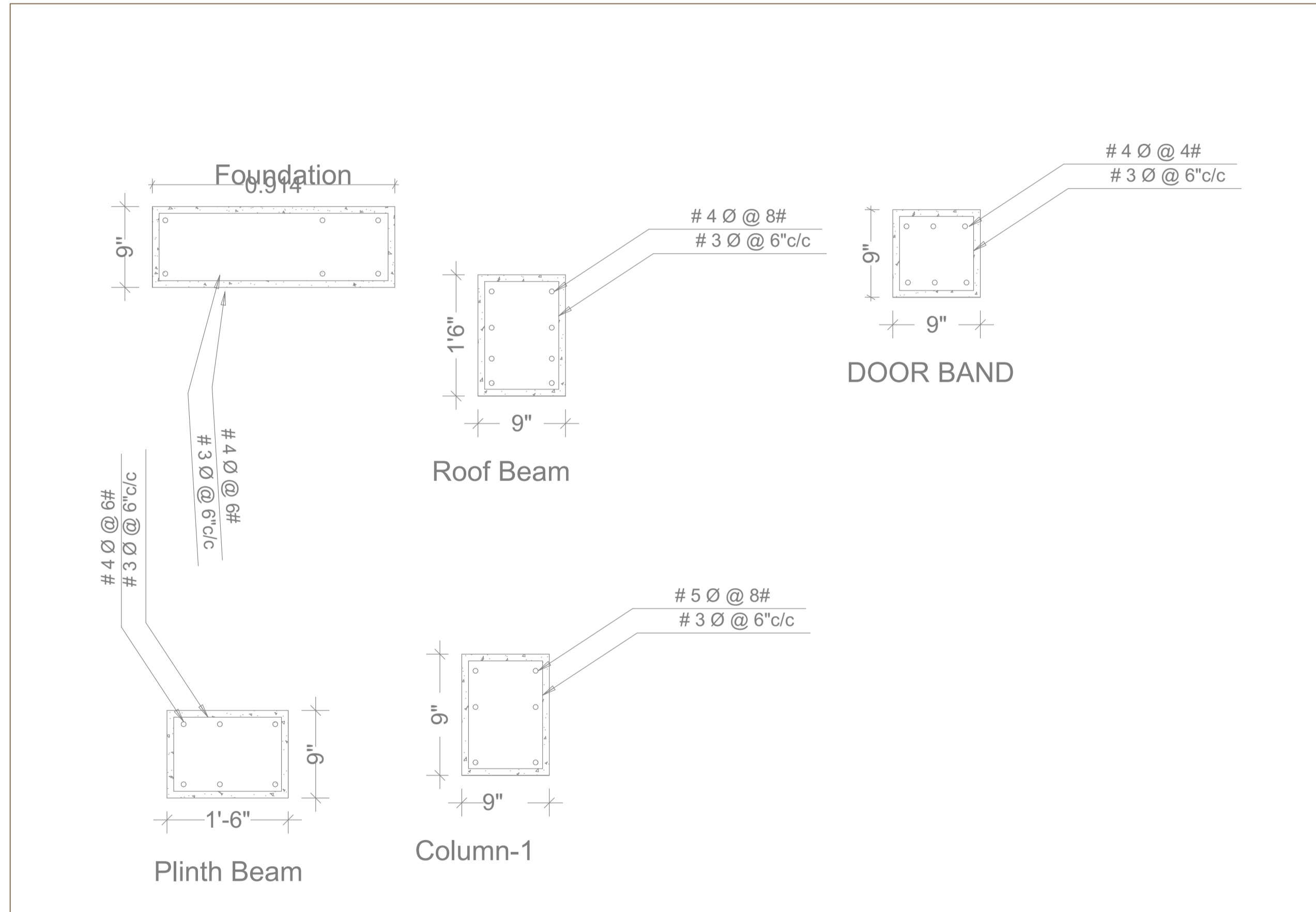
FOOTING (F-1)
SECTION AT B-B



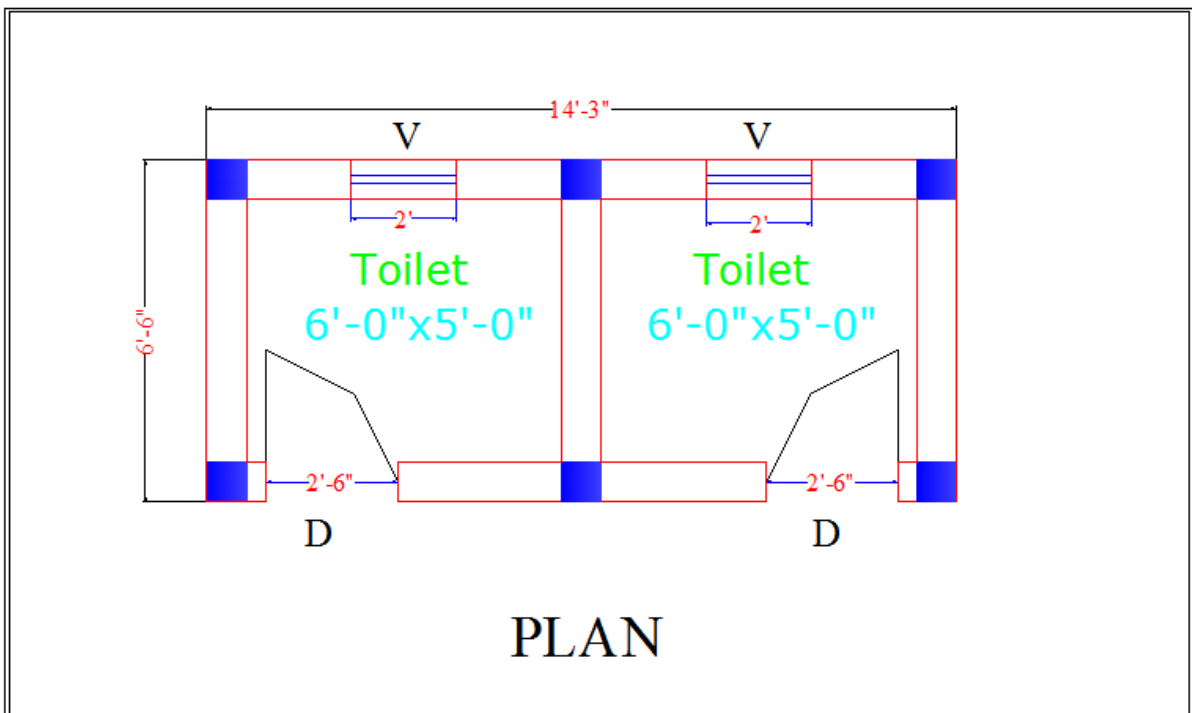
Same foundation for Verandah



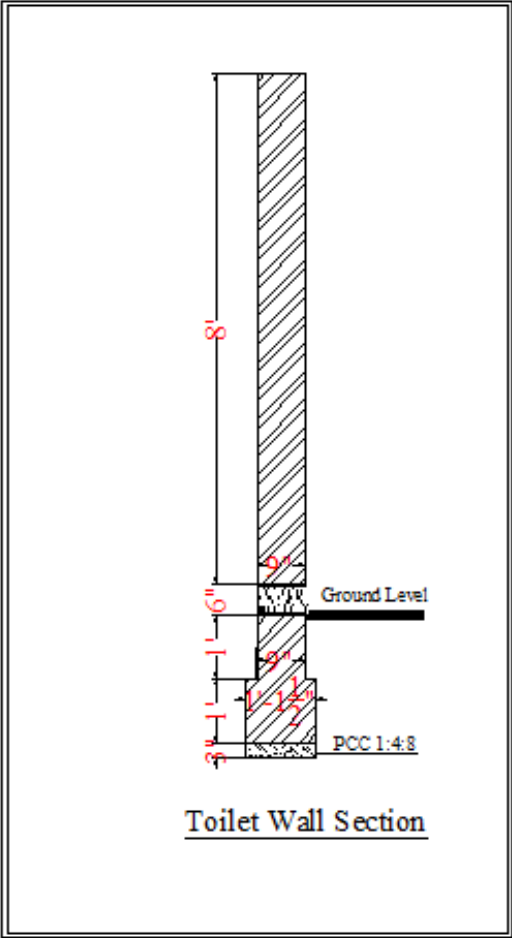








As per provided section including protection 1.5 feet each site



Columns footing with RCC followed by section of wall

