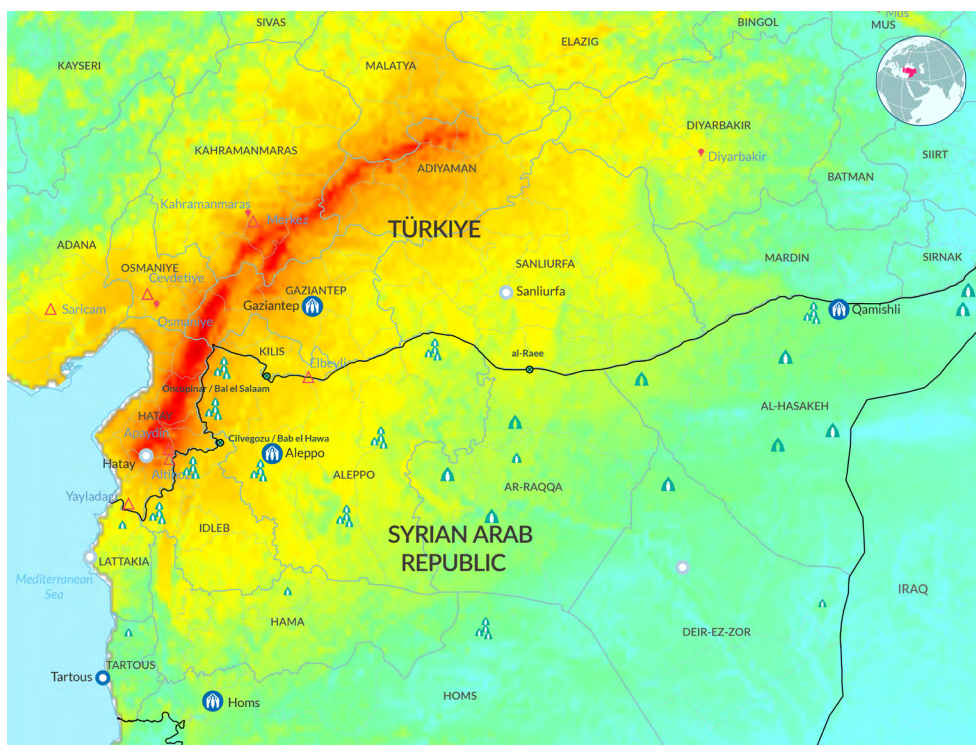
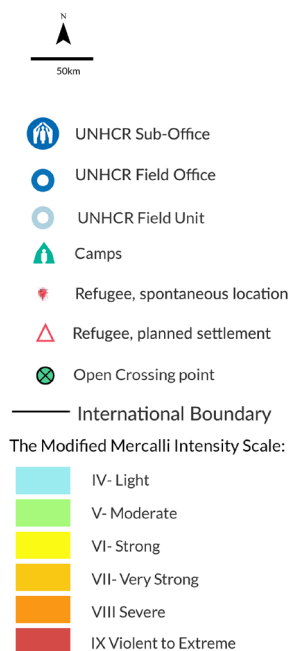


# Syria and Türkiye Earthquake Emergency Supplementary Appeal

February – May 2023



PRINTING DATE: 15 Feb 2023

	SYRIA*	TURKIYE**
Overall Population Affected	8.8M***	15.6M
Population Affected - Refugees	1,091***	1.75M
Population Affected - IDPs	4M***	NA
Dead (Total)	5,791***	35,418****
Injured (Total)	10,041***	80,278****
Evacuated (Total)	NA	158,165****

Data as of  
14 Feb 2023

\*Data as 13 Feb 2023. \*\*Data as 16 Feb 2023. \*\*\* Source: <https://reliefweb.int/report/syrian-arab-republic/flash-appeal-syrian-arab-republic-earthquake-february-may-2023>. \*\*\*\* As of 14 Feb 2023. Source: <https://www.afad.gov.tr/kahramanmarasta-meydana-gelen-depremler-hk-basini-bulteni29>. \*\*\*\*\* Source: <https://www.afad.gov.tr/kahramanmarasta-meydana-gelen-depremler-hk-28>.

## Financial Requirements

### Budget summary (in USD)

Operation	ExCom-approved budget	Earthquake emergency additional needs	Total
Syria (including cross-border operation)	485,962,594	51,285,437*	537,248,031
Türkiye	348,500,000	150,000,000	498,500,000
<b>Total</b>	<b>834,462,594</b>	<b>201,285,437</b>	<b>1,035,748,031</b>

\*Note: Of the \$51.3 million earthquake-specific assistance for Syria, some \$41.5 million are included in the prioritized Syria Flash Appeal.

# Syria

At least 8.8 million people have been affected by the earthquake in the Syrian Arab Republic (Syria), with the majority anticipated to need some form of humanitarian assistance. Prior to the earthquake, an estimated 15.3 million people in Syria were already in need of humanitarian assistance. This new emergency is compounding suffering in a country already devastated by 12 years of crisis.

## Prioritizing forcibly displaced people and host communities, UNHCR will:

- 1** Support Syria through the provision of life-saving humanitarian assistance for all those affected by the earthquake, with a specific focus on the most vulnerable.
- 2** Deliver protection services to people impacted by the earthquakes to meet immediate needs with consideration to longer-term needs.
- 3** Ensure effective coordination of the inter-agency response, especially in the protection and shelter/non-food items sectors.

## Activities

- 1** Provide relief items, emergency shelter, cash and in-kind assistance:  
Population targeted for assistance: 385,000 people in Syria.
- 2** Ensure protection and access to social protection services, psychosocial support and counselling:  
Population targeted for assistance: 385,000 people in Syria.

## Budget Summary in USD (Syria)

Syria	
OA1: Access to territory, registration and documentation	882,945
OA4: Gender-based violence	296,559
OA5: Child protection	466,998
OA7: Community engagement and women's empowerment	3,499,358
OA8: Well-being and basic needs (incl. core relief items)	25,089,576
OA9: Sustainable housing and settlements (incl. shelter support)	21,050,000
<b>Total budget for Syria</b>	<b>51,285,437*</b>

\*Note: Of the \$51.3 million earthquake-specific assistance for Syria, some \$41.5 million are included in the prioritized Syria Flash Appeal.

# Türkiye

Türkiye experienced severe earthquakes on 6 Feb 2023 in 11 provinces, impacting over 15.6 million people. Türkiye being the world's largest refugee hosting country, this area hosts some 1.75 million of its four million refugees (Syrians under Temporary Protection and International Protection Applicants and Status holders). People's homes are damaged or totally destroyed and people are in need of immediate life-saving assistance. Public services are also severely disrupted. UNHCR is currently providing several thousand life-saving relief items for affected populations and continuing and extending its refugee response, working closely with UNHCR's governmental partners and coordinating bodies.

## UNHCR's overall aims are:

- 1 To improve living conditions of people affected by the earthquakes.
- 2 To assist people, including refugees, with specific needs to find and access necessary services including documentation and social protection.

This supplementary appeal is complementing UNHCR's existing refugee response appeal. UNHCR continues to lead the Regional Refugee & Resilience Plan (3RP) coordination, together with UNDP in Türkiye.

## Activities

- 1 Provide safe and secure shelter with tents and other forms of housing for up to 350,000 earthquake-affected people.
- 2 Distribute life-saving relief items such as blankets, hygiene sets, jerry cans, kitchen sets and mattresses to 1.5 million earthquake-affected people.
- 3 Support availability of social protection services in the affected communities.
- 4 Provide targeted assistance to 450,000 refugees with specific needs affected by the earthquakes.
- 5 Support continuity of registration and documentation services.

## Budget Summary for Türkiye in USD

Türkiye	
People affected by earthquakes are able to improve their living conditions with relief items and specific needs support	83,000,000
People affected by earthquakes find shelter support	37,000,000
Refugees with specific needs have access to specialized services	16,000,000
Persons seeking international protection are registered and documented	14,000,000
<b>Total budget</b>	<b>150,000,000</b>

## The importance of flexible funding

Flexible funds help UNHCR to kick-start an emergency response, bolster forgotten or underresourced crises, and implement programmes to their full extent. They also enable UNHCR to plan and manage resources efficiently and effectively, contributing to the collective success in every life that is transformed and saved. Without flexible funding this first phase of the response, which has seen thousands of core relief items, thousands of health kits, essential shelter supplies and protection assistance delivered to households would have struggled to get off the ground. Flexible funding will remain vital as the response develops, and as protection and assistance needs such as counselling and information sharing, documentation and restoration of family links become clearer.

 **For further reference:**

[Donate](#)**Flash appeal Türkiye****Flash appeal Syria**