

FLASH APPEAL

LEBANON

COVERING THE PERIOD
OCTOBER-DECEMBER

ISSUED OCTOBER 2024



PHOTO ON COVER

Airstrike on Zaita in the south of Lebanon/ 24 September 2024
Photo credit: UNICEF

This document provides an initial estimate of financial requirements for humanitarian organizations to provide immediate and life-saving assistance and protection to people impacted by the escalation of conflict in Lebanon, in support of the Government-led relief efforts and in complement to the Lebanon Response Plan (LRP), which remains the overarching humanitarian and stabilization response framework in Lebanon. The figures included in this appeal are indicative only and may be revised in the days and weeks ahead as further information becomes available on the situation and response required.

The designations employed and the presentation of material in the report do not imply the expression of any opinion whatsoever on the part of the Secretariat of the United Nations concerning the legal status of any country, territory, city or area or of its authorities, or concerning the delimitation of its frontiers or boundaries.

Get the latest updates

OCHA coordinates humanitarian action to ensure crisis-affected people receive the assistance and protection they need. It works to overcome obstacles that impede humanitarian assistance from reaching people affected by crises, and provides leadership in mobilizing assistance and resources on behalf of the humanitarian system.

www.unocha.org

twitter.com/OCHALebanon

Humanitarian Action

ANALYSING NEEDS AND RESPONSE

Humanitarian Action provides a comprehensive overview of the humanitarian landscape. It provides the latest verified information on needs and delivery of the humanitarian response as well as financial contributions.

humanitarianaction.info

rw response

ReliefWeb Response is part of OCHA's commitment to the humanitarian community to ensure that relevant information in a humanitarian emergency is available to facilitate situational understanding and decision-making. It is the next generation of the Humanitarian Response platform.

reliefweb.int/country/lbn



The Financial Tracking Service (FTS) is the primary provider of continuously updated data on global humanitarian funding, and is a major contributor to strategic decision making by highlighting gaps and priorities, thus contributing to effective, efficient and principled humanitarian assistance.

fts.unocha.org

Table of contents

04	At a glance
06	Crisis Overview
10	Response
13	Strategic Objectives
14	Response Strategy
17	Coordination & Response Monitoring
18	Sectoral Response
18	Basic Assistance
19	Education
21	Food Security & Agriculture
22	Health
24	Nutrition
25	Protection
30	Shelter
31	Site Management And Coordination
32	Social Stability
34	Water, Sanitation And Hygiene (WASH)
35	Livelihoods
36	Logistics
37	Emergency Telecommunications
38	Coordination, Community Engagement & Protection Against Sexual Exploitation And Abuse
40	How to support the Lebanon Flash Appeal

At a glance

PEOPLE IN NEED

1M

PEOPLE TARGETED

1M

REQUIREMENTS (US\$)

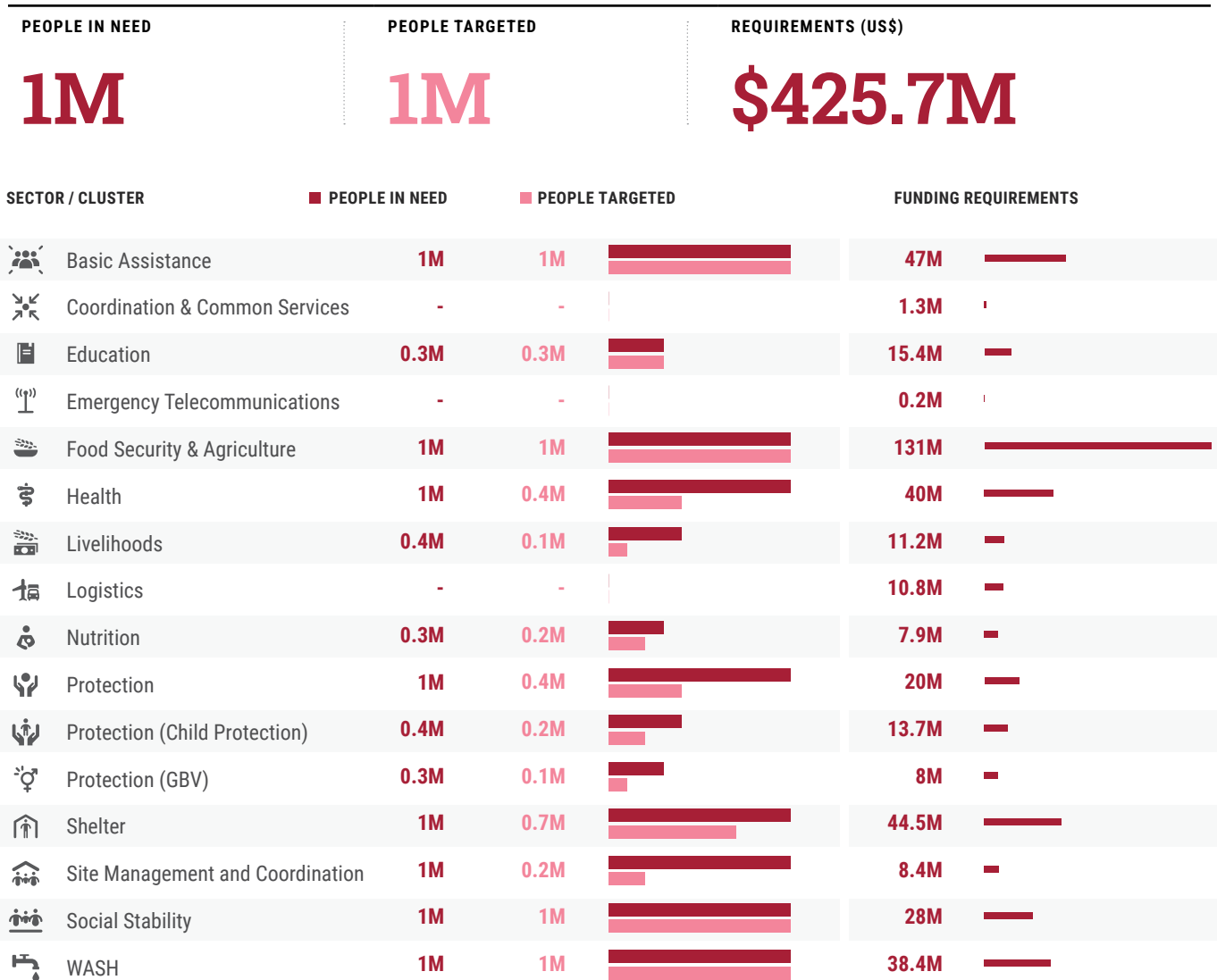
\$425.7M



The designations employed and the presentation of material in this report do not imply the expression of any opinion whatsoever concerning the legal status of any country, territory, city or area or of its authorities, or concerning the delimitation of its frontiers or boundaries. / Map creation date: 30 September 2024.

Total people targeted and funding required

by cluster



Crisis Overview

Lebanon is facing the largest escalation of conflict since the 2006 Lebanon War, with 1,030 people killed between 16 to 27 September, including 87 children and 156 women, according to the Lebanese Ministry of Public Health (MoPH). In the early hours of Monday, 23 September, a large-scale military operation launched by Israel in Lebanon resulted in the deadliest exchange of fire across the Blue Line since October 2023. Israeli airstrikes have since hit dozens of towns across all governorates of Lebanon, including South Lebanon (Saida, Tyre), Nabatieh, and Bekaa and the southern suburbs of Beirut, which has an estimated population of 700,000 people and is home to two Palestine refugee camps, leading to mass displacement from that area following the attacks on 27 September.

The latest escalation was preceded by an unprecedented increase in attacks across the Blue Line since October 2023. Between 7 October 2023 and 20 September 2024, over 10,200 attacks were reportedly exchanged between Israel and Hezbollah and other armed groups in Lebanon, including over 8,300 attacks carried out by Israel killing at least 752 people in Lebanon and over 1,900 attacks by Hezbollah and other armed groups killing at least 33 Israelis, according to Armed Conflict Location Event Data (ACLED). On 19 and 20 September, simultaneous attacks against communications equipment in Lebanon—including pagers and two-way radios—killed 37 people and injured more than 3,000, according to MoPH.

Displacement now surpasses the 2006 war, triggered by intense Israeli strikes and orders for civilian evacuations. As of 29 September, national authorities estimate more than one million people have been displaced. The intense military escalation has caused mass displacement, mainly from southern Lebanon and Beirut's densely populated southern suburbs. With people still on the move, the 29 September

2024 edition of the IOM DTM (round 49) accounts for 350,000 internally displaced persons (IDPs). Further data collection rounds will be conducted in coming days, and the displaced figure is expected to increase. Many of the displaced persons displaced multiple times since October 2023. Most displaced people require urgent assistance, having had to flee their homes rapidly without the basic items they need for daily life. The communities and centres hosting them also require support. Refugees are facing even more difficult circumstances now due to a lack of access to shelter and essential services. Displacement from Lebanon to Syria has also been reported, with some 70,000 people estimated to have crossed as of 29 September.

The ongoing violence and rapidly deteriorating security situation is putting hundreds of thousands of people's lives at risk on both sides of the Blue Line. [Nearly 90 per cent of Lebanon's population](#) lives in urban areas, including in sprawling and densely populated urban neighborhoods, making mass casualties in urban areas a particular concern. Older people, people with disabilities, and other people unable to flee due to different barriers, are at heightened risk in areas under bombardment and attack.

Essential infrastructure has been damaged, destroyed and strained. Before 20 September, at least 4,000 residential buildings had been destroyed, while 20,000 others severely damaged, since October 2023, according to the Council for South Lebanon. As of 28 September 2024, 25 water facilities are reported damaged impacting nearly 300,000 people, and 37 health facilities are closed across the country. Children's access to education has also been directly impacted. Most of the 795 buildings that serve as collective centres are schools/educational establishments, affecting access to education for students. This adds to existing challenges for

education caused by the COVID-19 pandemic, political instability, economic downturns, and continuous conflict. The start of the new school year has been postponed until October, exacerbating the impact on children.

This catastrophic escalation in hostilities comes against a backdrop of a multi-layered and complex governance, economic and financial crisis in Lebanon, which has been marked by a steady deterioration of social stability and systems, and internal and external shocks such as COVID-19 and the Beirut Port explosion in 2020. The economic and financial crisis has caused Lebanon's Gross Domestic Product (GDP) to decrease from \$54.9 billion in 2018 to \$17.94 billion in 2023. The country is grappling with hyperinflation, which has eroded the purchasing power of individuals, making everyday goods and services unaffordable. Poverty has more than tripled in the last decade, and now affects 44 per cent of the total population in Lebanon, according to the [World Bank](#). Data from June 2023 suggests that 59 per cent of Lebanese households (and of these 86% of female headed households), excluding refugees, faced substantial challenges in meeting their needs, primarily driven by disrupted livelihoods.

Lebanon is estimated by its government to be hosting 1.5 million displaced Syrians (who fled the crisis in Syria), 23,026 Palestinian Refugees from Syria, 180,000 Palestine Refugees in Lebanon and over 11,200 refugees of other nationalities, making it the country hosting the largest number of refugees per capita and per square kilometer in the world, according to [UNHCR](#). Bekaa governorate in eastern Lebanon hosts the largest Syrian population. While most are living in host communities, 20 per cent remain in informal settlements, with another 9 per cent in non-residential buildings such as factories and schools, according to [REACH](#). A significant proportion of Syrian households—including female-headed households—were already living in shelters that were overcrowded prior to this escalation, including some in danger of collapse, according to the [Vulnerability Assessment of Syrian Refugees in Lebanon](#), carried out by UNHCR, UNICEF and WFP in 2022. Some 45 per

cent of Palestine refugees in Lebanon are estimated to live in the country's 12 refugee camps, often in unsafe and dilapidated housing. Some 80 per cent of Palestine refugees were reported to be living below the national poverty line as of March 2023, according to [UNRWA](#). In addition, there are 176,504 Migrants in Lebanon, according to the IOM's latest [Migrant Presence Monitoring](#) published in August 2024. Mount Lebanon and Beirut governorates host the majority, with 101,178 migrants (57 per cent) and 32,885 migrants (19 per cent), respectively.

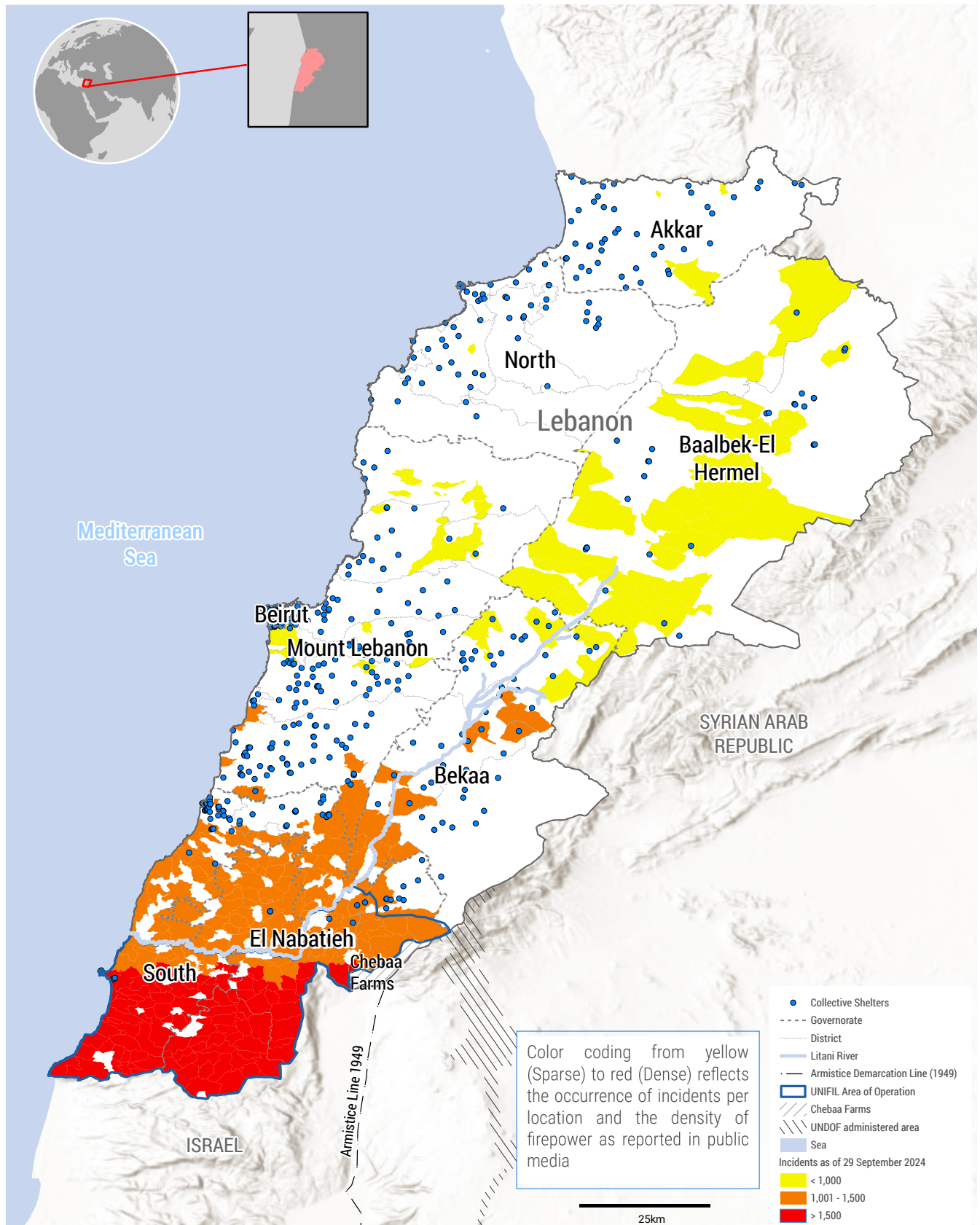
In support of the Government-led emergency response, the humanitarian community is launching this Flash Appeal to enable partners to rapidly deliver principled and effective humanitarian assistance for three months (from October to December 2024). The appeal calls for \$425,745,000 to deliver life-saving assistance and protection to one million Lebanese, Syrians, Palestine refugees in Lebanon, Palestinian refugees from Syria, and migrants. An immediate injection of additional funding will be crucial for meeting existing and new humanitarian needs of people caught in the middle of escalated hostilities.

This Flash Appeal is fully complementary to, and supportive of, the Lebanon Response Plan (LRP) 2024, which remains the primary planning framework in the country supporting an integrated humanitarian and stabilization response, co-led with the Government. Under the LRP, partners appealed for US\$2.72 billion to address the impact of the pre-existing crises in Lebanon in 2024, with just 25 per cent funding received as of mid-year. The LRP covers immediate and medium-term needs across all vulnerable population groups, including Lebanese, refugees and migrants, including through support to Lebanese institutions and public services amid the multi-faceted crisis. It is therefore imperative that funding to the LRP continues and increases during this period of crisis, alongside funding for the Flash Appeal. For an overview on response achievements to date in 2024 under the LRP please see [here](#).¹

1. The Lebanon Response Plan is pending endorsement by the LRP Steering Committee. The response dashboard is based on information reported by sector partners operating under the sector strategies discussed with and endorsed by the respective ministries.

Conflict Intensity

October 2023 - 29 September 2024

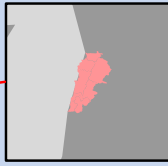


Map Sources: Incidents: compiled from public media, Collective Shelters: DRM / The designations employed and the presentation of material in this report do not imply the expression of any opinion whatsoever concerning the legal status of any country, territory, city or area or of its authorities, or concerning the delimitation of its frontiers or boundaries.

Map creation date: 30 September 2024.

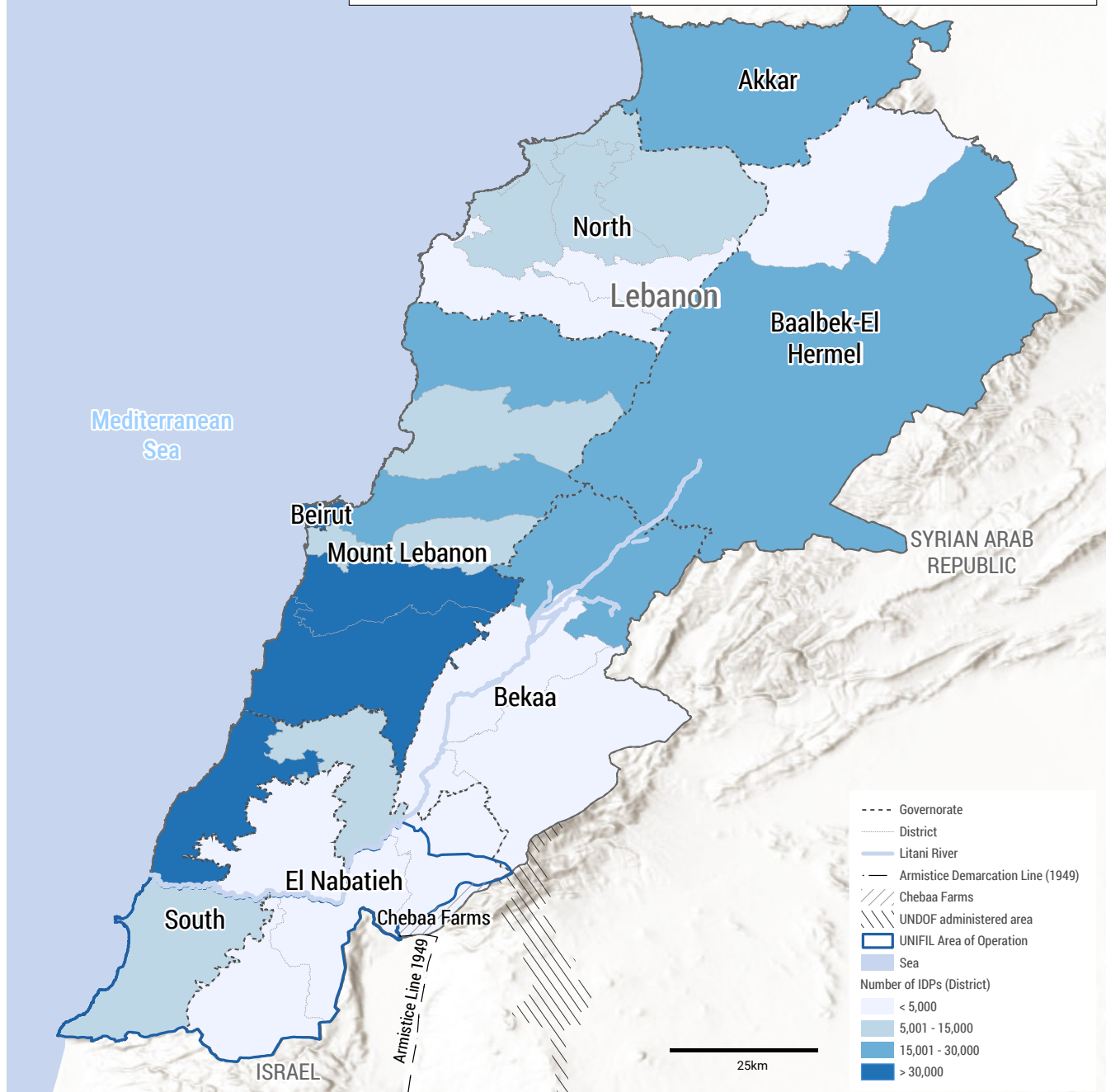
Internally Displaced population

As of 29 September 2024 - 16:00 hours



With people still on the move, the 29 September 2024 edition of the IOM DTM (round 49) accounts for 350,000 internally displaced persons (IDPs). Further data collection rounds will be conducted in coming days, and the displaced figure is expected to increase.

Based on the 2006 experience, where only 25% of IDPs were registered in collective shelters, Lebanese authorities estimate the total number of directly affected and/or displaced people as at least 1 million.



Map Sources: IOM - Displacement Tracking Matrix / The boundaries and names shown and the designations used on this map do not imply official endorsement or acceptance by the United Nations.

Map creation date: 26 September 2024.

Response

The Government of Lebanon is leading the response and in September 2024 announced the activation of national and governorate Emergency Operation Rooms and mobilization of urgent response efforts across all sectors. The cross-ministerial coordination as well as coordination with UN agencies and humanitarian partners is led by the National Disaster Response Coordination Committee (NDRCC) and the Minister of Environment. The Disaster Risk Management (DRM) Unit supported by UNDP functions as the secretariat and core team, and also supports in ensuring coordination between national, sectoral, sub-national and local levels.

The Minister of Public Health (MoPH) is overseeing the health response, with Lebanese health services striving to address the urgent health needs of people affected by the hostilities—including those displaced—while attending to the wounded in overwhelmed hospitals. In response to the impacts of the simultaneous explosions of pagers and two-way radios on 19 and 20 September, the Minister of Public Health (MoPH) activated the Command-and-Control Center (CCC) to ensure effective coordination and patient distribution to different hospitals. MoPH is now coordinating emergency care and chronic illness treatment for people. WHO has worked closely with the MoPH to prepare the Lebanese health system for the management of mass casualty events while maintaining the delivery of essential health services. WHO, UNICEF and other health partners have also provided essential health supplies and worked with the MoPH to integrate mental health and psychosocial services into hospitals. However, available health stocks are insufficient for the worsening crisis and restocking is urgent after recent events.

Similarly, the Ministry of Social Affairs has been coordinating the set-up of relief and collective centers and the distribution of essential supplies including

bedding and hygiene materials as well as meals to displaced persons in collective centers.

Communities, civil society organizations, and volunteer groups have mobilized to support the massive displacement across the country by opening their homes, donating food, clothing, bedding among other assistance and helping direct displaced persons to relief centers.

In support of the Government-led relief efforts, UN and NGO partners are mobilizing and responding with food, water and essential supplies such as mattresses and hygiene kits with distributions taking place to households, especially those in collective sites. Humanitarian partners are distributing meals, bread, water and food parcels, dignity kits and family hygiene kits, as well as core relief items, such as mattresses, blankets, pillows and sleeping bags to people. Organizations support children and pregnant and lactating women (PLW) with emergency nutrition rations and micronutrient supplements, screen children for acute malnutrition, and provide emergency health kits. Children are supported through recreational kits for children and early childhood development activities. Further, technical site assessments are undertaken for necessary repair. For continuous updates on the needs and the response please consult <https://www.unocha.org/lebanon>.

However, the response is facing multiple challenges, particularly limited funding. The Lebanon Humanitarian Fund (LHF) is undertaking an emergency allocation of \$10 million and other partners have reprioritized resources to support the immediate response. The LHF allocation is complemented by a \$10 million UN Central Response Fund (CERF) disbursement under the Rapid Response window. However, additional resources are urgently required for partners to bring in essential relief items and supplies, such as food, medicines and shelter, for immediate

response in Lebanon, and to provide support through existing services to the affected community.

Under the leadership of the Humanitarian Coordinator, the humanitarian community has been helping address access constraints faced by partners and people in need of humanitarian assistance through the established Civil Military Coordination (CMCoord) Cell and Access Working Group. Efforts to secure unimpeded access are expanding, but ensuring

guarantees for safe humanitarian access to those still in affected areas and collective shelters remains critical. Partners report ongoing challenges to reach affected people, particularly in the south, where congestion is inhibiting access to shelters with relief items.

Tragically, alongside other civilians, humanitarian staff have been killed, including two [UNHCR](#) staff.



LEBANON

Destruction following airstrike on Beirut southern suburbs
Photo: UNICEF

Strategic Objectives

S01 Provide timely life-saving multi-sectoral assistance to people affected by the escalation of hostilities.

Provide timely assistance to save lives and alleviate suffering through delivering essential basic assistance (including multi-purpose cash), shelter, food security, emergency livelihoods/income support, health and nutrition, water, sanitation, hygiene, and education to people affected by the escalation in hostilities.

Scale up logistics and telecommunications to enable an efficient and effective response and communication with affected communities (AAP).

S02 Promote the protection of civilians and civilian infrastructure—grounded in international humanitarian and human rights law, norms and standards—and place communities at the centre of the response

Promote the protection, prevention and mitigation of physical harm to civilians and civilian infrastructure, including through protection monitoring, specialized protection services, explosive ordnance risk education, and victim assistance.

Strengthen communication with affected communities to ensure accountability to crisis-affected people, multiply information on humanitarian assistance, and identify and refer individual cases to protection partners. Increase action to protect people receiving assistance against sexual exploitation and abuse (PSEA).

Scale up response, mitigation and prevention of gender-based violence and violence against children, including through bolstering existing protection systems.

S03 Support the rapid delivery and resumption of essential services in areas affected by the escalation in hostilities.

Support, complement and fill gaps in the delivery of essential services, in close coordination with local authorities, including through the delivery of critical supplies, repairs to restore life-saving and life-sustaining services, including health care and mental health and psychosocial support services, water sanitation and hygiene (WASH), education and protection, as well as the provision of emergency telecommunications and logistics.

Response Strategy

Response Strategy

The Flash Appeal response strategy is anchored in the overall approach to response in Lebanon outlined in the Lebanon Response Plan (LRP) and builds on the emergency response to the escalation of hostilities in South Lebanon under the LRP since October 2023. The primary focus of the immediate response supported through the Flash Appeal will be the rapid delivery of life-saving and life-sustaining assistance and protection to displaced people and people who remain in conflict-affected areas by humanitarian partners, in support of the Government-led relief efforts. Grounded in the strategy of the LRP, the Flash Appeal emphasizes the importance of streamlined support for the continued provision of essential assistance and services for conflict-affected people—including food, health, water, shelter, education and protection (including child protection and gender-based violence) both in areas of origin and areas of displacement, building, wherever possible on existing services and systems and in support of the Government’s capacity to coordinate and address the needs of affected communities. The Flash Appeal supersedes the former Annex to the LRP.

Guided by the humanitarian principles—humanity, neutrality, impartiality, operational independence—and a “do no harm” approach, this Flash Appeal serves as a common tool to coordinate the humanitarian community’s response. Partners will strive to provide principled, accountable, coordinated, conflict-sensitive and inclusive assistance that meets the needs of all women, girls, men and boys in an equitable and empowering way. The response will include measures to enhance accountability to affected people (AAP), prevent sexual exploitation and abuse (PSEA), ensure the response is gender-, age- and disability-sensitive, and promote protection and inclusion through all

aspects of humanitarian programmes and advocacy, building on well-established approaches under the LRP.

The response will be guided by the following key considerations:

- 1. Supporting local capacities:** The response will focus on working with, and supporting, the capacities of local actors, consisting inter alia of municipalities, local non-governmental organizations (NGOs), including women led/ women’s rights organizations, and community groups, to ensure the appropriateness, effectiveness and sustainability of the humanitarian response. Humanitarian partners will also train local actors in emergency response, site management, and protection. Considering the importance of localization in times of emergency, funding local NGOs/CSOs should be prioritized.
- 2. Putting people and protection at the centre of the response:** Protection will be mainstreamed across all sectors, with a strong focus on the protection of women, children, and people with disabilities. Accountability to Affected People (AAP) and Protection from Sexual Exploitation and Abuse (PSEA) will be prioritized, ensuring that affected populations have access to information, feedback mechanisms, and are actively involved in decision-making processes. All efforts will be exerted to ensure that the response is inclusive and gender-, age- and disability-sensitive, and to promote protection through all aspects of humanitarian programmes and advocacy.
- 3. Considering the specific needs of women and girls.** Women and girls are disproportionately affected by the crisis across all population groups, including Lebanese, displaced Syrians, Palestine refugees in Lebanon, Palestinian refugees from Syria, and migrants. As the conflict escalates, thousands of

older individuals of both sexes are facing isolation and the profound impacts of the crisis. Amongst the IDPs, 53 percent are estimated to be women urgently seeking shelter, protection, food, healthcare, and cash assistance. The challenges are particularly severe for women-headed households that have been displaced, many of whom were already food insecure and struggling to meet basic needs before the conflict escalated. These households are often led by older individuals or those with at least one disability. It is anticipated that new female-headed households will emerge as male casualties, including fatalities, increase. Targeted response to address the specific needs of women and girls, particularly female-headed households, new widows, and women and girls with disabilities is critical.

- 4. Utilizing flexible response modalities, with a ‘cash first’ approach:** The Flash Appeal promotes the use of cash assistance wherever, and whenever, it is feasible and appropriate, complemented by in-kind assistance where it is required. Key considerations for the provision and scale up of cash assistance include potential operational, programmatic and protection-related risks including ATM failures, restricted access to markets, liquidity shortages and community tensions. As a result, risk assessments and continuous situational monitoring will inform mitigation measures for the use of sector-specific and multipurpose cash and/or mixed modalities. Humanitarian actors will remain flexible and adaptive to the evolving situation, ensuring that the most appropriate response mechanisms are deployed while coordinating through relevant forums such as the ISCG and the Cash Working Group being revamped.

Challenges, Constraints & Mitigating Strategies

The response supported by the Flash Appeal will face several constraints that could hinder humanitarian partner’s ability to meet needs effectively.

These include:

- 1. Access Constraints:** The ongoing conflict, particularly in the southern regions of Lebanon, poses significant challenges to humanitarian access. In some cases, restricted access to conflict-
- 2. Strained Capacity of National Systems:** The prolonged political and economic crisis in Lebanon has severely strained national systems—particularly for public health, water, and education—and this has been compounded in the past two weeks with multiple mass casualty events overloading the health system and mass displacement impacting all other sectors. Humanitarian actors will work alongside local authorities—especially in coordination with the Disaster Risk Management (DRM) Unit and municipal authorities—as well as UNRWA to ensure a well-coordinated humanitarian response that is effective immediately but also supports future sustainability of essential services. This includes leveraging existing coordination mechanisms at national and sub-national levels and fostering partnerships with local organizations, especially women-led and grassroots entities.
- 3. Scale of Displacement:** The scale and pace of displacement is significant, placing immense strain on host communities and pressure on temporary shelters. Providing adequate shelter remains a key challenge, especially as the conflict may further escalate and lead to secondary displacement. Temporary shelters—none of which were purpose-built to host large numbers of people—must be equipped to handle large numbers of people, including through adequate food, water, sanitation, and protection services.
- 4. Logistics and Supply Chain Disruptions:** Given the ongoing hostilities, there is a high risk of supply chain disruptions, particularly for fuel, food, medical supplies, and other essential goods. The potential closure of key transport routes could significantly

hinder the receipt and distribution of life-saving assistance. Humanitarian partners will prioritize the pre-positioning of critical supplies—including food, medicine, shelter materials, and fuel—in key locations. Contingency plans for alternative supply routes will be developed to mitigate potential blockages or transport disruptions.

5. **Funding Gaps:** Without an immediate injection of additional funding, critical sectors such as health, food security, shelter and protection may face severe shortages, impacting the overall effectiveness of the response.
6. **Underlying Vulnerabilities:** Pre-existing vulnerabilities—such as widespread poverty, economic collapse, and the impact of the Syria crisis on Lebanon—exacerbate the impact of the current conflict. Many communities were already struggling before the escalation, and the humanitarian response must account for these vulnerabilities to ensure that assistance reaches those most in need, including host communities and refugees.
7. **Winter:** The upcoming winter season with rain and storms might lead to delays in reaching people in some areas. As winter nears, the situation for people is likely to grow increasingly precarious. While not as extreme as in some other regions, temperatures can drop significantly during that time. Already dire living conditions will deteriorate further, putting people at heightened risk of displacement,

asset loss, health hazards, and limited access to essential services. While the LRP includes winterization elements, sectors will reinforce the winterization response to mitigate the immediate risks posed by winter weather, protect the most vulnerable populations, particularly those living in flood-prone areas and inadequate shelters, and to ensure the continuity of essential services, including healthcare, WASH (Water, Sanitation, and Hygiene), and emergency response operations.

8. **Tensions:** While acts of solidarity have emerged across the country, tensions have also been reported. As the current crisis is unfolding in a highly tense environment with pre-existing inter-communal tensions, volatile intra-Lebanese relations, and frustration expressed towards both authorities and the international community, the risk of large-scale tensions and incidents remains high. The response will prioritize conflict-sensitive (CS) approaches, including through embedding CS considerations in cash programmes, ensuring well-coordinated distributions of in-kind assistance, and minimizing the number of assessments to avoid fatigue and raising expectations. To avoid tensions at the local level, partners maintain close coordination with the local authorities and DRM/MoSA/MoIM focal points. Tensions will be monitored throughout the response through the Tensions Monitoring System to provide real-time inputs to adapt response approaches.

Coordination & Response Monitoring

The response under this Flash Appeal will be scaled-up through the existing humanitarian coordination architecture in Lebanon, led by the Humanitarian Coordinator (HC) and the Humanitarian Country Team (HCT), and in close coordination with the Government of Lebanon.² The HCT has developed a coordinated response strategy that integrates a multi-sectoral approach designed to ensure that humanitarian assistance reaches those in need in a timely, effective, and principled manner. Activities under the Flash Appeal cater to the needs of displaced people in collective centers, in host families, in informal structures, unfinished buildings or rented spaces, and people remaining in conflict-affected areas. For people who will not be able or willing to move away from conflict areas, maintaining services and assistance close to them is imperative.

At the operational level, the Inter-Sector Coordination Group (ISCG) under the HCT will facilitate intersectoral humanitarian coordination. The ISCG, co-chaired by OCHA (lead for emergency response to the conflict), UNHCR, UNDP and RCO, within the framework and spirit of the LRP, serves as the technical coordination body and includes Sector Coordinators and Co-coordinators (UN and I/NGOs), representatives of international and national NGOs networks, the Lebanese Red Cross (LRC) and other key technical/operational focal points supporting coordination of humanitarian response.

Sectors are the backbone of the coordination structure. The sectoral responses outlined in the Flash Appeal will be coordinated through the sectors established under the LRP, which will retain their leadership arrangements and overall functionality, as well as their relationships with associated line ministries of the Lebanese government. Sector lead agencies are accountable to the RC/HC for their leadership and coordination role at sector levels. Sector lead agencies are notably responsible to ensure appropriate engagement with appointed Government counterparts, in line with humanitarian principles as

necessary, and in full coherence with the strategic guidance developed under the RC/HC leadership.

At sub-national-level, pre-existing LRP coordination structures will be utilized and adapted as necessary to bring partners together. There are currently sub-national ISCGs in South/Nabatiyeh, North/Akkar, Bekaa/Baalbek el-Hermel, and Beirut/ Mount Lebanon (BML), co-chaired or supported by OCHA, UNHCR, UNDP, which help streamline the link between sub-national and national coordination and engage with Governors and local authorities. Since the onset of hostilities in areas close to the border in south Lebanon, there have been regular subnational ISCG meetings—sometimes with the participation of national Sector Coordinators—to discuss operational challenges and coordination with local authorities to ensure conflict-affected people receive critical lifesaving assistance in a timely manner. The work of the sub-national ISCGs involves bringing together all key sectors with an operational presence to coordinate assessments, and coordinate the response to both displaced people (including those hosted in collective shelters) and non-displaced people remaining in unsafe areas, share feedback and facilitate referrals. In addition, coordination meetings among local and international operational agencies are held to facilitate two-way information sharing and discuss common priorities including safe ways to deliver assistance and minimizing people's exposure to harm.

Humanitarian partners will monitor the response under the Flash Appeal to ensure that it is timely, effective and accountable to people impacted by the hostilities. Overall progress against the Flash Appeal—including gaps and challenges—will be tracked through interim and final monitoring dashboards which will provide the status of humanitarian needs, response and gaps, as well as funding and funding gaps. These dashboards will be used to update the Government of Lebanon and humanitarian leadership on the trajectory of the response. Response achievement data will, wherever possible and meaningful, be disaggregated by sex and age.

2. UNHCR is accountable for the Syrian and other nationalities (not Palestinian) refugee response. In relation to the 3RP, UNHCR and UNDP remain co-leads at regional level.

Sectoral Response

Basic Assistance



PEOPLE IN NEED	PEOPLE TARGETED	REQUIREMENTS (US\$)	PARTNERS
1M	1M	\$47M	18

Sector Leads: UNHCR, ACF Spain

Sectoral impact:

- Vulnerable households struggling to meet their essential basic needs due to widespread displacement and the breakdown of markets in active conflict areas.
- Livelihood disruptions, leaving many without any source of income, further limiting their ability to afford essential non-food items.
- Those remaining in conflict-affected areas unable to reach functioning markets or safely access markets, heightening their vulnerability.
- Market conditions vary significantly across the country, affecting the availability of goods, prices' variations, and determining the feasibility of using cash-based interventions.

Immediate needs:

- Immediate in-kind assistance for displaced individuals in shelters and inadequate buildings. The provision of essential non-food/core relief items is critical for displaced populations residing in shelters or makeshift housing.
- Distribution of Non-Food Items (NFIs), including Core Relief Items (CRIs), including blankets, pillows, mattresses as a minimum standard and kitchen sets and solar lamps when relevant.
- In regions where markets are still functional, cash-based interventions should be activated,

empowering affected families to purchase necessary non-food items.

- Multi-purpose emergency cash assistance for households whose livelihoods have been disrupted will serve to cover essential non-food needs and help quickly restore some level of self-reliance.
- The response must remain adaptable, adjusting the type of assistance (cash or in-kind) based on displacement patterns, security levels and market availability, ensuring that timely, needs-based and safe support reaches affected populations.

Priority activities:

Basic assistance partners will prioritize the following response activities in the first three months of the response:

- Distribution of In-kind Non-Food items (NFIs/ CRIs) to IDPs in collective shelters, in inadequate/ substandard buildings and where markets are not functional or access to financial service providers and/or markets is not safe.
- Distribution of emergency multipurpose cash assistance – non-food component – to households affected by the conflict outside of collective shelter regardless of nationalities.
- Regular market assessments, conflict sensitivity and needs analysis to adapt response strategies.
- Coordination with local authorities for displaced household identification and ongoing post-distribution monitoring.

Education



PEOPLE IN NEED	PEOPLE TARGETED	REQUIREMENTS (US\$)	PARTNERS
340k	272k	\$15.4M	44

Sector Leads: UNICEF, Save the Children

Sectoral impact:

- Conflict and displacement will impact access to education and learning continuity for all children and youth in Lebanon, with at least a third of school-aged children in Lebanon, compounding learning losses from interruptions over the last five years.
- The extensive use of schools as shelters – and damaged schools – not only disrupts the immediate educational process but also has long-term consequences on the academic success and future prospects of Lebanon's children, particularly affecting the most vulnerable groups.
- Children are at risk of long-term psychological harm due to the lack of access to safe, child-friendly spaces and routine support services, affecting their overall learning, wellbeing and development.
- Children with specific protection risk factors, such as children and youth with disabilities, out-of-school children and adolescent girls, as well as children already impacted by protection risks like child labor, are in danger of falling further behind due to widening educational inequality.

Immediate needs:

- Mitigation of barriers to education at the household level to maintain education access during crisis and conflict.
- Adequate provision of equipment, supplies and other resources to support teachers and schools to ensure delivery of education services and continuity of learning.
- Appropriate, relevant and inclusive learning opportunities for children impacted by displacement and crisis, including those affected by the use of schools as shelters. Ensure the needs of adolescents'

girls and children with disabilities are met through provision of needed supplies and adequate infrastructure.

- Psychological first aid (PFA), psychosocial support (PSS), social-emotional learning (SEL), and linkages to child protection services for children in displacement sites, schools and learning centers.
- Capacity development of teachers, education personnel on online learning and Education Sector partners on crisis response, safe identification and referral, and other appropriate strategies to support children affected by conflict and displacement.
- Coordination with other sectors to ensure safety and wellbeing of children affected by crisis and displacement.

Priority activities:

- Assist households to remove barriers to education and maintain access to education, including through the provision of off-line learning management system, age-appropriate learning materials and recreational kits, emergency cash, and the establishment of child-friendly learning spaces in or near displacement sites.
- Support Ministry of Education and Higher Education (MEHE) schools, Technical and Vocational Education and Training (TVET) institutes, and emergency hub schools through the provision of appropriate equipment, supplies and other resources.
- Provision of appropriate, relevant and inclusive learning continuity, retention support, and recreational activities for displaced and conflict-affected children, both online and in-person, adapted to children's needs (including children with disabilities and other special needs and adolescent girls), ensuring equitable access to quality education.

- Provision of PFA, PSS, SEL and identification of children in need of further specialized support services by trained teachers and facilitators in schools, learning centers and in or near displacement sites.
- Training of teachers, education personnel and Education Sector partners on crisis response, PFA, PSS, SEL, and safe identification and referral, as well as other approaches to support crisis-affected children. It is critical not only to prepare the equipment and the materials for remote learning, but equally important to ensure that the teachers are well prepared to deliver this material.
- Engagement with parents and caregivers to support learning continuity and wellbeing during crisis and conflict inside and outside of displacement sites.

Food Security & Agriculture



PEOPLE IN NEED	PEOPLE TARGETED	REQUIREMENTS (US\$)	PARTNERS
1M	1M	\$131M	30

Sector Leads: WFP, FAO, CARE

Sectoral impact:

- Vulnerable households affected by the conflict struggle to meet basic food needs due to displacement and market disruptions.
- Many displaced people lack access to cooking facilities, requiring immediate provision of meals.
- Households that remain in conflict-affected areas may face difficulties accessing markets and humanitarian aid, further compounding food insecurity.
- Disruption to livelihoods, particularly for farming communities, has significantly impacted food access and income stability.
- Market functionality varies across regions, affecting the availability of food and the feasibility of cash-based assistance.

Immediate needs:

- Immediate access to life-saving food assistance for displaced households, especially those without cooking facilities.
- Food parcels and ready-to-eat meals for displaced people in shelters or households with cooking capabilities, ensuring they can meet their nutritional needs.
- Cash-based food assistance for households in areas where markets are functional and accessible, enabling them to purchase essential food items.

- Food vouchers to support displaced families in areas with functioning markets and contracted shops, ensuring safe and sustained access to food.
- One-time emergency cash assistance for farming communities whose livelihoods have been disrupted, helping them cope with loss of income and food security.
- Enable affected farmers and rural households to maintain food production, ensuring their ability to cope with the immediate impacts of the conflict on income and food security.
- Flexible and responsive aid to adapt to the evolving displacement patterns and market conditions, ensuring timely and effective support for food needs.

Priority activities:

- Hot Meal distributions.
- In-kind: Dry Parcels (two parcels per household for 1 month) or Ready To Eat meals (RTEs)
- Fresh products (complementary) split between vegetables and fruits.
- Cash covering food needs (outside of shelters).
- Ongoing monitoring and assessments to ensure that the food security and livelihoods needs of displaced and vulnerable people are met as the situation evolves.
- Unconditional cash assistance or vouchers conflict-affected farmers and rural households (including IDPs with access to land and rural households who remain in affected regions)

Health



PEOPLE IN NEED	PEOPLE TARGETED	REQUIREMENTS (US\$)	PARTNERS
1M	400k	\$40M	39

Sector Leads: WHO, UNHCR, UNRWA, AMEL

Sectoral impact:

- People trapped in conflict-affected areas face limited access to health services.
- Displaced populations outside conflict areas require urgent healthcare and continuation of essential healthcare, including trauma and emergency care and hospitalization support.
- Vulnerable groups (children, women, elderly, people with disabilities, migrants, refugees) face barriers to emergency and essential health services.
- Healthcare infrastructure is damaged and strained, needing support to continue providing emergency and essential health services, including cold cases being postponed due to emerging priorities.
- Emergency medications, medical supplies and blood products prepositioned in the hospitals are depleted and requiring urgent replenishments.
- Increased risk of infectious disease outbreaks including waterborne and foodborne disease among vulnerable populations warranting to expand and strengthen early warning surveillance and outbreak capacities.
- Mental health, sexual and reproductive health, and chronic disease management services are at risk of disruption.
- Life threatening conditions resulting from discontinuity of care for vulnerable groups with an estimated 11,600 pregnant women (around 4,000 live births are estimated in the upcoming 3 months, 600 of whom are expected to experience obstetric complications), elderly, individuals with chronic diseases, mental disorders, dialysis patients, cancer patients, etc.

Immediate needs:

- Immediate access to life-saving health interventions for conflict-affected and displaced populations.
- Coordinated medical evacuations and enhanced communication on healthcare accessibility.
- Strengthened health service capacity, including trauma care, emergency medical care, life-saving sexual and reproductive health services (minimum initial service package/MISP), hospitalization support and Primary Health Care satellite units (PSU).
- Extend support to hospitalization for life-saving and limb-saving among war wounded and displaced people.
- Procurement and distribution of emergency and essential medicine, medical and blood transfusion supplies (trauma and surgical kits, blood transfusion test kits, interagency reproductive Health Kits, cholera kits, interagency emergency health kits) to healthcare facilities.
- Immediate support is needed for continuation of immunization services, mental health and psychosocial support services, sexual and reproductive health (SRH) services, including support for victims of gender-based violence (GBV).
- Continued access to primary and secondary healthcare for both acute and chronic conditions.
- Strengthen and expand the Ministry of Public Health (MOPH) medicine and medical supplies stock management and logistic activities, warehousing and human resources.
- Enhance early warning surveillance and activate targeted supplementary response activities (including immunization).
- Maintain strong coordination mechanisms for health emergency response through Public Health Emergency Operations Cell (PHEOC) and Health

Sector, ensuring an inclusive response for all vulnerable groups affected by the conflict including Lebanese and non-Lebanese.

- Continued access to information and services from community health workers, including midwives, through mobile units and other health outreach services to displaced populations and other affected-populations.

Priority activities:

Partners will work under the leadership of MOPH, and the lead agencies and in coordination with Sector coordination team to ensure an integrated and inclusive response for all population groups and make sure the activities target Lebanese and non-Lebanese based on needs. The Health Sector coordination team both at the national and subnational levels will continue to maintain the effective coordination architecture to the health emergency response through PHEOC in a multisectoral approach.

- Coordinate medical evacuations, patient coordination and referrals including enhanced communication on healthcare accessibility.
- Ensure efficient and effective management of trauma and mass casualty including for GBV survivors, training, emergency medications, medical supplies and deployments of Emergency Medical Teams (EMT).
- Equip blood banks with adequate supplies and testing kits to support safe blood donation efforts.
- Continue Secondary Health Care (SHC) support including lifesaving and life-limb saving critical conditions, maternal and neonatal lifesaving services including emergency obstetric care, chemotherapy, acute exacerbation of non-communicable diseases.
- Primary Health Care Centres (PHCC) support including SRH services (MISP) or outreach interventions to shelters, emergency and essential medications, medical supplies for outreach interventions to collective shelters, assistive devices and daily living aids for older people.
- Strengthen referral mechanisms between collective shelters, primary and secondary health care level.
- Expand early warning surveillance capacity and implement strategies for outbreak preparedness and response (including vaccination and case management), while enhancing overall capacity to protect at-risk populations in collective shelters and hard-to-reach areas including strengthening water quality monitoring, and facilitate effective coordination and communication among health sector and multisectoral partners and stakeholders.
- Provide operational support including fuel for health facilities and establish robust M&E frameworks to continuously monitor needs and to assess the effectiveness of the response.

Nutrition



PEOPLE IN NEED	PEOPLE TARGETED	REQUIREMENTS (US\$)	PARTNERS
300k	190k	\$7.9M	15

Sector Leads: UNICEF, ACF Spain

Sectoral impact:

- Displaced children and women face increased nutritional vulnerabilities due to disrupted access to nutritious diets, caregiving practices, and essential nutrition services.
- Women, particularly pregnant and lactating women (PLW), experience heightened stress and burden in managing children's nutrition.
- The nutritional and developmental needs of children under five, school-age children, adolescents, and PLW are at risk due to displacement and lack of access to services.
- Health facilities and nutrition services are strained, especially in conflict zones and areas of high displacement, exacerbating the nutritional status of children and women.

Immediate needs:

- Establishment of mother baby corners, a safe space that enables caregivers of young children and PLW to access essential nutrition and early child development services for the displaced population.
- Controlling unsolicited provision of breast milk substitutes in emergencies is critical for protecting infant and young child optimal nutrition.
- Promote, protect and support infant and young child feeding (IYCF) in emergency and breastfeeding practices, especially in collective shelters.
- Immediate screening, referral, and treatment of malnutrition and developmental delays among children and pregnant/lactating women.

- Provision of micronutrient supplementation for children, adolescent girls, and pregnant/lactating women.
- Provision of energy-protein supplements and age-appropriate feeding for children under five.
- Effective coordination across sectors can help create a comprehensive approach to child nutrition and well-being.

Priority activities:

- Provide counseling and promotion of IYCF in emergency and early child development (ECD) practices inside collective shelters through establishment of mother baby corners informed by the infant and young child feeding rapid assessment tools.
- Provision of emergency nutrition rations, ready to use and age-appropriate complementary feeding kits, and Nutritional Supplement for 6- 59 months old children (including complementary baby food, energy nutrition ration, and micronutrient supplements)
- Screening for wasting and developmental deprivations, referral and treatment of wasting among children under 5 and PLW through health facilities, PSUs, and outreach activities and by using therapeutic food.
- Provision of ready to use nutritional supplement for PLW and adolescent girls (including energy nutrition ration, and micronutrient supplements)
- Continuous assessments to monitor and respond to evolving nutritional needs among displaced populations.

Protection



GENERAL PROTECTION

PEOPLE IN NEED	PEOPLE TARGETED	REQUIREMENTS (US\$)	PARTNERS
1M	400k	\$20M	45

Sector Leads: UNHCR, NRC

Sectoral impact:

- Mass displacement of Lebanese, Syrians, migrants, Palestinians and refugees of other nationalities disrupts community networks, and increases family separations and leads to homelessness and temporary move to collective shelters and hotspot urban areas with limited resources to absorb.
- Increased protection risks, including absence of rule of law, physical violence against civilians, increased number of casualties, homelessness, family separation and children being left unaccompanied, rise in gender-based violence and exploitation, especially of women, children, and other vulnerable groups.
- Increase in social and communal tensions that may exacerbate existing risks including difficulty to find housing, violence and exposure to harm with heightened risk for specific groups.
- Limited access to shelters, basic services, and protection support, particularly for refugees, migrants, and people unable to relocate from conflict zones leads to vulnerable people unable to move out of dangerous zones increasing their exposure to violence, attacks and risks.
- Family and community networks are disrupted, heightening the demand for child protection (CP) and gender-based violence (GBV) emergency and longer-lasting case management and psychosocial support.
- Infrastructure disruptions, such as telecommunications and internet outages, hinder communication and service provision for affected populations with increased needs to support community networks.
- Migrant domestic workers are left behind, locked up or otherwise prevented from relocating or evacuating by their employers, or left behind or in public places without shelter, food, or safety exposing them to risk of exploitation, trafficking, violence and exposure to harm.
- Increased border movements of Lebanese and Syrians to Syria and across the region.
- Increased number of migrants seeking to return to the country of origin and requiring assistance to do so.
- Enhanced the protection under International Humanitarian Law (IHL) and International Human Rights Law (IHRL), particularly for marginalized or at-risk groups such as women, children, refugees, migrants and IDPs. Strengthened accountability mechanisms for violations and abuses, including war crimes and the six grave violations against children, and fostered a culture of respect for human rights.
- Support to protection staffing and community structures is needed as protection staff and other humanitarian workers have faced displacement and loss of family members.

Immediate needs:

- Upscaled protection services, including upscaled emergency case management, legal aid, and psychosocial support, particularly for high-risk individuals such as women, children, and persons with disabilities.
- Reinforcement of protection monitoring, including tracking protection concerns and providing referrals to essential services.
- Support for family tracing and reunification services to ensure systems to prevent child separation and

to ensure immediate support for separated families during displacement.

- Access to safe shelters and affordable housing for refugees and migrants, alongside protection from exploitation and gender-based violence.
- Increased support to specialized services for older persons and persons with disabilities who are most vulnerable, including assistive devices, non-food items such as adult diapers and other aids.
- Humanitarian evacuations for vulnerable groups across populations from unsafe areas to safe locations or their countries of origin. This includes migrant workers unable to leave or forcibly left behind by employers, and other migrants in a vulnerable situation, including children.
- Increased community mobilization through upscaled networks of volunteers to support awareness raising and access to critical protection information and services for all affected populations.
- Establish systems for monitoring and reporting IHL and IHRL violations, including war crimes and the six grave violations against children, and patterns to ensure accountability and inform humanitarian responses.

Priority activities:

- Provision of emergency protection case management and psychosocial support interventions in collective shelters and through mobile and center-based activities, including for migrant workers.
- Cash for protection in emergency cases.
- Mainstream and integrate counter-trafficking into the current emergency (prevention, awareness raising, protection assistance to victims of trafficking, capacity building of national and international CSOs on counter-trafficking)
- Awareness raising and sensitization of communities, humanitarian and governmental actors on their rights, employers' obligations vis a' vis domestic workers, protection from unexploded ordinances and remnants of war, access to services, humanitarian and protection principles and PSEA.
- Community engagement and outreach through trained community structures, (including telecommunication needs); and two-way communication, complaint, and safe referrals and accountability to affected population (AAP) and awareness and information provision on protection related topics including access to services, legal support, HLP, and access to documentation.
- Provision of assistive devices and tailored support to persons with disability and older persons and other persons with specific needs.
- Protection monitoring to ensure protection risks are identified and analyzed for cross-sectoral information sharing and mainstreaming through local and international actors.
- Development and implementation of reporting mechanisms for IHL and IHRL violations, including war crimes and the six grave violations against children, that allow confidential reporting and safeguard the security of individuals.
- Protection coordination and protection mainstreaming support through enhanced cross-sectoral work.
- Support with emergency evacuations of migrants to their country of origin.

CHILD PROTECTION



PEOPLE IN NEED	PEOPLE TARGETED	REQUIREMENTS (US\$)	PARTNERS
400k	200k	\$13.65M	42

Area of Responsibility Leads: UNICEF, TdH-Italy

Sectoral impact:

- Children affected by conflict face heightened risks of violence, abuse, neglect, and exploitation, including separation from families, worst forms of child labour, and exposure to unexploded ordnance.
- Displacement increases the vulnerability of unaccompanied and separated children (UASCs), requiring urgent protection and alternative care solutions, as well as urgent family tracing and reunification interventions.
- Increased need and limited access to psychosocial support (PSS) and specialized mental health services for children, caregivers, and foster families in displaced settings.
- Disrupted community networks and family separations create challenges in maintaining child protection services, family reunification, and ensuring safe environments.

Immediate needs:

- Immediate access to child protection emergency case management for children at risk, including those separated from families requiring alternative care solutions, family tracing and reunification.
- Strengthening coordination of emergency case management systems with judicial and law enforcement agencies to ensure the safe and effective reporting and handling of child protection cases, particularly for UASC.
- Provision of PSS and psychological first aid (PFA) for children and caregivers affected by conflict.
- Community-based protection mechanisms to identify children at risk, supported by trained local actors.
- Access to specialized services for child survivors of violence, including gender-based violence (GBV) and mental health care.

- Enhanced outreach and communication on child protection issues through radio, social media, and other remote means, particularly for children in unsafe or hard-to-reach areas.
- Establishment of child-friendly spaces within shelters and informal sites, with dedicated child-friendly space facilitators, to provide a safe space for children to cope with the challenges of the emergency through recreational activities, psychosocial support and non-formal education, and for the early and safe identification of child protection risks.

Priority activities:

- Provision of emergency CP case management, including emergency cash assistance, for UASC, children at risk of violence, abuse, neglect, and exploitation, and other children affected by displacement and armed conflict.
- Provision of multi-layered psychosocial support interventions including PFA, recreational activities, awareness raising sessions on key child protection concerns (such as violence against children, child trafficking, and child labour), community-based PSS, and focused PSS for girls, boys and caregivers; using modalities adapted to the emergency context, such as provision of PSS kits to facilitate peer to peer interaction, and mobile child protection teams for hard to reach areas.
- Dissemination of information on available CP services, access to CP services, the dangers of landmines, white phosphorus and explosive remnants of war.
- Equipping child friendly spaces, and training frontliners and community members on PSEA, child safeguarding, child friendly PFA GBV, early and safe identification of child protection risks, including child trafficking, to be assigned as child-friendly space facilitators.

GENDER-BASED VIOLENCE



PEOPLE IN NEED	PEOPLE TARGETED	REQUIREMENTS (US\$)	PARTNERS
300k	110k	\$8M	45

Area of Responsibility Leads: UNFPA, UNHCR

Sectoral impact:

- Gender-based violence (GBV) risks are intensified at different phases of emergencies and crises, introducing an increased manifestation of GBV among the affected population.
- Women and girls, particularly those displaced or in unsafe areas, face increased risks of GBV during displacement and conflict, including sexual violence, physical and emotional abuse, and exploitation.
- Displacement disrupts access to essential GBV services, including case management, psychosocial support, and safe shelters.
- Survivors of GBV, especially those with disabilities and mental health issues, and migrant domestic workers held against their will by their employers, have limited access to appropriate care and protection services, including safe shelter.
- Migrant domestic workers are prevented from relocating to safer areas, and/or returning to their country of origin, or put on the street, often without their own documentation, resources or access to shelter or support, leaving them exposed to violence, exploitation and GBV.
- Safe spaces and safe shelters are affected by insecurity and need upscaled support and partial shift to mobile modalities to ensure the protection of women and girls and others at risk of GBV.
- Community awareness and engagement on GBV prevention, response, and available services are limited, particularly for marginalized groups.

Immediate needs:

- Ensure access to GBV case management services, including emergency cash injections, legal aid,

psychosocial support, life-saving health services and safe shelter services for all survivors.

- Upscaling of GBV specific hotlines and safe referrals of survivors to GBV quality services, including clinical management of rape.
- Provision of dignity kits for women and girls in reproductive age in conjunction with awareness sessions, inside and outside of collective shelters
- Increase availability of safe spaces for women and girls to access protection services and psychosocial support as well as PSEA awareness.
- Strengthen support for safe shelters for GBV survivors, including those with disabilities and mental health concerns.
- Upscale community engagement and awareness-raising on GBV prevention and available services including for PSEA, particularly through diverse languages and formats.
- Capacity building for GBV responders, including training on case management, psychosocial support, and handling child survivors.
- Coordination with health and protection sectors to ensure GBV services are integrated and available across the response.

Priority activities:

- Distribution of dignity kits for women and girls of reproductive age.
- Provision of GBV case management services including through emergency/ remote modalities.
- Distribution of emergency cash assistance for GBV survivors and those at risk of GBV
- Awareness and sensitization initiatives inside and outside of collective shelters to prevent GBV and ensure enhanced access to services.

- Provision of psychosocial support interventions including in women and girls' safe spaces (WGSS) through upscaling existing and new mobile WGSS and SRH mobile units.
- Upscaling and support to safe shelters, including accessibility for survivors with disability.
- Enhance GBV coordination, GBV risk assessments and analysis of needs associated with the conflict and displacement to inform the response.
- Capacity building of front-line workers and community groups on GBV.
- Support to GBV mainstreaming and risk mitigation across sectors.

Shelter



PEOPLE IN NEED	PEOPLE TARGETED	REQUIREMENTS (US\$)	PARTNERS
1M	720k	\$44.5M	18

Sector Lead: UNHCR, NRC

Sectoral impact:

- Large-scale displacement leaves families in need of adequate shelter, with many residing in collective sites, unfinished buildings, or informal settlements.
- Families living in host arrangements are also affected, facing uncertain and unstable shelter conditions.
- Families trapped in conflict zones or unable to relocate face ongoing risks, with homes sustaining damage and further deterioration in unsafe environments.
- Vulnerable groups, including female-headed households, persons with disabilities (PWD), migrant domestic workers and migrant families, and families with protection risks, face heightened challenges in securing safe, private, and secure living spaces.
- Overcrowding in collective shelters and inadequate housing conditions pose risks to safety, hygiene, and protection, particularly for women and children.

Immediate needs:

- Equal access to adequate and secure shelters for displaced families of all nationalities, including shelter kits (to both inadequate urban shelters and to informal settlements), cash assistance, and repairs to collective sites.
- Targeted support for vulnerable groups, including women, persons with disabilities, and those at risk of exploitation or violence.

- Close coordination between local authorities and humanitarian actors to monitor shelter conditions, assess needs, and ensure safe and dignified living conditions.
- Comprehensive exit strategies for collective sites, ensuring that displaced families have access to long-term housing solutions.

Priority activities:

- Cash for shelter to support those who relocated to shelters outside collective sites and informal settlements.
- Repair of collective sites including provision of safe and private spaces for women and girls when feasible. This will include:
 - Repair windows, doors and common spaces.
 - Partitioning of spaces to increase hosting capacity (this includes partitioning of large indoor spaces);
 - Repair of existing water and sanitation facilities inside buildings.
 - Repair of electrical connections and installation of lighting fixtures where applicable.
- Shelter adaptation for PWD.
- Distribution of fire extinguishers.
- Installation of solar panels and water heaters where applicable.
- Provision of weatherproofing kits for those newly displaced to Informal Settlements (IS).
- Provision of shelter sealing off kits (mainly to unfinished bldgs./partly damaged shelters).

Site Management And Coordination



PEOPLE IN NEED	PEOPLE TARGETED	REQUIREMENTS (US\$)	PARTNERS
1M	203k	\$8.4M	10

Sector Leads: IOM and UNHCR (TBC)

Sectoral impact:

- Large-scale displacement leaves families in need of adequate shelter, with many settling in open public areas or private sites that were not designed to host IDPs. These sites are not equipped to meet the scale of needs, putting families at risk of eviction, safety and security risks, and exclusion from assistance.
- Overcrowding in collective sites and inadequate living conditions pose risks to safety, hygiene, and protection, particularly for women and children.
- Female-headed households, persons with disabilities, and families with protection risks, face heightened challenges in securing safe, private, and secure living spaces.
- Non-Lebanese individuals, including refugees and migrants, face access barriers to collective sites, increasing their difficulty in finding safe, private and secure living space.
- Increased protection, social and communal tensions, as well as health risks due to overcrowding in collective sites.
- Large-scale displacement and humanitarian needs are overwhelming existing local authorities and humanitarian actors' resources.
- Site management and coordination are under strain. Existing coordination mechanisms may become overwhelmed due to the sudden surge in displaced populations, complicating the effective organization and coordination of assistance to collective sites.
- Schools and other public service sites are being used as shelters, which disrupts education which will need alternative solutions to overcome.

Immediate needs:

- Large-scale displacement requires opening of new sites or expanding the capacity of existing ones to relocate those in self-settled sites and decongest overcrowded sites.
- Rapid deployment of Site Management Support teams is necessary to scale up site management operations effectively and support the monitoring of services to inform humanitarian assistance.
- Targeted specialist support is needed for vulnerable groups, including women, persons with disabilities, and those at risk of exploitation or violence.
- Ensure access for non-Lebanese populations, including refugees and migrants, to collective sites by either identifying suitable sites or facilitating access to existing sites, while closely monitoring communal tensions.
- Monitoring communal tension and protection risk within sites is essential to identify risks and develop mitigation measures.
- Frequent assessments are crucial to prevent gaps in service delivery, ensuring that prioritization meets the most urgent needs.
- Capacity building is needed to strengthen site management, coordination, and protection with the increasing number of collective sites.
- Expand sector membership to include local NGOs and civil society actors involved in the displacement response and ensure community engagement in planning efforts.

Comprehensive exit strategies are needed for collective sites to ensure displaced families have access to long-term housing solutions.

Priority activities:

- Provide Site Management Support to the Government of Lebanon through mobile teams to address site management gaps and assist relevant actors in monitoring and coordinating services. This will help ensure predictable delivery of protection and other services, allowing for flexible approaches based on the context.
- Support local authorities in mapping self-settled sites and facilitating the movement of IDPs, as well as decongesting overcrowded collective sites where necessary through community communication and information sharing.
- Support local authorities and other stakeholders to identify potential displacement sites, other than schools, in preparation for population influxes and/or relocation needs.
- Identify key needs and services across collective displacement sites and conduct site-level referrals for assistance to humanitarian service providers.
- Distribute essential materials and kits to collective sites to enable emergency site maintenance, helping to preserve living standards and safeguard the privacy and dignity of displaced populations.
- Set up community feedback channels where possible in collective sites to ensure operational accountability of service providers.
- Map community engagement structures, such as site committees or focal points, to improve site governance and communication between displaced populations and authorities.
- Support the identification of protection risks and the establishment of safe referral pathways at collective sites in coordination with Protection Sector partners.
- Build capacity for actors involved in site management, including training on site management, coordination, and safe, age, and gender-appropriate response. This includes protection mainstreaming and GBV core concepts in coordination with Protection and GBV partners to scale up operations effectively.
- Provide technical site management and information management support to the Government of Lebanon in managing sites, developing site exit strategies, creating site closure checklists, and emergency site response tools, while enhancing coordination through improved information management capacity.

Social Stability



PEOPLE IN NEED	PEOPLE TARGETED	REQUIREMENTS (US\$)	PARTNERS
1M	1M	\$28M	20+

Sector Leads: UNDP, UNHCR

Sectoral Impact

- Heightened risks of conflict escalation and instability.
- Increased tensions and security challenges in host areas
- Conflict and displacement crisis disproportionately impacting disproportionate impact women and girls, including women-headed households and women with disabilities.
- Local authorities and institutions are struggling to maintain essential services and respond to the crisis, affecting public services, safety, recovery efforts, and effective management of displacements.

- Disruption of essential infrastructure (cleaning, repairs, and rehabilitation) is impacting community recovery and access to critical services.
- The civilian population, including vulnerable groups such as women, children, and people with disabilities face immediate risks from the presence of explosive ordnance contamination.
- The civilian population, including vulnerable groups such as women, children, and people with disabilities face immediate risks from the presence of explosive ordnance contamination.
- Vulnerable groups like women, children, and people with disabilities face immediate risks from presence of unexploded ordnance (UXO), landmines, and explosive ordnance contamination.
- Without urgent intervention, hazardous areas will remain unsafe, delaying humanitarian assistance, safe returns, recovery, and resettlement efforts.
- Lack of awareness about explosive ordnance risks seriously threatens civilian safety in conflict-impacted area

Immediate needs:

- Regular monitoring and analysis to detect risks of conflict escalation and guide conflict-sensitive crisis response efforts.
- Strengthened crisis coordination capacity for local and national authorities to manage emergencies, displacements and maintain essential services.
- Addressing important gaps in operational and emergency response capacities of civil defense and fire brigade.
- Bolstering capacities of municipalities to effectively, inclusively and in a gender-sensitive manner manage

additional challenges posed by displacements, including on critical service delivery.

- Humanitarian mine action interventions including rapid surveys and assessments of explosive ordnance contamination, emergency clearance, inter-sectoral coordination of response activities, and risk education to safeguard affected populations and efficiently manage the response.
- Medic support for explosive ordnance disposal (EOD) operations and proper management of data related to explosive hazards to inform prioritization for clearance and mitigation efforts.
- Support to Humanitarian Mine Action on Explosive Ordnance Risk Education (EORE) and rapid assessments/ marking of contaminated zones.

Priority activities:

- Tension monitoring and conflict sensitivity mainstreaming, to inform the response and mitigate tensions
- Support to emergency crisis response capacities of national institutions, including Disaster Risk Management (DRM) operation rooms at the national and sub-national levels, civil defense and fire brigades
- Support municipalities, union of municipalities, line ministries and public institutions, to ensure effective, gender sensitive and inclusive management of displacements and delivery of essential basic services
- Support to Humanitarian Mine Action, on the explosive ordnance risk education (EORE) and rapid assessments/ marking of contaminated zones

Water, Sanitation And Hygiene (WASH)



PEOPLE IN NEED	PEOPLE TARGETED	REQUIREMENTS (US\$)	PARTNERS
1M	1M system-level 350K direct support	\$38.4M	21

Sector Leads: UNICEF, World Vision

Sectoral impact:

- Displacement and conflict severely disrupt access to safe water and sanitation, particularly for those in temporary shelters and conflict zones.
- Critical water supply and wastewater infrastructure face operational risks due to power outages, fuel shortages, and direct damage from hostilities.
- Overstretched WASH services cannot meet the growing needs of displaced populations, leaving vulnerable groups without essential hygiene and sanitation support.
- Limited availability of water trucking and desludging services, especially in areas cut off from public services and/or hosting large numbers of IDPs, further exacerbates public health risks, incl. cholera outbreak.
- Displaced populations, especially women, children, people with disabilities and older persons, are at risk of poor hygiene and sanitation conditions, which can lead to health complications.

Immediate needs:

- Immediate repair and maintenance of damaged water and sanitation infrastructure, including the provision of fuel, chlorine, and other essential supplies.
- Provision of emergency water services, including water trucking and installation of temporary potable water distribution points for areas cut off from the public water supply.
- Access to emergency sanitation facilities, including latrines, showers, and handwashing points, particularly in displacement sites. Provision of cleaning materials for displacement sites.

- Distribution of hygiene kits, baby kits, menstrual hygiene kits, and incontinence kits, along with hygiene awareness campaigns.
- Bottled water and water treatment materials (chlorine tablets) for areas without access to safe drinking water.
- Support for displaced populations outside of temporary shelters through cash assistance or in-kind support to meet their water, sanitation, and hygiene needs.

Priority activities:

- Emergency repair, operation, and maintenance support for critical water supply and sanitation systems in areas hosting displaced persons, including backup generators and fuel provision.
- Emergency repair, operation and maintenance support to water supply and sanitation systems impacted by hostilities (temporary measures), including backup generators and fuel provision.
- Provision of emergency water and sanitation services in temporary collective shelters (existing and new ones) and preparation of new temporary collective shelters. Support the community-led structures for maintaining the cleanliness of the sites and site-level water treatment.
- Provision of essential hygiene items (including menstrual hygiene, baby and incontinence specific items) and awareness raising, including on UXOs (all shelter types).
- Provision of bottled water in the initial phase of displacement.
- Installation of emergency water points for areas cut from public water supply and with limited alternatives, including emergency water trucking if needed.
- Repair and maintenance support to public drinking water points in the areas hosting IDPs.

Livelihoods



PEOPLE IN NEED	PEOPLE TARGETED	REQUIREMENTS (US\$)	PARTNERS
421k	92k	\$11.2M	40

Sector Leads: UNDP, Mercy Corps

Sectoral impact:

- Closure/suspension of work of micro, small, and medium-sized enterprises (MSMEs) due to direct shelling, economic uncertainty, displacement, and security risks leading to increased unemployment and indebtedness.
- Key sectors such as the production of goods and equipment have been severely impacted leading to a decrease in the production of basic goods, along with unemployment of full-time, part-time, and daily workers likely to decrease the supply level, disrupt supply chains, and increase prices.
- Damage and destruction of essential infrastructure such as electricity, communications, water supply, roads, and drainage make it difficult for businesses to operate and for workers to access their places of employment, reducing production capacity.
- Increase of need for livelihood opportunities leading to an increase in informal employment causing disruptions in the formal economy, increase in tensions, exploitation of labor, gender-based violence, and increased mental health problems, especially for the most vulnerable population (women, youth, refugees, migrants, and people with disability).

Immediate Needs:

- The prolongation of the ongoing crises coupled with the recent escalation of conflict requires direct interventions to support people in their livelihoods and bridge gaps. Temporary decent livelihood opportunities for affected populations (including women, people with disabilities, refugees, migrants, and Lebanese) inside and outside the collective shelters are highly needed.
- Affected Micro, Small, and Medium Enterprises (MSMEs) urgently need wage subsidies, electricity, etc. to resume critical production and/or their

economic activity, and the production of essential supplies with the immediate need to mobilize emergency financing (grants) for MSMEs for national production of non-food items.

- Tensions around livelihoods and access to cash were high before the crisis and competition over assistance and access to jobs can be a major trigger. The involvement of local host communities and the displaced is crucial to ensure social stability.
- Area-based approaches in rural and urban settings to tackle the challenges of livelihoods - especially for women and youth - through integrated approaches are needed recognizing that a complex interplay of economic conditions and social interactions determine the opportunities available.

Priority activities:

- Sector-wide rapid needs assessment to determine existing livelihood gaps and opportunities and identify skills of the displaced and hosting population, as well as emergency support needs by affected micro, small, and medium enterprises (MSMEs).
- Cash for work/employment intensive investment activities, to ensure temporary livelihood opportunities for affected populations. Such activities can include involving IDPs and host communities to support municipalities in rehabilitation work for essential infrastructures (focus on markets needed for response), debris/rubble removal interventions, cleaning around and inside collective shelters, as well as support to distributions and other emergency activities under different sectors (such as WaSH). It will also include childcare services to facilitate the participation of women.
- Emergency grants/wage subsidies to MSMEs that have been affected directly or indirectly by the conflict to enable continuation and/or resumption of operations for community support.

Logistics



REQUIREMENTS (US\$)

\$10.8M

PARTNERS

15

Sector Leads: WFP

- Sectoral impact
- Impediments and/or limitation of importation of relief items and fuel.
- Impact of security access, road congestion and damage creating challenges for relief cargo to reach affected areas.
- Limited operational points of entry into Lebanon to absorb increased humanitarian relief.
- Need for deconfliction of cargo movement in affected areas.
- Rapid changes in situation and scale of planned response to cater for increased number of beneficiaries necessitating coordinated logistics response and logistics information & data sharing.
- Temporary suspension of commercial air services at Beirut International Airport.

Immediate needs:

- Importation, and increase consolidation, temporary storage and transportation capability to ensure uninterrupted provision of critical humanitarian goods (food, health supplies, WaSH materials) to affected populations.
- Access to minimum fuel stocks of fuel and ensure access to fuel for humanitarian partners to cater for operations support and essential services including healthcare, WaSH interventions, and logistics operations.
- 15, reliable and deconflicted cargo transport options for the humanitarian community to reach sites with the highest needs in light of road and infrastructure damage and insecurity.
- Access to real-time logistics data including accessibility of roads in affected and hard to reach areas.

- Efficient and adequate logistics and transport contracting to avoid duplication and market disruption leading to cost inflation.
- Access of humanitarian staff to ensure the continuity of humanitarian operations.

Priority activities:

Logistic Cluster

- Establish and operate cargo consolidation facilities at entry points to receive imported cargo.
- Establish and operate agile and/or mobile temporary storage facilities at key deconflicted locations in the South to receive and dispatch humanitarian cargo.
- Coordinate, facilitate, and as required, operate transportation and convoy movements to access hard-to-reach areas.
- Secure contingency fuel seed stock to enable key sectors and logistics operations
- Provide logistics coordination, and information management support to humanitarian responding organizations to reduce duplication of efforts and increase operational efficiency.

Humanitarian Air services

- Provide humanitarian air services to ensure that aid workers and light humanitarian cargo can quickly and safely reach those most in need. UNHAS will facilitate relocation of humanitarians from key locations. The flight schedule will be developed in consultation with the humanitarian community to ensure alignment with on-ground needs. This service will be operational until commercial air connections to Beirut are restored, with provisions for review and extension if required.

Emergency Telecommunications



REQUIREMENTS (US\$)

\$200k

Sector leads: WFP

Sectoral impact:

- The recent events exacerbate the risk of severe disruption or damage to the national telecommunications infrastructure. Reliable and independent communication networks are paramount to contribute to the safety of humanitarian staff and effective coordination of life-saving humanitarian assistance. Alternative means of accessing information and communication can also support affected communities in accessing and reporting on humanitarian assistance and connecting with closed ones.

Immediate needs:

- Coordination: Continue to engage closely with the local information and communication technology (ICT) working group to strengthen coordination among local actors, leverage humanitarian organizations' capacity and assess any additional information and ICT gaps.
- Information Management: report and share information on the status of local infrastructure and accessible emergency telecommunications services in-country.

- Preparedness: maintain and strengthen inter-agency ICT preparedness measures taken in the event the humanitarian community requires dedicated shared ICT services.
- In the case gaps are significant, a cluster activation shall be considered to provide further accountability, dedicated capacity, and provision of Emergency Telecommunications Cluster (ETC) services in identified common operational areas.

Priority activities:

- Strengthen coordination and assess gaps through the local interagency ICT working group. Local actors' engagement (such as UN, NGOs, communities' leaders, mobile network operators, internet service providers) will be crucial and prioritized to avoid duplication of efforts, leverage existing capacity, and limit any impact of the local market.
- Continue strengthening and coordinating inter-agency ICT preparedness measures locally and with global ETC partners to leverage existing local capacity and be ready to mobilise international capacity in the form of staffing, equipment and bandwidth as needed.
- Working with local authorities to ease importation and usage of telecommunications equipment and services in-country for humanitarian activities.

Coordination, Community Engagement & Protection Against Sexual Exploitation And Abuse



REQUIREMENTS (US\$)

\$1.25M

Sectoral Impact:

- Vulnerable groups, including women, children, and people with disabilities, are disproportionately affected by the crisis, requiring focused protection and inclusion in humanitarian planning.
- Humanitarian operations and aid delivery face challenges due to restricted access and security risks, affecting the timely provision of assistance to those in need.
- Active conflict zones, restricted movement, disruptions in telecommunications and networks, travel limitations, restricted access to intervention sites, and the need for remote supervision of field staff increase the risk of Sexual Exploitation and Abuse by aid workers, further hindering community acceptance and access
- Humanitarian workers and civilian facilities are at risk, necessitating strong advocacy for the protection of civilians and respect for International Humanitarian Law.
- Lack of coordinated, timely data and analysis impacts the effectiveness and accountability of the humanitarian response.

Immediate needs:

- Strengthened inter-agency coordination to ensure effective, inclusive, and principled humanitarian response.
- Improved monitoring, data collection, displacement tracking, and analysis to inform decision-making and response planning.
- Advocacy for safe humanitarian access and protection of civilians, including relief workers and civilian infrastructure.

- Coordination mechanisms to integrate protection, gender, sexual exploitation and abuse (SEA) disability, and accountability to affected populations (AAP) into humanitarian action.
- Enhanced civil-military coordination to facilitate the safe transport and delivery of aid to those in need.
- Priority activities:
 - Support humanitarian actors in delivering coordinated, evidence-based, and inclusive humanitarian planning and action.
 - Facilitate data collection, analysis, and dissemination through regular information products (reports, datasets, dashboards, bulletins).
 - Produce Displacement Tracking Matrix (DTM) data on a regular basis to inform the humanitarian response to IDPs across Lebanon, both in and outside of collective sites.
 - Integrate protection, gender, GBV, disability, and other considerations into response planning and coordination mechanisms.
 - Support working groups focused on gender, inclusion, AAP, and protection from sexual exploitation and abuse (PSEA) Network.
 - Maintain sustained humanitarian access and monitor beneficiaries' access to assistance.
 - Provide technical and strategic advice to humanitarian leadership.
 - Enable timely emergency operations when needed.

Importance of Community Engagement: Community engagement places people affected by emergencies at the heart of decision-making, strategy development and activities to protect and assist their communities. Community engagement involves using or establishing two-way communication channels to address people's

needs, concerns, feedback, and complaints, in order to inform—and where necessary, adjust—the response. Engaging communities—including different groups impacted by a crisis, such as women, children, people with disabilities or the elderly—from the outset of a response improves the quality and effectiveness of programmes while building community acceptance and trust in humanitarian stakeholders.

Centrality of Protection against Sexual Exploitation and Abuse: Humanitarian actors are committed to creating an environment where individuals affected

by crises feel safe, respected, and able to access the protection and assistance they need, free from the fear of exploitation or abuse by any aid worker. These actors will implement services founded on the principle of zero tolerance for sexual exploitation and abuse (SEA), including raising awareness within affected communities and establishing complaint and feedback mechanisms to handle SEA allegations. Humanitarian workers will conduct SEA risk assessments in their programs and take proactive measures to minimize risks, treating every allegation with the utmost seriousness.

How to support the Lebanon Flash Appeal

By making a financial contribution towards the Flash Appeal

Financial contributions to reputable aid agencies are one of the most valuable and effective forms of response in humanitarian emergencies. This page indicates several ways to contribute towards the response to Lebanon. Public and private sector donors are invited to contribute cash directly through the Flash Appeal. To do so, please refer to cluster/sector indicated.

By supporting the Lebanon Humanitarian Fund

The Lebanon Humanitarian Fund is a Country-based Pooled Fund (CBFP). CBFPs are multi-donor humanitarian financing instruments that receive unearmarked funds for allocation in response to humanitarian needs prioritized in the field through joint planning and an inclusive decision-making process. The LHF promotes coordinated humanitarian response and supports the implementation of the Lebanon Flash Appeal.

For more information on CBFPs please visit: www.unocha.org/our-work/humanitarian-financing/country-based-pooled-funds-cbpfs and follow @CBFPs on Twitter.

By becoming a donor to the Central Emergency Response Fund

The Central Emergency Response Fund (CERF) is a fast and effective way to support rapid humanitarian response. The Secretary-General has called for total annual CERF contributions of one billion dollars

– a goal that the UN General Assembly endorsed. CERF provides immediate funding for life-saving humanitarian action at the onset of emergencies and for crises that have not attracted sufficient funding. Contributions are welcome year-round, whether from governments or private sector donors.

The CERF needs regular replenishment. Please see this link on how to become a CERF donor: www.unocha.org/cerf/donate

By engaging in public support, joint advocacy and innovative solutions

Support employees, families and communities affected by disasters and conflict. Partner with the United Nations to undertake joint advocacy and work alongside humanitarian responders to identify and share innovative solutions. Prepare for and respond to disasters and conflict.

By reporting your contributions to OCHA's Financial Tracking Service (FTS)

Reporting contributions through FTS enhances transparency and accountability and gives us the opportunity to recognize generous contributions. It helps us to identify crucial funding gaps. Please report contributions to fts@un.org or by completing the online form at fts.unocha.org.

When recording in-kind contributions on FTS, please provide a brief description of the goods or services and the estimated value in US\$ or the original currency if possible.

FLASH APPEAL
LEBANON