

Update on

UNHCR's Strategic Partnerships and Coordination

2024 - 2025

Dominique Hyde

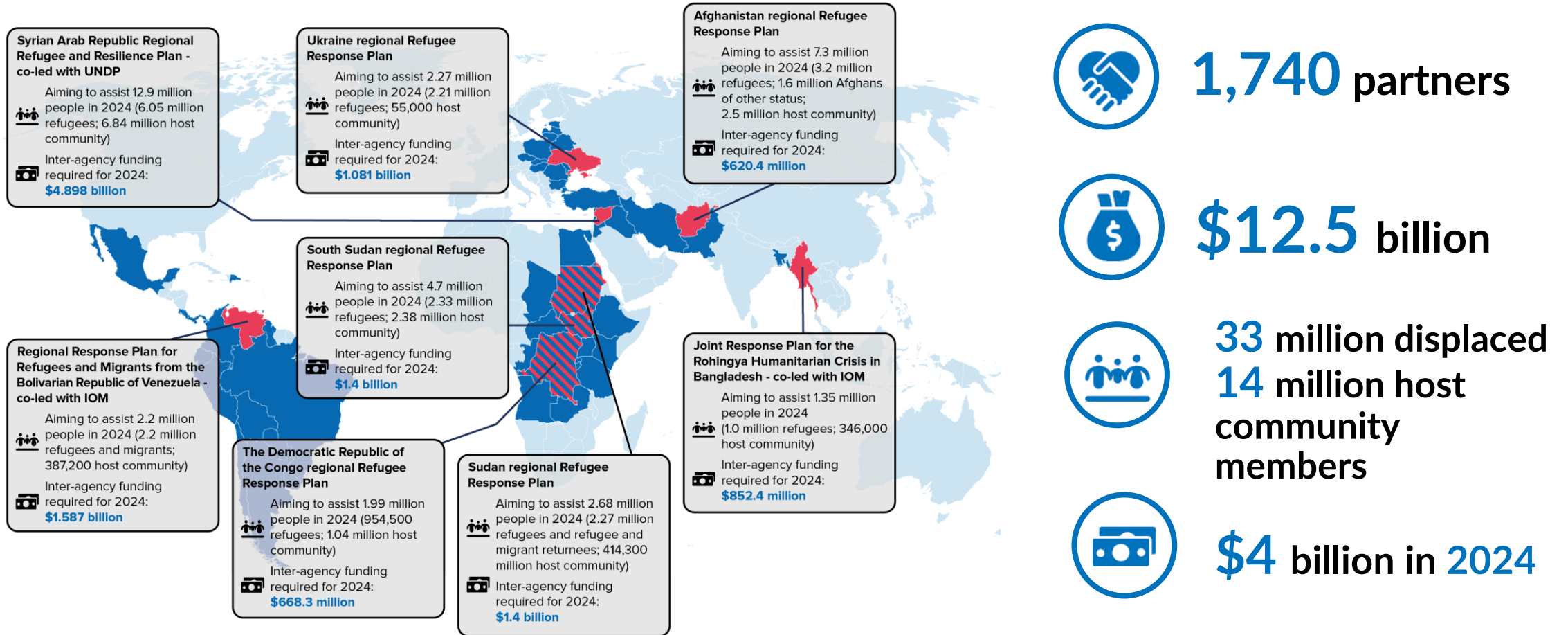
Director, Division of External Relations

Partnership strategy

- Affected populations at the centre
- Upholding protection principles
- Championing localization
- Assisting governments on responses to displacement & statelessness



Regional Response Plans



1,740 partners



\$12.5 billion



33 million displaced
14 million host
 community
 members



\$4 billion in **2024**

Figures for financial requirements, people in need and people targeted are preliminary and subject to ongoing operational planning, pending finalization and approval by partners and host countries.

■ 2024 countries of origin
 ■ 2024 host countries



Internal displacement

- **25 million** people assisted through the [Global Protection Cluster](#).
- **20 million** individuals benefited from the camp coordination and camp management [CCCM Cluster](#).
- **17 million** people reached through the [Global Shelter Cluster](#).
- **11.7 million** internally displaced people are on a solutions pathways.

United Nations partnerships

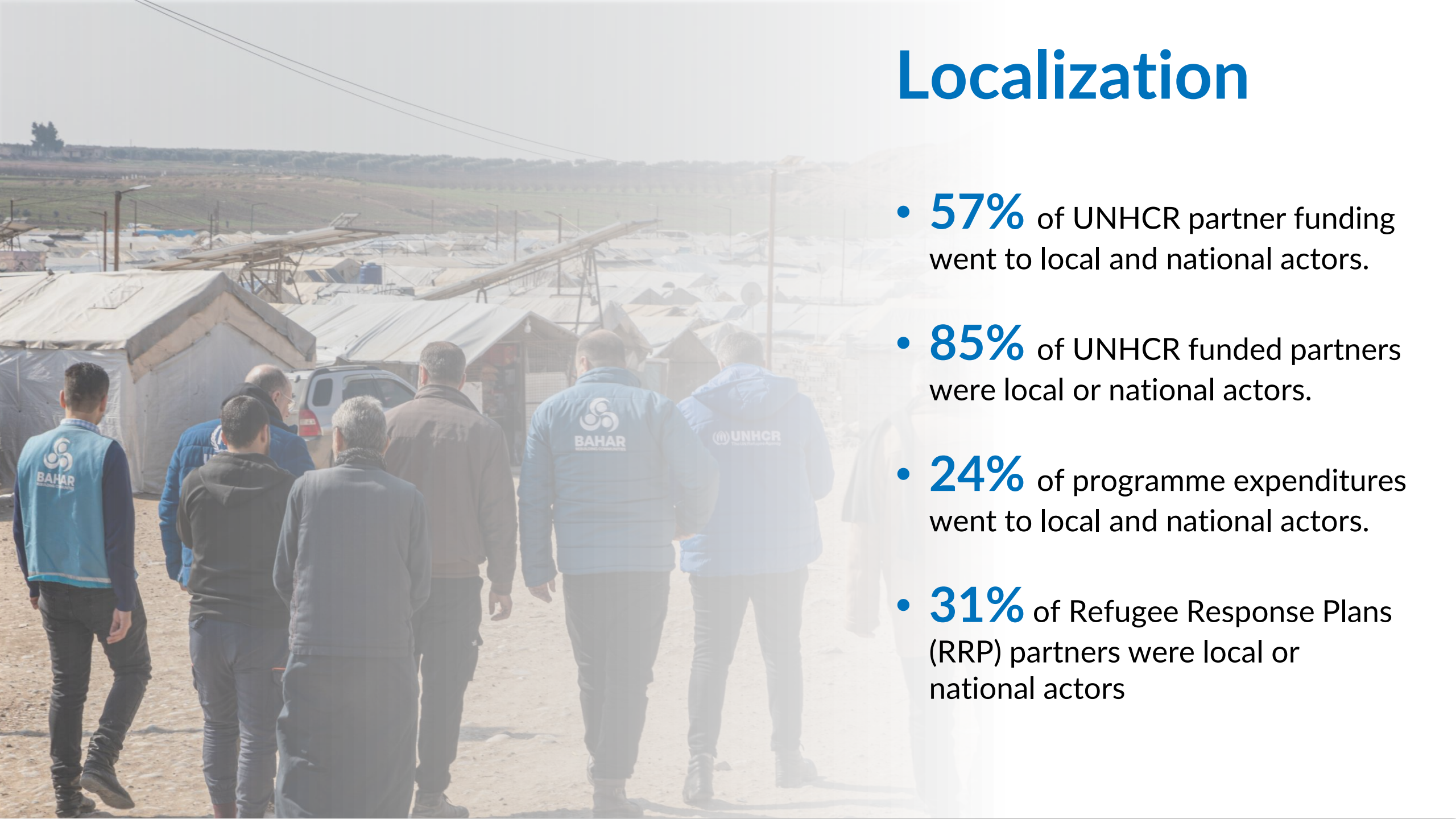




Engagement with non-governmental organizations and civil society

Localization

- **57%** of UNHCR partner funding went to local and national actors.
- **85%** of UNHCR funded partners were local or national actors.
- **24%** of programme expenditures went to local and national actors.
- **31%** of Refugee Response Plans (RRP) partners were local or national actors



The impact on our partners (ICVA Survey)





Engagement with sport organizations

International Financial Institutions



THE WORLD BANK
IBRD • IDA | WORLD BANK GROUP



AFRICAN DEVELOPMENT BANK GROUP



ASIAN DEVELOPMENT BANK



IFC

**International
Finance
Corporation**

World Bank Group

IsDB



البنك الإسلامي للتنمية
Islamic Development Bank



IDB Inter-American
Development Bank



Thank you