

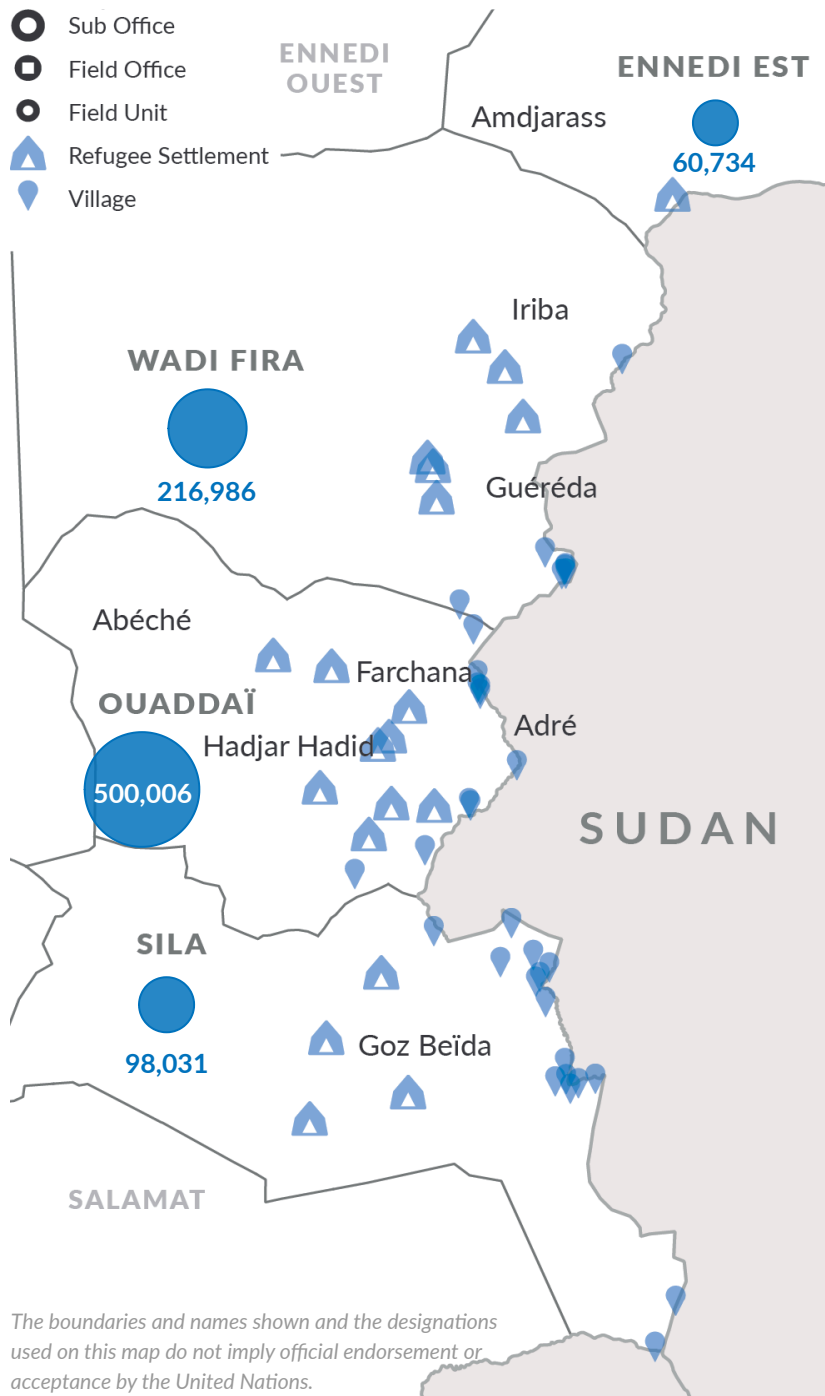


Since April 2023, the CNARR, UNHCR and IOM monitor and assist an influx of Sudanese refugees and Chadian returnees arriving in the provinces of Ouaddai, Sila, Wadi-Fira and Ennedi Est. Humanitarian agencies support the Chadian Government and local authorities to provide lifesaving assistance and protection services. The Government and UNHCR assisted 62% of refugees to relocate from spontaneous arrival sites to extended and newly established settlements where refugees and host communities benefit from the services delivered by humanitarian teams.

ARRIVALS

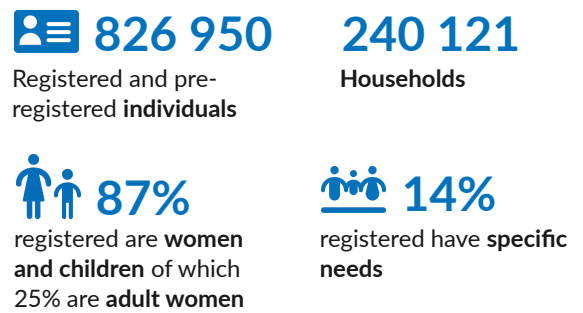


New arrivals per province

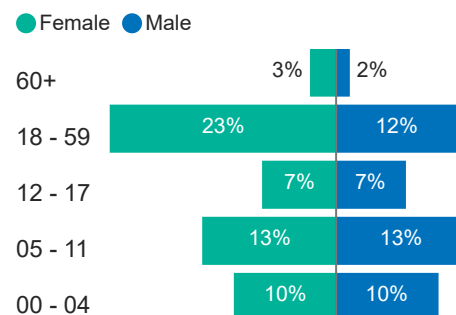


The boundaries and names shown and the designations used on this map do not imply official endorsement or acceptance by the United Nations.

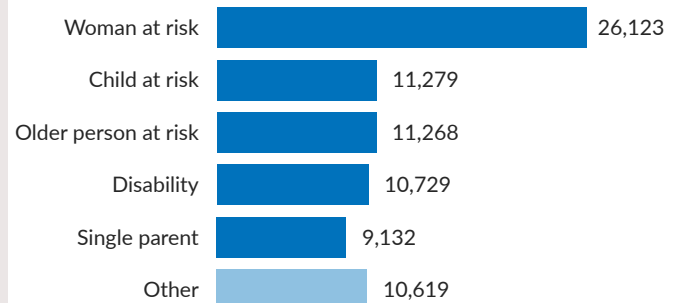
REGISTRATION



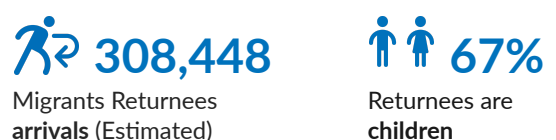
Age and gender breakdown of registered persons



Registered persons with specific needs  
Top 5

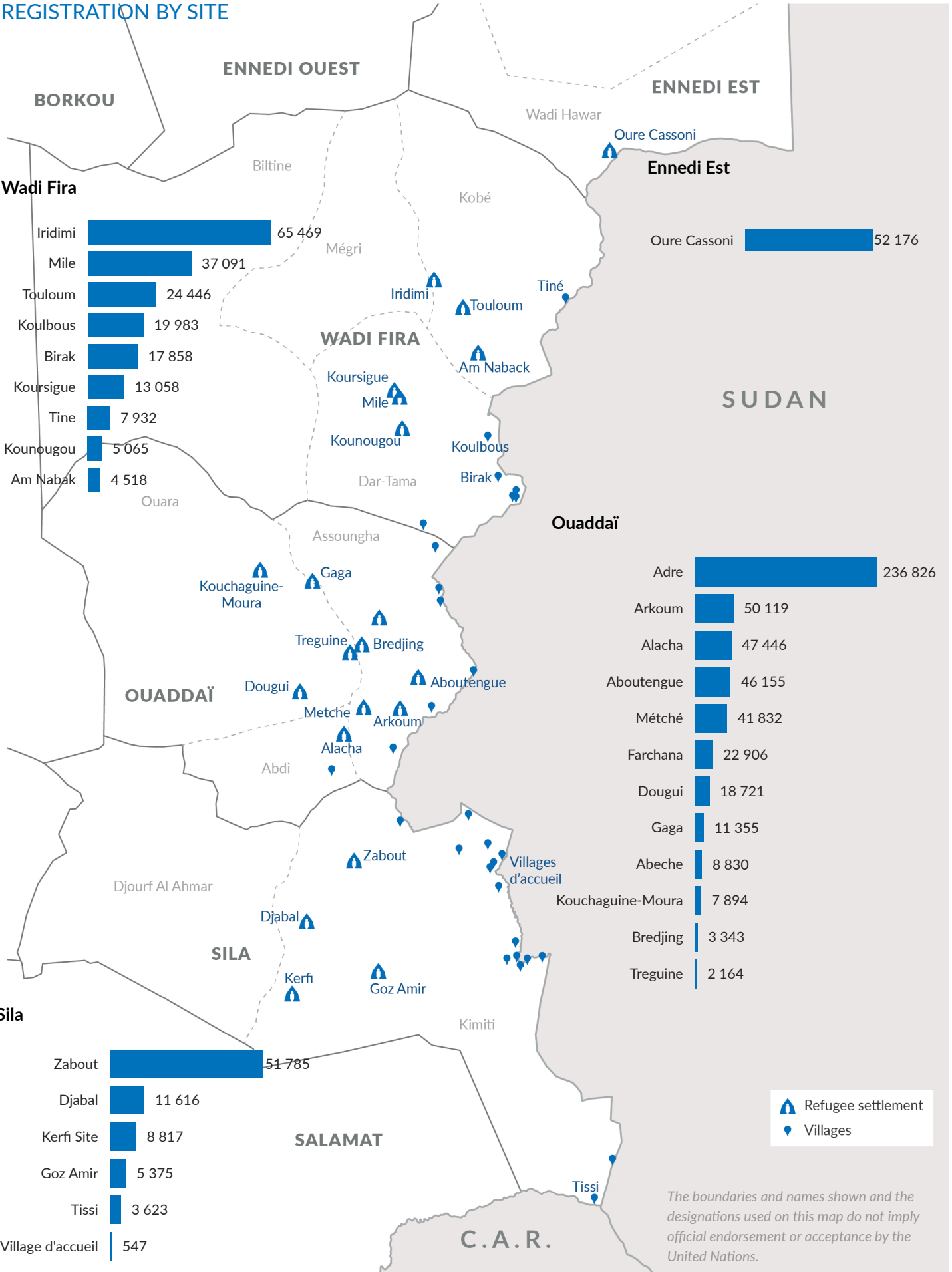


RETURNS



Source: UNHCR, IOM, Governments and Partners

REGISTRATION BY SITE



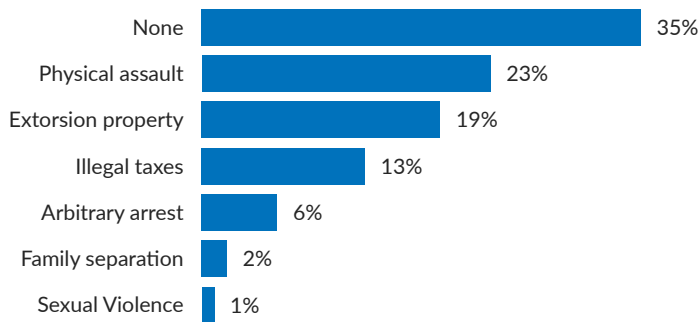
## Project 21- Protection monitoring

The Project 21 is a regional protection monitoring system, launched in 2020 to address gaps in data collection and analysis on protection in West and Central Africa. The inter agency project mobilizes partners to collect a set of data using harmonized tools and a common methodology to generate joint analysis of the situation, risks, and protection trends.

319 households interviewed from 1 to 7 august 2025, following the various influxes registered, mainly at the entry points of Tiné, Kulbus, Birak (Wadi Fira), Bahai and Kariari (Ennedi East) and Adré (Ouaddai).

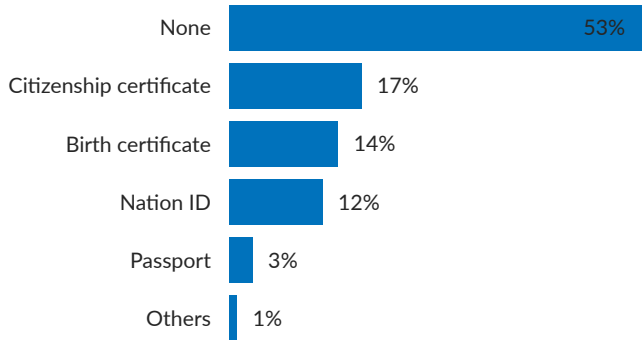
### PROTECTION RISK

What types of identified dangers or threats are you exposed to?



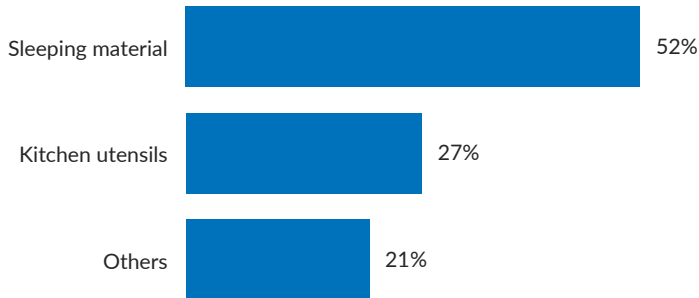
### DOCUMENTATION

What type of individual document do you possess?



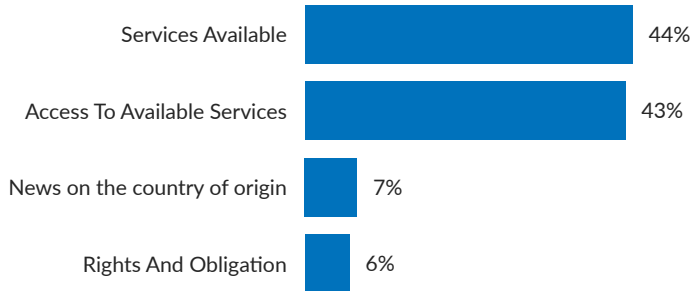
### BASIC NEEDS AND ESSENTIAL SERVICES

What category of items does your family need the most?



### COMMUNITY ENGAGEMENT

What type of information would you like to receive from humanitarian workers and authorities?



### GENDER BASED VIOLENCE

What are the support mechanisms for GBV victims?



### EDUCATION

Are there any school age children in your family?

