



Mozambique

Operational Update

October-December 2025

Angelina Mussa fled her home in Muidumbe after renewed violence forced thousands to seek safety. She now lives at the Megaruma displacement site, sharing a tent with more than 50 women and children. Despite repeated upheaval, displaced people, like Angelina, remain determined to rebuild their lives with dignity. © UNHCR/Isadora Zoni

Population Figures



609,243

Internally Displaced Persons (IDP)

- Conflict-related: 461,237
- Climate-related: 148,006



701,462

Returns to district of origin, many of them with specific needs



24,083

Refugees and Asylum Seekers

Source: IOM/DTM Mobility Tracking Assessment round 22 (May 2025), UNHCR registration as of December 2025

KEY RESULTS (January-December 2025)



466,653

persons were reached and empowered with **essential protection services**.



46,183

persons **obtained identity documents**, enabling access to services and enhancing freedom of movement.



133,754

persons were supported and empowered to **prevent and respond to gender-based violence**.

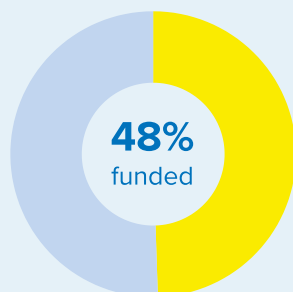


32,904

persons **received essential items** to help meet their basic needs, including blankets, mosquito net and hygiene supplies.

FUNDING

As of December 2025



- Funded
- Funding gap

UNHCR appealed for **USD 42.7 million** for its 2025 programme, of which **USD 20.6 million** was received to support forcibly displaced populations.

OPERATIONAL CONTEXT

Since 2017, around **1.3 million people** have been displaced internally due to the ongoing conflict in northern Mozambique where non-state armed groups (NSAGs) carry out repeated attacks against civilians and civilian infrastructure. The fourth quarter of 2025 saw a sharp deterioration in the security situation in northern Mozambique, with an expansion of violence into Nampula province. NSAG attacks in Memba district marked a significant shift in the conflict’s dynamics, with more than 100,000 people displaced in two weeks in November alone. Since July 2025, an estimated 300,000 people have been newly displaced amid escalating insecurity in Northern Mozambique, with civilians continuing to face violence, killings, abductions, looting and the destruction of homes and infrastructure. The rapid influx of displaced families has overwhelmed local capacities and heightened protection risks.

Mozambique remains one of the world’s most climate-vulnerable countries, with around 148,000 people displaced due to climate-related events. Over a million people were affected during the 2024-2025 cyclone season, where many of the hardest-hit areas were already hosting large numbers of IDPs uprooted by conflict. The climate crisis continues to strain local capacities and deepen protection risks for displacement-affected communities.

Mozambique also continues to host approximately 24,000 refugees and asylum seekers primarily from Central and Eastern African countries, many of whom

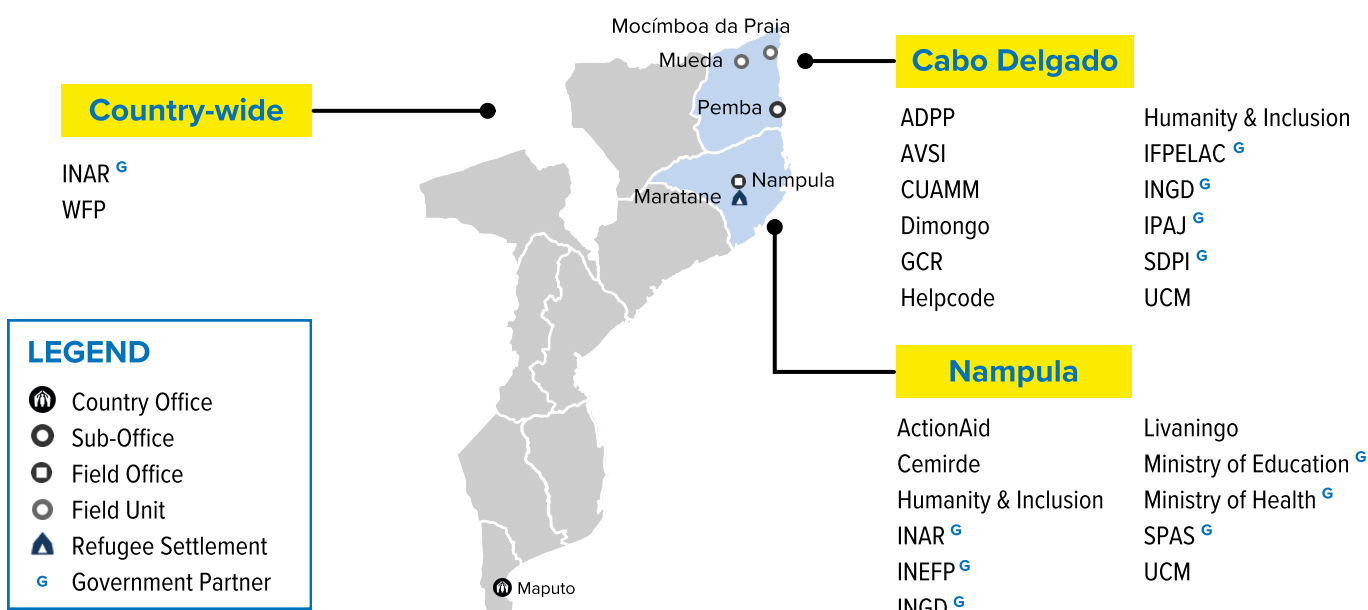
have lived in protracted displacement for over a decade.

UNHCR’s response in Mozambique is anchored in four interlinked priorities aimed at addressing immediate protection needs while advancing long-term solutions for displaced populations:

- 1 Protection and solutions data and analysis:** Deliver comprehensive, accurate and actionable protection and solutions data and analysis to inform evidence-based advocacy, policy and programming.
- 2 Operational protection and solutions response:** Prevent and respond to urgent and protracted protection needs, as well as support pathways to solutions.
- 3 Support to national systems:** Support the Government to enhance access to national services for forcibly displaced people as well as to assess, prevent and provide quality responses to protection needs.
- 4 Inclusion, development and solutions:** Play a catalytic role to advance durable solutions for forcibly displaced people by building partnerships, ensuring protection considerations are fully integrated in solutions analysis, programming, planning and advocacy efforts of others.

These priorities are implemented in close collaboration with a wide range of stakeholders, including the Government of Mozambique, UN agencies, NGOs, civil society, development partners, and host communities, to ensure a coordinated and sustainable response.

UNHCR AND PARTNER PRESENCE



Note: The boundaries and names shown and the designations used on this map do not imply official endorsement or acceptance by the United Nations.

EMERGENCY RESPONSE (As of December 2025)

ERATI

During the reporting period, UNHCR led the protection response in Northern Nampula where more than 100,000 people were forced to flee. Based on key protection risks identified, including forced recruitment, gender-based violence (GBV), family separation and psychosocial distress resulting from trauma and loss of basic services, UNHCR and partners provided urgent protection services, including:



Protection Desks

UNHCR and ActionAid established Protection Desks in displacement sites to identify vulnerable individuals and connect them to available protection services according to their needs. Together with partners Helpcode, ActionAid and HI, a network of outreach mobilizers and trained protection focal points were deployed to disseminate information and monitor protection risks.



Mental Health and Psychosocial Support (MHPSS)

Response teams provided MHPSS for recently displaced families to mitigate trauma and promote resilience. Through partner HI, a mobile clinic provided physical assessments, counselling and assistive mobility devices to persons with disabilities and older persons.



Gender-based violence (GBV)

Response teams activated GBV referral pathways and conducted wide-scale GBV and PSEA sensitization campaigns. Teams also identified unaccompanied and separated children and supported family reunification.

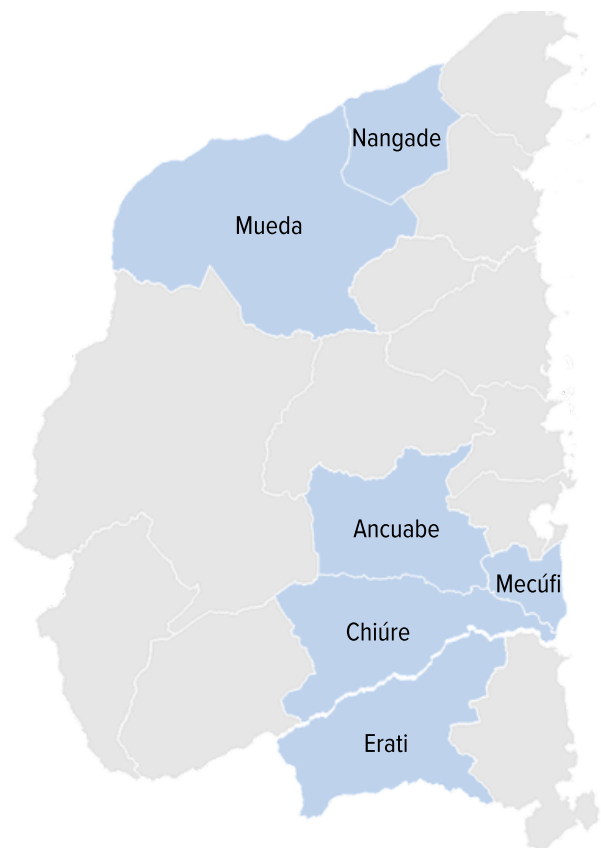


Core Relief Items (CRI)

As part of the Joint Response Plan, composed of UNHCR, IOM, WFP and UNICEF, UNHCR supported around 1,700 households through the provision of core relief items.

JOINT RESPONSE PLAN

Life-saving support through the Joint Response Plan continued in Cabo Delgado and Northern Nampula, including in Ancuabe, Chiúre, Erati, Mecúfi, Mueda and Nangade. This support included GBV and PSEA awareness sessions, establishment of Protection Desks for case identification and referrals, mental health and psychosocial support, addressing the urgent and ongoing humanitarian needs.



Joint Response Plan



Protection Desk identifying persons with specific needs at the transit centre in Erati
© UNHCR/ Deiliany Souza



Group awareness sessions on gender-based violence (GBV) and protection from sexual exploitation and abuse (PSEA) in Erati
© UNHCR/ Deiliany Souza

1. Protection and Solutions

Civil Documentation and Legal Aid

Civil documentation

Civil documentation is a critical protection tool for forcibly displaced persons, enabling access to essential services such as healthcare, social security, banking, formal employment, and school. It also enhances freedom of movement and reduces protection risks. However, documentation is often lost or left behind during displacement. Between October and December, UNHCR, in partnership with the Catholic University of Mozambique (UCM), supported the Government in issuing 8,194 civil documents—including birth certificates and ID cards—to internally displaced individuals across Cabo Delgado and Nampula, bringing the total number of documents issued this year to 46,183 (40,692 IDPs and 5,491 refugee and asylum seekers).

Legal aid

Legal aid is a vital component of a comprehensive protection response, ensuring that displaced people can access justice and assert their rights. UNHCR integrates legal support into its broader protection strategy by providing awareness-raising sessions, legal counselling, and representation on key issues such as housing, land, and property (HLP) rights, gender-based violence (GBV), child protection, and labour rights. In October, for example, UNHCR, through its partner CEMIRDE, supported refugees and asylum seekers who were victims of robbery, physical assault and property damage by referring cases to the police and relevant government authorities for investigation. In partnership with the Institute of Legal Sponsorship and Assistance (IPAJ), Catholic University of Mozambique (UCM) and CEMIRDE, UNHCR supported a total of 28,187 people in Cabo Delgado and Nampula with legal aid in 2025.

Community-Based Protection and Social Cohesion

Protection awareness

Protection awareness sessions are a cornerstone of UNHCR's community-based protection approach, empowering forcibly displaced people with knowledge of their rights and tools to access vital support. From October to December, UNHCR reached diverse groups in Cabo Delgado and Nampula through targeted sessions focused on rights awareness, available services and key protection messages. In October, in commemoration of the International Day of the Girl Child, UNHCR, in collaboration with ActionAid, Provincial Social Action Services (SPAS) and Government counterparts, supported interactive awareness sessions in Maratane Refugee Settlement and Nampula City. These sessions focused on girls' right to education, safety and freedom from violence, while advocating against child marriage and gender-based violence.

Persons with specific needs

Between October and December, UNHCR and its partners HI, AVSI, Helpcode, ActionAid and UCM identified more than 320 persons with specific needs and individuals at heightened risk across IDP sites and host communities in Ancuabe, Erati, Memba, Mueda and Nangade. Targeted support included mobility assessments, provision of assistive mobility devices, mental health and psychosocial support, rehabilitation services and referrals to specialised medical care for persons with functional limitations. Through these interventions, UNHCR and partners strengthened community safety, improved access to protection services and ensured timely support for the most vulnerable.

French Embassy Mission to Nampula

In December, the French Ambassador to Mozambique visited the Corrane IDP site in Nampula together with UNHCR Mozambique's Representative. The visit reaffirmed France's commitment to the humanitarian response in northern Mozambique and provided an opportunity to reflect on the ongoing needs and the progress achieved so far in Corrane.

*Photo: The mission team interacting with children at the Corrane IDP site in Nampula
©French Embassy in Mozambique/ João Garrido*



Community engagement

UNHCR engages communities through protection structures to strengthen local protection capacities and promote community-based protection. Community activists play a critical role in identifying immediate protection risks and facilitating access to essential protection services. In October and November, UNHCR and ActionAid worked closely with community activities in community outreach in Erati and Memba, including home visits, identification of people with specific needs and referrals of GBV survivors to case management and essential supports. UNHCR continues to strengthen the capacities of these community structures to enhance community-led protection, particularly in remote and hard-to-reach areas.

Community Feedback Mechanism

As part of the [Accountability to Affected People \(AAP\) approach](#), UNHCR enables communities to provide feedback and request information through Community Feedback Mechanisms (CFMs), with UNHCR in turn taking action on the feedback received and informing the community. In October, UNHCR engaged 367 individuals from displaced and host communities in Nampula in awareness sessions on complaint mechanisms, strengthening their understanding of available reporting channels. In 2025, 22,929 individuals accessed the mechanism through various channels to voice their needs, concerns and feedback, helping ensure that UNHCR and partner programming and services remain community-informed.

Social cohesion

UNHCR implements social cohesion initiatives aimed at promoting interaction and building trust between displaced persons and host communities. In October, UNHCR organised sports and cultural activities, including football tournaments, cross-cultural event and recreational activities for children, as part of its social cohesion initiative. These activities engaged more than 160 participants from refugee, internally displaced and host communities across Maratane Refugee Settlement and Corrane IDP site. By promoting unity, mutual understanding and inclusion among different community groups, these initiatives strengthened community ties and fostered peaceful coexistence among refugees, IDPs and host communities.

GBV and PSEA

GBV survivor care and empowerment

UNHCR supports survivors of gender-based violence (GBV) by providing holistic care tailored to individual needs and facilitating access to economic empowerment opportunities. In October, UNHCR and its partners reached 108 women through empowerment programmes focused on sewing, cooking and literacy skills in safe spaces at Corrane and Mutava Rex IDP sites. These efforts were further strengthened by the launch of the Megaruma Protection Hub in Chiùre, which provides essential survivor-centred services. The hub was handed over by UNHCR and its partner AVSI to the local community, which will continue supporting the resilience and recovery of GBV survivors in Megaruma. In 2025, UNHCR GBV response and prevention activities reached 133,754 individuals.

Mental health and psychosocial support

Addressing the emotional, psychological and social impacts of GBV is essential for the recovery of survivors. UNHCR continued specialised mental health and psychosocial support for GBV survivors and individuals at risk in Cabo Delgado and Nampula. In October, UNHCR and its partner CUAMM organised awareness activities in commemoration of World Mental Health Day, contributing to increased awareness and reduced stigmatization surrounding mental health needs among displaced communities. In 2025, UNHCR and its partners supported more than 2,600 individuals in coping with trauma, restoring a sense of safety and improving their overall well-being, contributing to long-term recovery and resilience.



UNHCR and partners provide mental health and psychosocial support in Ntamba, Mocimboa da Praia district, helping displaced families cope with trauma and strengthen long-term resilience. © UNHCR

GBV awareness-raising activities

UNHCR strengthens the prevention of and response to gender-based violence by raising awareness and promoting gender equality within communities. Between October and December, UNHCR intensified sensitization on GBV risks and protection from sexual exploitation and abuse (PSEA) in Chiúre, Memba, Mueda and Nangade following the arrival of newly displaced populations. These activities equipped more than 9,000 people with knowledge and skills to prevent and respond to GBV. In Nampula, community awareness sessions on GBV and PSEA reached 246 individuals in Corrane and Mutava Rex IDP sites through theatre and storytelling in Portuguese and local languages, promoting understanding of PSEA and reporting mechanisms. UNHCR also supported the government-led launch of the 16 Days of Activism campaign in Nampula by contributing materials for the march and opening event, as well as a market showcasing products made by women participating in UNHCR safe spaces programmes, promoting collective action to combat violence against girls and women.

Data and Analysis

Protection Monitoring

UNHCR's [Protection Monitoring](#) engages affected communities to assess protection needs and risks, providing a key evidence base that informs UNHCR's programming, supports the broader humanitarian response and strengthens advocacy efforts. Between October and December, 3,577 households in Cabo Delgado were interviewed, bringing the total number of households consulted in 2025 to 13,849. These consultations represent the views of more than 67,000 individuals, including IDPs, returnees to their districts of origin and members of host community.

Joint UNHCR–IFC value chain diagnostics

UNHCR supported the implementation of the joint UNHCR–IFC value chain diagnostics in Nampula and Cabo Delgado, aimed at addressing a critical data gap on private sector opportunities that can strengthen self-reliance and advance durable solutions. Building on collaboration with the World Bank, the Joint Data Centre and the National Institute for Statistics, UNHCR provided technical support on protection-sensitive data collection and analysis in displacement contexts. This support included facilitating community access and training research teams on protection-sensitive approaches, including PSEA and referral pathways. Drawing on these lessons, UNHCR also developed and released a [guide on protection considerations](#) when surveying forcibly displaced populations in Mozambique.

Photo Exhibition: “Refúgio: Caminhos Cruzados”

UNHCR, together with the Ministry of Interior and the National Institute for Refugee Support (INAR), commemorated its 75th anniversary and Mozambique's 50 years of independence with a public photo exhibition held at Maputo Central Railway Station. The exhibition, “Refúgio: Caminhos Cruzados,” was officially launched on 11 December in the presence of Government representatives, members of the diplomatic corps, UN leadership and humanitarian partners. During the opening ceremony, Graça Machel, the recipient of the 1995 Nansen Refugee Award, shared reflections on displacement and lessons from Mozambique's history. The exhibition highlighted the country's long history of forced displacement and return, while reflecting on Mozambique's current role in hosting refugees and addressing internal displacements, emphasizing themes of belonging, reconstruction and contribution.

Photo (top): Graça Machel views the photo exhibition reflecting Mozambique's history of displacement and return © UNHCR/João Garrido

Photo (bottom): Guests from the Government, diplomatic corps, UN agencies and humanitarian partners attend the opening ceremony of the exhibition © UNHCR/João Garrido



Protection Cluster

Emergency protection responses to new displacement

The Protection Cluster, led by UNHCR, coordinates responses for populations affected by conflict and climate-related shocks, including during emergencies. Between October and December, the Cluster mobilised partners and coordinated emergency response activities, such as psychosocial support, family reunification services, assistance to persons with disabilities and GBV and PSEA awareness and response. This coordination enabled early field access, improved timely collection and circulation of information and supported the identification of critical operational gaps during the displacement response.

Emergency response mapping

As part of its emergency coordination effort across affected districts, the Protection Cluster mobilised partners to systematically map their presence, capacities and protection risks across newly affected and hosting areas to identify trends, operational gaps and priority needs. Using an area-based approach, the exercise strengthened coordination, information-sharing and partner communication at district level, helping ensure that protection interventions are more targeted and effective.

2026 Humanitarian Needs and Response Plan

In October, the Protection Cluster and its Areas of Responsibility finalised the protection components of the 2026 Humanitarian Needs and Response Plan (HNRP). The plan outlines target populations and financial requirements across Protection, GBV, Child Protection, and Housing, Land and Property (HLP), totalling USD 42 million financial requirements and 926,000 people in need. More information, including a detailed breakdown of figures, response strategy, modalities and priority areas, is available in the full [2026 Humanitarian Needs and Response Plan \(HNRP\)](#).

Durable Solutions

Voluntary repatriation

Voluntary repatriation—the free and voluntary return to one’s country of origin in safety and dignity—is a key solution that enables forcibly displaced people to rebuild their lives. UNHCR, in coordination with the National Institute for Refugee Support (INAR) and Provincial Social Action Services (SPAS), continued mobilising, sharing information and registering individuals for voluntary repatriation. In October, for example, Burundian refugees and asylum seekers residing in Maputo and Nampula received information on voluntary repatriation and reintegration in Burundi through a livestream session. In 2025, a total of 7,715 individuals received information on voluntary repatriation and 97 refugees returned to their countries of origin, including 82 to Burundi, 10 to Rwanda and 5 to Somalia.

Amplifying voices of displaced persons on durable solutions

In December, UNHCR supported the participation of refugee representative from Mozambique in the Global Refugee Forum Progress Review in Geneva. Ismal Abraham, a refugee from Nampula, represented his community at the forum, delivering strong messages on the need for durable solutions for refugees and asylum seekers. He emphasised the importance of moving beyond political commitments towards concrete action grounded in justice and legality. He also highlighted the role of refugee-led organizations in advancing sustainable solutions and deliver lasting impact. UNHCR continues to promote the participation of displaced people in decision-making processes related to durable solutions.



UNHCR, in coordination with INAR and SENAMI, facilitated the voluntary repatriation of 12 Burundian families from Mozambique in October, supporting their safe departure. © UNHCR/ Rumbani Msiska

2. Core Relief Item and Case-Based Assistance

Core relief items (CRIs)

Core relief items (CRIs) are essential, life-sustaining supplies, crucial for the safety and well-being of displaced populations who often leave their belongings behind when forced to flee, particularly in new displacements. In November, UNHCR and partners supported 3,236 individuals in Namatil and Nachitenie IDP sites through the distribution of non-food items to respond to new arrivals displaced from Ancuabe and Mocímboa de Praia districts. In the following month, UNHCR and its partner CUAMM distributed 2,500 dignity kits to women and girls in hard-to-reach and recently displaced communities in Cabo Delgado. Through the Joint Response Programme, composed of UNHCR, IOM, WFP and UNICEF, around 1,700 households in Miliva, Erati district also received core relief items. In 2025, UNHCR assisted a cumulative total of 32,904 individuals (24,762 IDPs and 8,142 refugees and asylum seekers) with core relief items, addressing urgent needs resulting from displacement and recurrent climate-related events.

Cash-based assistance (CBI)

UNHCR provides cash-based assistance wherever markets and services are accessible. In December, UNHCR and the National Institute of Disaster Risk Management and Reduction (INGD), through a CERF-funded drought protection project, assisted 3,550 drought-affected households in Sofala and Manica provinces (approximately 17,750 individuals) with cash assistance to help meet urgent needs. Additionally, 995 individuals in Cabo Delgado received cash assistance to support their livelihoods. Delivered through targeted interventions, this support enables forcibly displaced persons to fulfil their needs in a dignified manner while contributing to local economies. In 2025, UNHCR and its partners assisted a total of 21,489 individuals with cash-based assistances.

3. Livelihoods, community empowerment and self-reliance

Technical and Vocational Education (TVET)

UNHCR supports displaced persons in bridging the gap between education and employment, enabling them to support their families and contribute to host communities. Between October and December, 213 individuals across Cabo Delgado and Nampula, continued receiving technical and vocational education and training programmes at the Institute of Professional Training and Labour Studies Alberto Cassimo (IFPELAC). Additionally, UNHCR facilitated support for 209 graduates through internship placements, professional kits and business start-up kits to improve their pathways to the labour market. Funded by the German Federal Ministry for Economic Cooperation and Development (BMZ) and implemented in partnership with the German Development Agency (GIZ), this initiative aligns with industry and labour market needs, equipping participants with valuable, marketable skills.

Entrepreneurship Programme

Between October and December, UNHCR reached 980 IDPs and host community members through entrepreneurship training, promoting economic independence and entrepreneurial skills. In December, 780 participants from UNHCR-supported entrepreneurship pathways in Metuge and Mecúfi graduated from the programme. Many already started small businesses using the financial support provided, contributing to improved livelihoods and the ability to meet their daily needs. In Mueda, UNHCR, in collaboration with ADPP, continued supporting 200 programme participants with entrepreneurship activities to help them launch their own income-generating activities. The initiative supports youth entrepreneurship and contributes to local economic recovery in displacement-affected areas.



Graduates from UNHCR-supported entrepreneurship training in Pemba proudly display their certificates, part of an initiative strengthening livelihoods and promoting economic self-reliance in displacement-affected communities. © UNHCR/ Isadora Zoni

Mobile Employment Desk

UNHCR, in collaboration with the National Institute for Employment Promotion (INEP), facilitated the employment consultation services through a Mobile Employment Desk held in November in Namialo, Nampula. A team of INEP technicians registered job seekers for internships and employment opportunities, provided guidance on vocational training and employment pathways, and identified candidates for entrepreneurship programmes. A total of 112 youths and working-age individuals (80 men and 32 women) from internally displaced and host communities accessed the desk to inquire about the employment services.

Economic inclusion dialogue

UNHCR and the German Development Agency (GIZ), through its Nexus Norte Programme, supported the National Employment Dialogue led by the Government, held on 6–7 October in Nampula. The dialogue aimed to improve the living conditions of forcibly displaced people and host communities in Mozambique. UNHCR presented its approach to economic inclusion and a new study conducted with International Finance Corporation (IFC), “Diagnostics on Value Chains in Agriculture to Boost Employment Opportunities in the Northern Region,” which explores employment opportunities in forced displacement contexts. The event concluded with the adoption of the Draft Nampula Commitment for Acceleration of Youths and Women, which sets out a shared framework for action to guide efforts to enhance employability in the northern Mozambique.

Climate-Resilient Farming

UNHCR continued to support farmers in vulnerable areas to build resilience against risks such as extreme weather conditions and market shocks. In Chiúre, an agricultural fair connected 141 producers participating in the programme with traders and financial institutions, expanding access to markets and credit opportunities. In Mueda, UNHCR and its partner ADPP supported 100 individuals, with a majority of women and persons with disabilities, through climate-smart farming activities. Farmers produced 1,686 kg of vegetables, generating approximately 82,000 MZN in revenue. In Nampula, UNHCR, through the refugee-led organization ARM, supported 40 women farmers with climate-smart agricultural practices, cultivating three hectares of land with irrigation support.

Support for financial inclusions

UNHCR promotes the financial inclusion of IDP returnees to strengthen self-reliance and support livelihood recovery. In Mocímboa da Praia, UNHCR and SEPPA Foundation launched Village Savings and Loan Associations (VSLAs) benefiting 320 new participants in returnee communities. Sixteen VSLA groups were established, with each group receiving a complete savings kit to facilitate collective savings and access to small loans, mobilizing capitals to support small business activities.

4. Health and WASH

Health services

UNHCR continued supporting the inclusion of displaced persons in national public health programmes. As of December 2025, primary health care services for refugees, asylum seekers and host community members remain operational at Maratane Health Centre. In 2025, a total of 67,996 individual consultations were made in UNHCR-supported health care services.

Emergency WASH intervention

Responding to the emergency in Erati, where severe shortages of sanitation access were observed following the influx of more than 100,000 internally displaced persons fleeing violence in neighbouring Memba district, UNHCR provided materials for the construction of latrines in December. This intervention was implemented as part of Camp Coordination and Camp Management (CCCM) efforts coordinated by IOM, in response to the rapidly deteriorating sanitation conditions and the increased risk of water-borne diseases.

5. Education

Enhancing a digital learning space

In collaboration with Vodafone, UNHCR has expanded computer-assisted learning opportunities for students from forcibly displaced families across Nampula. In October, UNHCR supported the delivery of 150 school desks to INS Centres in Mogovolas, Ribaue and Nampula City, strengthening educational infrastructure for digital learning. In November, a new INS Centre was inaugurated at 12 de Outubro Secondary School in Nampula City, in the presence of District Administrator of Nampula, representative from education partners and Vodacom Foundation, as well as teachers and students. INS Centres represent significant strides in expanding digital learning opportunities for both displaced and host community learners.

LEADERSHIP AND COORDINATION

UNHCR exercises leadership and coordination responsibilities in areas related to displaced population, in line with its mandated accountabilities. In 2025, UNHCR continues to bring together diverse humanitarian and government actors to ensure a coordinated protection response for forcibly displaced people.

Cabo Delgado

- Protection Cluster
- Housing, Land and Property Area of Responsibility
- Community Engagement and Accountability to Affected Populations Working Group
- Disability Working Group
- Solutions Working Group

Nampula

- Protection Working Group

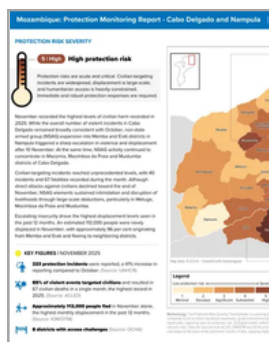
LEGEND

- (Co-)Coordinate
- (Co-)Chair

PUBLICATIONS AND UPDATES



Country
Briefing note: Nearly 100,000 displaced in recent weeks as violence spreads across northern Mozambique



Country
Protection Monitoring Report - Cabo Delgado and Nampula, Mozambique (November 2025)



Social media
Video: In northern Mozambique, fear and uncertainty have returned



Regional
Regional Pledge Stocktaking Report 2024 - 2025

UNHCR is grateful for the generous support of donors who have contributed to UNHCR Mozambique in 2025



and the support of the following private sector partners



For more information,

Contact: UNHCR Mozambique External Engagement Unit: mozmaextrels@unhcr.org

Visit: [UNHCR](#) | [Protection Cluster - Mozambique](#) | [X\(Twitter\)](#) | [Facebook](#)