

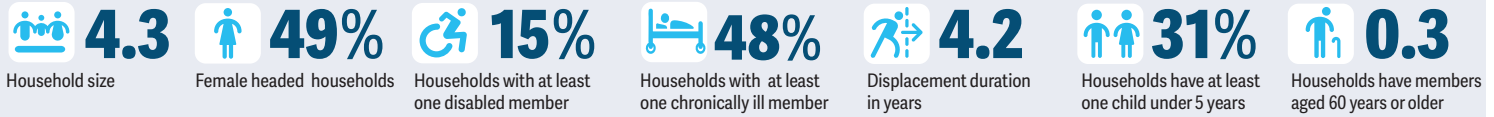
EGYPT VULNERABILITY ASSESSMENT FOR REFUGEES (EVAR) 2025

SUMMARY

In December 2024, UNHCR (United Nations High Commissioner for Refugees) and WFP (World Food Programme), in collaboration with CAPMAS* (Central Agency for Public Mobilization and Statistics) and the UNHCR-WFP Joint Hub, completed the 2025 Egypt Vulnerability Assessment for Refugees (EVAR).

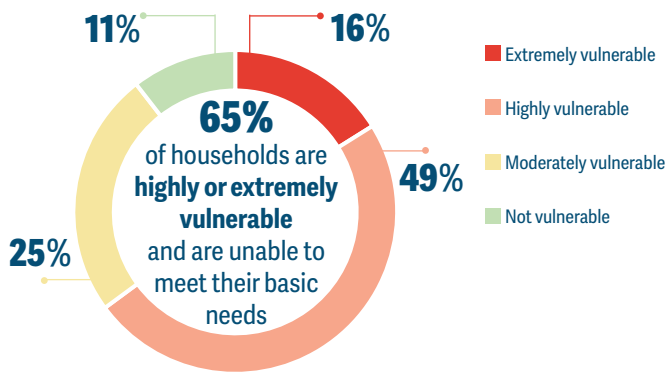
EVAR provides updated insights into the multi-dimensional vulnerabilities and food insecurity, needs, and capacities of refugees in Egypt. Total sample size included 3,349 households, collected between September and December 2024 representing all the nationalities in Egypt in Greater Cairo, Alexandria, Aswan, and other governorates such as Damietta, Al-Sharqia, and Al-Bahira.

Profile of refugee households, demographics (average):

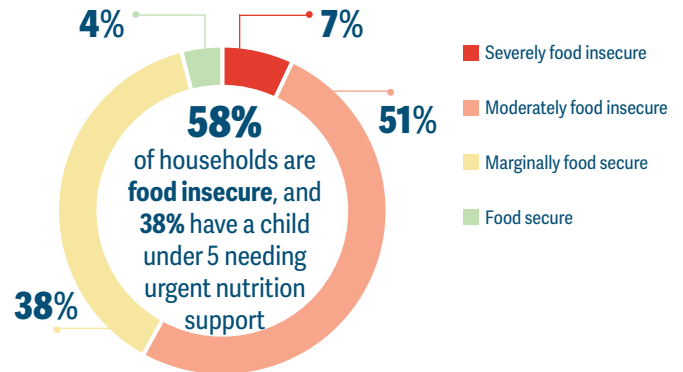


Vulnerability

Essential Needs



Food Security



“

Most of us have not worked in the past six months and rely only on cash assistance, as mentioned by one participant.

Suffering from many illnesses, the first thing the doctor said is to get proper nutrition... I can't afford food, let alone proper diet, another participant said.

”

Key Findings

Economic Vulnerability and Gender Dynamics

- Over **50%** of households economic capacity was determined to be under the Survival Minimum Expenditure Basket (EGP **3,868**/month).
- Female-headed households are most vulnerable with lack of formal education, more children, and members with disabilities or chronic illness.

Coping Strategies

- 60%** reduce health to cope with insufficient resources as Crisis Strategy, followed by borrowing **51%**, spending savings **41%**, moving to cheaper housing **38%** as Stress strategies.
- 92%** adopt food consumption-based coping strategies, skipping meals or prioritizing children.

Access to Basic Services

- 48%** of school-aged children are out of school – mainly due to high education costs **71%**.
- 29%** cannot access needed health services. Of Them, **94%** say cost is the barrier.
- 76%** rent their homes, yet **61%** face a risk of eviction.

Self-reliance

- 37%** of HHs resort to casual work; **31%** on informal jobs.
- 43%** of debts cover rent followed by purchasing food **31%** cover food, and **16%** cover health.
- Employment remains highly precarious and temporary.

*This large-scale field exercise was made possible through CAPMAS' central role in questionnaire design, fieldwork, and data quality assurance under challenging conditions. We sincerely appreciate their collaboration and look forward to building on this strong partnership in future initiatives.

For more information, please contact:

UNHCR in Egypt: batarseh@unhcr.org; herwig@unhcr.org
WFP in Egypt: amina.alkorey@wfp.org; naglaa.atef@wfp.org



UNHCR
The UN Refugee Agency



World Food Programme