



**SITUATION SUMMARY**

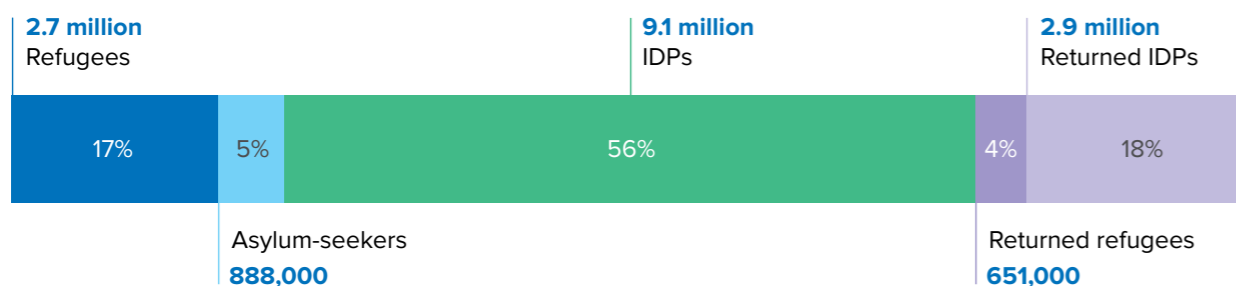
*Internally displaced people in Kosti, Sudan's White Nile State, receive assistance after fleeing violence in West Kordofan. UNHCR is supporting displaced families with core relief items, communal shelters and protection services. © UNHCR/Antonia Vadala*

# Sudan situation

Country operations involved in the response: Central African Republic, Chad, Egypt, Ethiopia, Libya, South Sudan, Sudan, Uganda.

## 2025 year-end population figures

**16.3 million** Sudanese refugees in neighbouring countries and IDPs



## Context

The conflict in Sudan continued throughout 2025, deepening an already severe humanitarian and socioeconomic crisis. Efforts to negotiate an end to the fighting made little progress, and temporary ceasefires repeatedly collapsed. The increasing use of drones and aerial bombardments caused heavy civilian casualties, destroyed homes and essential infrastructure, and disrupted humanitarian convoys.

Famine was confirmed in camps hosting internally displaced people (IDPs) in North Darfur in early 2025, and in Kadugli, South Kordofan State, by November.

In March 2025, Khartoum came under government control, triggering a large-scale spontaneous return. About 3.5 million forcibly displaced people returned – including more than 650,000 Sudanese refugees and asylum-seekers – with an estimated 1.5 million people returned to the capital.

Women and girls continued to bear a disproportionate burden of the conflict, facing alarming levels of sexual violence, exploitation and other abuse during displacement and in areas affected by active hostilities. Family separation remained widespread, with thousands of unaccompanied and separated refugee children arriving in neighbouring countries, many of them injured, exposed to violence and experiencing severe psychosocial distress.

Neighbouring governments continued to keep borders open to people fleeing Sudan, even as rising needs and severe funding shortfalls stretched their response capacity. UNHCR responded by stepping up engagement with development actors and investing more in economic opportunities and essential services for forcibly displaced people and host communities in Sudan and countries of asylum.

By the end of 2025, an estimated 12.8 million people remained forcibly displaced within and beyond Sudan, making it the world's largest displacement crisis. This included 9.1 million IDPs and 3.6 million people who had fled to neighbouring countries, including the Central African Republic, Chad, Egypt, Ethiopia, Libya, South Sudan and Uganda. This figure includes over 837,000 Sudanese refugees that were already displaced prior to the conflict. Sudan also hosted 860,000 refugees and asylum-seekers, including 84,000 who arrived during the year.

## UNHCR in action

UNHCR led protection and displacement responses across borders, coordinating humanitarian and development actors throughout the region. Inside Sudan, UNHCR provided financial aid to more than 77,000 people, enabling them to meet basic needs. Over 120,000 families received emergency relief items and shelter kits, while around 960,000 people accessed services at clinics serving displaced populations and host communities.

More than 65,000 refugee children returned to school, learning alongside Sudanese classmates in UNHCR-supported classrooms. Nutrition programmes reached over 11,400 children with treatment for acute malnutrition,

while nearly 18,800 children and mothers received supplementary nutrition support. In addition, UNHCR also helped 34,000 people access legal assistance for civil documentation, housing and land disputes, and gender-based violence cases, and an estimated 82,000 identity documents were issued jointly by UNHCR and authorities, improving access to services and freedom of movement.

In Chad, UNHCR and partners helped relocate more than 192,000 Sudanese refugees from border areas to safer locations, including established settlements where they received protection, shelter, health care and other support. Some 11,000 children with specific need – including unaccompanied and separated children and other children at risk – were registered upon arrival and referred for specialized psychosocial, medical and legal support. Over 1.1 million medical consultations were carried out during the year, and more than 72,500 children were screened and treated for malnutrition. Across refugee settlements, expanded water and sanitation systems helped 86% of refugees access safe drinking water. UNHCR and partners also supported education by distributing more than 160,000 school kits to refugee children.

### Major achievements across 7 countries hosting Sudanese refugees

- 1 million+** people received in-kind assistance
- 780,000+** people received financial aid
- 260,000+** people received emergency shelter and housing support

### In Sudan

- 357,000+** IDPs received in-kind assistance
- 55,700+** IDPs and returnees received financial aid
- 63,500+** IDPs received emergency shelter and housing support

In Egypt, nearly 64,000 Sudanese refugees – including 1,733 survivors of gender-based violence – received financial aid to help meet basic needs.

Over 268,000 refugees and asylum-seekers received information on UNHCR assistance and protection services, including legal counselling, through on-site awareness sessions. Education cash grants supported more than 68,000 Sudanese refugee children, helping cover enrolment, transport, uniforms and tuition fees. Livelihoods support reached 1,342 individuals, primarily women, through self-employment initiatives, vocational training and provision of toolkits for income-generating activities.

In South Sudan, UNHCR, in partnership with IOM, relocated approximately 209,000 Sudanese refugees from border areas to established settlements, helping them access protection and humanitarian assistance. Some 81,000 people received essential relief items, including kitchen sets, dignity kits, clothing, jerry cans, plastic sheeting and solar lamps. Nearly 24,000 refugees and returnees received cash assistance to meet urgent needs. In addition, approximately 367,000 refugees, asylum-seekers and returnees gained access to energy for lighting, enhancing safety, mobility after dark, access to services and well-being.

In Ethiopia, UNHCR and the Refugees and Returnees Service constructed more than 300 shelters, alongside access roads and water systems, benefiting both Sudanese refugees and host communities. Health services for refugees continued through partnerships with government entities and non-governmental organizations.

In Uganda, infrastructure at reception centers and refugee settlements was expanded to accommodate peak arrivals and support registration. Refugee youth received training in agriculture, auto mechanics, carpentry, and information and communications technology, along with start-up kits to support self-employment. UNHCR and partners also supported enterprise development, helping graduates transition towards sustainable livelihoods. In total, nearly 22,000 refugees received livelihood support, including assets, training and business assistance. By the end of 2025, 743 Sudanese refugee children were enrolled in pre-primary education, 2,861 in primary education, and 207 in secondary education. An additional 19 Sudanese students were supported through the DAFI university scholarship programme.

### Coordination and partnerships

UNHCR continued to coordinate the [Sudan Regional Refugee Response Plan](#), launched in February 2025 with 111 partners, which mobilized \$450 million. Coordination within the Humanitarian Country Team and the cluster system helped align refugee and internal displacement responses across the region.

To strengthen engagement with development actors, UNHCR and the UN Development Coordination Office co-chaired the [Development Partners Group \(DPG\) for the Sudan Regional Crisis](#) – the only DPG globally co-led by UNHCR in

response to a forced displacement crisis. In 2025, the group convened two regional meetings with development partners and held two dedicated discussions focused on eastern Chad and on return trends to and within Sudan. [The Development Action Platform for the Sudan Regional Crisis](#), launched in April 2025, improved access to data, evidence and policy analysis for countries affected by the conflict. This platform received strong engagement from development actors, with substantive contributions from the World Bank.

UNHCR and UN Women launched a regional support platform for women-led organizations (WLO) responding to the Sudan crisis. The platform promotes [localization](#), amplifies the voices of women leaders and links their work with the [Women's Advisory Group](#) in Sudan. UNHCR also highlighted the Sudan regional crisis during a dedicated event during the Global Refugee Forum Progress Review in December 2025, showcasing the DPG and the WLO regional platforms as examples of how humanitarian, development and peace actors can work together effectively.

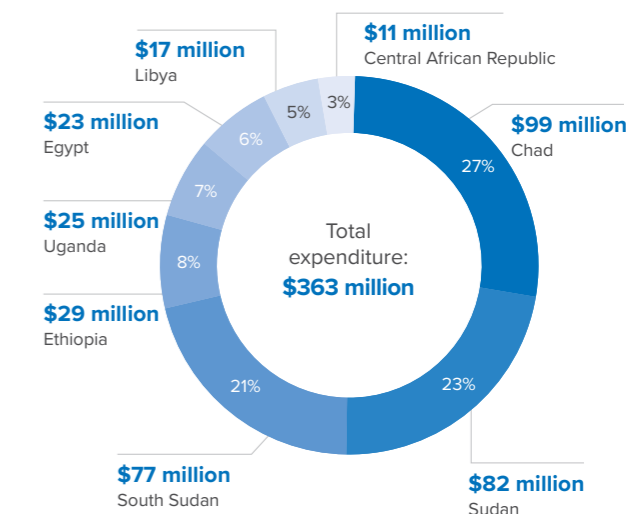
Collaboration with national authorities remained central to UNHCR's protection leadership, access to territory and policy coordination. Partnerships with local governments and national ministries facilitated additional development assistance and advanced refugee inclusion in national health and education systems. UNHCR also expanded its work with refugee-led and women-led organizations, helping communities identify protection concerns, support people at risk and strengthen local protection networks.

### Use of flexible funding

Flexible funding enabled UNHCR to continue delivering urgently needed relief items, health kits, shelter materials and protection assistance across the region. It also helped deploy field teams to border crossings, where they supported the reception, registration and relocation of new arrivals to established settlements. In a context of constrained resources, UNHCR focused on life-saving assistance and scaled back livelihoods, self-reliance and some community-based services to sustain the wider response.

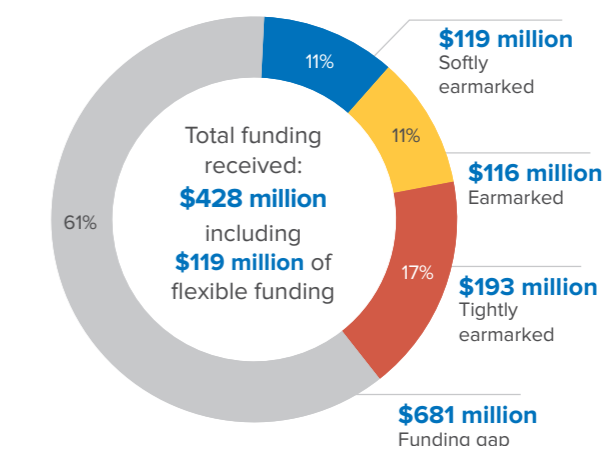
## Financial overview

### Expenditure by operation

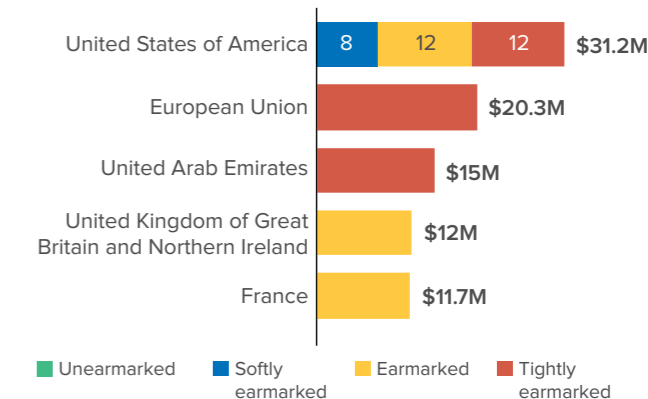


### Funding received (USD)

In 2025, UNHCR required a total of **\$1.109 billion** to address the Sudan situation but received only **39%** of that amount.



### Top 5 donors



Voluntary contributions from all other donors, carry-over and other adjustments were \$337.8 million.

## BASF supports life-saving humanitarian aid in Sudan



© UNHCR/Antonia Vadala

Generous contributions of over €370,000 (\$378,223) from BASF and its employees in Germany during their Christmas fundraising campaign with BASF Stiftung (foundation) meant critical humanitarian assistance was delivered to people affected by the conflict in Sudan. The funding enabled UNHCR to provide life-saving protection and support, including registration of new arrivals, targeted assistance to vulnerable individuals and access to national health and education systems in neighbouring countries. The

contributions also helped deliver shelter, relief items, and protection services to safeguard displaced families against exploitation and abuse. This collective effort highlights how corporate engagement and employee solidarity can mobilize meaningful support for urgent humanitarian crises.