

# Côte d'Ivoire Situation

## update CIV+5

United Nations  
High Commissioner  
for Refugees

Regional Office in Dakar, Senegal | 24th February 2011 | For external use

UNMIL / S. WINTERS / FEB. 2011

## In Brief...

- **39,784 refugees registered in Nimba County, Liberia – daily arrivals remain at 100 persons**
- **350 refugees (102 families) relocated to Bahn Camp to date – First transfer to relocation villages foreseen Saturday 26<sup>th</sup> February**
- **Up to 40,000 internally displaced persons (IDPs) identified in Côte d'Ivoire**
- **Security situation in Côte d'Ivoire is deteriorating**
- **Ongoing preparedness activities in Ghana to assist potential influx**

## Main Highlights on Liberia

Transfer by truck of refugees from the Loguatu axis to Bahn Camp that started on 18<sup>th</sup> February is ongoing, with a total of 350 individuals (101 families). Prior to the transfer, UNHCR's partners carry out pre-medical screening to ensure that the refugees are fit to travel and pay special attention to ensure that families are not separated during the process. During the transfer, both drinking water and additional jerry cans filled with water are available. Upon arrival refugees undergo medical screening and are provided with a hot meal, food rations sufficient for 15 days and a standard pack of NFIs for each family. UNHCR will continue to transport refugees at a rate of up to 100 persons a day and the process will be accelerated next week.

Transfers to relocation villages as well as transfers from other axes should commence Saturday 26<sup>th</sup> February. The general consensus from the verification process is that while many refugees would like to move to the camp, some have opted to remain along the border so they can be close their homes and property, and so they can return if the situation improves. However, UNHCR and other humanitarian agencies continue to discourage refugees from remaining along the border due to security concerns and severe logistical constraints in ensuring assistance. The delivery of assistance to these areas will become almost impossible during the rainy season due to the poor infrastructure. So far, 2,750 individuals have expressed their willingness to move to the camp while 140 persons wish to move to the relocation villages.

The identification and registration of refugees done respectively by the Liberian Refugee Repatriation and Resettlement Commission (LRRRC) and the

Norwegian Refugee Council (NRC) continued along the three main axes of Nimba County. In addition, the mass information campaign and the verification process is ongoing among the remaining refugee population.

## Main Highlights on Côte d'Ivoire

On 21<sup>st</sup> February AFP reported that Gbagbo's soldiers opened fire Monday with live ammunition to disperse young supporters of Ouattara, while Ouattara supporters called for a "revolution" similar to the one that recently occurred in Egypt.

With tensions escalating amid fears of civil war, the presidents of South Africa, Tanzania, Chad and Mauritania arrived on 21<sup>st</sup> February in Abidjan with a new set of proposals to break the impasse. They met with Gbagbo at the Presidential Palace for two hours, followed by a three-hour meeting with Ouattara on 22 February. According to an AFP reporter, at the meeting Ouattara accused Gbagbo's men of "violent suppression" of demonstrations by his followers on Monday, saying 12 were killed, some of them in fire from rocket-launchers.

The panel of Heads of State will have until February 28<sup>th</sup> to come up with "binding" resolutions. RFI radio mentioned that the AU panel could propose several types of compromise solutions on whether they should share the presidency between the two presidents and whether they should continue with the interim government until they have new elections.

# Humanitarian Challenges and Response

Page 2

## Population Movements – Overall Picture

|  | CIV           | Liberia | Guinea | B. Faso | Mali | Ghana | Togo | Benin | Niger | Nigeria | Total         |
|--|---------------|---------|--------|---------|------|-------|------|-------|-------|---------|---------------|
| Ref.   |               | 39,784  | 901    | 20      | 143  | 90    | 284  | 22    | 31    | 38      | <b>41,313</b> |
| <b>IDPs</b>  | <b>40,000</b> |         |        |         |      |       |      |       |       |         | <b>40,000</b> |
| <b>TOTAL POPULATION OF CONCERN – IDPs + REFUGEES</b> |               |         |        |         |      |       |      |       |       |         | <b>81,313</b> |

## LIBERIA

### ***Protection/ Community Services***

A new strategy for strengthening the protection monitoring network in the host locations is being jointly put in place with NRC. UNHCR will work with partners to deploy 60 protection monitors in the 15 relocation villages as well as in the 76 border villages to meet with the refugees and members of the host communities to discuss their specific needs. This exercise will provide a better understanding of refugees' reasons for leaving Côte d'Ivoire and will provide essential security information. Another 70 border monitors will cover border areas (including the 76 border villages) to better understand movements of population, to anticipate possible influxes and to identify potential security threats.

The identification of persons with special needs continued through daily field presence at registration level, during transfer and upon arrival in the camp. In addition, Save the Children is running a child friendly space two hours a day for refugee children in Bahn camp.

### ***Site Planning/Water Sanitation***

The cleaning of the **Bahn camp** site is nearly finished and NRC teams have completed 172 shelters. ACF succeeded in providing 60,000 liters of purified water from nearby rivers and trucking the water to tanks to be used while boreholes are drilled. In addition, a hand pump well was completed about two meters away from the kitchen of the camp. ACF is identifying an area for a cemetery for both Christians and Muslims.

The main roadmap for **Garwee camp** is now completed. The costs of manually clearing bushes from the internal road and of the work on the camp road

from Saclepea to Garwee have now been estimated. The possible involvement of Oxfam in water sanitation activities is being discussed.

A site visit was planned on 23<sup>rd</sup> February to assess water resources around the camp.

CRS and NRC have begun construction of shelters in **relocation villages**. Together they can produce 75 shelters a week in the communities chosen as relocation villages.

UNHCR and UNICEF decided on a common plan for the improvement of water sanitation facilities in the relocation villages.

UNICEF, through ACF, CIPORD and EQUIP, will provide 6 boreholes, 26 new wells fitted with hand pumps and construction of 1100 latrines in Larpea1 and 2, Karnplay, Beeplay, Seykimpa and Weaply villages. UNHCR, through DRC and Child Fund, will finance the digging of 47 new wells fitted with hand pumps, rehabilitation of 78 hand pumps and construction of 1600 latrines in Garbaplay, Mah display, Kealy, Zorgwee, Gbah, Zuatuo and Gbeivonwee villages. The two UN Agencies will share responsibility for Beatou and Tweh Town.

### ***Food Security/Nutrition***

As in previous transfers, refugees received a 15-day food ration as well as an NFI kit upon arrival in Bahn camp. The basket is composed of bulgur wheat, vegetable oil, pulses and corn soya blend.

### ***Health***

A medical screening of refugees is carried out by MSF/B upon arrival to the camp and medical cases with specific needs are referred to the closest medical facility (Bahn health centre).

In addition, measles vaccination for children is ongoing; with MSF using mobile clinics in areas where there are no health facilities (7 out of the 15 relocation communities have such facilities).

# Humanitarian Challenges and Response

## Liberia Operation Liberia - Côte d'Ivoire border As of 23 February 2011

**FIGSS**  
Field Information and  
Coordination Support Section

Sources:  
Statistics: UNHCR Saclepea  
Geographic info: UNHCR,  
Global Insight digital mapping  
© 1998 Europa Technologies Ltd.  
UNJLC - UNSD-I-T

The boundaries and names shown  
and the designations used on this  
map do not imply official endorsement  
or acceptance by the United Nations.



**Legend**

- Capital
- UNHCR Sub-Office
- UNHCR Field Office
- UNHCR Field Unit
- Refugee camp
- Refugee location
- Urban refugee location
- Main town or village
- Secondary town or village
- Airfield
- International boundary
- Main road
- Secondary road
- Unspecified road / track
- Railway
- Administrative boundary (Level 1)
- Administrative boundary (Level 2)
- Administrative boundary (Level 3)
- Main entry point
- Relocation movement to the camps

**Elevation (Above mean sea level)**

- 3,250 to 4,000 metres
- 2,500 to 3,250 metres
- 1,750 to 2,500 metres
- 750 to 1,750 metres
- 500 to 750 metres
- 250 to 500 metres
- 0 to 250 metres
- Below mean sea level

# Humanitarian Challenges and Response

Page 4

## Environment

Discussions were held with the Environment Foundation for Africa (UNHCR implementing partner) at Bahn camp in order to ensure that environmental considerations are taken into account in each sector (for example, marking trees in Garwee camp to indicate those that should not be cut down). Distribution of eco-stoves made locally by refugees from the old caseload under the coordination and trained by EFA has started.

## Logistics

Ten critical bridges were earmarked for quick rehabilitation; two are now reported completed while work on the remainder is ongoing. A UNHCR airlift is expected to arrive in Monrovia on 28 Feb. with 10 trucks, plastic sheets and tents.

# COTE D'IVOIRE

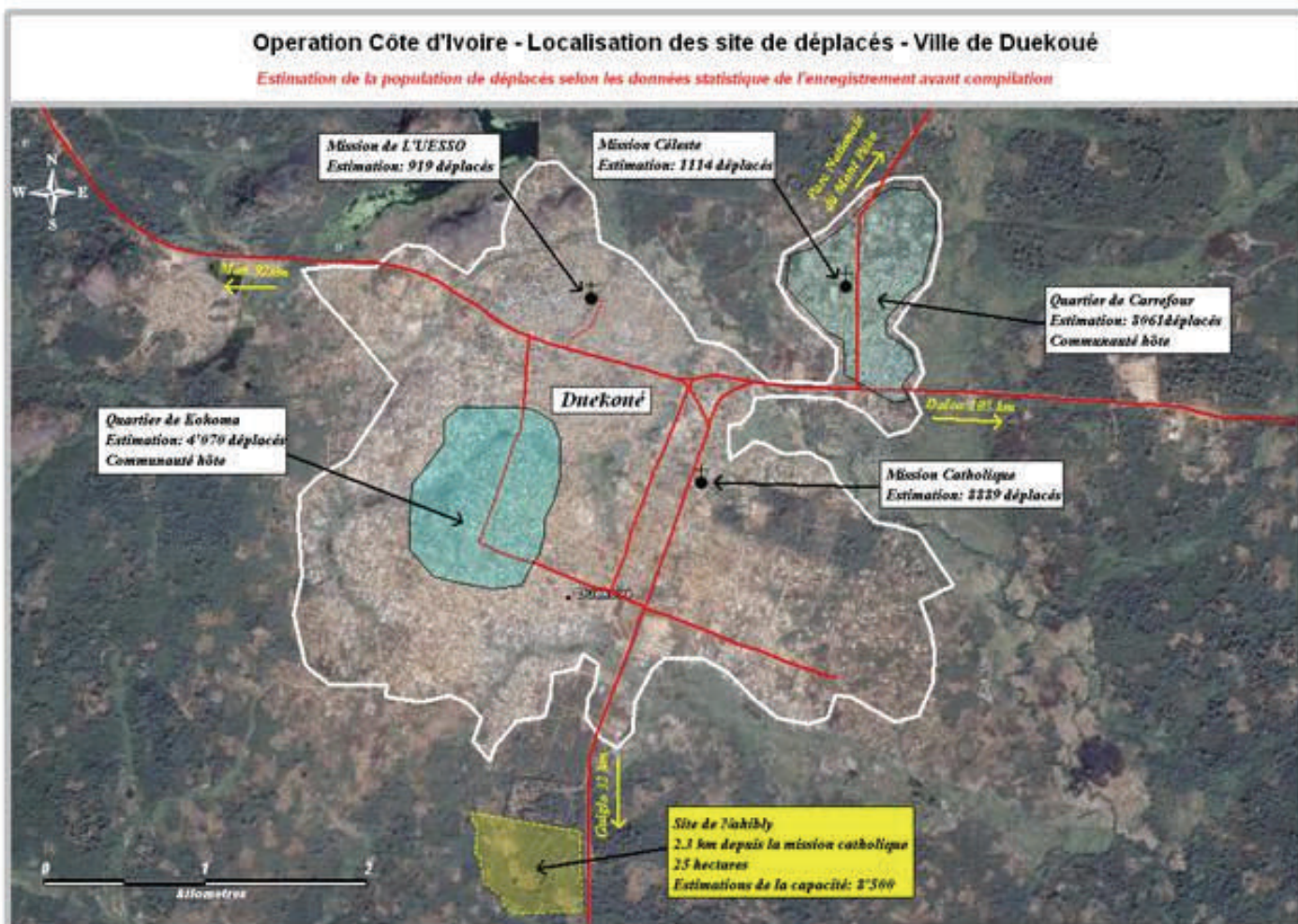
RFI stated on 23<sup>rd</sup> and 24<sup>th</sup> February that following explosions and gunfire in Abobo district, the main area of tension, several deaths from the civilian

population and the security forces have occurred, prompting more people to flee. On 22<sup>nd</sup> February AFP reported six deaths during violent riots in Abobo district, Koumassi and Treichville between Ouattara supporters and Security Forces (FDS) loyal to Gbagbo.

The majority of commercial banks have closed their doors and business activity is now almost at a standstill. A severe fuel shortage is being reported.

The fight for political supremacy reached a critical stage and this political crisis may end up triggering major military and ethnic clashes, particularly in the western parts of the country where displacements continue to take place (Danane, Man, Duékoué, Guiglo...).

An inter-agency mission held a rapid assessment in 10 targeted areas: Lakota, Issia, Sinfra, Tiebissou, Bondoukou, Tanda, Agnibilekro, Abengourou, Daoukro and Bongouanou and identified additional groups of population. A precise estimate of movement of population will be shared shortly.



# Humanitarian Challenges and Response

Page 5



DUEKOUÉ, CÔTE D-IVOIRE / UNHCR H. CAUX / 11 FEB. 2011

Due to the prevailing security situation, and in order to analyze the political situation in depth, UNHCR temporarily suspended all UNHCR Humanitarian activities in the West until further notice.

On 19<sup>th</sup> February, UNHCR emergency teams were relocated to Abidjan, anticipating that UNDSS will speak with a unified voice on security awareness for all UN agencies operating in the country.

moderate pace of arrival remains stable at 10 persons per day. 164 school kits have been distributed by ACORD to refugee youth. In addition, ACORD has ensured preparation and distribution of three hot meals per person per day. In Kouankan II refugee camp the systematic health check-up and vaccination are done upon arrival, and refugees are sensitized and informed on the medical services available in the camp, including HIV/AIDS support.

## SITUATION IN AFFECTED COUNTRIES

### GUINEA

A total of 901 refugees/asylum seekers including 71 unaccompanied minors, have been registered in Guinea both in the forest zone and in Conakry. The

### TOGO

A total of 284 Ivorian asylum seekers have been registered to date, and no cases of UAMs or separated children have been reported thus far. Most of the asylum seekers are residing in urban areas, with acquaintances, or at the train station. Victims of gender-based violence receive assistance from UNHCR and partner agencies. Six families in precarious situations have received financial assistance. ATBEF, an implementing partner on health issues, took care of 8 persons.

# Humanitarian Challenges and Response

Page 6

## **BURKINA FASO**

No new arrivals of Ivorian asylum seekers have been registered since last week. Specific assistance, including follow-up on health and social issues with partners and the follow-up on students in national schools, is ongoing. The UNCT will meet with Government next week to discuss preparation issues.

## **MALI**

The overall situation is quiet with no new arrivals since last week. Agro Action Allemande (AAA) has started construction work on the Zegoua transit centre. World Vision Mali has started drilling in the Zegoua and Mankoro transit centres.

## **GHANA**

The situation remains calm at the border between Ghana and Côte d'Ivoire, with no new arrivals since last week. Refugees are mainly accommodated in host communities and through private arrangements. A staff member from IOM is being deployed to the Western region to closely collaborate with UNHCR and NADMO in order to provide support on transportation and other issues related to third-country nationals and returnees.

UNHCR Ghana office is on high alert in the western region due to the prevailing security situation in Côte d'Ivoire. The preparatory activities, held in collaboration with partners, are mainly taking place at Ampein camp site, at the reception centers and at Elubo border crossings. Volunteers from Half-Assini and Elubo are on alert as well for the transit and reception centres. In addition, the Red Cross confirmed the availability of 20 volunteers from Takoradi ready to be deployed upon request. Provision of water tanks is ongoing through the involvement of NADMO and the National Catholic Services (NCS). Estimates for water supply, polytanks, and mobile toilet facilities have been submitted for approval.

A medical doctor from Eikwe Hospital, a medical assistant, two midwives, a community health nurse are on alert and a fully equipped mobile clinic is on standby. Tents used as health screening centers should be set up shortly. Furthermore, Esikado and Takoradi hospitals are alerted and ready to support if needed.

## **REGIONAL INTER AGENCY COORDINATION**

A regional MOU is being drafted as a common strategy between UNHCR and IOM with the objective of setting up a plan of joint action regarding presence at border points, joint screening, presence at transit centres, support to TCNs and returnees, and transport of refugees.

The regional inter-agency group CIV+5 will meet on 25<sup>th</sup> February at UNHCR Regional Office in Dakar, primarily to review contingency planning and preparation activities in the region.

UNHCR Regional Office in Dakar (RRWA) and UNHCR offices affected by the Côte d'Ivoire crisis are together reviewing their operational planning process (increase in planning figures, review of existing gaps and preparation for potential further influx) in order to provide a clear picture of the resources needed in case of additional influx, and also to be ready in case of a new EHAP submission.

# Humanitarian Challenges and Response

Page 7

## Funding

|                      | ExCom approved total budget | Supplementary budget | Total revised budget | Recorded income | Projected income | Total income        |
|----------------------|-----------------------------|----------------------|----------------------|-----------------|------------------|---------------------|
| <b>Liberia</b>       | \$ 10,665,886               | \$ 33,187,127        | <b>\$ 43,853,013</b> | \$ 923,213      | \$ 4,479,072     | <b>\$ 5,402,285</b> |
| <b>Côte d'Ivoire</b> |                             |                      |                      |                 |                  |                     |
| <b>+ 5</b>           | \$ 38,392,953               | \$ 10,623,671        | <b>\$ 49,016,624</b> | \$ 87,015       | \$ 100,000       | <b>\$ 187,015</b>   |
| <b>Total</b>         | \$ 49,058,839               | \$ 43,810,798        | <b>\$ 92,869,637</b> | \$ 1,010,228    | \$ 4,579,072     | <b>\$ 5,589,300</b> |

## Contact - UNHCR Regional Office for West Africa

**Gilbert Loubaki, Regional Representative a.i.**

[loubaki@unhcr.org](mailto:loubaki@unhcr.org) / +221 33 867 62 07

**Myriam Houtart, Assistant Regional Representative (Programme)**

[houtart@unhcr.org](mailto:houtart@unhcr.org) / +221 33 867 62 09

