



UNHCR

United Nations High Commissioner for Refugees
Haut Commissariat des Nations Unies pour les réfugiés

TRENDS IN REFUGEE STATUS DETERMINATION 1 JANUARY – 31 MARCH 2004

**ASYLUM APPLICATIONS, REFUGEE STATUS DETERMINATION
AND PENDING CASES IN 70, MOSTLY DEVELOPING, COUNTRIES**

30 JUNE 2004

**POPULATION DATA UNIT
POPULATION AND GEOGRAPHIC DATA SECTION
UNITED NATIONS HIGH COMMISSIONER FOR REFUGEES
GENEVA**

ALSO AVAILABLE AT: [HTTP://WWW.UNHCR.ORG/STATISTICS](http://www.unhcr.org/statistics)
CONTACT: HQCS00@UNHCR.ORG

INTRODUCTION

1. In many non-industrialized countries, UNHCR cooperates closely with governments in the process of individual refugee status determination. This report analyses refugee status determination data in 70 asylum countries for which statistics were available for the period 1 January to 31 March 2004. Trends in the size of the refugee population, new refugee arrivals, voluntary repatriation and resettlement departures in these 70 asylum countries are analyzed separately in the document *Global Refugee Trends, 1 January – 31 March 2004*.

2. The 70 countries covered by this document are mostly developing countries where UNHCR provides operational support to host Governments.¹ The main purpose of this report is to provide updated statistics for *individual* countries and operations.²

3. The statistics provided here should be considered as provisional, subject to change. The country codes used in the tables are explained in Annex I. The data provided in the tables generally refer to first instance procedures only. In the case of Burkina Faso, Lebanon, Nepal, Russian Federation and Togo the data on first instance and appeal/review have been combined.

Applications and decisions

4. From 1 January to 31 March 2004, some 16,400 applications for asylum or refugee status were recorded in the 70 asylum countries covered by this report. Out of the 14,600 refugee status determination decisions taken during the first quarter of 2004, 5,200 were positive (recognized), whereas 3,200 applications were rejected on substantive grounds. The refugee recognition rate in these countries for all nationalities combined during the first three months of 2004 stood at 36%. Some 5,600 claims were closed for other, non-substantive reasons, whereas 1,800 persons were allowed to remain for humanitarian reasons (see *Table 1*).

5. During the first three months of 2004, the number of applications for asylum or refugee status among the 70 countries exceeded 500 in seven countries, namely Ecuador (3,055), Malaysia (2,085), Egypt (1,855), Thailand (1,270), Jordan (1,180), Ethiopia (880) and Cameroon (770) (see *Table 1*).

6. In five of the 70 countries, the number of refugee status determination decisions taken during the first three months of 2004 was 500 or higher, namely in Ecuador (3,480), Egypt (3,290), Turkey (1,830), Thailand (1,070) and Yemen (520) (see *Table 1*).

Pending cases ("backlog")

7. The number of pending cases or backlog is a key indicator for the efficiency in deciding refugee claims as well as for the workload of the office responsible for the adjudication process. If the backlog of undecided cases has increased during the period, the number of new applications lodged exceeded the number of decisions. Conversely, a decrease in the number of pending cases shows that more cases have been decided than submitted. In the 70 countries with available data, the backlog decreased by almost 10% during the first quarter of 2004.

¹ For an overview of asylum trends in industrialized countries, see: <http://www.unhcr.org/statistics>, *Asylum Trends*.

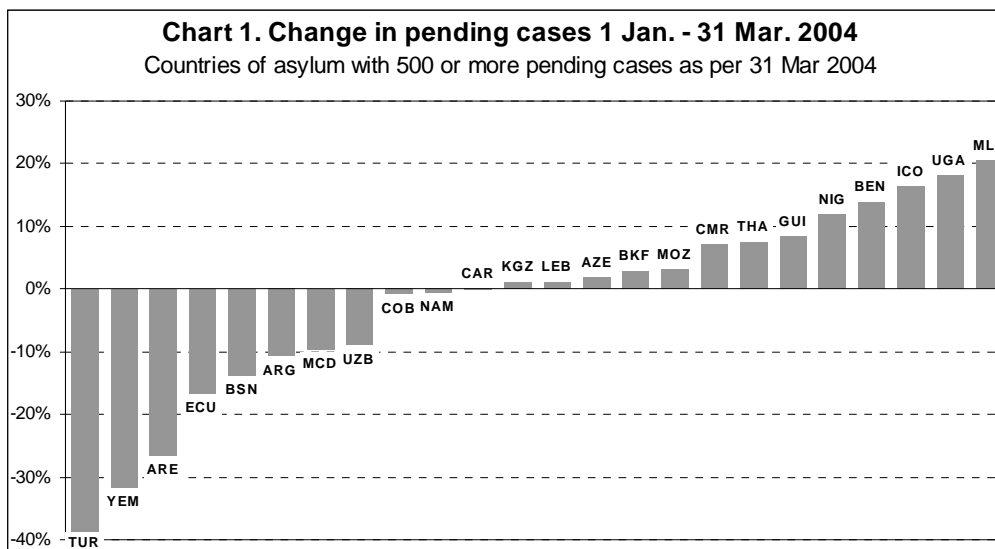
² For a comprehensive overview of global and regional trends in asylum and refugee status determination, see <http://www.unhcr.org/statistics>, *Global Refugee Trends*.

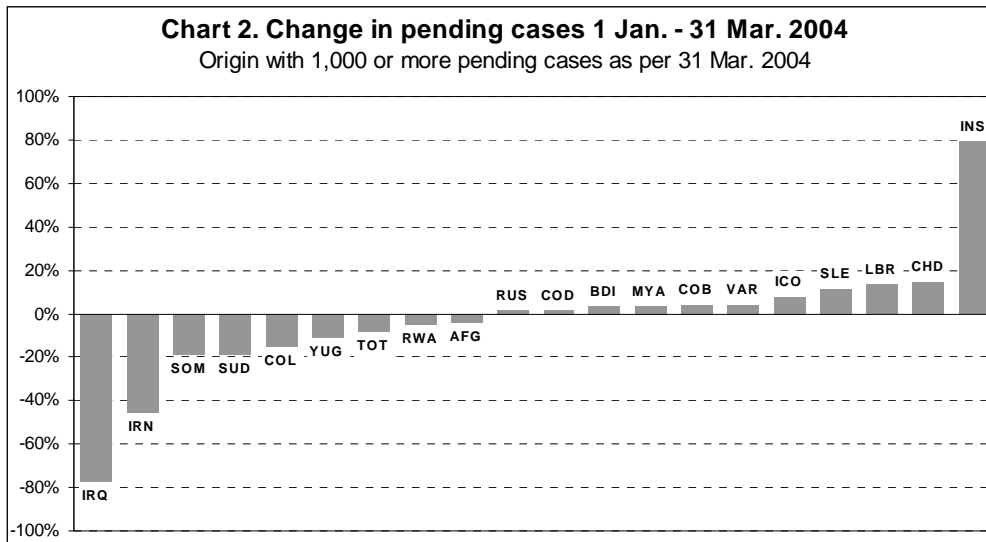
8. By the end of March 2004, there were 17 countries where the number of undecided applications for refugee status was more than 1,000. The highest number of pending cases was found in Malaysia (11,100), Mozambique (9,500), Azerbaijan (9,000), and Cameroon (6,100) and Egypt (4,000) (see Table 1).

9. At the end of March 2004, there were 24 countries with 500 or more decisions pending. Among these 24 countries, the number of undecided cases during the reporting period increased by 10% or more in Malaysia (20%), Uganda (18%), Cote d'Ivoire (16%), Benin (14%) and Nigeria (12%). Significant reductions in the backlog of undecided cases during the first quarter of 2004 were achieved in Turkey (-39%), Yemen (-32%) and Egypt (-27%) (see Table 1 and Chart 1).

10. In the 70 asylum countries which reported statistics, Colombian asylum-seekers submitted the largest number asylum claims (3,100), followed by nationals from Sudan (2,000), Indonesia (1,800), Iraq (1,300), Myanmar (1,250), the Democratic Republic of the Congo (780), Eritrea (780) and Liberia (530) (see Table 2).

11. Among the 19 nationalities with more than 1,000 undecided claims at the end of March 2004, the number of pending cases during the period increased for asylum-seekers from Sierra Leone (12%), Liberia (13%), Chad (14%) and Indonesia (79%). The number of nationalities which recorded an important decrease in undecided cases was larger and included asylum-seekers from Iraq (-78%), the Islamic Republic of Iran (-45%), Somalia (-19%), Sudan (-19%), Colombia (-16%) and Serbia and Montenegro (-11%) (see Table 2 and Chart 2).





TRENDS IN REFUGEE STATUS DETERMINATION, 1 JANUARY – 31 MARCH 2004
UNHCR GENEVA, 30 JUNE 2004

Table 1. Applications, refugee status determination and pending cases by country of asylum

Covering 70 countries of asylum which had reported statistics by the end of June 2004.

Data are provisional and subject to change.

| (Code) Country of asylum | Pending begin year | | Applied since 1 Jan. | Decisions since 1 January | | | | | Pending end- quarter | | Protection indicators | | |
|-----------------------------------|--------------------------|-------------------|----------------------------|---------------------------|-------|----------|-------------------|-------|----------------------------|-------------------|---------------------------------------|-------|-------------------------------|
| | Total | UNHCR assisted | | Recog- nized | Other | Rejected | Otherw. closed | Total | Total | UNHCR assisted | Recognition rates (excl. o/w. cl.) | | % change pend. cases |
| | | | | | | | | | | | Ref. status | Total | |
| ALG | 5 | - | - | - | - | - | - | - | 5 | 3 | .. | .. | 0% |
| ARE | 5,409 | - | 1,855 | 1,521 | - | 310 | 1,459 | 3,290 | 3,974 | - | 83% | 83% | -27% |
| ARG | 1,211 | 742 | 55 | 67 | - | 114 | 5 | 186 | 1,080 | 235 | 37% | 37% | -11% |
| ARM | 36 | - | 25 | - | 20 | 8 | 17 | 33 | 16 | - | 0% | 71% | -56% |
| AZE | 8,826 | 8,826 | 205 | 38 | - | 4 | - | 42 | 8,989 | 8,989 | 90% | 90% | 2% |
| BEN | 730 | - | 153 | 14 | - | 18 | 18 | 50 | 832 | - | 44% | 44% | 14% |
| BGD | 8 | - | 2 | - | - | - | - | - | 10 | - | .. | .. | 25% |
| BKF | 635 | - | 19 | - | - | - | - | - | 654 | - | .. | .. | 3% |
| BLR | 327 | - | 48 | 12 | - | 13 | 1 | 26 | 348 | - | 48% | 48% | 6% |
| BOL | 1 | 1 | 14 | - | - | - | - | - | 15 | 15 | .. | .. | 1400% |
| BRA | 582 | 582 | 99 | 18 | - | 43 | 132 | 193 | 488 | 488 | 30% | 30% | -16% |
| BSN | 701 | 701 | 34 | 26 | - | 75 | 30 | 131 | 604 | 604 | 26% | 26% | -14% |
| BZE | 8 | - | 24 | - | - | - | - | - | 32 | 19 | .. | .. | 300% |
| CAM | 47 | 16 | 52 | 7 | - | 4 | 19 | 30 | 69 | 60 | 64% | 64% | 47% |
| CAR | 3,397 | 2,236 | 60 | 26 | 29 | 8 | - | 63 | 3,394 | - | 41% | 87% | 0% |
| CHI | 43 | 3 | 99 | 10 | 1 | 14 | 5 | 30 | 112 | 4 | 40% | 44% | 160% |
| CHL | 47 | 17 | 21 | - | - | - | - | - | 68 | 19 | .. | .. | 45% |
| CMR | 5,675 | - | 774 | 137 | - | 219 | 20 | 376 | 6,073 | - | 38% | 38% | 7% |
| COB | 3,224 | - | 11 | 8 | - | 26 | 4 | 38 | 3,197 | - | 24% | 24% | -1% |
| CUB | 6 | 3 | 2 | 2 | - | 2 | 1 | 5 | 3 | 1 | 50% | 50% | -50% |
| CYP | 229 | - | 33 | 10 | - | 91 | 93 | 194 | 68 | 68 | 10% | 10% | -70% |
| ECU | 2,565 | 2,565 | 3,056 | 518 | - | 1,115 | 1,852 | 3,483 | 2,137 | 2,137 | 32% | 32% | -17% |
| ETH | 10 | 10 | 878 | 694 | 183 | 2 | 1 | 5 | 8 | 8 | 79% | 100% | -20% |
| GEO | 2 | - | - | - | - | 2 | - | 2 | - | - | 0% | 0% | -100% |
| GUA | 2 | - | - | - | - | - | - | - | 2 | - | .. | .. | 0% |
| GUI | 2,544 | - | 355 | 140 | - | - | - | 140 | 2,759 | - | 100% | 100% | 8% |
| HON | - | - | 20 | - | - | - | - | - | 20 | 20 | .. | .. | .. |
| HRV | 57 | 58 | 62 | 6 | - | 34 | 44 | 84 | 35 | 69 | 15% | 15% | -39% |
| HUN | 290 | - | 367 | 23 | 90 | 199 | 68 | 380 | 277 | - | 7% | 36% | -4% |
| ICO | 1,321 | 1,321 | 264 | 22 | - | 27 | - | 49 | 1,536 | 1,536 | 45% | 45% | 16% |
| JOR | 6,740 | - | 1,184 | 78 | 18 | 12 | 7 | 79 | 103 | 7,899 | 72% | 89% | -98% |
| KAZ | 4 | - | 31 | 19 | - | 10 | - | 1 | 6 | - | 66% | 66% | 50% |
| KGZ | 635 | - | 60 | 39 | - | 8 | 6 | 53 | 642 | - | 83% | 83% | 1% |
| KOR | 139 | 136 | 18 | - | - | - | 7 | 7 | 150 | 147 | .. | .. | 8% |
| KUW | 186 | 186 | 10 | - | - | - | - | - | 196 | 192 | .. | .. | 5% |
| LBY | 58 | - | 181 | 113 | - | - | - | 113 | 125 | - | 100% | 100% | 116% |
| LEB | 543 | - | 63 | 4 | - | 32 | 21 | 57 | 549 | - | 11% | 11% | 1% |
| LKA | 6 | 6 | 29 | 10 | - | 2 | 3 | 15 | 20 | 20 | 83% | 83% | 233% |
| LTU | 96 | 96 | 23 | 5 | 11 | 14 | 44 | 74 | 45 | 45 | 17% | 53% | -53% |
| LVA | - | - | 3 | - | - | - | - | - | 3 | - | .. | .. | .. |
| MAU | 55 | 55 | 33 | 33 | - | - | - | 33 | 55 | - | 100% | 100% | 0% |
| MCD | 2,285 | 2,285 | 23 | - | 200 | - | 44 | 244 | 2,064 | 2,064 | 0% | 100% | -10% |
| MDA | 140 | 140 | 41 | - | - | 1 | 22 | 23 | 158 | 158 | 0% | 0% | 13% |
| MEX | 82 | - | 85 | 7 | - | 39 | 22 | 68 | 99 | - | 15% | 15% | 21% |
| MLS | 9,205 | 85 | 2,085 | 170 | 8 | 25 | - | 203 | 11,087 | - | 84% | 88% | 20% |
| MOZ | 9,225 | 4,494 | 385 | - | - | - | 89 | - | 9,521 | 4,852 | .. | .. | 3% |
| NAM | 1,986 | 1,986 | 101 | - | - | - | 1 | - | 1,972 | 1,972 | .. | .. | -1% |
| NEP | 237 | 16 | 9 | - | 46 | 1 | 8 | 55 | 187 | 11 | 0% | 98% | -21% |
| NGR | 13 | - | 4 | - | - | - | - | - | 17 | - | .. | .. | 31% |
| NIG | 1,124 | 1,124 | 135 | - | - | - | - | - | 1,259 | 1,259 | .. | .. | 12% |
| PAR | 4 | 4 | 8 | 2 | - | - | - | 2 | 10 | 10 | 100% | 100% | 150% |

TRENDS IN REFUGEE STATUS DETERMINATION, 1 JANUARY – 31 MARCH 2004
UNHCR GENEVA, 30 JUNE 2004

Table 1 (continued)

| (Code) Country of asylum | Pending begin year | | Applied since 1 Jan. | Decisions since 1 January | | | | | Pending end- quarter | | Protection indicators | | |
|-----------------------------------|--------------------------|-------------------|----------------------------|---------------------------|-------|----------|-------------------|--------|----------------------------|-------------------|---------------------------------------|-------|-------------------------------|
| | Total | UNHCR assisted | | Recog- nized | Other | Rejected | Otherw. closed | Total | Total | UNHCR assisted | Recognition rates (excl. o/w. cl.) | | % change pend. cases |
| | | | | | | | | | | | Ref. status | Total | |
| PHI | 38 | - | 2 | - | - | - | - | - | 40 | - | .. | .. | 5% |
| PNG | 306 | 2 | - | - | - | - | - | - | 306 | 2 | .. | .. | 0% |
| RUS | 272 | 272 | 236 | 12 | 94 | 184 | - | 196 | 312 | 312 | 4% | 37% | 15% |
| SAL | 3 | 3 | 2 | - | - | - | 1 | 1 | 4 | 2 | .. | .. | 33% |
| SAU | 158 | - | 56 | - | 6 | 14 | 8 | 28 | 186 | - | 0% | 30% | 18% |
| SIN | 2 | 2 | - | - | - | - | - | - | 2 | 2 | .. | .. | 0% |
| SVN | 171 | 171 | 361 | 7 | 12 | 91 | 263 | 373 | 159 | 159 | 6% | 17% | -7% |
| TAN | 163 | 163 | - | - | - | - | - | - | 163 | 163 | .. | .. | 0% |
| THA | 2,657 | - | 1,271 | 460 | - | 108 | 503 | 1,071 | 2,857 | - | 81% | 81% | 8% |
| TJK | 440 | 7 | 64 | 1 | - | 96 | - | 97 | 407 | 16 | 1% | 1% | -8% |
| TOG | 333 | - | 87 | 51 | - | - | - | 51 | 363 | - | 100% | 100% | 9% |
| TUR | 3,453 | 3,453 | 497 | 592 | 1,035 | 35 | 167 | 1,829 | 2,121 | 2,121 | 36% | 98% | -39% |
| UAE | 63 | - | 16 | 17 | - | 7 | - | 24 | 55 | - | 71% | 71% | -13% |
| UGA | 726 | - | 419 | 223 | - | - | 65 | 288 | 857 | - | 100% | 100% | 18% |
| URU | 9 | - | 1 | 3 | - | - | - | 3 | 7 | 5 | 100% | 100% | -22% |
| UZB | 1,192 | 1,192 | 41 | 12 | - | 55 | 135 | 138 | 1,086 | 1,086 | 18% | 18% | -9% |
| YEM | 1,066 | 1,066 | 183 | 55 | 12 | 70 | 384 | 521 | 728 | 728 | 40% | 49% | -32% |
| YUG | 32 | 32 | 15 | 3 | - | 14 | 14 | 31 | 16 | 16 | 18% | 18% | -50% |
| ZAM | 19 | - | 72 | 23 | - | 32 | - | 55 | 36 | - | 42% | 42% | 89% |
| Total | 81,804 | 34,057 | 16,421 | 5,238 | 1,765 | 3,178 | 5,583 | 14,563 | 74,778 | 37,516 | 51% | 69% | -9% |

TRENDS IN REFUGEE STATUS DETERMINATION, 1 JANUARY – 31 MARCH 2004
UNHCR GENEVA, 30 JUNE 2004

Table 2. Applications, refugee status determination and pending cases by origin

Covering 70 countries of asylum which had reported statistics by the end of June 2004.

Figures between 1 and 4 have been replaced by an asterisk.

Data are provisional and subject to change.

| (Code) Origin | Pending begin year | | Applied since 1 Jan. | Decisions since 1 January | | | | | Pending end-quarter | | Protection indicators | | |
|------------------|--------------------|----------------|----------------------|---------------------------|-------|----------|----------------|-------|---------------------|----------------|------------------------------------|-------|----------------------|
| | Total | UNHCR assisted | | Recognized | Other | Rejected | Otherw. closed | Total | Total | UNHCR assisted | Recognition rates (excl. o/w. cl.) | | % change pend. cases |
| | | | | | | | | | | | Ref. status | Total | |
| AFG | 3,247 | 2,458 | 417 | 118 | 28 | 317 | 132 | 517 | 3,120 | 2,393 | 25% | 32% | -4% |
| ALB | 16 | 14 | 41 | - | - | 7 | 38 | 45 | 12 | 6 | 0% | 0% | -25% |
| ALG | 66 | 31 | 37 | * | - | 14 | 37 | 53 | 50 | 35 | 13% | 13% | -24% |
| ANG | 196 | 103 | 20 | * | - | 10 | - | 11 | 205 | 105 | 9% | 9% | 5% |
| ARE | 50 | 30 | 32 | - | - | 10 | 10 | 20 | 45 | 62 | 0% | 0% | -10% |
| ARM | 63 | 43 | * | 7 | - | 6 | - | 13 | 51 | 11 | 54% | 54% | -19% |
| AZE | 31 | 7 | 8 | * | * | - | - | 5 | 34 | 5 | 60% | 100% | 10% |
| BDI | 1,977 | 1,045 | 113 | 20 | * | 8 | 16 | 33 | 2,043 | 1,086 | 65% | 74% | 3% |
| BEN | 16 | * | - | - | - | - | - | - | 16 | * | .. | .. | 0% |
| BGD | 174 | 24 | 18 | * | - | - | * | 5 | 187 | 33 | 100% | 100% | 7% |
| BHU | 206 | - | * | - | 46 | * | - | 47 | 159 | - | 0% | 98% | -23% |
| BKF | 6 | * | - | - | - | - | - | - | 6 | * | .. | .. | 0% |
| BSN | 17 | 11 | 16 | - | * | 7 | 8 | 16 | 17 | 16 | 0% | 13% | 0% |
| BUL | 8 | * | * | - | - | * | - | * | 10 | 5 | 0% | 0% | 25% |
| CAM | 61 | 8 | 20 | 19 | - | 6 | * | 26 | 55 | 6 | 76% | 76% | -10% |
| CAR | 595 | 162 | 483 | 52 | - | 87 | 18 | 156 | 921 | 187 | 37% | 37% | 55% |
| CHD | 1,060 | 14 | 189 | 9 | - | 19 | 8 | 36 | 1,213 | 13 | 32% | 32% | 14% |
| CHI | 117 | 48 | 55 | * | - | 9 | 8 | 19 | 151 | 60 | 31% | 31% | 29% |
| CHL | 6 | 6 | - | - | - | - | - | - | 6 | - | .. | .. | 0% |
| CMR | 109 | 69 | 12 | - | - | - | * | * | 119 | 72 | .. | .. | 9% |
| COB | 1,481 | 651 | 88 | 15 | * | 11 | * | 30 | 1,539 | 679 | 54% | 61% | 4% |
| COD | 15,721 | 6,001 | 782 | 237 | 23 | 133 | 106 | 438 | 16,004 | 4,829 | 60% | 66% | 2% |
| COL | 2,665 | 2,624 | 3,076 | 522 | - | 1,115 | 1,856 | 3,493 | 2,248 | 2,166 | 32% | 32% | -16% |
| CUB | 181 | 121 | 44 | 21 | - | 17 | 5 | 43 | 182 | 81 | 55% | 55% | 1% |
| DJB | 10 | - | - | - | - | - | - | - | 10 | - | .. | .. | 0% |
| DOM | 10 | * | * | - | - | - | * | * | 12 | 5 | .. | .. | 20% |
| ECU | * | * | * | - | - | - | - | - | 7 | 6 | .. | .. | 75% |
| EGU | 5 | * | * | - | - | - | - | - | 8 | * | .. | .. | 60% |
| ERT | 300 | 20 | 779 | 729 | - | 14 | 40 | 89 | 296 | 18 | 98% | 98% | -1% |
| EST | 7 | 6 | - | - | - | - | - | - | 7 | * | .. | .. | 0% |
| ETH | 1,180 | 522 | 188 | 89 | - | 95 | 454 | 638 | 730 | 141 | 48% | 48% | -38% |
| GAZ | 316 | 250 | 52 | 17 | 14 | 24 | 20 | 75 | 293 | 226 | 31% | 56% | -7% |
| GEO | 73 | 28 | 58 | 10 | 56 | 28 | 10 | 50 | 81 | 31 | 11% | 70% | 11% |
| GHA | 36 | 15 | 6 | - | - | * | - | * | 39 | 20 | 0% | 0% | 8% |
| GNB | 37 | 35 | * | - | - | * | * | * | 34 | 34 | 0% | 0% | -8% |
| GUA | 15 | * | * | * | - | 6 | 5 | 13 | 6 | * | 25% | 25% | -60% |
| GUI | 96 | 38 | 31 | - | - | * | 7 | 10 | 113 | 35 | 0% | 0% | 18% |
| HAI | 49 | 36 | 33 | - | - | * | 5 | 6 | 76 | 46 | 0% | 0% | 55% |
| HON | 9 | - | 12 | - | - | 8 | * | 9 | 12 | - | 0% | 0% | 33% |
| ICO | 1,388 | 51 | 197 | 81 | - | 6 | - | 87 | 1,498 | 45 | 93% | 93% | 8% |
| IND | 56 | 26 | 39 | * | - | * | 22 | 27 | 68 | 35 | 20% | 20% | 21% |
| INS | 2,099 | 26 | 1,819 | 159 | - | * | - | 160 | 3,758 | - | 99% | 99% | 79% |
| IRN | 2,896 | 2,752 | 407 | 578 | 1,040 | 58 | 41 | 1,714 | 1,586 | 1,482 | 34% | 97% | -45% |
| IRQ | 8,461 | 1,031 | 1,320 | 85 | 61 | 33 | 189 | 326 | 1,900 | 8,686 | 47% | 82% | -78% |
| JOR | 20 | 6 | 7 | - | - | * | 5 | 6 | 21 | 8 | 0% | 0% | 5% |
| KAZ | 15 | 6 | 8 | 5 | - | 7 | - | 12 | 11 | * | 42% | 42% | -27% |
| KEN | 12 | 6 | - | - | - | - | * | * | 10 | * | .. | .. | -17% |
| KGZ | 21 | 13 | - | * | - | 5 | 9 | 16 | 5 | * | 38% | 38% | -76% |
| KRN | 18 | - | 8 | - | - | - | 17 | 17 | 9 | - | .. | .. | -50% |
| LBR | 2,241 | 1,127 | 534 | 208 | 8 | 10 | 11 | 237 | 2,538 | 1,204 | 92% | 96% | 13% |

TRENDS IN REFUGEE STATUS DETERMINATION, 1 JANUARY – 31 MARCH 2004
UNHCR GENEVA, 30 JUNE 2004

Table 2 (continued)

| (Code) Origin | Pending begin year | | Applied since 1 Jan. | Decisions since 1 January | | | | | Pending end-quarter | | Protection indicators | | |
|------------------|--------------------|----------------|----------------------|---------------------------|-------|----------|----------------|--------|---------------------|----------------|------------------------------------|-------|----------------------|
| | Total | UNHCR assisted | | Recog-nized | Other | Rejected | Otherw. closed | Total | Total | UNHCR assisted | Recognition rates (excl. o/w. cl.) | | % change pend. cases |
| | | | | | | | | | | | Ref. status | Total | |
| LBY | 13 | * | * | - | - | - | * | * | 13 | 5 | .. | .. | 0% |
| LKA | 242 | 36 | 60 | * | - | 13 | 29 | 43 | 259 | 28 | 7% | 7% | 7% |
| MAU | 13 | 8 | 9 | - | - | 7 | * | 9 | 12 | 7 | 0% | 0% | -8% |
| MCD | 134 | 134 | 23 | - | * | 37 | 19 | 59 | 98 | 98 | 0% | 8% | -27% |
| MDA | 20 | 14 | 13 | - | - | * | 11 | 14 | 19 | 13 | 0% | 0% | -5% |
| MLI | 5 | * | 5 | - | - | - | - | - | 8 | 6 | .. | .. | 60% |
| MLW | 5 | - | - | - | - | - | - | - | 5 | - | .. | .. | 0% |
| MOR | 10 | 8 | * | - | - | - | * | * | 12 | 8 | .. | .. | 20% |
| MYA | 9,024 | 68 | 1,258 | 410 | 5 | 108 | 399 | 922 | 9,360 | 46 | 78% | 79% | 4% |
| NEP | 7 | - | - | - | - | - | - | - | 7 | - | .. | .. | 0% |
| NGR | 13 | * | 5 | - | - | 5 | - | 5 | 13 | - | 0% | 0% | 0% |
| NIG | 181 | 67 | 79 | 12 | - | 13 | 27 | 52 | 208 | 58 | 48% | 48% | 15% |
| PAK | 134 | 42 | 133 | 14 | - | 21 | 25 | 60 | 207 | 57 | 40% | 40% | 54% |
| PER | 563 | 305 | 40 | 9 | - | 80 | 6 | 95 | 508 | 121 | 10% | 10% | -10% |
| ROM | 177 | 164 | 10 | - | - | 9 | 120 | 129 | 58 | 45 | 0% | 0% | -67% |
| RUS | 8,251 | 7,727 | 224 | 26 | 6 | 36 | 44 | 112 | 8,363 | 7,839 | 38% | 47% | 1% |
| RWA | 2,764 | 1,354 | 88 | 47 | * | 55 | 16 | 105 | 2,619 | 1,222 | 46% | 47% | -5% |
| SAL | * | - | 19 | - | - | * | - | * | 19 | - | 0% | 0% | 1800% |
| SAU | 8 | * | - | - | - | - | - | - | 8 | * | .. | .. | 0% |
| SEN | 91 | 76 | * | 8 | - | 14 | - | 22 | 72 | 18 | 36% | 36% | -21% |
| SLE | 1,488 | 183 | 231 | 27 | * | 26 | * | 58 | 1,660 | 282 | 50% | 52% | 12% |
| SOM | 2,523 | 246 | 326 | 281 | * | 38 | 494 | 815 | 2,034 | 316 | 88% | 88% | -19% |
| SRV | 80 | 17 | 58 | * | - | 6 | 21 | 31 | 107 | 58 | 40% | 40% | 34% |
| STA | 28 | 15 | 24 | * | - | 6 | * | 9 | 29 | 34 | 14% | 14% | 4% |
| SUD | 3,685 | 844 | 1,962 | 1,255 | 182 | 285 | 911 | 2,457 | 2,982 | 236 | 73% | 83% | -19% |
| SYR | 224 | 89 | 32 | 31 | - | 7 | 20 | 62 | 139 | 135 | 82% | 82% | -38% |
| TAN | 39 | 37 | 5 | * | - | * | * | * | 41 | 36 | 50% | 50% | 5% |
| TJK | 40 | 22 | - | - | - | - | 9 | - | 31 | 13 | .. | .. | -23% |
| TKM | * | * | 12 | - | - | * | 8 | 8 | 7 | 6 | 0% | 0% | 133% |
| TOG | 311 | 53 | 30 | 17 | - | * | * | 21 | 319 | 52 | 85% | 85% | 3% |
| TUN | 19 | 14 | 5 | - | - | * | * | * | 21 | 18 | 0% | 0% | 11% |
| TUR | 54 | 20 | 164 | * | * | 36 | 99 | 138 | 79 | 50 | 5% | 12% | 46% |
| UGA | 47 | 13 | * | - | - | - | - | - | 50 | 15 | .. | .. | 6% |
| UKR | 25 | 19 | 5 | - | - | * | * | * | 24 | 6 | 0% | 0% | -4% |
| UZB | 22 | 21 | 25 | 7 | - | 5 | - | 12 | 35 | 33 | 58% | 58% | 59% |
| VEN | 7 | - | * | - | - | - | 5 | 5 | 6 | * | .. | .. | -14% |
| YEM | 11 | 6 | - | * | * | - | * | * | 7 | 5 | 67% | 100% | -36% |
| YUG | 2,942 | 2,888 | 135 | 36 | 207 | 106 | 107 | 456 | 2,621 | 2,597 | 10% | 70% | -11% |
| ZIM | 20 | * | - | - | - | - | * | * | 19 | * | .. | .. | -5% |
| Total | 81,804 | 34,057 | 16,421 | 5,238 | 1,765 | 3,178 | 5,583 | 14,563 | 74,778 | 37,516 | 51% | 69% | -9% |

TRENDS IN REFUGEE STATUS DETERMINATION, 1 JANUARY – 31 MARCH 2004
UNHCR GENEVA, 30 JUNE 2004

Table 3. Applications, refugee status determination and pending cases by origin and country of asylum

Covering 70 countries of asylum which had reported statistics by the end of June 2004.

Only including nationalities in countries, with 25 or more applications during the first three months of 2004.

Figures between 1 and 4 have been replaced by an asterisk.

Data are provisional and subject to change.

| Origin | Country of asylum | Pending begin year | | Applied since 1 Jan. | Decisions since 1 January | | | | | Pending end-quarter | | Protection indicators | | |
|--------|-------------------|--------------------|----------------|----------------------|---------------------------|-------|----------|----------------|-------|---------------------|----------------|------------------------------------|-------|----------------------|
| | | Total | UNHCR assisted | | Recognized | Other | Rejected | Otherw. closed | Total | Total | UNHCR assisted | Recognition rates (excl. o/w. cl.) | | % change pend. cases |
| | | | | | | | | | | | | Ref. status | Total | |
| AFG | HUN | 40 | - | 25 | * | 26 | * | 8 | 37 | 28 | - | 3% | 93% | -30% |
| AFG | KAZ | * | - | 28 | 19 | - | 8 | - | - | * | - | 70% | 70% | 50% |
| AFG | KGZ | 109 | - | 32 | 39 | - | 5 | - | 44 | 97 | - | 89% | 89% | -11% |
| AFG | RUS | 234 | 234 | 180 | 10 | - | 143 | - | 153 | 261 | 261 | 7% | 7% | 12% |
| AFG | TJK | 433 | - | 56 | * | - | 94 | - | 95 | 394 | * | 1% | 1% | -9% |
| AFG | TUR | 44 | 44 | 30 | 7 | - | * | - | 8 | 66 | 66 | 88% | 88% | 50% |
| AFG | UZB | 1,146 | 1,146 | 31 | 12 | - | 51 | 111 | 123 | 1,054 | 1,054 | 19% | 19% | -8% |
| ALB | SVN | * | * | 41 | - | - | 7 | 36 | 43 | * | * | 0% | 0% | -50% |
| BDI | MOZ | 1,538 | 707 | 38 | - | - | - | 14 | - | 1,562 | 733 | .. | .. | 2% |
| BDI | UGA | 47 | - | 37 | 6 | - | - | - | 6 | 78 | - | 100% | 100% | 66% |
| CAR | CMR | 313 | - | 452 | 47 | - | 83 | 16 | 146 | 619 | - | 36% | 36% | 98% |
| CAR | ICO | - | - | 27 | - | - | * | - | * | 26 | 26 | 0% | 0% | .. |
| CHD | CMR | 625 | - | 180 | 5 | - | 15 | - | 20 | 785 | - | 25% | 25% | 26% |
| CHI | ROM | 66 | 146 | 43 | - | - | 38 | 9 | 47 | 15 | 15 | 0% | 0% | -77% |
| COB | ICO | 622 | 622 | 40 | 6 | - | * | - | 10 | 652 | 652 | 60% | 60% | 5% |
| COD | CMR | 3,177 | - | 70 | 38 | - | 65 | * | 105 | 3,142 | - | 37% | 37% | -1% |
| COD | ICO | 204 | 204 | 31 | 16 | - | 7 | - | 23 | 212 | 212 | 70% | 70% | 4% |
| COD | MOZ | 5,995 | 3,223 | 242 | - | - | - | 61 | - | 6,176 | 3,452 | .. | .. | 3% |
| COD | NAM | 998 | 998 | 94 | - | - | - | - | - | 1,092 | 1,092 | .. | .. | 9% |
| COD | TOG | * | - | 30 | 6 | - | - | - | 6 | 25 | - | 100% | 100% | 2400% |
| COD | UGA | 149 | - | 228 | 142 | - | - | 36 | 178 | 199 | - | 100% | 100% | 34% |
| COD | ZAM | 5 | - | 32 | 6 | - | 21 | - | 27 | 10 | - | 22% | 22% | 100% |
| COL | ECU | 2,526 | 2,526 | 3,029 | 511 | - | 1,107 | 1,852 | 3,470 | 2,085 | 2,085 | 32% | 32% | -17% |
| ERT | ARE | 221 | - | 30 | 19 | - | 8 | 23 | 50 | 201 | - | 70% | 70% | -9% |
| ERT | ETH | - | - | 694 | 694 | - | - | - | - | - | - | 100% | 100% | .. |
| ERT | YEM | 5 | 5 | 25 | 6 | - | 5 | 14 | 25 | 5 | 5 | 55% | 55% | 0% |
| ETH | ARE | 507 | - | 52 | 38 | - | 29 | 76 | 143 | 416 | - | 57% | 57% | -18% |
| ETH | UGA | 111 | - | 61 | 8 | - | - | 29 | 37 | 135 | - | 100% | 100% | 22% |
| ETH | YEM | 444 | 444 | 54 | 38 | - | 49 | 341 | 428 | 70 | 70 | 44% | 44% | -84% |
| GEO | HUN | 11 | - | 26 | - | * | 16 | 7 | 25 | 12 | - | 0% | 11% | 9% |
| ICO | GUI | 712 | - | 121 | 49 | - | - | - | 49 | 784 | - | 100% | 100% | 10% |
| IND | ROM | 17 | 162 | 45 | - | - | 46 | - | 46 | 16 | 31 | 0% | 0% | -6% |
| INS | MLS | 1,794 | 26 | 1,819 | 159 | - | * | - | 160 | 3,453 | - | 99% | 99% | 92% |
| IRN | TUR | 2,511 | 2,511 | 323 | 564 | 1,035 | 10 | - | 1,609 | 1,225 | 1,225 | 35% | 99% | -51% |
| IRQ | JOR | 6,517 | - | 1,147 | 65 | 12 | 12 | * | 48 | 61 | 7,668 | 73% | 87% | -99% |
| IRQ | LEB | 487 | - | 30 | - | - | - | 6 | 6 | 511 | - | .. | .. | 5% |
| IRQ | ROM | 108 | 423 | 42 | 6 | * | 17 | 8 | 34 | 116 | 53 | 23% | 35% | 7% |
| IRQ | YEM | 276 | 276 | 36 | - | - | - | * | * | 308 | 308 | .. | .. | 12% |
| LBR | CAR | 33 | - | 28 | * | * | * | - | 5 | 56 | - | 20% | 60% | 70% |
| LBR | GUI | 610 | - | 185 | 66 | - | - | - | 66 | 729 | - | 100% | 100% | 20% |
| LBR | LBY | 6 | - | 99 | 92 | - | - | - | 92 | 13 | - | 100% | 100% | 117% |
| LBR | MAU | 20 | 20 | 31 | 31 | - | - | - | 31 | 20 | - | 100% | 100% | 0% |
| LBR | NIG | 1,005 | 1,005 | 113 | - | - | - | - | - | 1,118 | 1,118 | .. | .. | 11% |
| LKA | MLS | 146 | - | 29 | - | - | * | - | * | 174 | - | 0% | 0% | 19% |
| MYA | MLS | 1,928 | - | 33 | - | - | * | - | * | 1,958 | - | 0% | 0% | 2% |
| MYA | MLS | 1,418 | 16 | 100 | - | - | 15 | - | 15 | 1,503 | - | 0% | 0% | 6% |
| MYA | THA | 1,968 | - | 1,046 | 410 | - | 86 | 397 | 893 | 2,121 | - | 83% | 83% | 8% |
| NIG | BEN | 19 | - | 53 | 5 | - | - | 18 | 23 | 49 | - | 100% | 100% | 158% |
| PAK | CHI | 18 | - | 81 | 7 | - | * | 5 | 14 | 85 | - | 78% | 78% | 372% |

TRENDS IN REFUGEE STATUS DETERMINATION, 1 JANUARY – 31 MARCH 2004
UNHCR GENEVA, 30 JUNE 2004

Table 3 (continued)

| Origin | Country of asylum | Pending begin year | | Applied since 1 Jan. | Decisionssince1January | | | | | Pending end-quarter | | Protection indicators | | |
|--------|-------------------|--------------------|----------------|----------------------|------------------------|-------|----------|----------------|-------|---------------------|----------------|------------------------------------|-------|----------------------|
| | | Total | UNHCR assisted | | Recognized | Other | Rejected | Otherw. closed | Total | Total | UNHCR assisted | Recognition rates (excl. o/w. cl.) | | % change pend. cases |
| | | | | | | | | | | | | Ref. status | Total | |
| RUS | AZE | 7,620 | 7,620 | 172 | 17 | - | - | - | 17 | 7,775 | 7,775 | 100% | 100% | 2% |
| RWA | UGA | 182 | - | 47 | - | - | - | - | - | 229 | - | .. | .. | 26% |
| SLE | GUI | 1,166 | - | 47 | 13 | - | - | - | 13 | 1,200 | - | 100% | 100% | 3% |
| SLE | ICO | 77 | 77 | 158 | - | - | 13 | - | 13 | 222 | 222 | 0% | 0% | 188% |
| SOM | ARE | 1,807 | - | 82 | 256 | - | 11 | 428 | 695 | 1,194 | - | 96% | 96% | -34% |
| SOM | LBY | 9 | - | 25 | * | - | - | - | * | 33 | - | 100% | 100% | 267% |
| SOM | MOZ | 307 | 34 | 94 | - | - | - | - | - | 401 | 126 | .. | .. | 31% |
| SOM | SAU | 17 | - | 29 | - | - | 14 | - | 14 | 32 | - | 0% | 0% | 88% |
| SOM | TUR | 134 | 134 | 50 | * | - | 5 | 64 | 73 | 111 | 111 | 44% | 44% | -17% |
| SRV | CAM | 34 | 9 | 50 | * | - | * | 17 | 23 | 61 | 52 | 33% | 33% | 79% |
| SUD | ARE | 2,373 | - | 1,654 | 1,193 | - | 257 | 887 | 2,337 | 1,690 | - | 82% | 82% | -29% |
| SUD | ETH | - | - | 180 | - | 180 | - | - | - | - | - | 0% | 100% | .. |
| SUD | UGA | 71 | - | 26 | 58 | - | - | - | 58 | 39 | - | 100% | 100% | -45% |
| SUD | YEM | 60 | 60 | 61 | - | - | 15 | * | 18 | 103 | 103 | 0% | 0% | 72% |
| TOG | BEN | 118 | - | 27 | 5 | - | * | - | 7 | 138 | - | 71% | 71% | 17% |
| TUR | HUN | 7 | - | 48 | - | * | 18 | 7 | 28 | 27 | - | 0% | 14% | 286% |
| TUR | SVN | 10 | 10 | 103 | - | - | 5 | 82 | 87 | 26 | 26 | 0% | 0% | 160% |
| YUG | SVN | 68 | 68 | 72 | * | 7 | 29 | 49 | 86 | 54 | 54 | 3% | 22% | -21% |

TRENDS IN REFUGEE STATUS DETERMINATION, 1 JANUARY – 31 MARCH 2004
UNHCR GENEVA, 30 JUNE 2004

| Annex I. List of country codes | | | | | |
|---------------------------------------|------------------------|------|-----------------------------|------|-------------------------|
| Code | Country name | Code | Country name | Code | Country name |
| AFG | Afghanistan | GNB | Guinea-Bissau | NRU | Nauru |
| ALB | Albania | GRE | Greece | NZL | New Zealand |
| ALG | Algeria | GRN | Grenada | OMN | Oman |
| AND | Andorra | GUA | Guatemala | PAK | Pakistan |
| ANG | Angola | GUI | Guinea | PAN | Panama |
| ANT | Antigua and Barbuda | GUY | Guyana | PAR | Paraguay |
| ARE | Egypt | HAI | Haiti | PER | Peru |
| ARG | Argentina | HKG | Hong Kong | PHI | Philippines |
| ARM | Armenia | HON | Honduras | PLW | Palau |
| AUL | Australia | HRV | Croatia | PNG | Papua New Guinea |
| AUS | Austria | HUN | Hungary | POL | Poland |
| AZE | Azerbaijan | ICE | Iceland | POR | Portugal |
| BAH | Bahrain | ICO | Côte d'Ivoire | PUE | Puerto Rico |
| BAR | Barbados | IND | India | QAT | Qatar |
| BDI | Burundi | INS | Indonesia | ROM | Romania |
| BEL | Belgium | IRE | Ireland | RSA | South Africa |
| BEN | Benin | IRN | Islamic Rep. of Iran | RUS | Russian Federation |
| BGD | Bangladesh | IRQ | Iraq | RWA | Rwanda |
| BHS | Bahamas | ISR | Israel | SAL | El Salvador |
| BHU | Bhutan | ITA | Italy | SAU | Saudi Arabia |
| BKF | Burkina Faso | JAM | Jamaica | SEN | Senegal |
| BLR | Belarus | JOR | Jordan | SEY | Seychelles |
| BOL | Bolivia | JPN | Japan | SIN | Singapore |
| BOT | Botswana | KAZ | Kazakistan | SLE | Sierra Leone |
| BRA | Brazil | KEN | Kenya | SMA | San Marino |
| BRU | Brunei Darussalam | KGZ | Kyrgyzstan | SOL | Solomon Islands |
| BSN | Bosnia and Herzegovina | KIR | Kiribati | SOM | Somalia |
| BUL | Bulgaria | KOR | Rep. of Korea | SPA | Spain |
| BZE | Belize | KRN | Dem. People's Rep. of Korea | SRV | Viet Nam |
| CAM | Cambodia | KUW | Kuwait | STK | Saint Kitts and Nevis |
| CAN | Canada | LAO | Lao People's Dem. Rep. | STP | Sao Tome and Principe |
| CAR | Central African Rep. | LBR | Liberia | SUD | Sudan |
| CHD | Chad | LBY | Libyan Arab Jamahiriya | SUR | Suriname |
| CHI | China | LCA | Saint Lucia | SVK | Slovakia |
| CHL | Chile | LEB | Lebanon | SVN | Slovenia |
| CMR | Cameroon | LES | Lesotho | SWA | Swaziland |
| COB | Congo | LIE | Liechtenstein | SWE | Sweden |
| COD | Dem. Rep. of Congo | LKA | Sri Lanka | SWI | Switzerland |
| COI | Comoros | LTU | Lithuania | SYR | Syrian Arab Rep. |
| COL | Colombia | LUX | Luxembourg | TAN | United Rep. of Tanzania |
| COS | Costa Rica | LVA | Latvia | THA | Thailand |
| CUB | Cuba | MAC | Macau | TJK | Tajikistan |
| CVI | Cape Verde | MAD | Madagascar | TKM | Turkmenistan |
| CYP | Cyprus | MAU | Mauritania | TMP | East Timor |
| CZE | Czech Rep. | MCD | FYR of Macedonia | TOG | Togo |
| DEN | Denmark | MCO | Monaco | TON | Tonga |
| DJB | Djibouti | MDA | Rep. of Moldova | TRT | Trinidad and Tobago |
| DMA | Dominica | MDV | Maldives (the) | TUN | Tunisia |
| DOM | Dominican Rep. | MEX | Mexico | TUR | Turkey |
| ECU | Ecuador | MLI | Mali | TUV | Tuvalu |
| EGU | Equatorial Guinea | MLS | Malaysia | UAE | United Arab Emirates |
| ERT | Eritrea | MLW | Malawi | UGA | Uganda |
| EST | Estonia | MNG | Mongolia | UKR | Ukraine |
| ETH | Ethiopia | MOR | Morocco | URU | Uruguay |
| FIJ | Fiji | MOZ | Mozambique | USA | United States |
| FIN | Finland | MTA | Malta | UZB | Uzbekistan |
| FPO | French Polynesia | MTS | Mauritius | VAN | Vanuatu |
| FRA | France | MYA | Myanmar | VCT | Saint Vincent & G. |
| GAB | Gabon | NAM | Namibia | VEN | Venezuela |
| GAM | Gambia | NEP | Nepal | WES | Samoa |
| GAZ | Gaza Strip | NET | Netherlands | WSA | Western Sahara |
| GBR | United Kingdom | NGR | Niger | YEM | Yemen |
| GEO | Georgia | NIC | Nicaragua | YUG | Serbia and Montenegro |
| GFR | Germany | NIG | Nigeria | ZAM | Zambia |
| GHA | Ghana | NOR | Norway | ZIM | Zimbabwe |
| | | VAR | Various | STA | Stateless |