

UNHCR PUBLIC HEALTH

2014 ANNUAL REGIONAL OVERVIEW

EAST, HORN & SOUTHERN AFRICA



PUBLIC HEALTH

REPRODUCTIVE
HEALTH & HIV

NUTRITION &
FOOD SECURITY

WATER
SANITATION
& HYGIENE

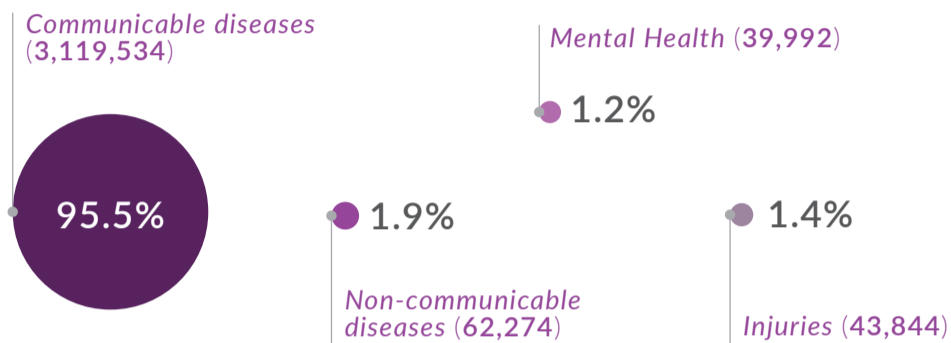
Public Health

2014 EAST, HORN AND SOUTHERN AFRICA

DISEASE PROFILE

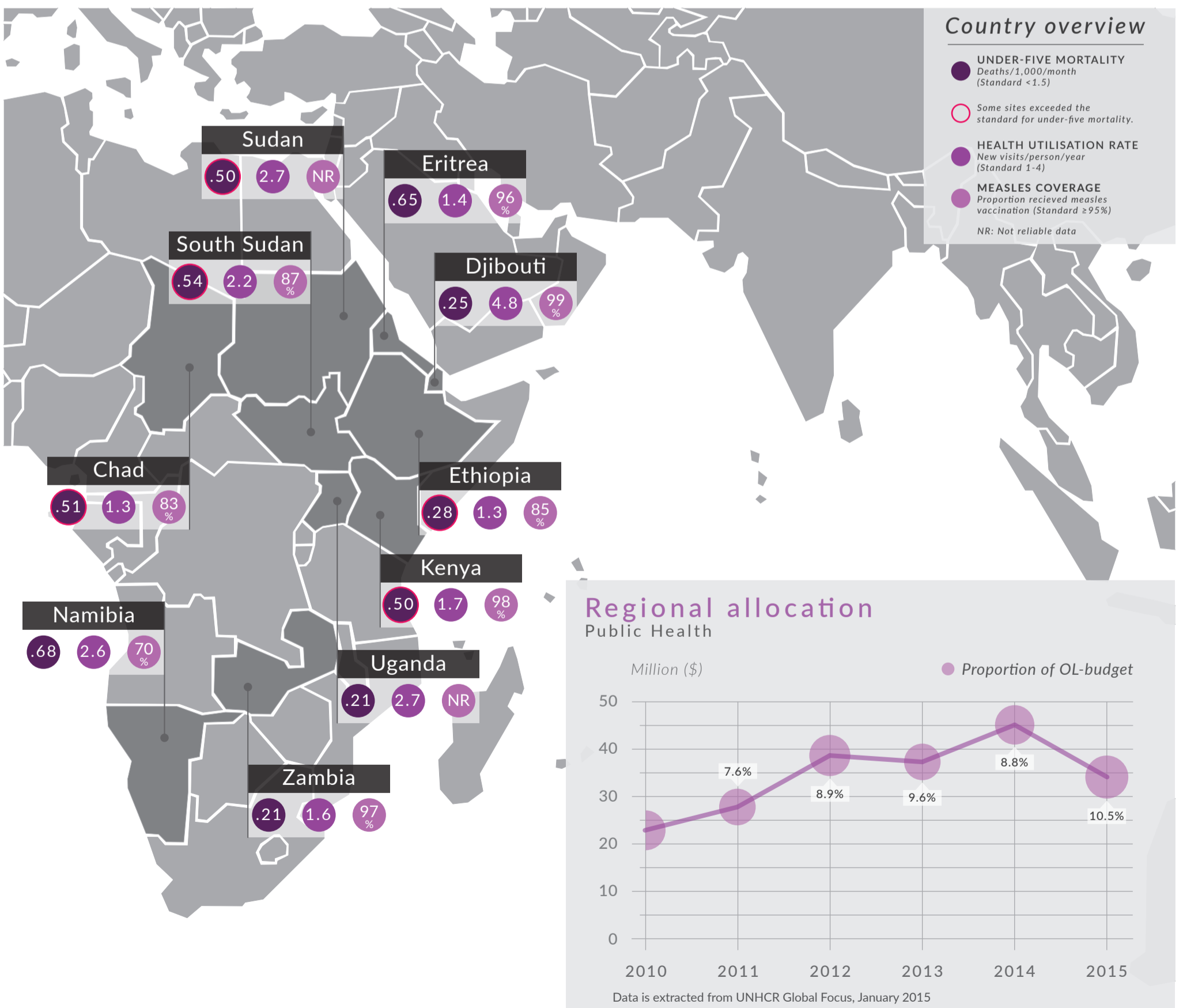
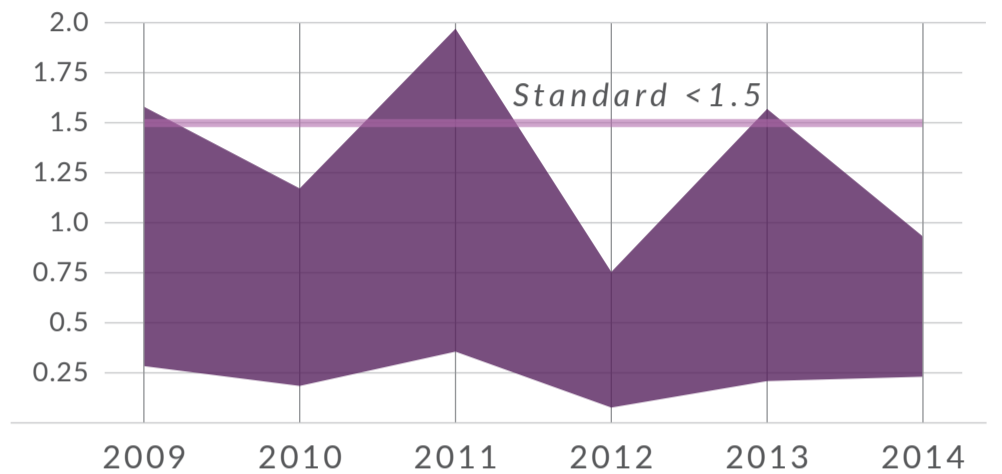
Proportion of all consultations

3,265,644 Total number of consultations in 10 countries
60% of global disease burden among surveyed refugees



UNDER-FIVE MORTALITY

Deaths/1,000/month (lowest-highest rates)

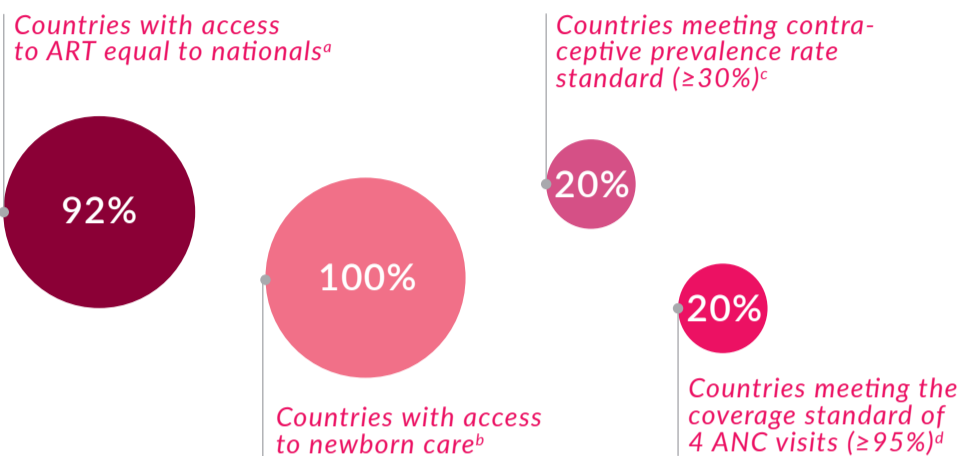


Reproductive Health & HIV

2014 EAST, HORN AND SOUTHERN AFRICA

REPRODUCTIVE HEALTH & HIV PROFILE

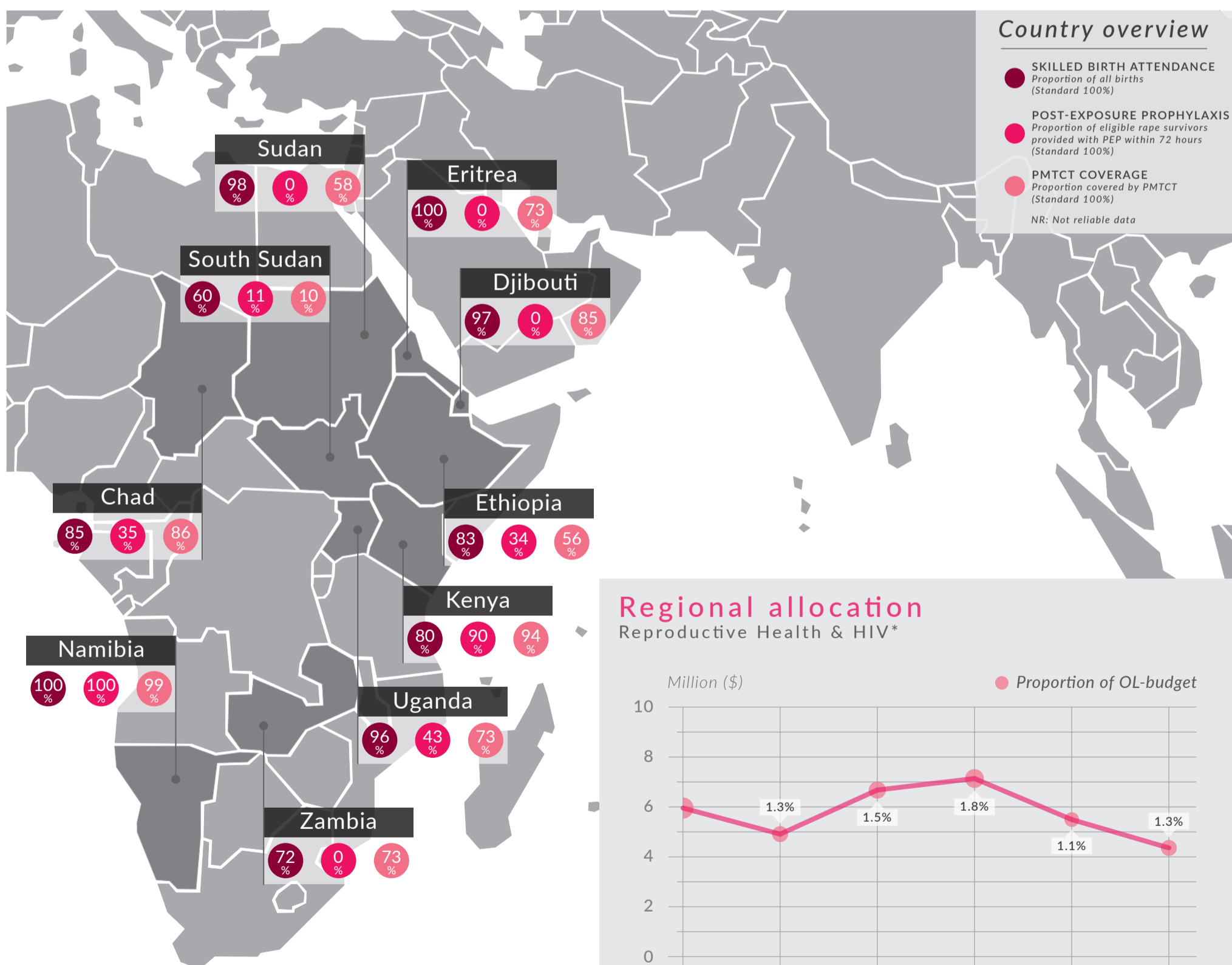
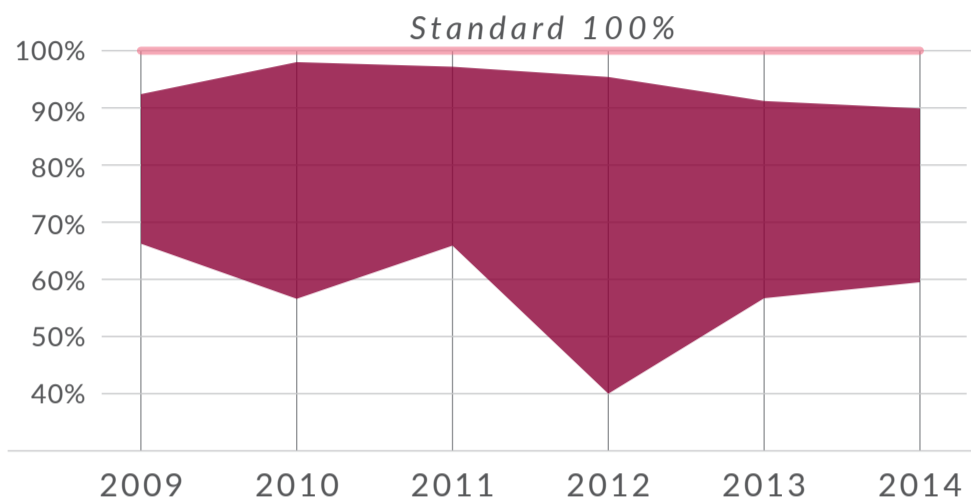
Proportion of countries



Number of countries included in analysis a) 13, b-d) 10

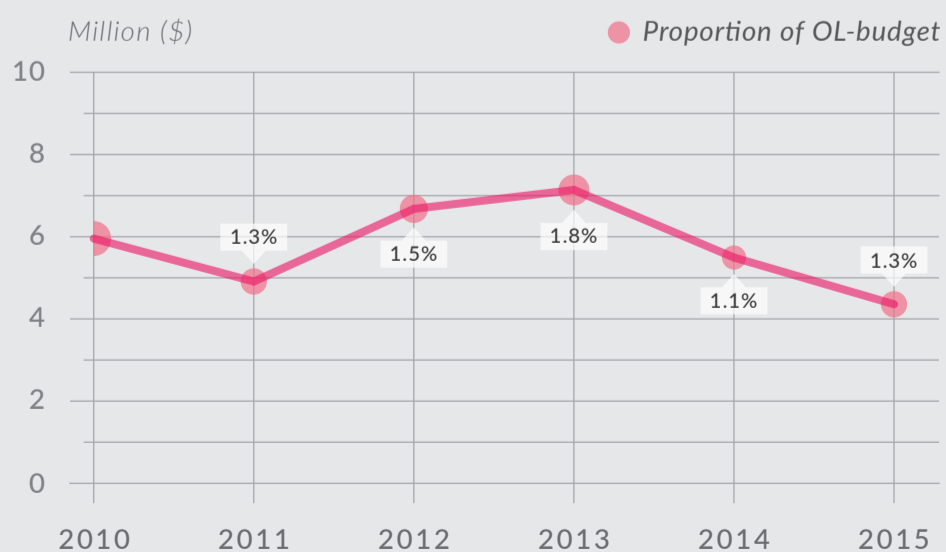
SKILLED BIRTH ATTENDANCE

Proportion of all births (lowest-highest proportions)



Regional allocation

Reproductive Health & HIV*



*A part of RH/HIV activities are included under the public health budget
Data is extracted from UNHCR Global Focus, January 2015

Nutrition & Food Security

2014 EAST, HORN AND SOUTHERN AFRICA

NUTRITION PROFILE

Proportion of surveyed sites

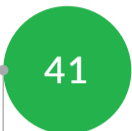
Sites meeting the GAM standard^a



Sites meeting the anaemia standard^c



Sites meeting the stunting standard^b

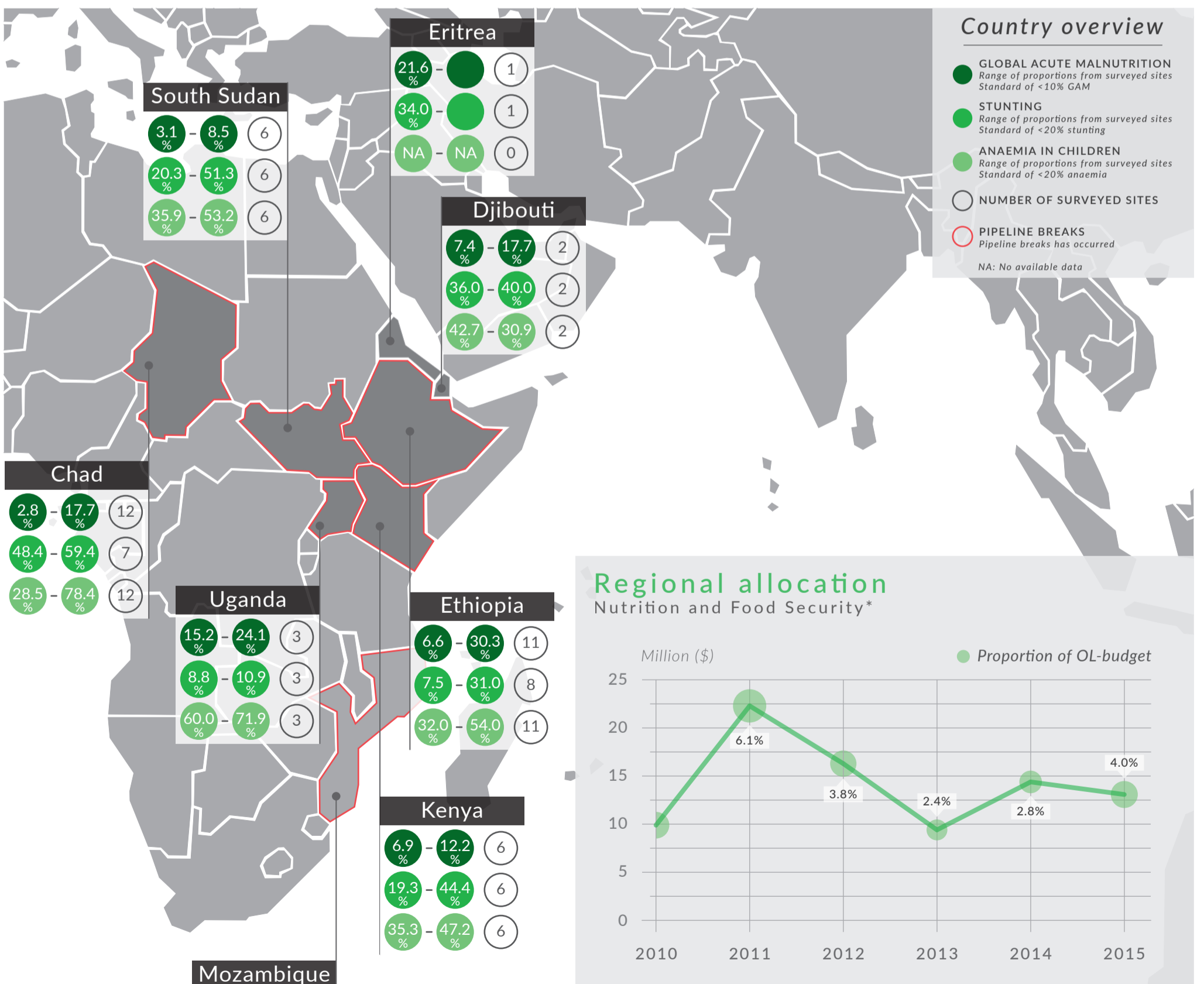
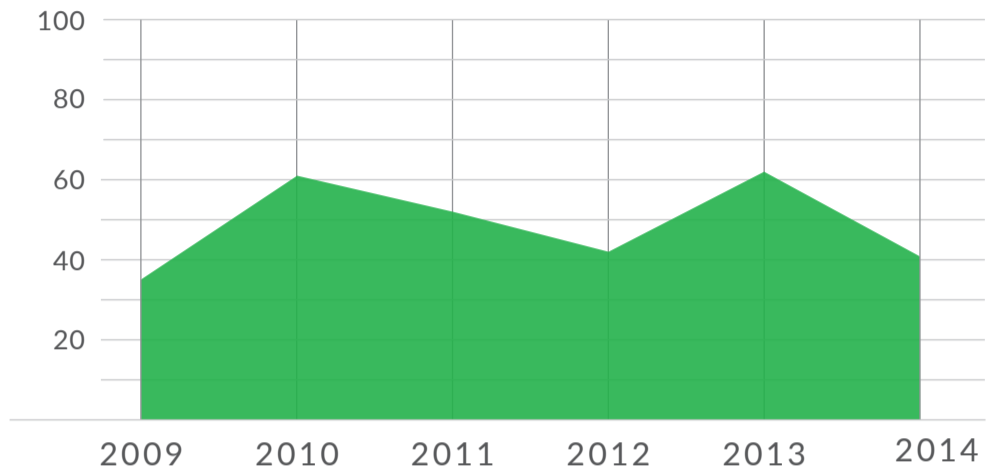


Number of sites with nutrition survey conducted

Number of sites included in analyses a) 41, b) 33, c) 40

NUTRITION SURVEY TRENDS

Number of sites with nutrition survey conducted

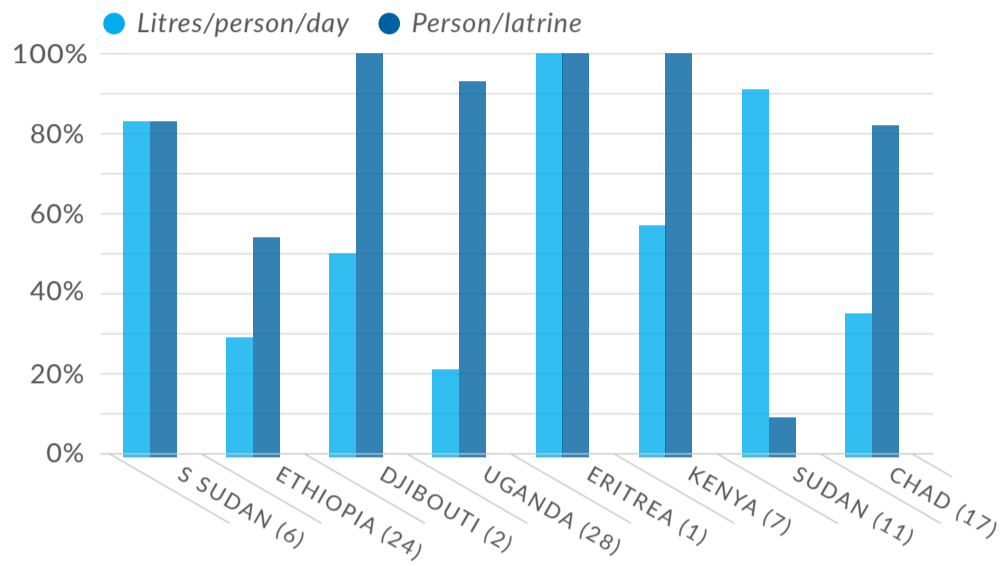


Water, Sanitation & Hygiene

2014 EAST, HORN AND SOUTHERN AFRICA

WASH PROFILE

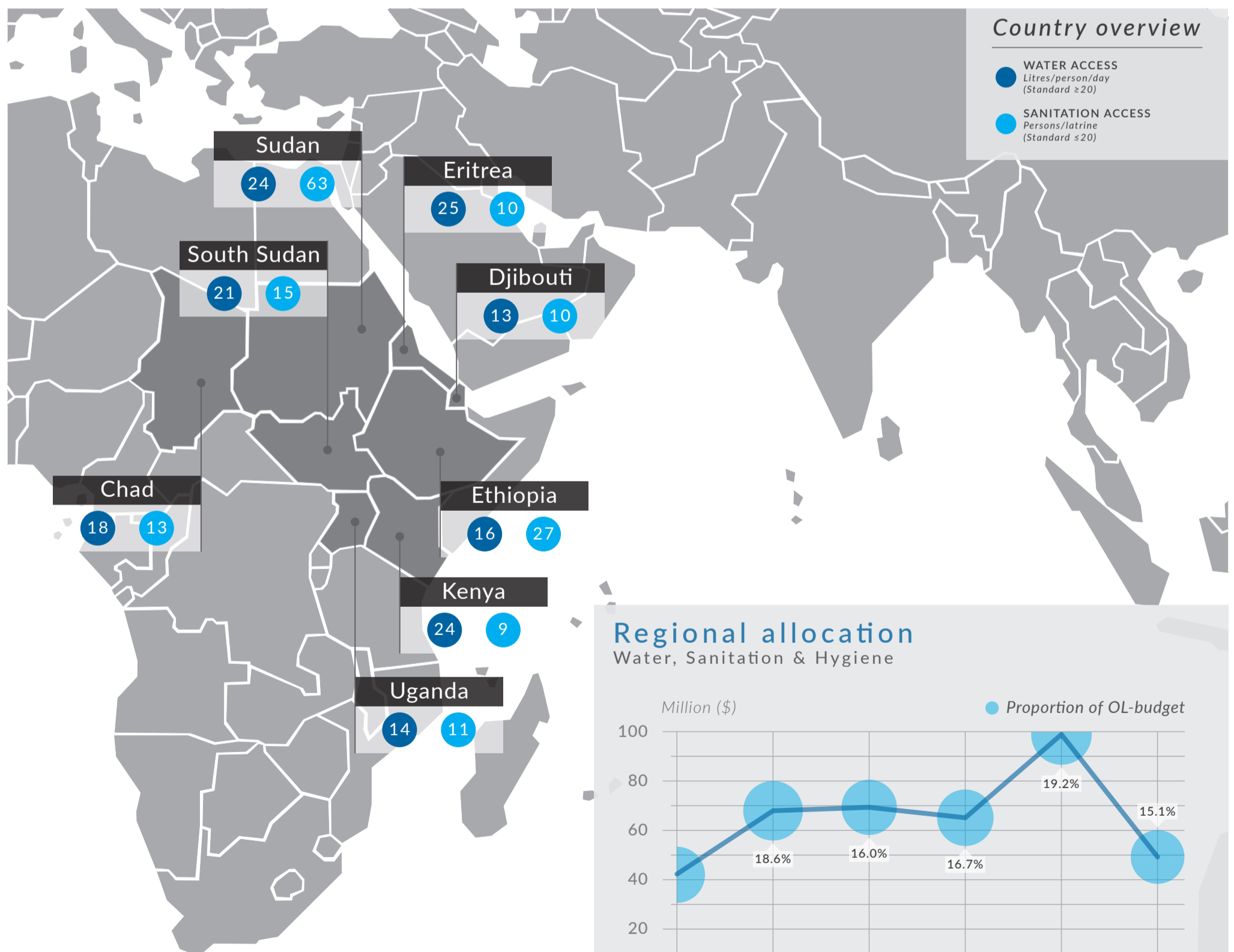
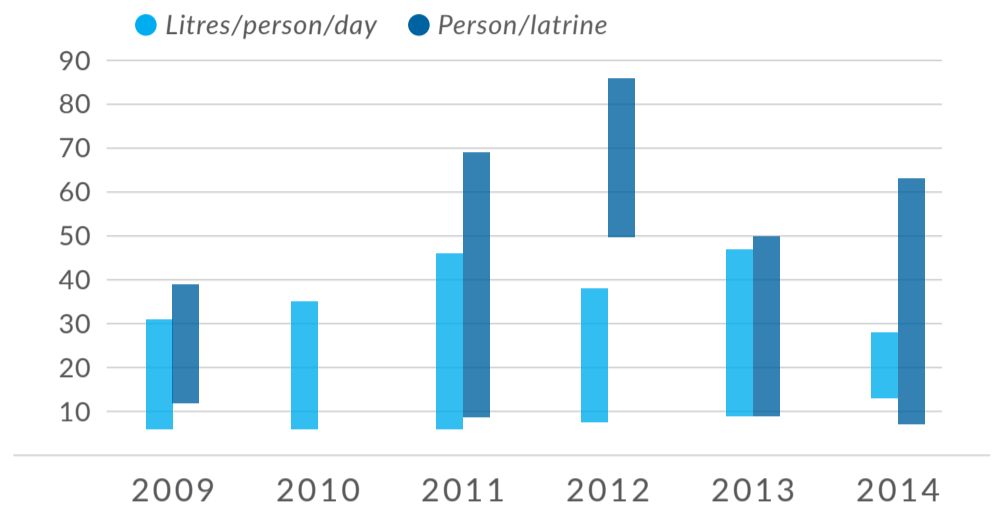
Proportion of sites meeting the standard



The figure in brackets represent the number of sites/settlements included in analysis

WATER & SANITATION TRENDS

Regional coverage (lowest-highest values)

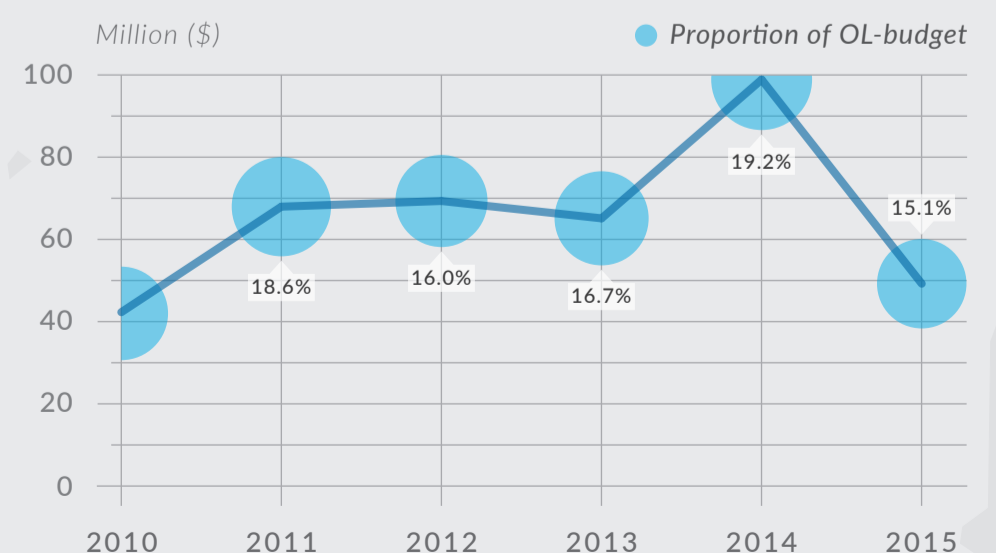


Country overview

- WATER ACCESS
Litres/person/day
(Standard ≥20)
- SANITATION ACCESS
Persons/latrine
(Standard ≤20)

Regional allocation

Water, Sanitation & Hygiene



Data is extracted from UNHCR Global Focus, January 2015



United Nations High Commissioner for Refugees
Public Health Section
Division of Programme Support and Management
Rue de Montbrillant 94
CH-1201 Geneva
Switzerland

T: +41 22 739 8433
F: +41 22 739 7344

E-mail: hqphn@unhcr.org
www.unhcr.org

Graphic design: Rasmus Wibæk Christensen, Copenhagen

The boundaries shown on the maps do not imply official endorsement or acceptance by the United Nations.

UNHCR © 2015