



**UNHCR**  
The UN Refugee Agency




# MYANMAR REFUGEE EMERGENCY RESPONSE IN BANGLADESH

**Supplementary Appeal**  
March - December 2018


## Illustrative map




## I. HIGHLIGHTS



**900,000**  
Estimated total refugee population as of February 2018



**1.3 million**  
People in need of humanitarian assistance in 2018



**80%**  
Of refugees are women and children



**UNHCR presence**  
220 national and international staff  
2 offices



## II. OVERVIEW

In the **fastest growing refugee exodus** that the world has witnessed in decades, some **671,000 refugees fled into Bangladesh from Myanmar's Rakhine State** in less than six months starting in August 2017.

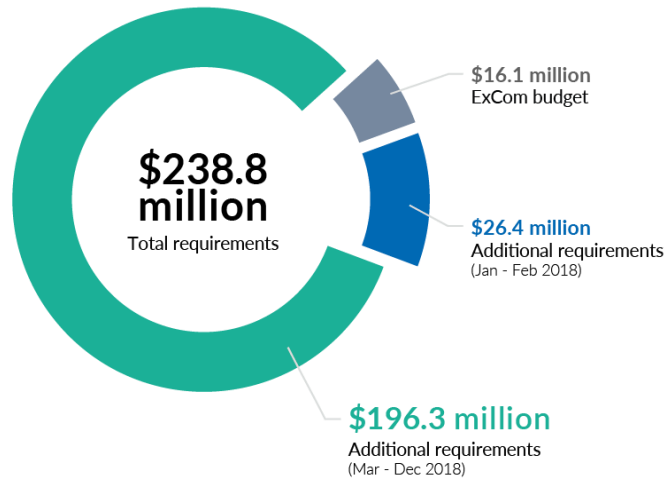
The new arrivals joined more than 200,000 refugees from Myanmar already in the country, mainly in the District of Cox's Bazaar, bringing the **total to approximately 900,000**.<sup>1</sup> With some 602,400 refugees in the Kutupalong-Balukhali site, it is now the largest refugee settlement in the world.

The "Rohingya refugee crisis", as it is commonly referred to, has now slowed as compared with the pace and magnitude of 2017. Refugees are, however, still arriving from Myanmar into Bangladesh, some **3,236 in February 2018 alone**.

More than **three quarters of the refugees are women and children**. Against a background of decades of discrimination and effective statelessness, they have **suffered severe violence, rape and psychological trauma** in security operations initiated in the northern part of Rakhine State following attacks on security posts by the Arakan Rohingya Salvation Army. In addition to the imbedded protection and psycho-social problems, refugees found themselves in conditions of severe crowding and squalor, and with shelter, food and nutrition, water, health, and sanitation conditions that stressed, to the very extreme, what were already stretched national and host community services and capacities.

Supported by several agencies including UNHCR, the Government of Bangladesh mounted a response to save lives, met the acute protection and humanitarian needs, and stabilized the overall situation. In October 2017, agency actors, 25 in total, launched the **Rohingya Refugee Crisis Response Plan** in which they sought \$434 million to support their interventions for the period of September 2017 to February 2018.<sup>2</sup>

Summary of financial requirements



<sup>1</sup> This figure comprises approximately 671,000 refugees who have arrived in Bangladesh from Myanmar since 25 August 2017 as well as more than 200,000 already in Cox's Bazar District who had fled in previous waves of displacement.

<sup>2</sup> [Humanitarian Response Plan: Rohingya Refugee Crisis, September 2017 – February 2018](#), available [here](#).

UNHCR declared an internal Level 3 Emergency—its highest level of alert—for the crisis and, drawing on the relevant components of the Response Plan, issued a [Supplementary Appeal](#)<sup>3</sup> in which it presented financial requirements of \$83.7 million.

The overall response has forged ahead since then and critical protection, shelter, water, sanitation, health, nutrition and other needs have been addressed. Extensive physical, structural, infrastructural and engineering works have been undertaken to organize settlements and establish access and other public service networks. **UNHCR has made its largest deployment of its organizational emergency response capacities**, and dramatically upped its coordination and operational footprint on the ground.

As the Governments of Bangladesh and Myanmar started to discuss and work out arrangements for the return of the refugees to Myanmar, UNHCR engaged with both to underscore the imperatives of any returns being voluntary, in safety and dignity, sustainable, and with international humanitarian presence and monitoring.

**Nevertheless, serious challenges remain.** Notably, the **looming monsoon season** has sparked new urgency both to avoid and prepare for the impact that the expected flooding and landslides will have on an estimated 150,000 refugees, even while continuing to consolidate the wider response.

The agency actors have thus followed the initial Response Plan with a **Joint Response Plan for the Rohingya Humanitarian Crisis** which was launched in Geneva on 16 March 2018, seeking \$950.8 million to cover their activities from March to December 2018.

In this **Supplementary Appeal**, UNHCR outlines its strategy, planning, operational and programmatic activities as part of that response, and for which the total financial requirement amounts to **\$238 million for 2018**.

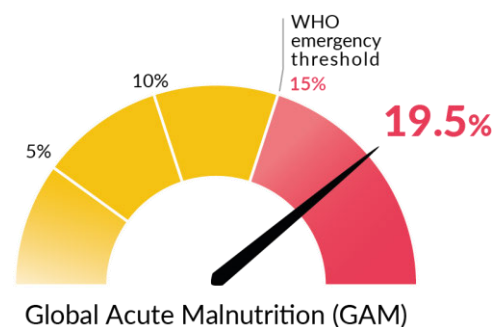
<sup>3</sup> [UNHCR's Supplementary Appeal - Myanmar Refugee Emergency Response In Bangladesh](#), available [here](#).

### III. RESPONSE

#### From August 2017 to February 2018

Under coordination arrangements which have evolved in a very exceptional and complex manner, **UNHCR has rallied its emergency and operational response capacities to support the Bangladesh Government** in responding to this extraordinary influx and its acute protection and other humanitarian indicators. Among others:

- 55 per cent of the refugees are under 18 years of age, many separated from family members.<sup>4</sup>
- 52 per cent of refugees are women, many of whom are single heads of households, elderly or people living with disability.<sup>5</sup>
- The Global Acute Malnutrition rate among the refugees is 19.5 per cent,<sup>6</sup> exceeding the WHO emergency threshold of 15 per cent.
- 31 per cent of the households have been identified as affected by at least one vulnerability and 16 per cent are headed by a single mother.
- Many of the new arrivals are visibly traumatized and disoriented from the experience of extreme violence, sexual abuse, the loss of family members, relatives and property and the ordeal of displacement and flight they have endured.
- Refugee settlements are densely overcrowded and basic services stretched to the limit.
- With the monsoon season fast approaching, some 150,000 refugees are vulnerable to landslides and flooding.
- The Kutupalong-Balukhali site now hosts approximately 602,400 refugees, equivalent to the population of a medium-sized city. However, it possesses almost none of the critical infrastructure—including health, education, water, sanitation and security services—that would be necessary to sustain a setting of this scope.
- Problems of law and order and/or tensions within refugee groups or with the host community remained a concern, as a result of overcrowding, competing demands for limited resources and increased anxiety from the monsoon rains.



**UNHCR's response strove to ensure that the lives and basic rights of refugees were safeguarded** and the operational setting was organized and stabilized in the most essential and

<sup>4</sup> 1 per cent of households have at least one unaccompanied child, and 2 per cent have at least one separated child.

<sup>5</sup> 16 per cent of households have a single mother. 4 per cent of households have an older person at risk; 4 per cent have a person with disability; and 5 per cent have a person with serious medical conditions.

<sup>6</sup> According to a health and nutrition assessment conducted in November 2017.

effective way possible. UNHCR worked pursuant to its mandated responsibilities and also in close partnership and coordination with the other agencies, particularly the International Organization for Migration (IOM). In particular:

- UNHCR collaborated with the Government of Bangladesh to create **a consolidated refugee data management system** that brought together the results of a registration exercise, which was carried out initially by the Government, and the results from a **family counting exercise**, which was jointly undertaken in a later stage by UNHCR and the Government's Refugee Relief and Repatriation Commissioner (RRRC), to collect household-level information, including gender, age disaggregation, protection needs and location, of the entire refugee population.
- The unified data facilitates the **evidence-based case management** at both the individual and collective levels, the out-reach to families to ensure appropriate support and follow-up, and the improvement of protection and delivery of assistance to the refugees. For instance, information on the location of people, which was juxtaposed to data, in areas likely to be affected by the upcoming monsoon season helped to enable better preparedness. The unified system is underpinned by a Memorandum of Understanding on data sharing between UNHCR and the Government of Bangladesh which stipulates that any use of information for purposes other than assistance and identification or transfer to third parties has to be approved by UNHCR.
- UNHCR has engaged closely with **survivors of sexual and gender based violence (SGBV)**, including some 270 who directly sought assistance from UNHCR and its partners, and referred the cases for appropriate follow-up. The vast majority of them (73 per cent) involved physical assault while more than 22 per cent involved other forms of sexual violence. By the end of January 2018, UNHCR had also registered 5,527 child-headed families and 5,575 families with unaccompanied and separated children and referred them for follow-up.
- **A unified referral system** has been launched in which individuals with protection needs are identified and referred to specialised service providers in different locations in a manner that ensures a coherent, more efficient and effective case management. Ten women-friendly spaces have also been created to provide a safe space for them to share their concerns and needs, as well as to promote women's leadership and community engagement. Twenty-six functioning **child friendly spaces (CFSs)** have been established, which offer a space to play and learn for 10,000 boys and girls. More than 6,500 children have benefited from **psychosocial support** through structured play and other activities at the CFSs. These quality child protection services, combined with community-based protection, have contributed to addressing the needs of children at risk.
- To engage the refugees themselves as agents of their own protection, **a Community Outreach Programme** has been launched in which refugees are empowered as first responders to support their peers. From an initial group of 30 individuals covering one area of Kutupalong, there are now 279 individuals covering eight areas of the settlement. The refugees, who have been selected based on their willingness to help others, have conducted a total of 2,200 **home visits** and more than 1,400 **information sessions**. Overall, the Community Outreach Members (COMs) identified some 1,900 cases in need of support. They

also provided direct assistance and support to more than 760 refugees and referred over 410 people to UNHCR's partners Technical Assistance Inc. and the Bangladesh Rural Advancement Committee. The COMs have been playing an important role in the communities where refugees better understand and access rights and services in safety and dignity, and build resilience.

- In September 2017, UNHCR started **airlifts to deliver much needed aid**. In four months, some 17 airlifts delivered essential core relief items (CRIs): over 61,200 newly arrived refugee families were provided with kits containing sleeping mats, mosquito nets, tarpaulins and solar lamps. Refugees were also provided with shelter kits to build their houses. During the winter months of December 2017 and January 2018, UNHCR and partners distributed 185,000 winter shawls and sweaters to help refugees stay warm. UNHCR also started cash distribution in Kutupalong to assist initially 13,000 families with one-off cash grants.
- UNHCR has closely collaborated with the authorities, partners, and communities to **improve the protection standards** in Kutupalong and Nayapara settlements and to plan new site areas. Efforts have focused on identifying new areas for refugees to set up their homes and ensuring that services were in place in advance. UNHCR also funded the **development of a six-kilometre road to connect the north to the south of Kutupalong**, which was implemented by the RRRC and the Bangladesh Armed Forces. Completed on 12 December 2017, it now constitutes Kutupalong's main lifeline, allowing all actors access to the settlement, the delivery of aid and facilitating movement for refugees within the site. Other site improvement works include the preparation of 20,345 m<sup>2</sup> of land for communal facilities and the construction of some 6,821 steps, 12.3 km of pathways and 1.35 km of bridges.
- UNHCR and partners have already conducted **mass immunization campaigns** for refugees and host communities in Ukhia and Teknaf Upazilas in the District of Cox's Bazar, which included vaccinations against measles, rubella, cholera and polio. After two rounds of diphtheria mass immunization campaigns conducted in December 2017, a third round is scheduled before the end of March 2018.
- As part of its protection advocacy efforts, UNHCR has aimed to achieve **certified and accredited education for refugees and to increase quality service provision for local students**. To date, UNHCR has constructed some 168 classrooms in the various areas of the settlements. Some 14,027 children are enrolled in primary education in Nayapara and Kutupalong registered camps and in temporary learning centres in the settlements' extensions where UNHCR operates. An additional 569 children are enrolled in junior secondary education. The provision of these learning opportunities for children has enhanced the level of child protection.
- Kutupalong and Nayapara have now grown into what might be considered as *de-facto* cities with, among other services, 16 health units; 18 outpatient therapeutic centres; one stabilisation centre for **treatment of malnourished children**; 15 information points; over 4,700 latrines; and more than 950 tube wells, supported by UNHCR and partners. The Macro Settlement Development for Kutupalong, developed by UNHCR together with the RRRC and the IOM continues to improve access to assistance and services by refugees and to allow all actors of

the overall response in Kutupalong to identify gaps and/or address any potential duplication of service provision. UNHCR's Refugee Assistance Information System (RAIS), an online platform for distribution and monitoring of assistance, is now available with comprehensive information on the refugee population. UNHCR and its partners will update specific protection needs in the system pursuant to follow-up on individual cases and protection monitoring. Additionally, RAIS is being used as a verification tool at distribution sites.

- The emergency has presented both the imperative and the opportunity to **reinforce national systems** where needs are identified by the authorities. UNHCR thus continues to support medical and health care facilities in refugee hosting areas with logistical support, equipment and other immediate needs such as ambulances, hospital tents, medicines and medical supplies, resources, and training.
- In order to **minimise the impact of the humanitarian response on the environment** and mitigate protection risks linked to firewood collection, in early December 2017 UNHCR started to distribute eco-friendly cooking fuel sourced from local suppliers. Together with FAO, IOM and WFP, UNHCR is further planning **a pilot liquid petroleum gas initiative** to—pending the Government's approval—provide a safe fuel alternative for refugees. UNHCR is also in the process of setting up solar street lights in refugee settlements and surrounding highways. The latter will benefit both refugees and host communities. UNHCR will further explore possibilities for **Quick Impact Projects with host communities**, which have generously hosted refugees.
- Around 20 **solar street lights** are being installed by UNHCR in Foliapara village, which has a population of 10,600 people and is located on the outskirts of Kutupalong refugee settlement. The solar street lights are being installed in public places, including near schools and mosques, to benefit the local community. This forms part of a total of 270 solar street lights provided by UNHCR that are being installed in areas of Kutupalong, Nayapara host community and extension site and the Transit Centre.

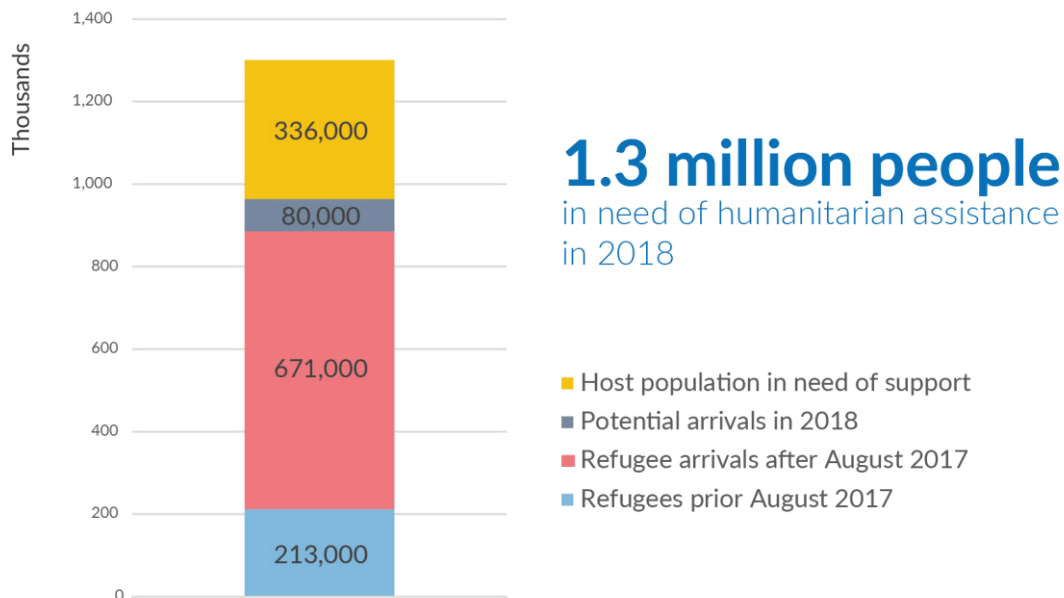


## From March to December 2018

As outlined in this Supplementary Appeal, UNHCR's objective is to continue working closely and coordinating with the Government of Bangladesh and all partners to enhance the protection of the refugees, consolidate the most effective delivery of services and outcomes for them, and step up emergency preparedness and disaster risk reduction to minimise the risks and potential loss of life, what is referred to as "an emergency within an emergency". At the same time, the response will be increasingly geared towards medium to long-term perspectives as far as feasible, particularly to empower refugees and support their resilience. In tandem, UNHCR will increase support to host communities and strengthen its partnership with national authorities to reinforce key national services strained as a result of the refugee influx including by catalysing development actors.

### Planning assumptions

In line with the scenarios on the basis of which the Joint Response Plan has been elaborated, UNHCR's plans and activities to the end of 2018 are based on a total of 1.3 million people who will be in need of humanitarian assistance. This includes approximately 900,000 refugees in Cox's Bazar; an estimated 80,000 additional refugees who may arrive in Bangladesh during the course of 2018; and some 336,000<sup>7</sup> people in the host community.



A key planning assumption is that the influx from Myanmar will continue through the end of 2018 although not on the same scale and pace as in 2017. In this context, congested, fragile and marginal

<sup>7</sup> Approximately 500,000 Bangladeshis live in Ukhia and Teknaf Upazilas in the south of Cox's Bazar District; 336,000 of them live in the seven Unions most densely populated with refugees.

conditions and the risk of epidemic outbreaks will continue in the settlements. The monsoons will compound and aggravate this situation. Emergency response will thus remain a vital feature of the response, made even more compelling by the monsoon season.

The Government's policy will remain essentially the same: people seeking safety in Bangladesh from Myanmar will continue to be permitted to enter and remain in the country. Security and safety will continue to be provided by the State. The language and focus on repatriation will continue. The Government of Bangladesh is expected to continue to support the principle that any return will be voluntary. On the other hand, the emphasis on return as the decisive, if not exclusive solution for the crisis may impact the degree to which protection, self-reliance or inclusivity imperatives and opportunities can be taken advantage of, optimized or maximized.

### Priority objectives

Addressing core protection vulnerabilities and extending life-saving support will thus be sustained and stepped up. Mitigating the risks of landslides and floods, including by pre-positioning relief items, machinery and equipment as well as strengthening shelters, bridges, and essential infrastructure have to be prioritized. Another key priority will be to build retaining walls for soil stabilization and drainage networks, and relocating refugees from the most vulnerable areas.

The response as a whole will also continue to be stabilized and consolidated as durably as possible. The situation of the host communities will be taken into account in an integrated manner. The response must already reflect solutions beyond the immediate emergency by strengthening the resilience and self-reliance of refugees and preparing the refugees for durable solutions.

The right of the refugees to return to their country of origin with full identity and rights as citizens will remain fundamental. At the same time, a core protection accountability is to ensure that any return of the refugees takes place only voluntarily and in conditions of safety, dignity and sustainability. UNHCR's activities will focus on the relevant questions and aspects within Bangladesh and also pay attention to the interfacing bilateral and even regional dimensions.

The Government of Bangladesh and its people have exhibited exceptional generosity by keeping their borders open to refugees fleeing violence, hosting them in their villages and homes, and sharing their resources. International support must be stepped up to complement the efforts made by the Government of Bangladesh and its people. Longer-term support will also be required to help the Government reinforce the local infrastructure and economy, and to ensure access to opportunities for refugees and the communities hosting them. UNHCR will work towards catalysing and advocating for such support.

Faced with what is manifestly a refugee emergency with striking and complex protection, assistance, solutions, bilateral, regional and global features, UNHCR will continue to work closely, in particular with

the Government of Bangladesh and all partners, to fully deliver its mandate for the most effective protection and solutions-oriented response.

The objectives which will continue to guide and underpin UNHCR's response can thus be summed up as follows:

**I. Saving lives and providing core protection**

UNHCR will work with the Government and partners to assure the continued admission of Myanmar nationals fleeing for their safety into Bangladesh; improve living conditions and access to services in the refugee settlements; and respond effectively to the monsoons and their impacts.

**II. Providing an overall protective environment**

UNHCR will work with the Government and other partners to strengthen the protective environment for refugees and for them to enjoy their basic human and protection rights.

**III. Right to identity and documentation**

UNHCR will work with the Government and other partners to secure the right of Rohingya refugees, most of whom arrived stateless, to a legal identity and will accordingly prioritize the registration of all refugees and the issuance to them of appropriate documentation.

**IV. Refugee and community participation**

The voice, participation and decision-making of the refugees and the host community in matters affecting or impacting them shall be sought and fostered in the most feasible manner possible.

**V. Community-based approach**

UNHCR's response will, as far as possible, be delivered on a community-based approach. UNHCR will work together with partners to support the authorities in establishing a robust system of civil administration in refugee settlements, while increasing support to host communities and local structures.

**VI. Resilience and solutions**

UNHCR will engage with both the refugees' country of origin and the country of asylum, together with partners, to promote the necessary conditions for voluntary repatriation in line with international standards. It will pursue all steps to empower refugees towards self-sufficiency, take control of their fate and live a safe and dignified existence.

## Main intervention areas



### Protection

UNHCR interventions, in coordination with partners, will aim to ensure the safe access of refugees to the territory of Bangladesh, the prevention of *refoulement*, respect of refugees' rights and favourable protection environment through community engagement. UNHCR will:

- Ensure access to territory and improve reception conditions through protection monitoring, including at border areas, as well as providing access to legal assistance and legal remedies.
  - Establish an identity management system for the refugee population in Bangladesh, through registration and documentation.
  - Strengthen identification, referral and services for people with specific needs, including those in the host community.
  - Promote a community-based approach for protection services to people at heightened risk through meaningful engagement with all refugee and host community groups, community mobilisation systems and the establishment of safe community spaces. UNHCR will encourage community outreach workers and members from both the refugee and host communities to engage in these activities.
  - Improve access to quality child protection services through case management, which also delivers services to unaccompanied and separated children, as well as providing child friendly spaces and community-based child protection structures.
  - Provide SGBV survivors and individuals at specific risk of SGBV (unaccompanied and separated children, single women, women heads of households and persons with disabilities) with effective case management and referral to appropriate services, including legal, medical, psychosocial support and security, as needed and wished, according to the survivor centred approach.
  - Ensure any returns to the country of origin are well-informed, safe, voluntary and dignified. Advocate for the clear inclusion of international standards into bilateral and tripartite agreements on repatriation.
  - Mainstream protection in all sectors.
- Implement quick impact projects of a multi-sectoral nature to support host communities, including the improvement of infrastructure and interventions that stimulate the local economy.



### Shelter and core relief items (CRIs)

UNHCR will continue to provide lifesaving shelter and CRIs, improve living conditions, social cohesion and enhance the resilience to new arrivals, refugee settlements and host communities. UNHCR will:

- Procure the required CRIs in anticipation of the expected new arrivals and pre-positioned contingency stock of CRIs and emergency shelter kits (Phase 1) as part of the emergency preparedness and distribute when required in a timely manner.
- Complete the upgrade to temporary shelter assistance (Phase 2), including the provision of all essential items as per the sector's guidelines.
- Build in-situ permanent shelter assistance prototypes (Phase 3) before the rainy season to test their structural stability and cultural appropriateness.
- Pilot cash-based interventions in Kutupalong for CRIs, shelter and energy for food, through the provision of liquid petroleum gas.



### Health

UNHCR will provide integrated primary health services for men, women and children in line with the essential package of health services recommended by the Government. UNHCR will:

- Provide access to primary health care services, including sexual and reproductive health, through construction and maintenance of 25 health facilities (primary health centres and health posts).
- Expand the existing referral system to support access to emergency services, secondary and tertiary level care.
- Improve quality of services through capacity building and strengthened coordination between all partners through relevant training as well as improving the linkages to supportive services for the benefit of both the host community and refugee population, especially for the extremely vulnerable.
- Support to the host communities through capacity building at five Ministry of Health hospitals in order to meet the increased health needs.





### Nutrition

**UNHCR and its partners will seek to meet the nutritional needs identified through the needs assessment and address undernutrition among vulnerable populations. UNHCR will:**

- Treat acutely malnourished children by conducting community-based screening, detection and the referral of children aged 6-59 months to nutrition centres.
- Prevent malnutrition through the implementation of adequate feeding programs for the treatment of children suffering from severe and moderate acute malnourishment, awareness raising sessions, and group counselling.
- Conduct an integrated nutrition survey based on guidelines to strengthen nutrition emergency response planning, implementation and monitoring.



### Education

**UNHCR will aim to provide technical support and advocacy in the education sector through the strategic advocacy group and technical working group, and to assume responsibility for ensuring quality safe learning opportunities for 120,000 children. UNHCR will:**

- Provide quality primary education through well-equipped learning centres in multiple shifts and through mobile teaching methods.
- Improve the learning environment in host community schools through construction activities and procurement of equipment.
- Train all newly recruited refugee and host community teachers to provide standardized education.
- Establish community initiatives to address social cohesion, community-based protection and safe learning environments.
- Enhance youth engagement, including in the host community, through existing community technology access.



### Water, sanitation and hygiene (WASH)

**UNHCR will focus on the replacement and/or improvement of WASH facilities; reduce the transmission of disease; and provide dignified access to WASH services, while also preparing for, and taking concrete actions to mitigate, the impacts of the monsoon season. UNHCR will:**

- Address the current low quality of sanitation infrastructure with improved semi-permanent latrines with larger pit volumes, scaling-up desludging and finding safer ways to treat faecal sludge.
- Improve water quality at source and households by improving existing water points or installing piped networks that allow for centralized treatment.
- Scale-up hygiene promotion activities.
- Share services with host communities, such as providing access to the water reservoir, enhancing the water network in Nayapara as well as improving water and sanitation in schools.



### Site management

**UNHCR will strengthen and improve a wide range of site management components to enhance the equitable access of refugees to services and to reduce protection risks through community participation. It will take into account the vulnerability of the settlements to natural hazards, the surrounding environment and natural resources. UNHCR will:**

- Conduct a series of training and capacity-building activities to expand and reinforce the skills of stakeholders, government and local authorities; ensuring adequate management of the settlements, including disaster response and risk reduction mechanisms.
- Provide support to the authorities, including the RRRC and Camp-in-Charge (CiC) with equipment, staffing, logistics and assistance in establishing local level CiC offices.
- Jointly with WFP and IOM, lead in the implementation of the site mitigation engineering project in preparation for the monsoon season. The works will focus on strengthening basic infrastructure, such as drainage and vehicular access, and pre-positioning of materials to facilitate rapid emergency response in the refugee settlements and host communities.
- Focus on three primary areas of infrastructure intervention: drainage, access and stabilisation. These works, coupled with other activities, will reduce vulnerability to natural hazards. Maintenance and ad-hoc repairs to existing infrastructure will continue during and after the monsoon season.
- Support informed humanitarian decision-making by providing a site profiling package and multi-sectoral need assessments.



### Coordination

UNHCR will support the inter-sector coordination for the implementation of joint response activities. UNHCR will:

- Provide resources for the functions of the Inter-Sector Coordination Group (ISCG).
- Ensure effective refugee/humanitarian responses through strengthened inter-sector coordination at strategic and operational levels.
- Ensure effective advocacy and resource mobilization in support of the collective humanitarian response, including national and local partners.
- Lead and coordinate the protection sector, and mainstream protection in all sectors.

### Accountability, partnership and coordination

Notwithstanding the exceptional, complex and challenging coordination arrangements which have been instituted for the response to the Rohingya refugee emergency in Bangladesh, UNHCR's engagement is based on close collaboration with the Government at all levels. Collaboration and engagement with the Ministry of Foreign Affairs—as the chair of the National Task Force on the Implementation of the National Strategy on Myanmar Refugees and Undocumented Myanmar Nationals—ensures direct advocacy with the Government of Bangladesh on mitigating the protection risks and supporting the delivery of assistance.

Additionally, UNHCR continues to strengthen its partnership with governmental operational partners, including the Ministry of Disaster Management and Relief and the RRRC, on camp management and coordination, as well as community governance within the camps. Partnership with the Ministry of Home Affairs has also been strengthened on enhancing the quality of refugee data, while closer collaboration with the Ministry of Health and Family Welfare, Ministry of Education, and Ministry of Social Welfare continues in order to ensure a streamlined response within the set national structures. UNHCR is also pursuing partnerships with other line ministries and entities for a holistic and multidimensional response to the needs of the refugees and the host communities.

UNHCR is an active co-chair of the Strategic Executive Group (SEG) with the UN Resident Coordinator and IOM at the Dhaka level. The SEG leads the refugee response and advocates to the highest level of the Government of Bangladesh and Dhaka-based donor community. In Cox's Bazar, UNHCR has seconded a Senior Coordinator to lead the response through the ISCG as well as the Head of Sub Office Group, which comprises heads of agencies based in Cox's Bazar. Furthermore, UNHCR leads the Protection Working Group and co-chairs the Gender in Humanitarian Action Working Group. UNHCR also works closely with the Child Protection and GBV Sub-Sectors within the Protection Working Group. In addition, UNHCR focuses on mainstreaming gender and protection in all sectors.

UNHCR is also expanding its partnerships with national NGOs and development actors, in addition to international partners, in order to better address the needs and concerns of host communities, and engage in a meaningful dialogue with both refugee and host community members. Working with civil society, in close coordination with the national authorities, remains a priority for UNHCR in order to deliver a comprehensive response to this emergency.

#### IV. FINANCIAL REQUIREMENTS

The additional financial requirements for UNHCR's activities outlined in this Supplementary Appeal amount to **\$196 million for March to December 2018**. Together with the financial requirements of the previous Supplementary Appeal, which amounted to \$26 million (covering the period from January 2017 to February 2018) and the ExCom-approved budget of \$16 million for UNHCR's Bangladesh Country Operation for 2018, the **total requirements come to \$238 million** as summarized in the table below.

**Those activities set out are highly prioritized requirements.** UNHCR urges **contributions to be made towards addressing these requirements in an ample and timely manner** to the best extent possible. **UNHCR further calls for the contributions to be made in the most flexible manner**, i.e. that they are unearmarked or only broadly earmarked. This funding is required to address urgent needs. Contributions which are tightly earmarked, or contributions which arrive late, will severely constrain UNHCR's contingency preparedness, planning and response and support to the Bangladesh authorities, other partners and, most of all, the people of concern whose safety and well-being will be placed in peril.

For instance, profiling, data collection and registration activities will not be developed, inhibiting the identification of people in need of protection, with specific vulnerabilities and evidence-based advocacy on their behalf. UNHCR will not be able to: establish or reinforce its presence in key areas, particularly border locations stemming thereby border and protection monitoring and meaningful interventions to prevent potential instances of *refoulement*, facilitate access to territory and crucial asylum and other international protection processes; and address other protection risks.

Among these, SGBV prevention and response will not be supported, thus an increasing number of women will be more exposed to gender based violence, sexual exploitation and trafficking. Vulnerable people—including children and youth without legal status and women at risk of SGBV—will not receive essential assistance and will be forced into precarious survival mechanisms. A community-based approach will not be implemented, limiting socio-economic inclusion and livelihoods thus feeding discrimination and xenophobic sentiments. A situation which is already critical could degenerate even further into a broader regional protection and humanitarian crisis.

	Myanmar situation			
	ExCom Budget and subsequent adjustments related to the Myanmar situation	Additional requirements		Total
		Jan–Feb 2018	Mar–Dec 2018	
<b>Favourable protection environment</b> <i>Access to legal assistance and legal remedies improved</i> <i>Access to the territory improved and risk of refoulement reduced</i> <i>Administrative institutions and practice developed or strengthened</i> <i>International and regional instruments acceded to, ratified or strengthened</i> <i>Law and policy developed or strengthened</i> <i>Public attitude towards persons of concern improved</i>	2,042,166	723,431	535,291	3,300,889
<b>Fair protection processes and documentation</b> <i>Access to and quality of status determination procedures improved</i> <i>Civil registration and civil status documentation strengthened</i> <i>Family re-unification achieved</i> <i>Identification of statelessness improved</i> <i>Level of individual documentation increased</i> <i>Quality of registration and profiling improved or maintained</i> <i>Reception conditions improved</i>	324,583	103,347	2,830,570	3,258,500
<b>Security from violence and exploitation</b> <i>Protection from crime strengthened</i> <i>Protection from effects of armed conflict strengthened</i> <i>Protection of children strengthened</i> <i>Risk of SGBV is reduced and quality of response improved</i> <i>Risks related to detention reduced and freedom of movement increased</i>	8,454,711	1,085,146	13,372,062	15,087,022
<b>Basic needs and essential services</b> <i>Food security improved</i> <i>Health status of the population improved</i> <i>Nutritional well-being improved</i> <i>Population has optimal access to education</i> <i>Population has optimal access to reproductive health and HIV services</i> <i>Population has sufficient access to energy</i> <i>Population has sufficient basic and domestic items</i> <i>Population lives in satisfactory conditions of sanitation and hygiene</i> <i>Services for persons with specific needs strengthened</i> <i>Shelter and infrastructure established, improved and maintained</i> <i>Supply of potable water increased or maintained</i>	629,814	13,178,845	109,416,264	131,049,819
<b>Community empowerment and self-reliance</b> <i>Community mobilization strengthened and expanded</i> <i>Natural resources and shared environment better protected</i> <i>Peaceful co-existence with local communities promoted</i> <i>Self-reliance and livelihoods improved</i>	1,275,639	4,237,238	14,760,330	20,273,207
<b>Durable solutions</b> <i>Comprehensive solutions strategy developed, strengthened or updated</i> <i>Greater reduction of statelessness is achieved</i> <i>Potential for integration realized</i> <i>Potential for resettlement realized</i> <i>Potential for voluntary return realized</i> <i>Reintegration made more sustainable</i>	-	-	1,165,791	1,165,791
<b>Leadership, coordination and partnerships</b> <i>Camp management and coordination refined and improved</i> <i>Coordination and partnerships strengthened</i> <i>Donor relations and resource mobilization strengthened</i> <i>Emergency management strengthened</i>	297,451	2,376,987	32,639,766	35,314,204
<b>Logistics and operations support</b> <i>Logistics and supply optimized to serve operational needs</i> <i>Operations management, coordination and support strengthened and optimized</i>	1,366,643	2,995,004	6,631,732	10,993,379
<b>HQ and regional support</b>	1,731,432	-	2,119,508	3,850,940
<b>SUBTOTAL</b>	16,122,439	24,700,000	183,471,313	224,293,752
Support costs (7 per cent)	-	1,729,000	12,842,992	14,571,992
<b>TOTAL</b>	16,122,439	26,429,000	196,314,305	238,865,744



# MYANMAR REFUGEE EMERGENCY RESPONSE IN BANGLADESH

Supplementary Appeal

March - December 2018



UNHCR  
hqfr00@unhcr.org

P.O. Box 2500  
1211 Geneva 2

[www.unhcr.org](http://www.unhcr.org)  
[reporting.unhcr.org](http://reporting.unhcr.org)

Published in March 2018

Cover photo:

*Bangladesh. Siblings born in refugee camp where thousands have fled © UNHCR/Andrew McConnell*