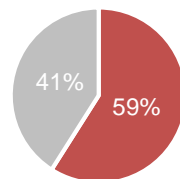


FUNDING STATUS

Total needs
USD 41.3 million

Funds raised
USD 17.1 million



Unmet needs
USD 24.2 million

POPULATION FIGURES

Registered Congolese Refugees
(In Congolese camps) 72,462

Congolese Asylum Seekers
Pending Registration 8,802

Protection

% of children under 12 months old who have been issued birth certificates by the authorities

Target : 80%
Current : 61% ❌
Gap : 19% of births are not documented

of children with specific needs per caseworker

Standard: 50
Current : 153 ❌
Gap equivalent : 10 caseworkers needed to meet standard

Health

referrals to secondary and tertiary care per month

Target : 614
Current : 430 ❌
Gap equivalent : Funding unavailable for 30% needed health referrals

patients seen per clinician per day

Standard: 50
Current : 47 ✅
Standard achieved

WASH

of liters of water per person per day

Standard : 20
Current : 18 ⚠️
Gap : 2

of persons per drop hole per day

Standard : 20
Current : 57 ❌
Gap : 158 blocks of 12 stances

Education

% of children enrolled in school

Standard: 100%
Current : 83% ❌
Gap : 17% children out of school

% of girls (3-18) enrolled in school

Standard: 100%
Current: 79% ❌
Gap : 21% girls out of school

Shelter

shelter of transformed (semi-permanent shelter)

Target : 18,116
Current: 8,842 ❌
Gap : 9,274 families without adequate shelter (51%)

of shelters covered with plastic sheeting roof

Target: 0
Current: 4,646 ❌
Gap equivalent: 26% of families living under plastic sheeting

Energy

% energy needs covered by alternatives to firewood

Target : 60%
Current : 0% ❌
Gap : 60%

Livelihoods

% refugees who are self-reliant

Target : 30%
Current : 6% ❌
Gap : 24%

This matrix is based on the most recent and accurate data available from UNHCR sector leads at the time of publication

With thanks to generous support from



Legend:

- ✅ Standard / Target met
- ❌ Standard / Target not met
- ⚠️ Standard / Target borderline
- 🔍 Data missing

With thanks to partners and contributors



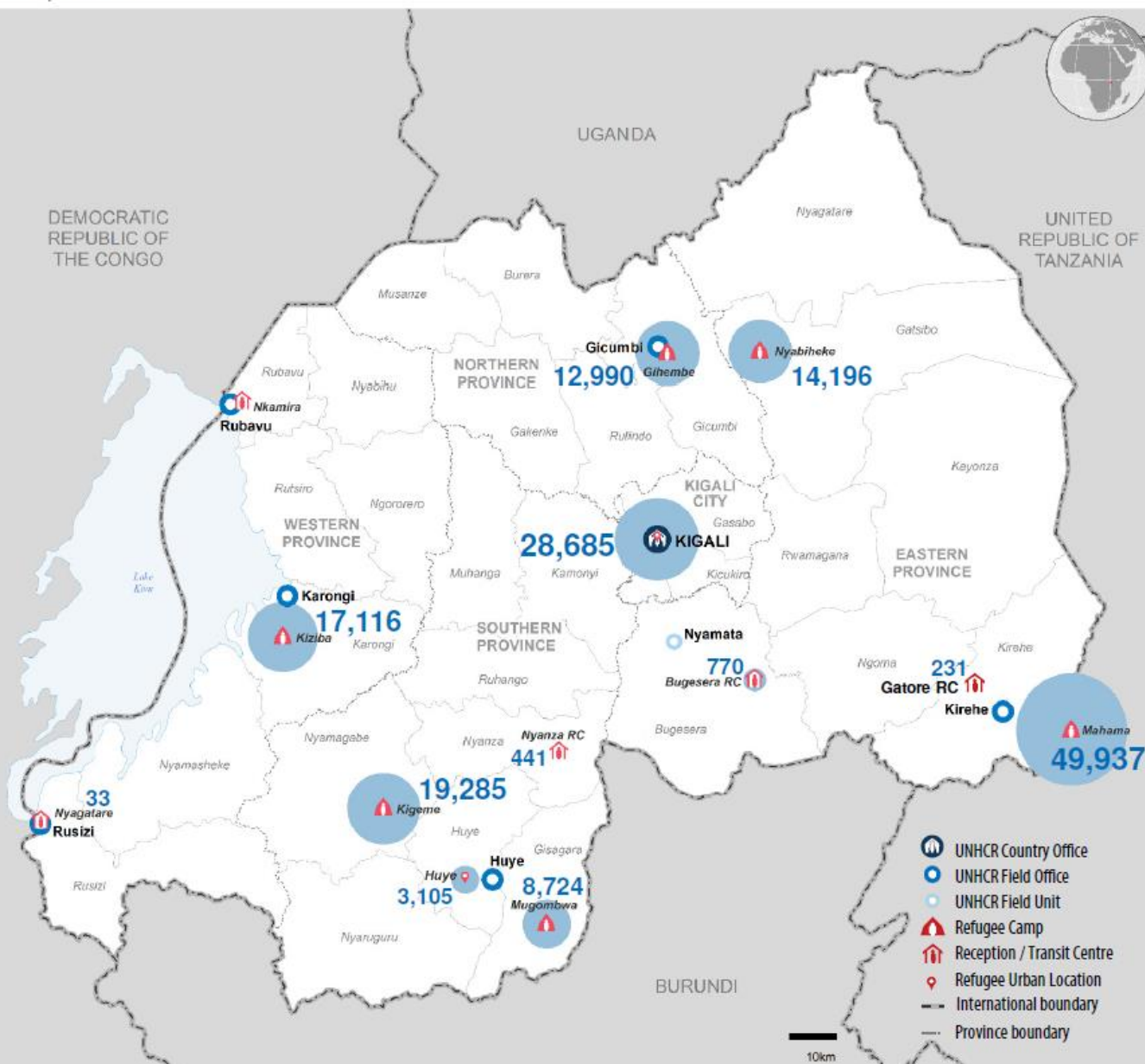
Contacts

Martina Pomeroy, External Relations Officer, pomeroy@unhcr.org, Cell: +250 (0) 78-830-2769 | Erika Fitzpatrick, Associate PI/Reporting Officer, fitzpat@unhcr.org, Cell +250 (0) 78-838-9828
 UNHCR Rwanda: www.unhcr.org/rw | Twitter: @RefugeesRwanda | Daily Statistics: <http://data.unhcr.org/drc/country.php?id=182>

Rwanda

Population of Concern to UNHCR

as of 30th September 2016



Population Figures

Total **164,315**
 Refugees **155,513**
 Asylum Seekers **8,802**

CoO Breakdown

DRC	73,917	47.5%
Burundi	81,184	52.2%
Others	0.3%	412

Age Breakdown



Monthly Registration Trends

